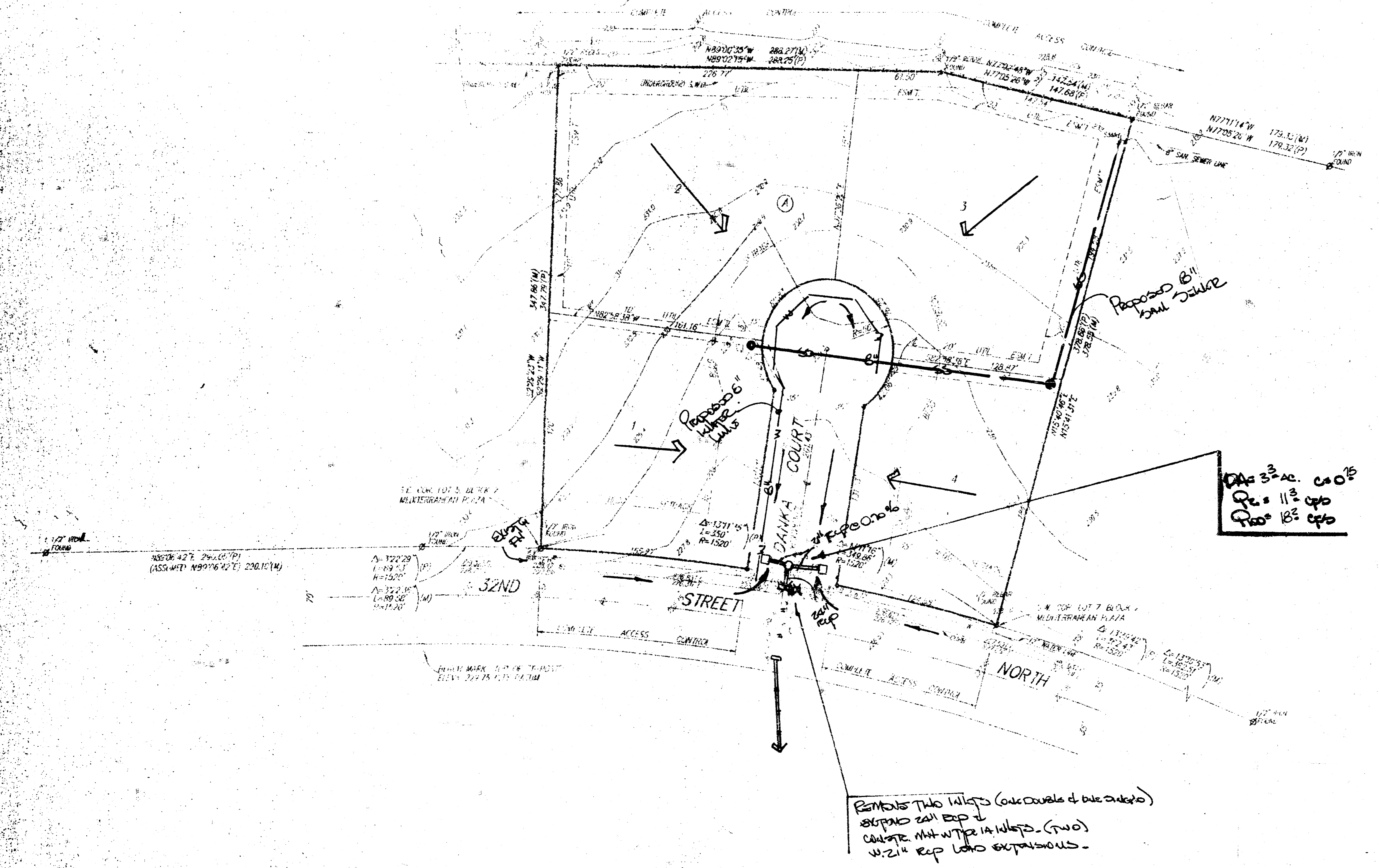


SKETCH PLAT DANKA ADDITION

WICHITA, SEDGWICK COUNTY, KANSAS

NORTHEAST EXPRESSWAY RIGHT-OF-WAY
(FROM S11, PAGE 732)



FOUND CORNERS ARE IN UNDEVELOPED
ORIGIN UNLESS IDENTIFIED ON SKETCH

(P) = PLATTED
(M) = MEASURED
BEARING BASE = ASSUMED

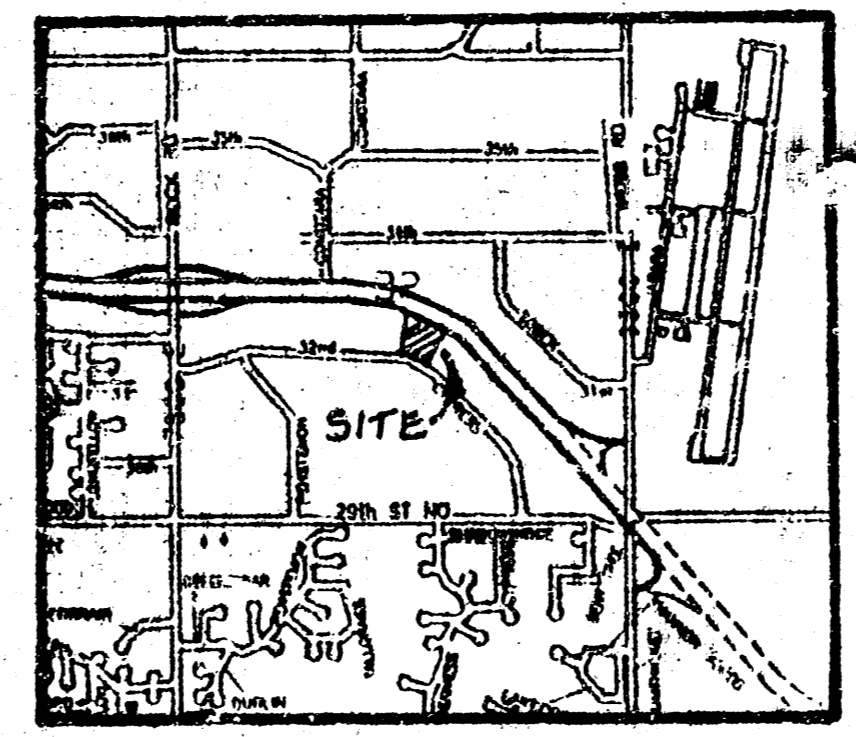
- = 1/2" REBAR W/ "RANGEMAN" CAP (P)
- ◻ = 1/2" IRON (FOUND)
- ▲ = 1/2" REBAR (FOUND)

OWNER:
M. E. DARGER & ASSOCIATES, INC.
5565 NORTH STREET NORTH
P. O. BOX 2244
ST. PETERS, MO. 65751-2244
PH: 613-821-5421

LEGAL DESCRIPTION:
A REPLAT OF LOT 6, BLOCK 2, WILKINSON PLAZA,
AN ADDITION TO WICHITA, SEDGWICK COUNTY, KANSAS

DENMARK:
"1" CUL. TOP OF NORTH CURB ON 32ND STREET NORTH,
BETWEEN LOTS 4 & 5, BLOCK 2, WILKINSON PLAZA,
ELEV. = 229.42 (1977 DATUM)

TOP OF "1" CUL. 80' W. W. 1/4 COR. OF THE W. 1/4 OF
LOT 6, BLOCK 2, WILKINSON PLAZA,
ELEV. = 229.75 (1977 DATUM)



VICINITY MAP

DRAINAGE PLAN UTILITY PLAN