

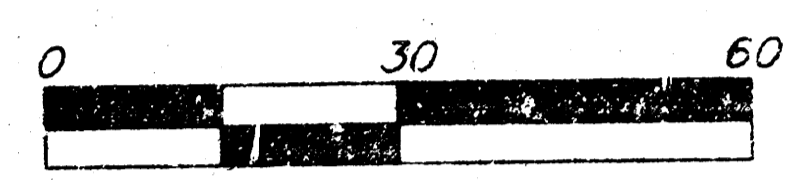
# DRAINAGE PLAN

## DEERGLEN OFFICE PARK ADDITION

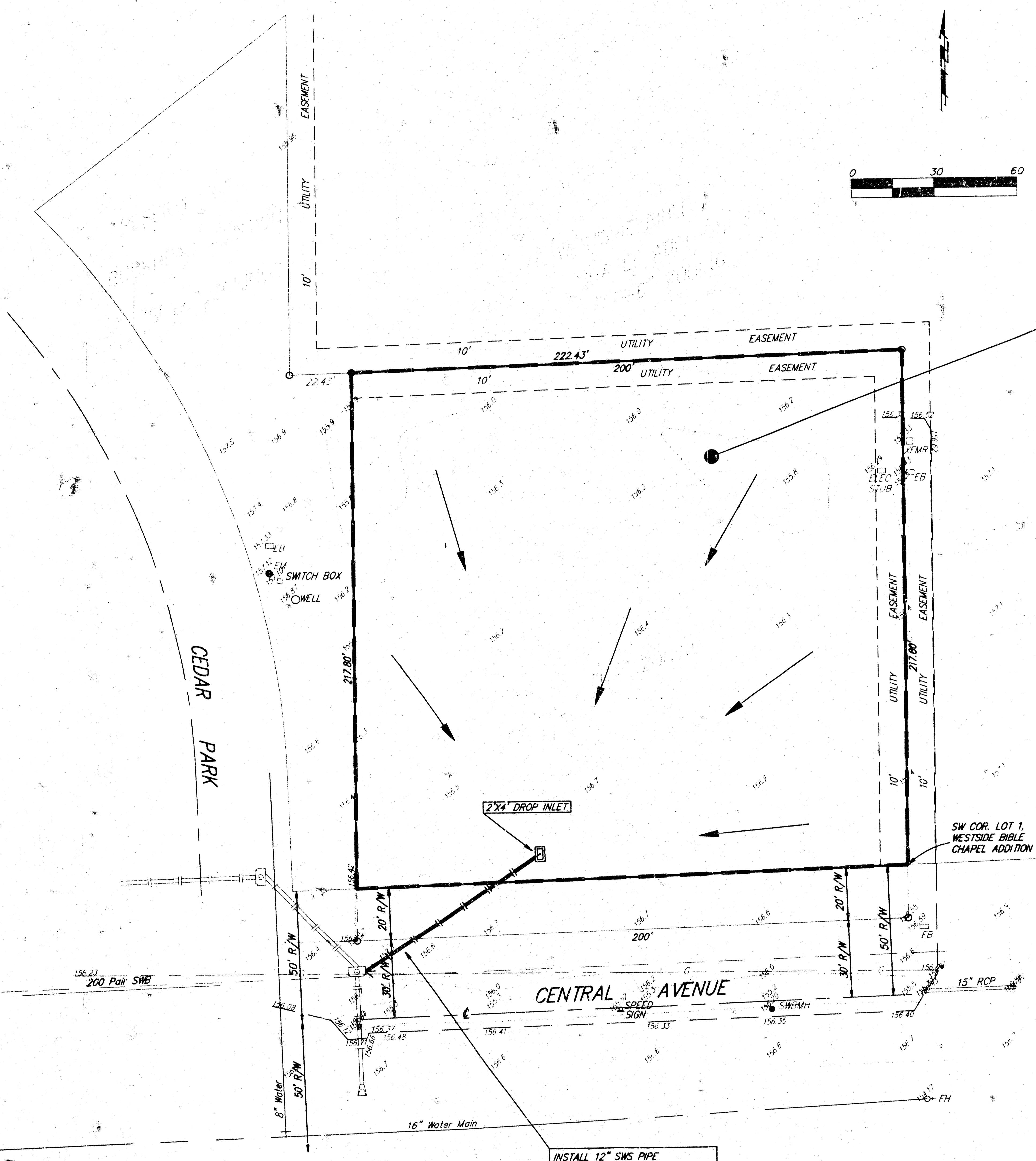
### SEDGWICK COUNTY, KANSAS

**LEGEND**

- = #4 Baughman Rebar (Set)
- = #4 Baughman Rebar (Found)
- DI = Drop Inlet
- EB = Electric Box
- EM = Electric Meter
- FH = Fire Hydrant
- LP = Light Pole
- Sign = Sign
- SWMH = Southwestern Bell Manhole
- SWITCH BOX = Switch Box
- Well = Cased Well
- XFWR = Transformer



DRAINAGE AREA = 0.9 ACRES  
 "C" = 0.90  
 Tc = 15 min.  
 Q2 = 3.1 cfs  
 Q10 = 3.7 cfs  
 Q100 = 6.0 cfs

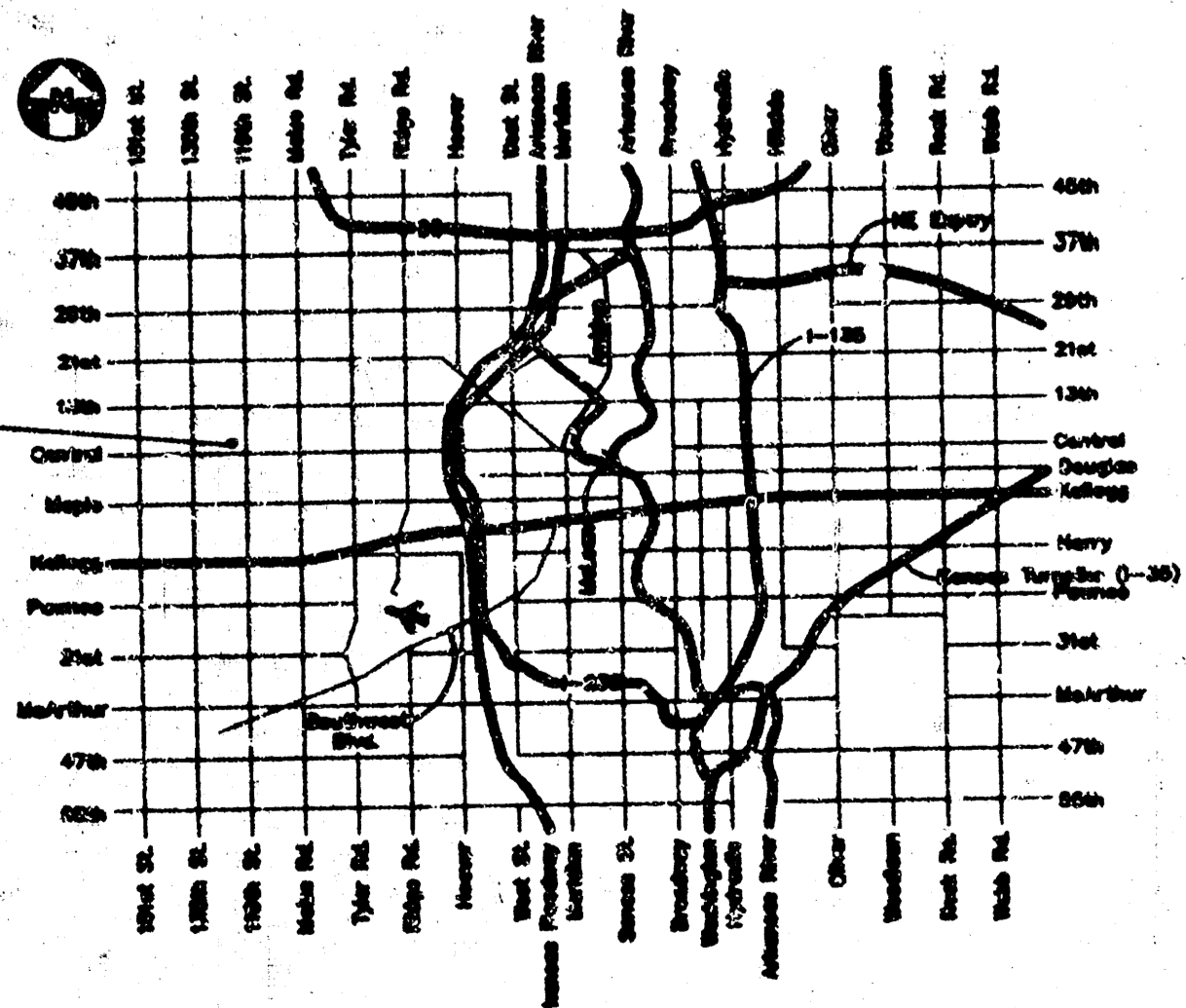


INSTALL 12" SWS PIPE  
 CONNECT TO EXISTING SWS INLET

**OWNER:**  
 KELSEY DEVELOPMENT, INC.  
 716 N. 119TH STREET WEST  
 SUITE 223  
 WICHITA, KS 67212

**LEGAL DESCRIPTION:**  
 A TRACT IN THE SOUTHEAST QUARTER OF SECTION 13, TOWNSHIP 27, RANGE 1, WEST OF THE 6TH P.M., SEDGWICK COUNTY, KANSAS, DESCRIBED AS THE WEST 200 FEET OF THE EAST 600 FEET OF THE SOUTH 217.8 FEET OF SAID SOUTHEAST QUARTER.

**BENCHMARK:**  
 CITY OF WICHITA BENCHMARK, SOUTHWEST CORNER INTERSECTION, 40 FEET EAST AND 46 FEET SOUTH OF CENTER LINE BOTH, 58.82 FEET SE CORNER IRON, 21.7 FEET WEST OF FACE WALK N/S, 13.6 FEET NORTH OF WALK E/W, ELEVATION = 156.93 CITY DATUM



VICINITY MAP