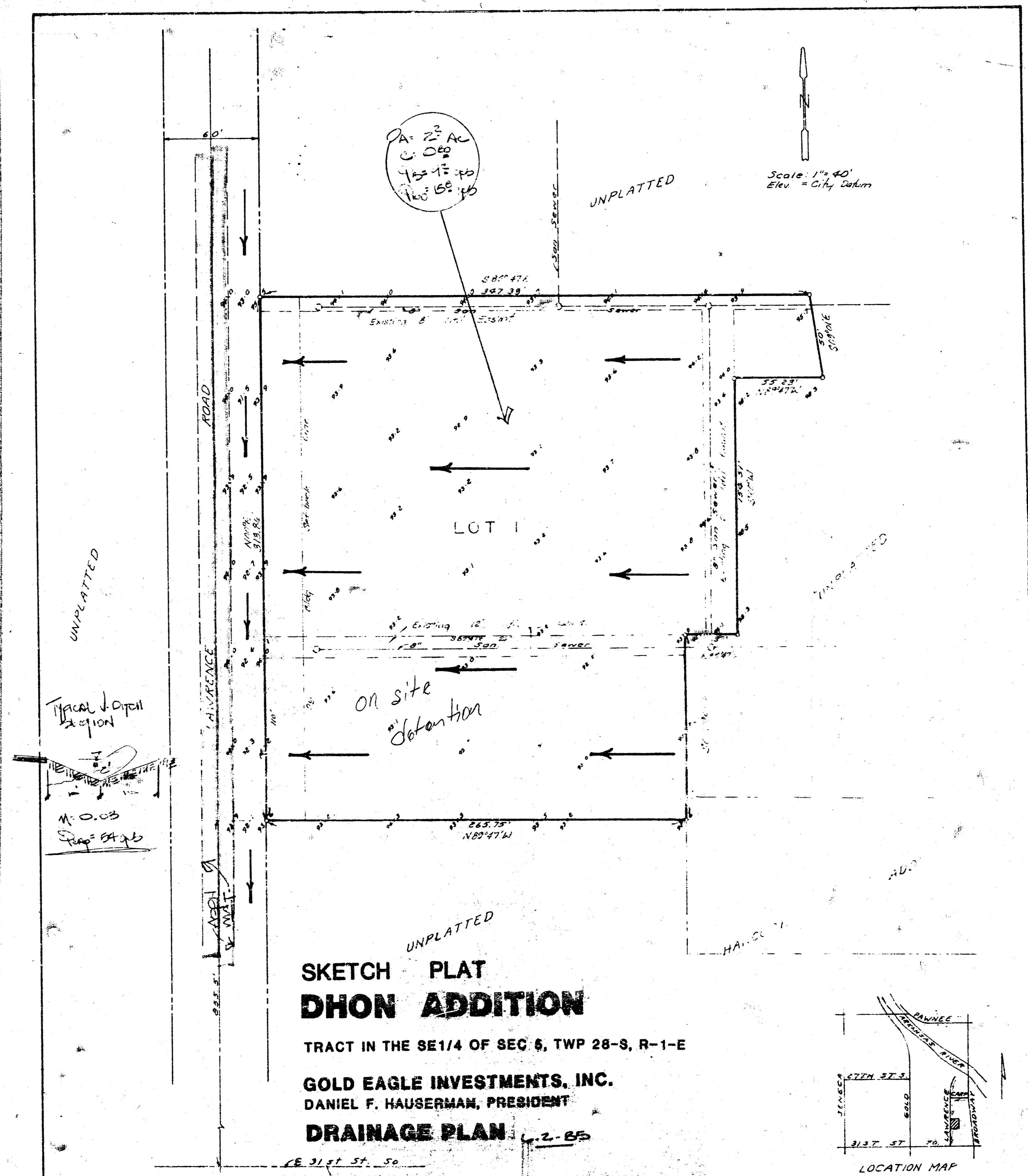


DHON ADDITION
(Drainage)



GENERAL NOTES
 The lot is zoned commercial and could have a runoff factor of 0.80. The lot when developed will drain west to Lawrence Road which drains south to 31st St via ditches. Discharge to the ditch will be thru either flumes or drives or both with adequate capacity. Bridges and culvert pipes installed as necessary. The typical ditch existing section is capable of conveying up to 51 cfs.

BAUGHMAN COMPANY, P.A.
 SURVEYING & ENGINEERING
 31628-7271 • 330 LAURA • WICHITA, KANSAS 67211
 23 May 1985