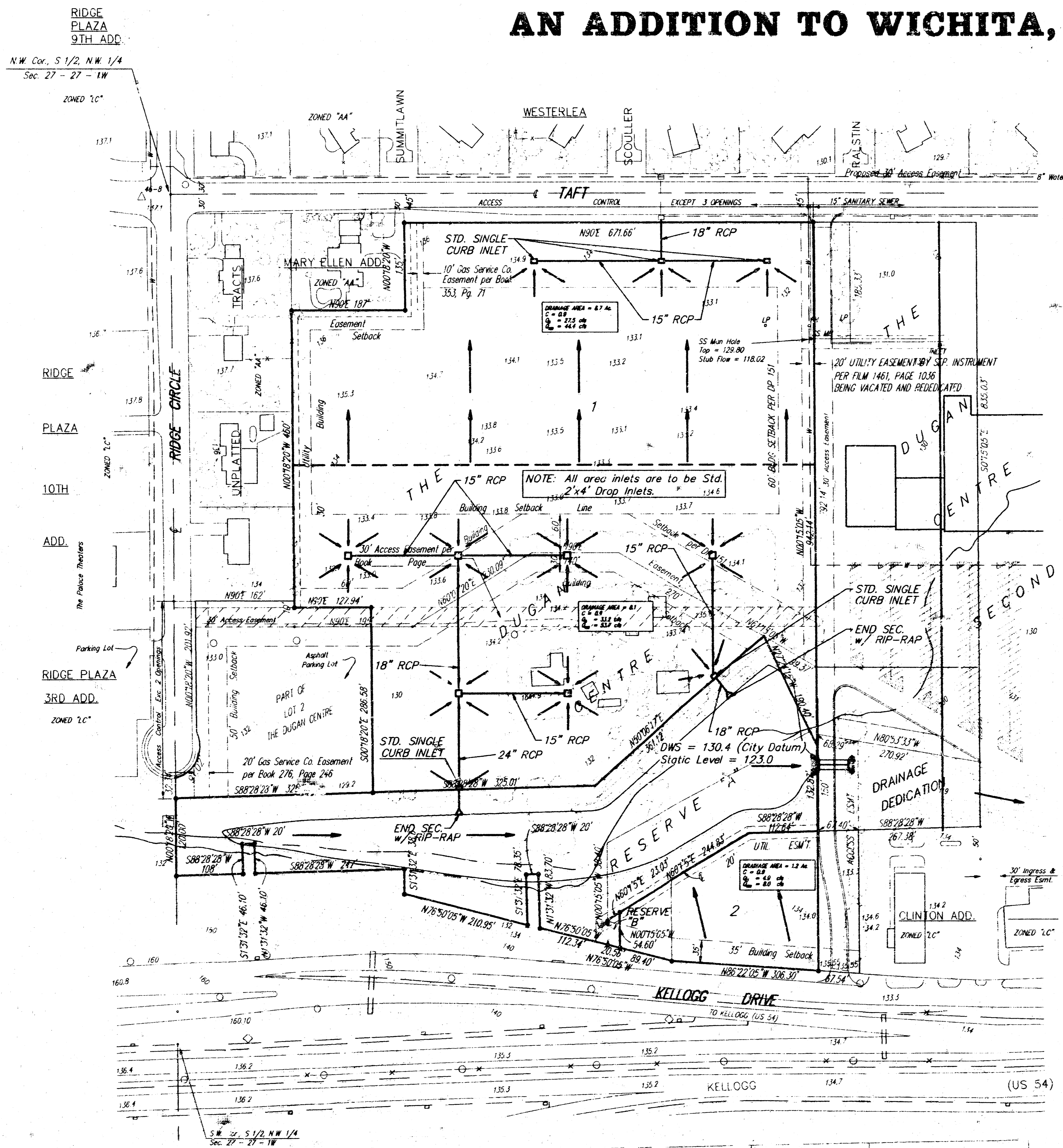


DRAINAGE PLAN

THE DUGAN CENTRE THIRD

AN ADDITION TO WICHITA, KANSAS



LEGEND:

CONTOURS @ 2' INTERVALS
 • = #4 REBAR W/ "BAUGHMAN" CAP (SET)

OWNER:

Kenneth Reichenberger
 501 S. Summitlawn
 Wichita, Kansas 67209

NOTE:

THE DETENTION FACILITY WAS DESIGNED FOR THE DEVELOPED 100 YEAR STORM EVENT FOR LOTS 1 AND 2 WITHIN THIS PLAT. THE DETENTION FACILITY WAS CONSTRUCTED AS A CITY PROJECT "STORM WATER DRAIN #71".

LEGAL DESCRIPTION:

PART OF LOTS 1, 2, & 3,
 THE DUGAN CENTRE
 WICHITA, KANSAS

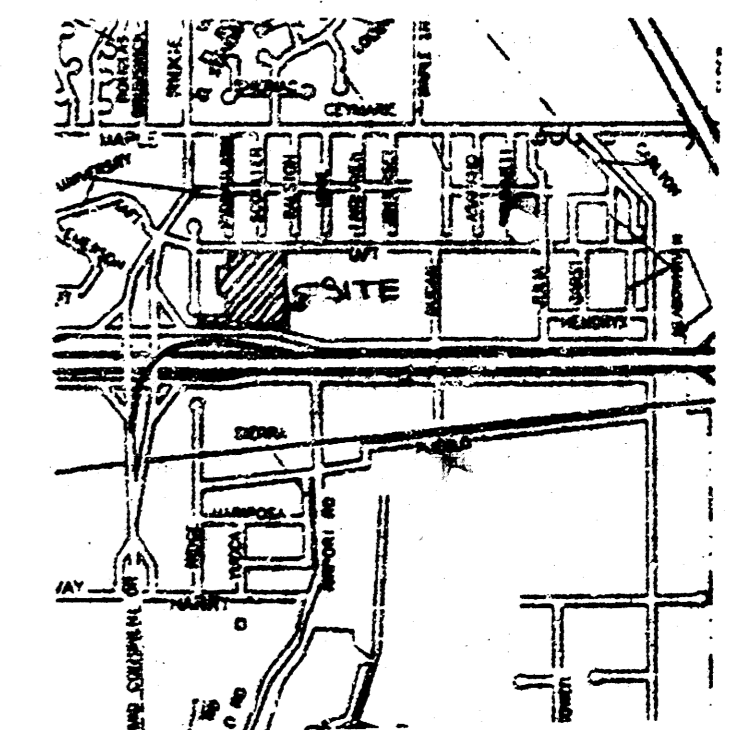


1" = 100'

BENCHMARK:

R.R. SPIKE IN SOUTH SIDE OF
 POWER POLE AT THE N.W. CORNER
 OF TAFT AND DUGAN
 ELEV. = 120.39 CITY DATUM
 ELEV. = 1307.79 M.S.L.

R.R. SPIKE IN THE S.E. SIDE OF
 POWER POLE AT THE N.W. CORNER
 OF TAFT AND SUMMITLAWN
 ELEV. = 137.67 CITY DATUM
 ELEV. = 1325.07 M.S.L.



VICINITY MAP

DIAMOND 2ND ADD
 ZONED "C"

DIAMOND 3RD ADD
 ZONED "C"

DIAMOND ADD.
 ZONED "C"

RESERVE C
 ZONED "C"