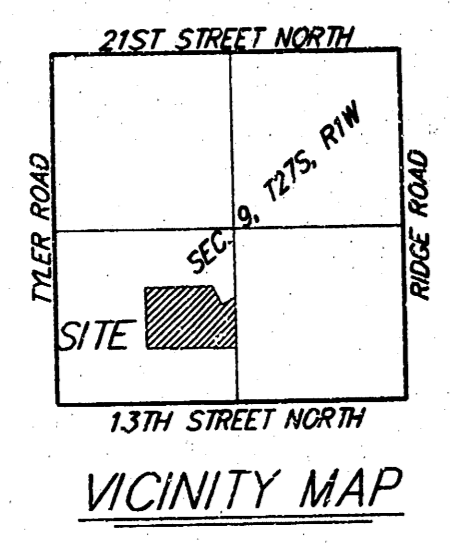
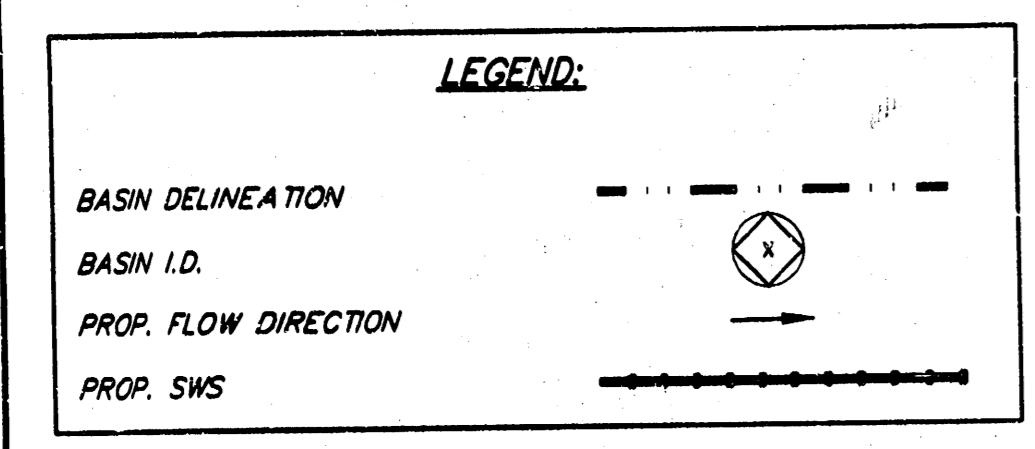
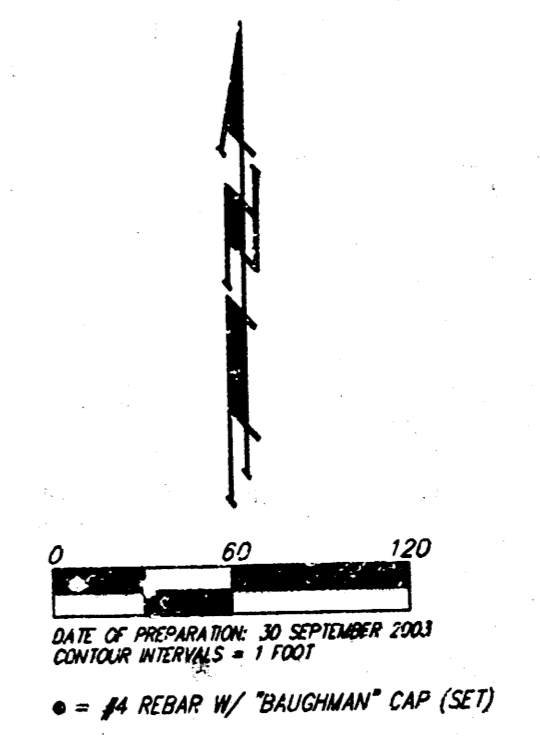
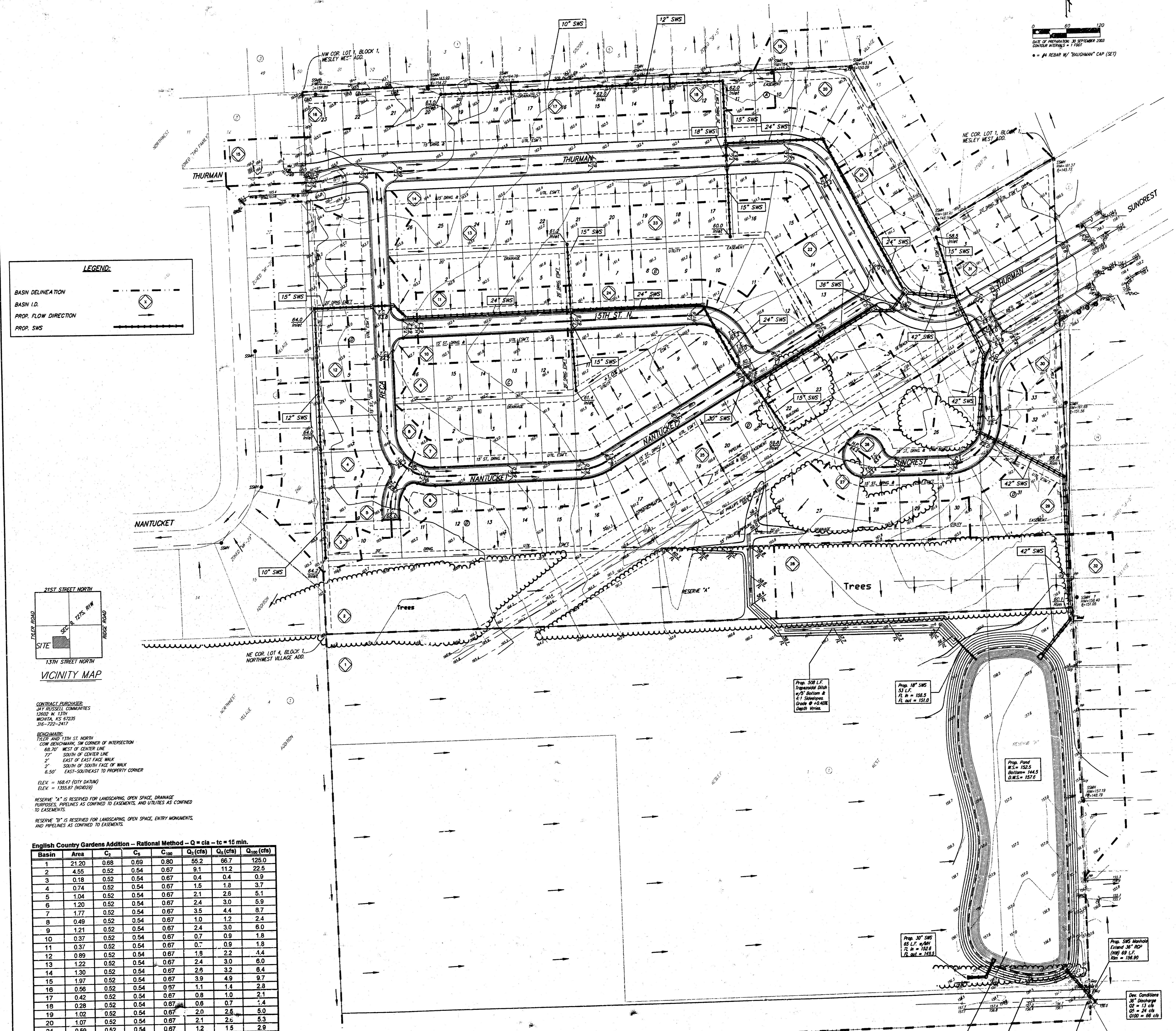


DRAINAGE PLAN ENGLISH COUNTRY GARDENS ADDITION WICHITA, SEDGWICK COUNTY, KANSAS



CONTRACT PURCHASER:
 JAY RUSSELL COMMUNITIES
 1302 W. 13TH
 WICHITA, KS 67235
 316-722-2417

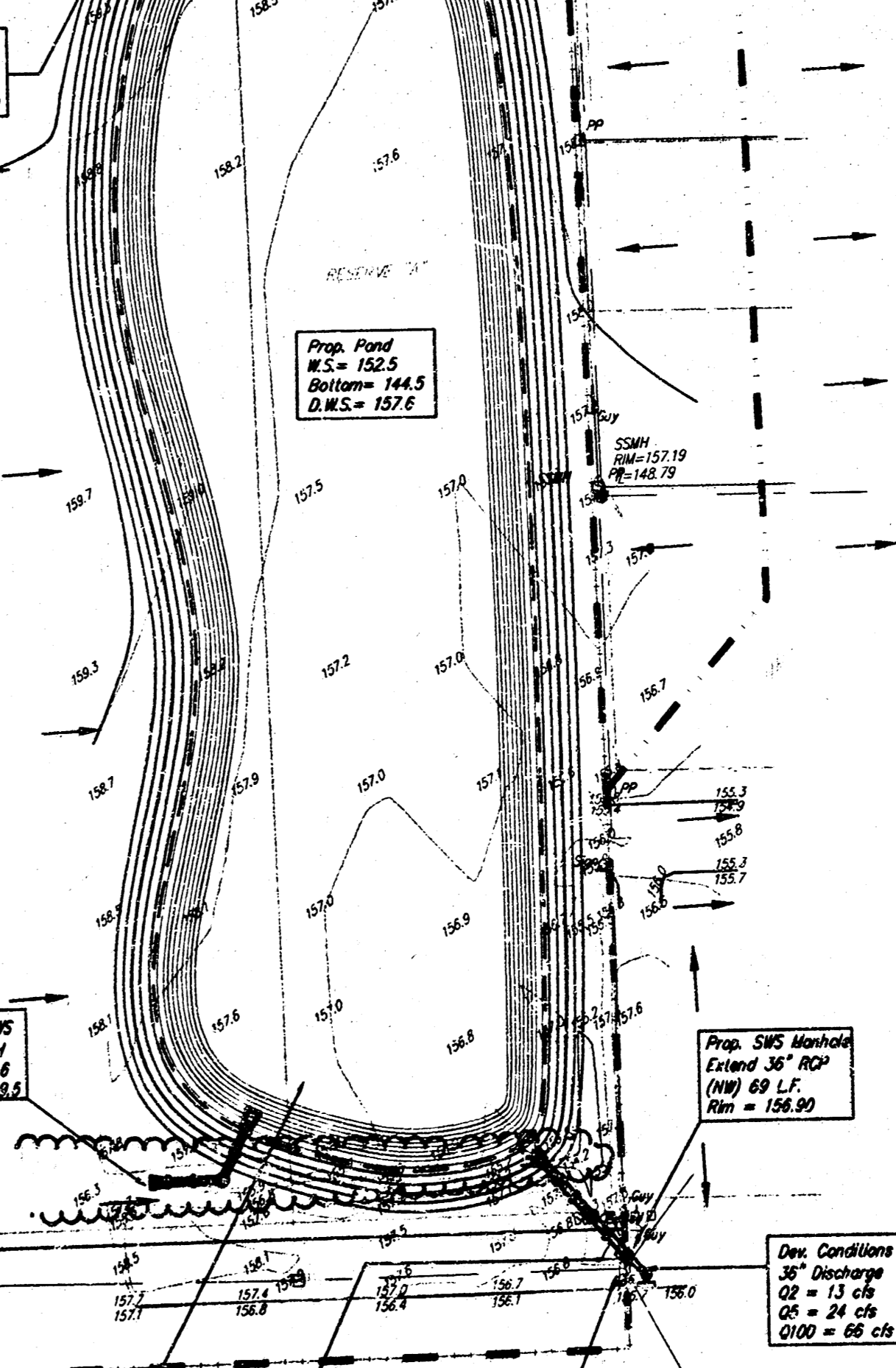
BENCHMARK:
 17th and 13th St. North
 CORNER BENCHMARK SW CORNER OF INTERSECTION
 60'-0" WEST OF CENTER LINE
 77' SOUTH OF CENTER LINE
 2' EAST OF EAST FACE WALK
 2' SOUTH OF SOUTH FACE OF WALK
 6.50' EAST-SOUTHEAST TO PROPERTY CORNER
 ELEV. = 168.47 (CITY DATUM)
 ELEV. = 135.67 (NGVD83)

RESERVE "14" IS RESERVED FOR LANDSCAPING, OPEN SPACE, DRAINAGE PURPOSES, PIPELINES AS CONFIRMED TO EASEMENTS, AND UTILITIES AS CONFIRMED TO EASEMENTS.

RESERVE "10" IS RESERVED FOR LANDSCAPING, OPEN SPACE, ENTRY MONUMENTS, AND PIPELINES AS CONFIRMED TO EASEMENTS.

English Country Gardens Addition - Rational Method - Q = cIa - tc = 15 min.

Basin	Area	C ₁	C ₂	C ₃	Q ₁ (cfs)	Q ₂ (cfs)	Q ₃ (cfs)
1	21.20	0.65	0.69	0.80	55.2	66.7	125.0
2	4.55	0.52	0.54	0.67	9.1	11.2	22.5
3	0.18	0.52	0.54	0.67	0.4	0.4	0.9
4	0.74	0.52	0.54	0.67	1.5	1.8	3.7
5	1.04	0.52	0.54	0.67	2.1	2.6	5.1
6	1.20	0.52	0.54	0.67	2.4	3.0	5.9
7	1.77	0.52	0.54	0.67	3.5	4.4	9.7
8	0.49	0.52	0.54	0.67	1.0	1.2	2.4
9	1.21	0.52	0.54	0.67	2.4	3.0	6.0
10	0.37	0.52	0.54	0.67	0.7	0.9	1.8
11	0.37	0.52	0.54	0.67	0.7	0.9	1.8
12	0.99	0.52	0.54	0.67	1.9	2.2	4.4
13	1.22	0.52	0.54	0.67	2.4	3.0	6.0
14	1.30	0.52	0.54	0.67	2.6	3.2	6.4
15	1.97	0.52	0.54	0.67	3.9	4.9	9.7
16	0.56	0.52	0.54	0.67	1.1	1.4	2.8
17	0.42	0.52	0.54	0.67	0.8	1.0	2.1
18	0.28	0.52	0.54	0.67	0.6	0.7	1.4
19	1.02	0.52	0.54	0.67	2.0	2.5	5.0
20	1.07	0.52	0.54	0.67	2.1	2.6	5.3
21	0.59	0.52	0.54	0.67	1.2	1.5	2.9
22	1.12	0.52	0.54	0.67	2.2	2.8	5.5
23	0.85	0.52	0.54	0.67	1.7	2.1	4.2
24	0.35	0.52	0.54	0.67	0.7	0.9	1.7
25	1.08	0.52	0.54	0.67	2.2	2.7	5.3
26	0.83	0.52	0.54	0.67	1.3	1.6	3.1



13TH STREET N.

Dist. Conditions:
 11.4 = 50.7 ft.
 0.1 = 0.5 ft.
 1.0 = 5.0 ft.
 2.0 = 10.0 ft.
 3.0 = 15.0 ft.
 4.0 = 20.0 ft.
 5.0 = 25.0 ft.
 6.0 = 30.0 ft.
 7.0 = 35.0 ft.
 8.0 = 40.0 ft.
 9.0 = 45.0 ft.
 10.0 = 50.0 ft.

Dist. Conditions:
 11.4 = 50.7 ft.
 0.1 = 0.5 ft.
 1.0 = 5.0 ft.
 2.0 = 10.0 ft.
 3.0 = 15.0 ft.
 4.0 = 20.0 ft.
 5.0 = 25.0 ft.
 6.0 = 30.0 ft.
 7.0 = 35.0 ft.
 8.0 = 40.0 ft.
 9.0 = 45.0 ft.
 10.0 = 50.0 ft.

Dist. Conditions:
 11.4 = 50.7 ft.
 0.1 = 0.5 ft.
 1.0 = 5.0 ft.
 2.0 = 10.0 ft.
 3.0 = 15.0 ft.
 4.0 = 20.0 ft.
 5.0 = 25.0 ft.
 6.0 = 30.0 ft.
 7.0 = 35.0 ft.
 8.0 = 40.0 ft.
 9.0 = 45.0 ft.
 10.0 = 50.0 ft.