

**LEGEND**

- 11 Lot number
- F 64.4 Top of foundation elevation (7"-8" above basement floor)
- G 62.9 Garage floor elevation
- R 99.4 Top of rear wall elevation on view cut (ground 6" below)
- W 99.4 Top of basement floor elevation on walk out
- 99.2 Ground elevation at lot corner
- 98.8 Ground elevation at "x"
- VO Viewout basement  
The ground elevation at the viewout wall is 5 feet below the top of the foundation.
- WO Walkout basement  
The ground elevation at the walkout wall is 8 feet below the top of the foundation.
- NV No viewout

**NOTES**

1. ADD 1500 TO ELEVATIONS SHOWN TO GET USDS DATUM.
2. ONLY THOSE TREES WITHIN PROPOSED STREET RIGHT-OF-WAYS MAY BE REMOVED AT THE APPROVAL OF THE OWNER AND/OR THE ENGINEER.
3. THIS GRADING PLAN IS SUBJECT TO CHANGE TO MATCH FINAL PAVING AND DRAINAGE PLANS.
4. FRONT LOT CORNER ELEVATIONS ARE SHOWN IN STREET. FRONT LOT CORNER ELEVATIONS ARE 0.5 FEET ABOVE TOP OF CURB ELEVATION. (TOP OF CURB ELEVATIONS ARE NOT SHOWN!!!)
5. GARAGE FLOOR ELEVATIONS ARE SET 3" ABOVE HIGHEST FRONT LOT CORNER ELEVATION (TYPICAL).
6. THIS PLAN WAS PREPARED FOR DRAINAGE PURPOSES ONLY. THE EXISTING GROUND LINE MAY HAVE BEEN CHANGED IN SOME AREAS WITHIN THIS ADDITION. GRADE CHANGES IN THESE AREAS MAY NOT HAVE BEEN MADE WITH ENGINEERED FILLS. BUILDERS MAY NEED TO OBTAIN FOUNDATION ADVICE FROM A GEOTECHNICAL ENGINEER PRIOR TO CONSTRUCTION.

**BENCHMARK**

1. Brass Plate on North Hub Guard of R.C.B.C.  
50' East of NW Corner NE 1/4, S22, T26S, R1E  
Elevation 1371.83 M.S.L. Datum

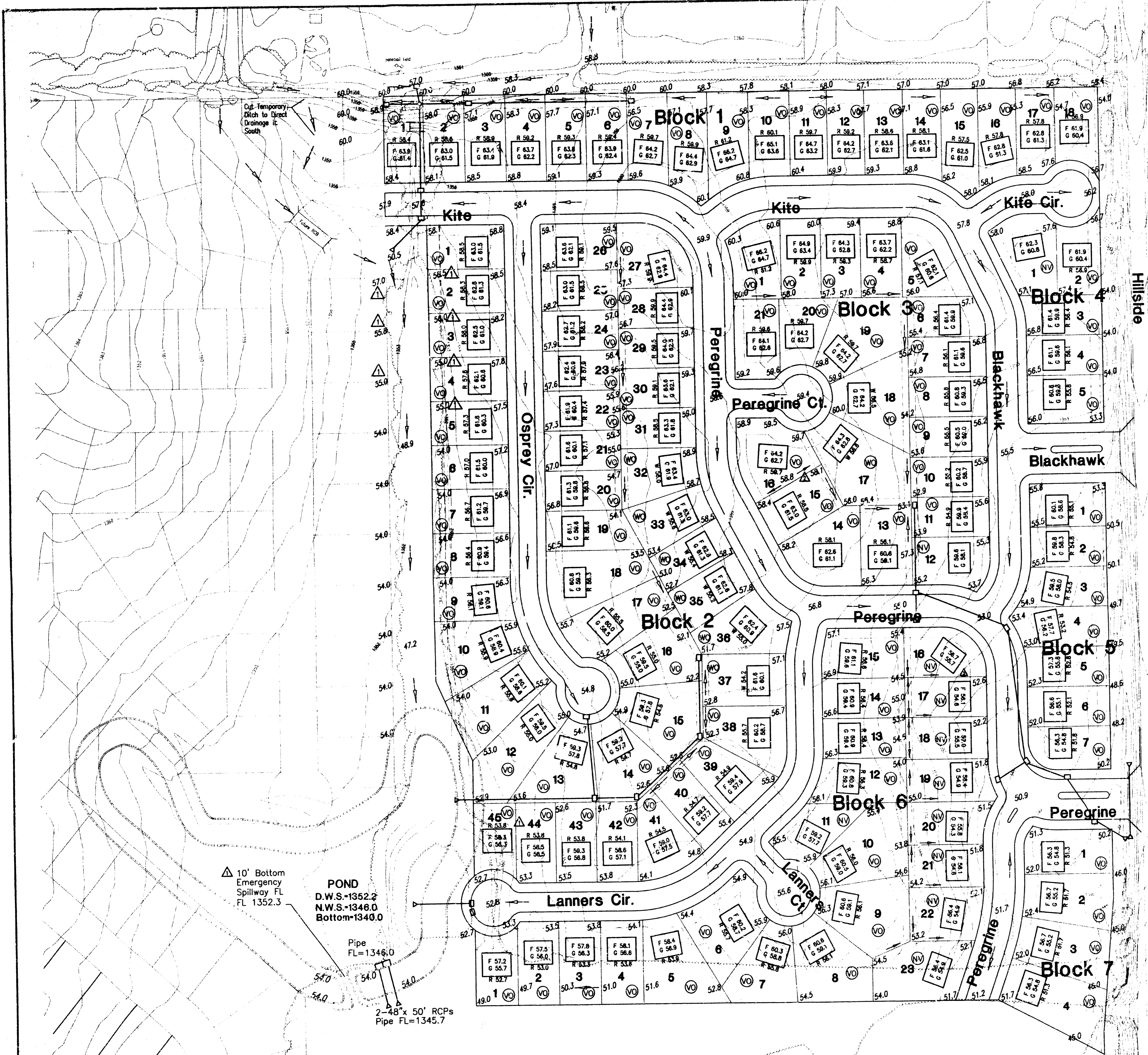
**APPROVED  
DRAINAGE PLAN**

**FALCON FALLS**  
POE & ASSOCIATES OF KANSAS, INC.  
CONSULTING ENGINEERS  
5940 E. Central, Suite 200 ■ Wichita, KS 67208-4242  
Phone 316/685-4114 ■ FAX 316/685-4444

*James M. Ubert*  
Professional Engineer  
14698  
3-18-03  
KANSAS  
PROFESSIONAL ENGINEER

- △ Revised 10/01/03
- △ Revised 12/18/03
- △ Revised 3/18/04

Lotgrading Plan  
**FALCON FALLS ADDITION**  
TO WICHITA, SEDGWICK COUNTY, KANSAS



△ 10' Bottom  
Emergency  
Spillway FL  
FL 1352.3

POND  
D.W.S.-1352.2  
N.W.S.-1348.0  
Bottom-1340.0

Pipe  
FL=1348.0  
2-48" x 50' RCPs  
Pipe FL=1345.7