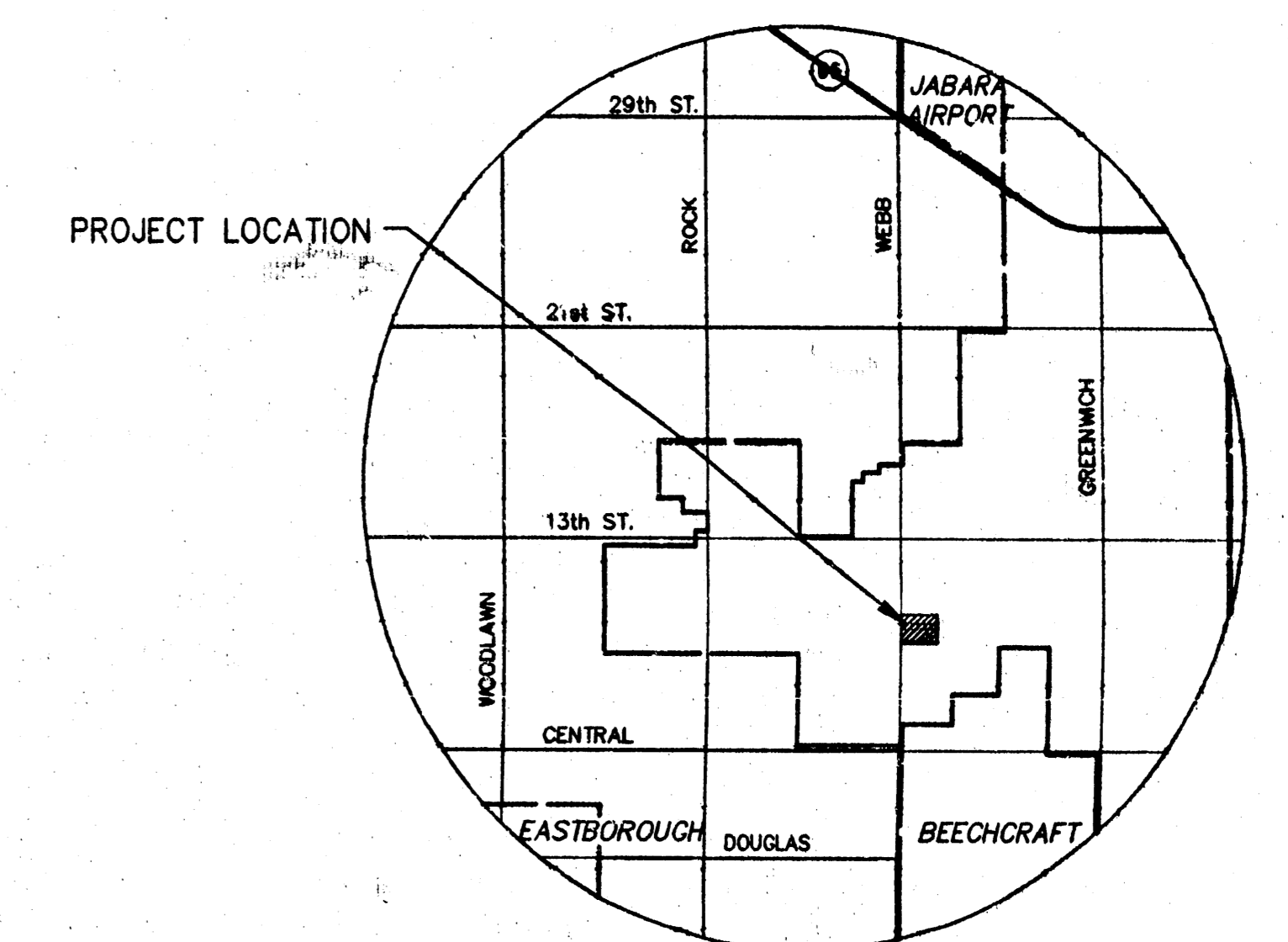
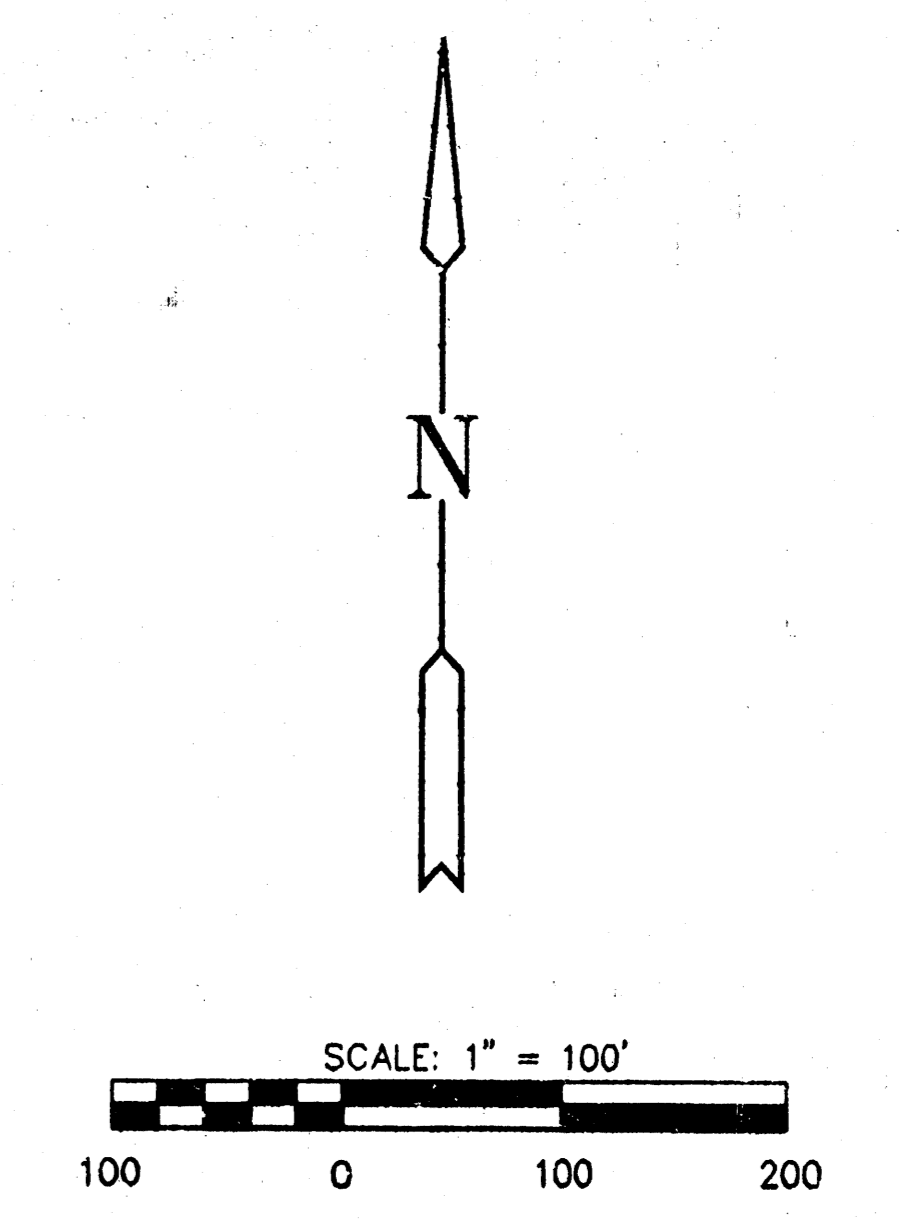
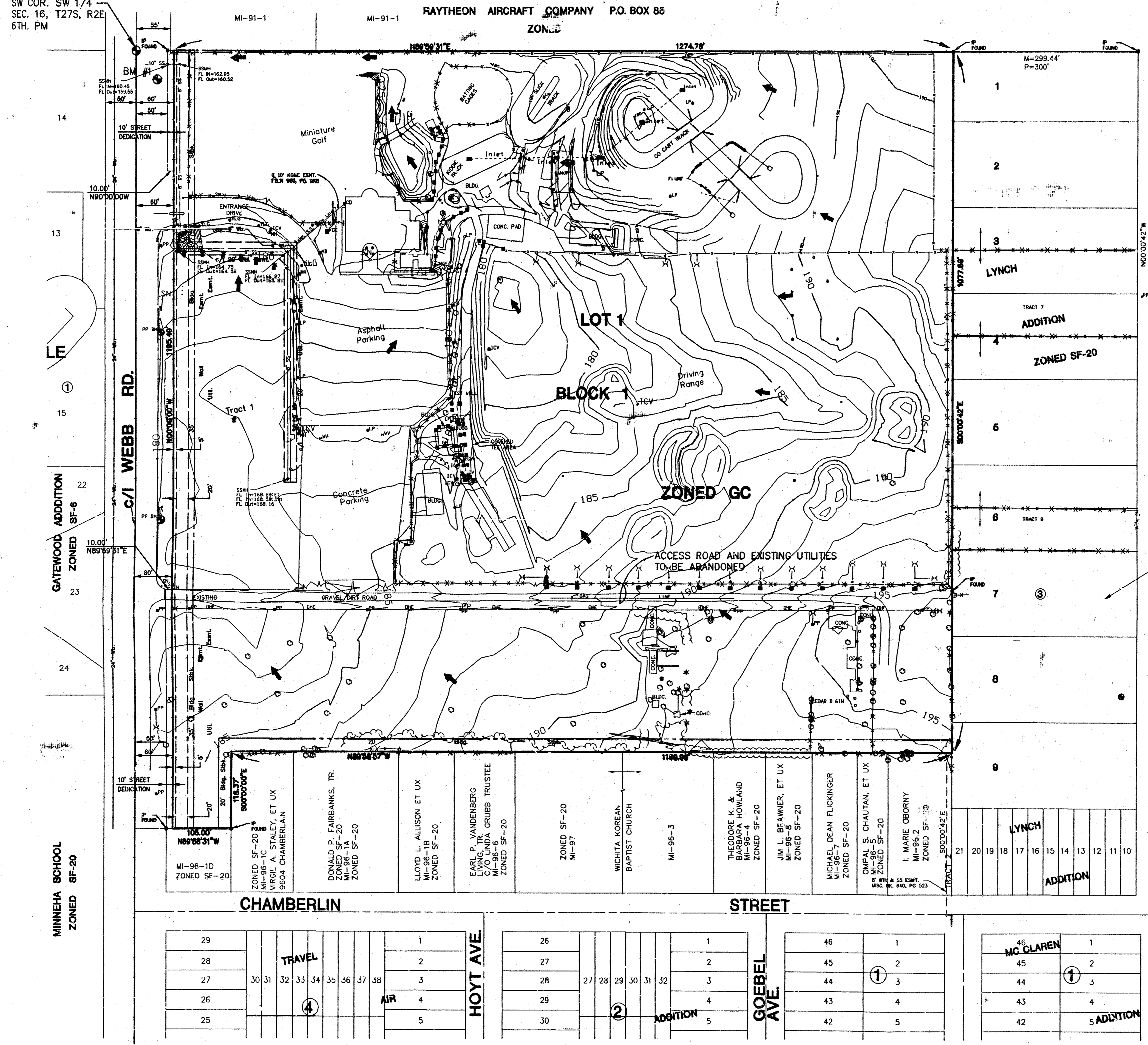


SW COR. SW 1/4  
SEC. 16, T27S, R2E  
6TH. PM



**LOCATION MAP**

**LEGEND**

- MB MANHOLE
- 12IN DECIDUOUS TREE
- 8IN EVERGREEN TREE
- KG&E ELECTRIC BOX
- MH MANHOLE
- IP IRON PIPE
- SPK SPRINKLER
- ICV IRRIGATION CONTROL VALVE
- WV WATER VALVE
- FH FIRE HYDRANT
- SN SIGN
- BM BENCH MARK
- SSMH SANITARY SEWER MANHOLE
- GM GAS METER
- PP POWER POLE W/DEADMAN
- TP TELEPHONE POLE
- TR TELEPHONE RISER
- STUMP TREE STUMP
- YLG YARD LIGHT
- CD CLEANOUT
- FENCE
- HEDGE ROW

**BENCH MARK**

BM# 1 WEBB ROAD AND 9TH. STREET NORTH CITY OF WICHITA  
BENCH MARK DISK, 34' EAST AND 44' SOUTH OF  
QUARTER SECTION CORNER.  
ELEV. = 172.96

**GENERAL NOTES:**

1. NO UTILITY EXTENSIONS ARE REQUIRED.
2. DRAINAGE IMPROVEMENTS ARE ON-SITE, NO PUBLIC DRAINAGE IMPROVEMENTS REQUIRED.



**MID-KANSAS ENGINEERING  
CONSULTANTS, INC.**  
411 N WEBB ROAD  
WICHITA, KS. 67206  
316-684-9600

# DRAINAGE & UTILITY PLAN

## FAMILY GOLF CENTER ADDITION

AN ADDITION TO WICHITA SEDGWICK COUNTY, KANSAS

OWNER - BLUE EAGLE OF KANSAS, INC.  
538 BROADHOLLON ROAD  
MELVILLE, NY 11747

MARCH, 1998

G:\CIVIL\98\100\PROP\VREP\PLAT\98100PRE.DWG

G:\CIVIL\98\100\PROP\VREP\PLAT\98100PRE.DWG