

Revised 11/10/93 SADIKER ←

# FOUR CORNER LOT GRADING PLAN FOR FOREST LAKES WEST

AN ADDITION TO WICHITA, SEDGWICK COUNTY, KANSAS  
DEVELOPER: BOOTHE AND SCHELLENBERG

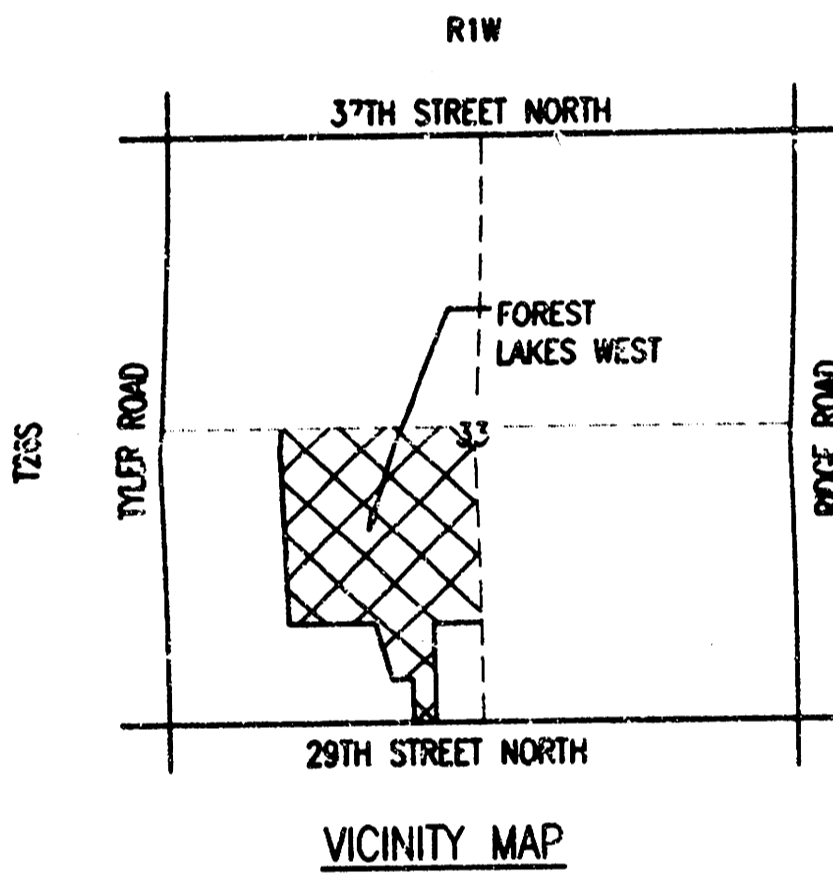
**APPROVED  
DRAINAGE PLAN**



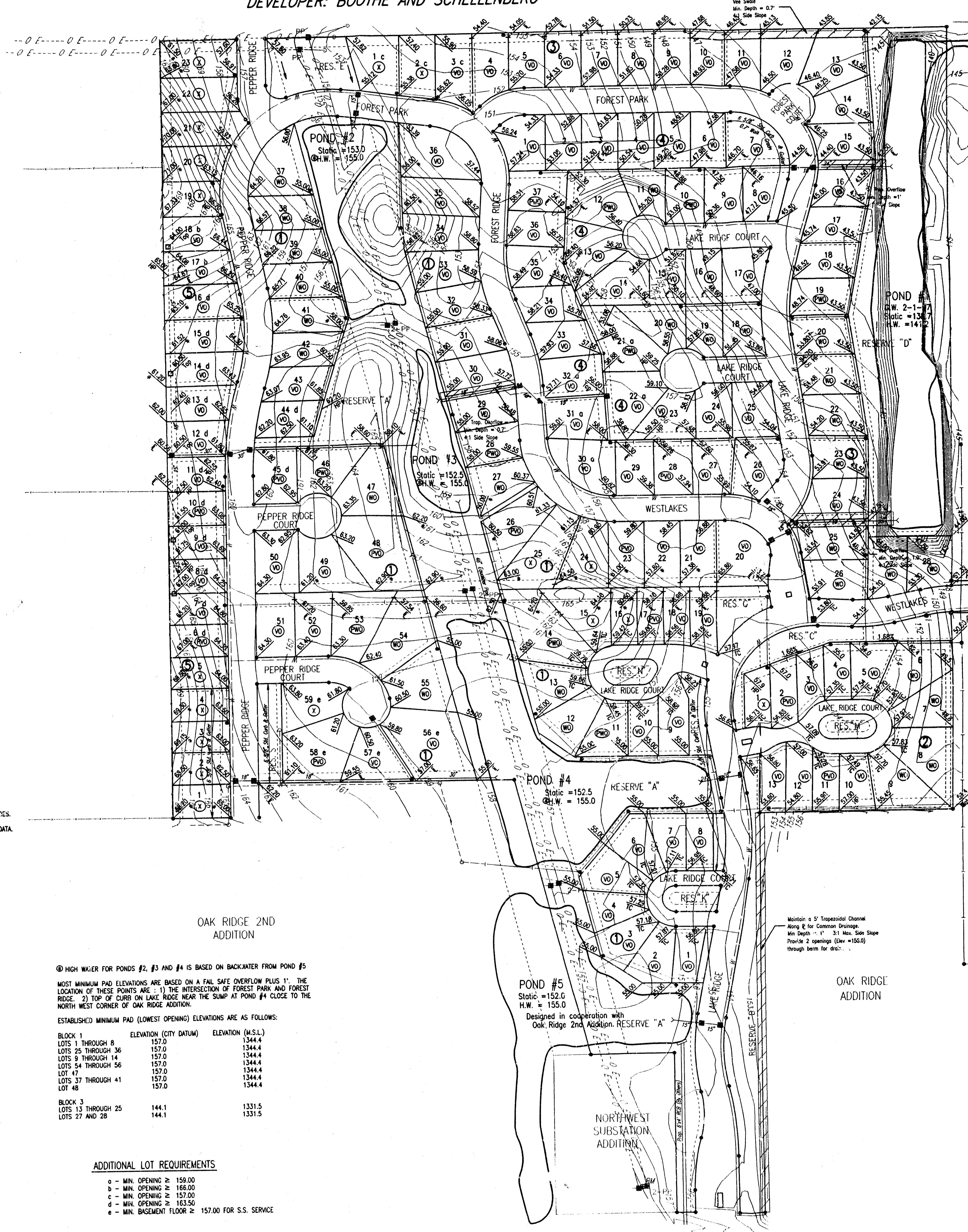
• IRON SET  
SCALE: 1"=100'  
2-14-97

TOPOGRAPHY DATE: JANUARY, 1997

B.M. - RAILROAD SPIKE IN POWER POLE, NORTHWEST  
SUBSTATION ADDITION. ELEV.=159.96 CITY DATUM  
ELEV.=1347.36 M.S.L.



CITY DATUM USED FOR ALL ELEVATIONS.  
MEAN SEA LEVEL = CITY DATUM + 1187.4  
THIS PLAN ASSUMES 3 5/8" ROLL CURB & GUTTER.  
WALK GRADE AT 0.5' ABOVE TOP OF CURB UNLESS NOTED.  
SEE STREET DESIGN PLANS FOR MORE DETAILED & UPDATED STREET GRADES.  
SEE SANITARY SEWER PLANS FOR MORE DETAILED & UPDATED FLOWLINE DATA.



**LEGEND**

- STORM SEWER AND INLET
- STORM SEWER AND MANHOLE
- - - PRIVATE STORM SEWER AND INLET (BY OWNER)
- PROPOSED SANITARY SEWER
- - - PROPOSED WATERLINES
- ⊙ VIEWOUT BASEMENT
- ⊙ WALKOUT BASEMENT
- ⊙ POSSIBLE W/OUT BASEMENT
- ⊙ POSSIBLE WALKOUT BASEMENT
- ⊙ FULL FOUNDATION
- 4 CORNER LOT ELEVATION (ADD 100 FOR CITY DATUM)
- H.P. HIGH POINT
- \* MATCH EXISTING
- E FLOW LINE (DATE)
- TC TOP OF CURB

④ HIGH WATER FOR PONDS #2, #3 AND #4 IS BASED ON BACKWATER FROM POND #5  
MOST MINIMUM PAD ELEVATIONS ARE BASED ON A FAIL SAFE OVERFLOW PLUS 1'. THE LOCATION OF THESE POINTS ARE: 1) THE INTERSECTION OF FOREST PARK AND FOREST RIDGE, 2) TOP OF CURB ON LAKE RIDGE NEAR THE SUMP AT POND #4 CLOSE TO THE NORTH WEST CORNER OF OAK RIDGE ADDITION.

ESTABLISHED MINIMUM PAD (LOWEST OPENING) ELEVATIONS ARE AS FOLLOWS:

BLOCK	LOTS	ELEVATION (CITY DATUM)	ELEVATION (M.S.L.)
BLOCK 1	LOTS 1 THROUGH 8	157.0	1344.4
	LOTS 25 THROUGH 36	157.0	1344.4
	LOTS 9 THROUGH 14	157.0	1344.4
	LOTS 54 THROUGH 56	157.0	1344.4
	LOT 47	157.0	1344.4
	LOTS 37 THROUGH 41	157.0	1344.4
	LOT 48	157.0	1344.4
BLOCK 3	LOTS 13 THROUGH 25	144.1	1331.5
	LOTS 27 AND 28	144.1	1331.5

**ADDITIONAL LOT REQUIREMENTS**

- o - MIN. OPENING ≥ 159.00
- b - MIN. OPENING ≥ 166.00
- c - MIN. OPENING ≥ 157.00
- d - MIN. OPENING ≥ 163.50
- e - MIN. BASEMENT FLOOR ≥ 157.00 FOR S.S. SERVICE

Maintain a 5' Trapezoidal Channel Along R for Common Drainage. Min Depth = 1' 3:1 Max. Side Slope Provide 2 openings (Elev = 155.0) through berm for drainage.

OAK RIDGE ADDITION

© 29TH STREET NORTH = SECTION LINE