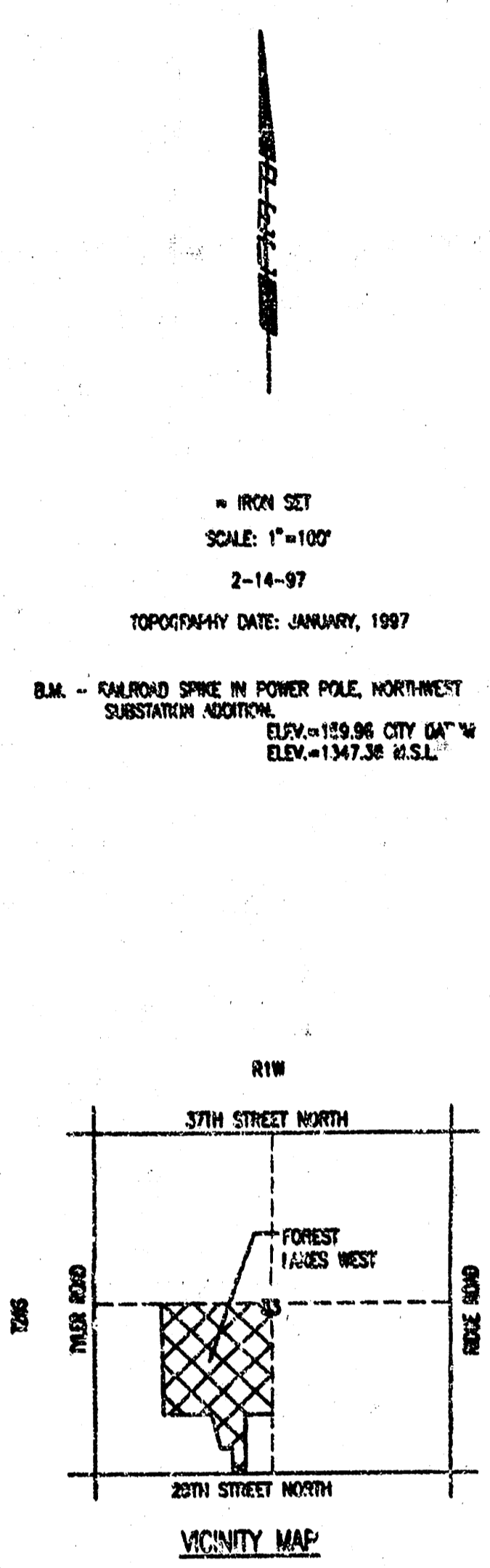
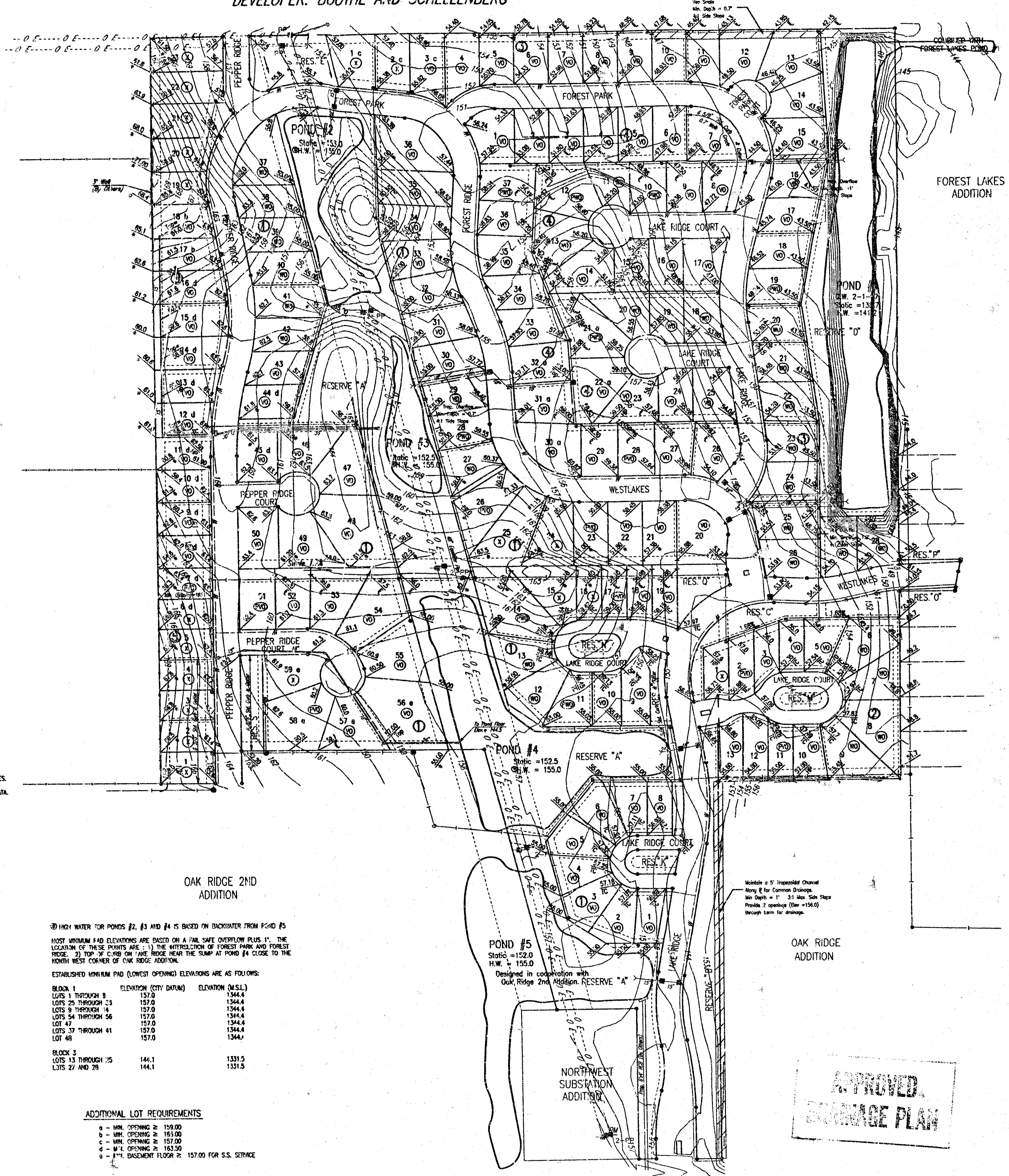


FOUR CORNER LOT GRADING PLAN FOR
FOREST LAKES WEST
 AN ADDITION TO WICHITA, SEDGWICK COUNTY, KANSAS
 DEVELOPER: BOOTHE AND SCHELLENBERG



IRON SET
 SCALE: 1"=100'
 2-14-97
 TOPOGRAPHY DATE: JANUARY, 1997
 B.M. - CALIBRATION SPIKE IN POWER POLE, NORTHWEST
 SUBSTATION ADDITION
 ELEV.=159.96 CITY DATUM
 ELEV.=147.38 U.S.L.

CITY DATUM USED FOR ALL ELEVATIONS.
 MEAN SEA LEVEL = CITY DATUM + 1187.4
 THIS PLAN ASSUMES 3/8" ROLL CURB & CUTTER
 WALK GRADE AT 0.5' ABOVE TOP OF CURB UNLESS NOTED.
 SEE STREET DESIGN PLANS FOR MORE DETAILED & UPDATED STREET GRADES.
 SEE SANITARY SEWER PLANS FOR MORE DETAILED & UPDATED FLOWLINE DATA.

- LEGEND**
- STORM SEWER AND INLET
 - STORM SEWER AND MANHOLE
 - PRIVATE STORM SEWER AND INLET (BY OWNER)
 - PROPOSED SANITARY SEWER
 - PROPOSED WATER LINES
 - ⊙ WALKOUT BASEMENT
 - ⊙ WALKOUT BASEMENT
 - ⊙ POSSIBLE WALKOUT BASEMENT
 - ⊙ POSSIBLE WALKOUT BASEMENT
 - ⊙ FULL FOUNDATION
 - ⊙ 4 CORNER LOT ELEVATION (ADD 1/4" FOR CITY DATUM)
 - H.P. HIGH POINT
 - MATCH EXISTING
 - FLOW LINE (DITCH)
 - TC TOP OF CURB

OAK RIDGE 2ND ADDITION

① HIGH WATER FOR PONDS #2, #3 AND #4 IS BASED ON BACKWATER FROM POND #5
 MOST MINIMUM FLOOD ELEVATIONS ARE BASED ON A FIVE SAFE OVERFLOW PLUS 1'. THE
 LOCATION OF THESE POINTS ARE: 1) THE INTERSECTION OF FOREST PARK AND FOREST
 RIDGE; 2) TOP OF CURB ON LAKE RIDGE NEAR THE SLUMP AT POND #4 CLOSE TO THE
 NORTH WEST CORNER OF OAK RIDGE ADDITION.
 ESTABLISHED MINIMUM PAD (LOWEST OPENING) ELEVATIONS ARE AS FOLLOWS:

| BLOCK | LOT | ELEVATION (CITY DATUM) | ELEVATION (U.S.L.) |
|---------|--------------------|------------------------|--------------------|
| BLOCK 1 | LOTS 1 THROUGH 8 | 157.0 | 1344.4 |
| | LOTS 9 THROUGH 13 | 157.0 | 1344.4 |
| | LOTS 14 THROUGH 16 | 157.0 | 1344.4 |
| | LOTS 17 THROUGH 26 | 157.0 | 1344.4 |
| | LOT 27 | 157.0 | 1344.4 |
| BLOCK 2 | LOTS 27 THROUGH 35 | 144.1 | 1331.5 |
| | LOTS 36 AND 38 | 144.1 | 1331.5 |

ADDITIONAL LOT REQUIREMENTS

- a - MIN. OPENING = 159.00
- b - MIN. OPENING = 161.00
- c - MIN. OPENING = 157.00
- d - MIN. OPENING = 163.50
- e - FULL BASEMENT FLOOR = 157.00 FOR S.S. SERVICE

**APPROVED
 DRAINAGE PLAN**

FOREST LAKES WEST
 Revised: 9/27/01

PAGES FROM THIS BOOK AVAILABLE SEPARATELY

DRAWN: SLD (DTP) AND SCALE: 1"=100.00
 0:14:00 09-27-2001 08:27:43 am