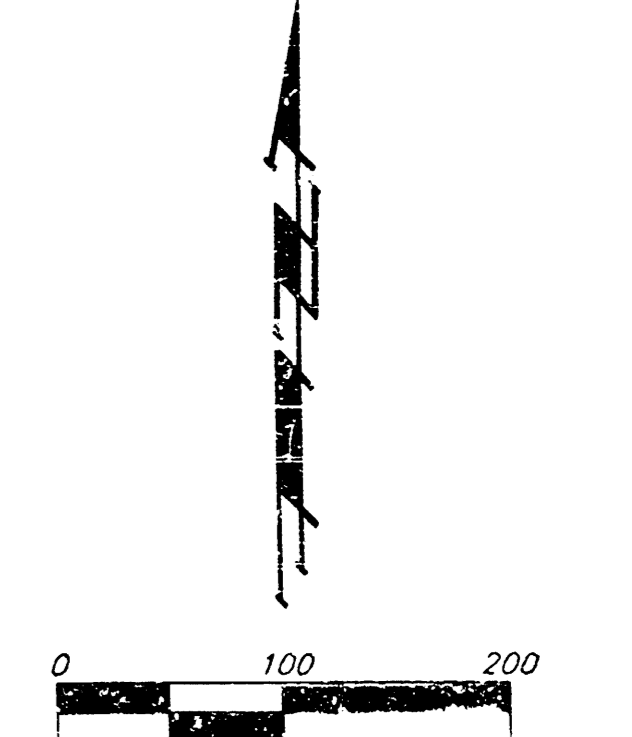
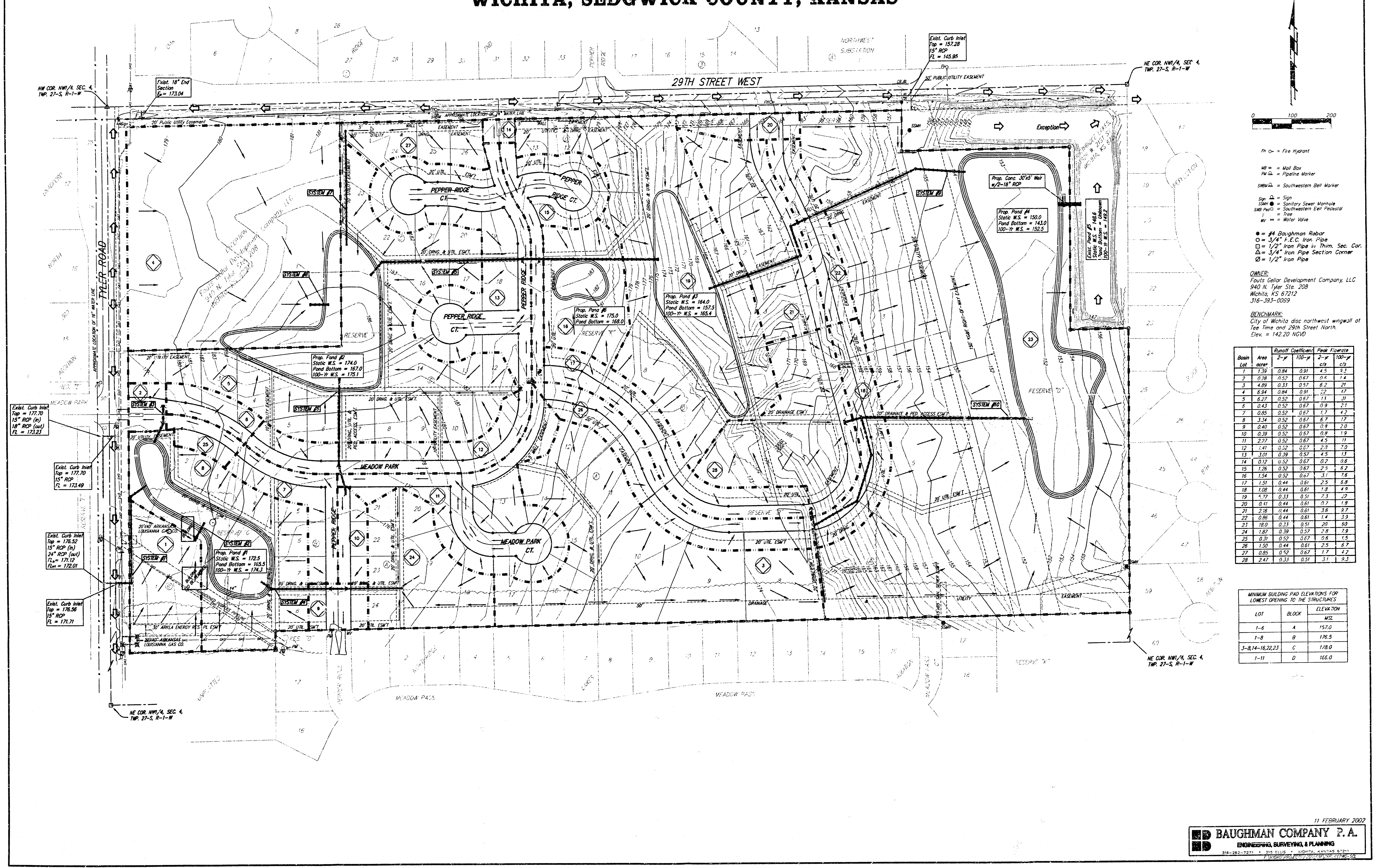


DRAINAGE PLAN FOSSIL RIM ESTATES WICHITA, SEDGWICK COUNTY, KANSAS



- PH = Fire Hydrant
- MB = Mail Box
- PW = Pipeline Marker
- SBWM = Southwestern Bell Marker
- Sign = Sign
- SSM = Sanitary Sewer Manhole
- SWP = Southwestern Bell Pedestal
- T = Tree
- WV = Water Valve
- Ø = 1/2" Baughman Rebar
- = 3/4" F.C.C. Iron Pipe
- = 1/2" Iron Pipe in Thim. Sec. Cor.
- △ = 3/4" Iron Pipe Section Corner
- ⊙ = 1/2" Iron Pipe

OWNER:
Fossil Rim Development Company, LLC
940 N. Tyler Ste. 208
Wichita, KS 67212
316-393-0099

BENCHMARK:
City of Wichita disc northwest wingwall at
Tee Time and 29th Street North.
Elev. = 142.20 NGVD

| Rain Lot | Area acre | Runoff Coefficient | | Peak Flowrate | |
|-------------|--------------|--------------------|--------|---------------|--------|
| | | 2-yr | 100-yr | 2-yr | 100-yr |
| 1 | 1.39 | 0.84 | 0.91 | 4.5 | 9.1 |
| 2 | 0.38 | 0.52 | 0.67 | 0.8 | 1.4 |
| 3 | 4.89 | 0.33 | 0.57 | 6.2 | 21 |
| 4 | 4.94 | 0.84 | 0.91 | 22 | 47 |
| 5 | 6.27 | 0.52 | 0.67 | 11 | 31 |
| 6 | 0.43 | 0.52 | 0.67 | 0.9 | 2.1 |
| 7 | 0.65 | 0.52 | 0.67 | 1.7 | 4.2 |
| 8 | 3.34 | 0.52 | 0.67 | 6.7 | 17 |
| 9 | 0.40 | 0.52 | 0.67 | 0.9 | 2.0 |
| 10 | 0.39 | 0.52 | 0.67 | 0.9 | 1.9 |
| 11 | 2.27 | 0.52 | 0.67 | 4.5 | 11 |
| 12 | 1.41 | 0.52 | 0.67 | 2.9 | 7.0 |
| 13 | 3.01 | 0.39 | 0.57 | 4.5 | 13 |
| 14 | 0.12 | 0.52 | 0.67 | 0.2 | 0.6 |
| 15 | 1.26 | 0.52 | 0.67 | 2.5 | 6.2 |
| 16 | 1.54 | 0.52 | 0.67 | 3.1 | 7.6 |
| 17 | 1.51 | 0.44 | 0.61 | 2.5 | 5.8 |
| 18 | 1.08 | 0.44 | 0.61 | 1.8 | 4.9 |
| 19 | 5.77 | 0.33 | 0.51 | 7.3 | 22 |
| 20 | 0.41 | 0.44 | 0.61 | 0.7 | 1.9 |
| 21 | 2.78 | 0.44 | 0.61 | 3.6 | 9.7 |
| 22 | 0.86 | 0.44 | 0.61 | 1.4 | 3.9 |
| 23 | 18.0 | 0.33 | 0.51 | 20 | 60 |
| 24 | 1.87 | 0.39 | 0.57 | 2.8 | 7.9 |
| 25 | 0.31 | 0.52 | 0.67 | 0.6 | 1.5 |
| 26 | 1.50 | 0.44 | 0.61 | 2.5 | 6.7 |
| 27 | 0.85 | 0.52 | 0.67 | 1.7 | 4.2 |
| 28 | 2.47 | 0.33 | 0.51 | 3.1 | 9.3 |

MINIMUM BUILDING PAD ELEVATIONS FOR
LOWEST OPENING TO THE STRUCTURES

| LOT | BLOCK | ELEVATION MSL |
|-----------------|-------|------------------|
| 1-6 | A | 157.0 |
| 1-8 | B | 176.5 |
| 3-8,14-16,22,23 | C | 178.0 |
| 1-11 | D | 166.0 |

11 FEBRUARY 2002