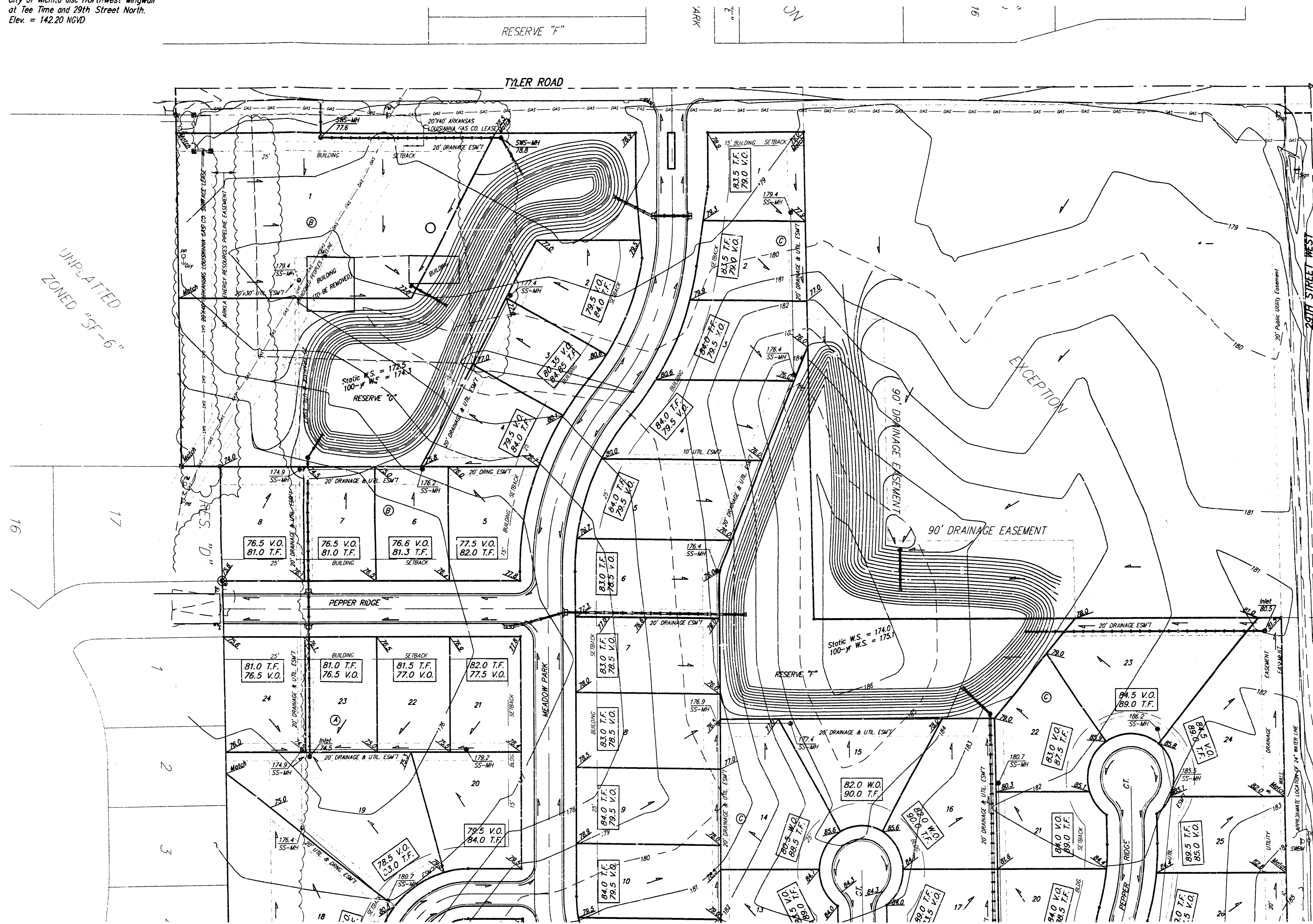
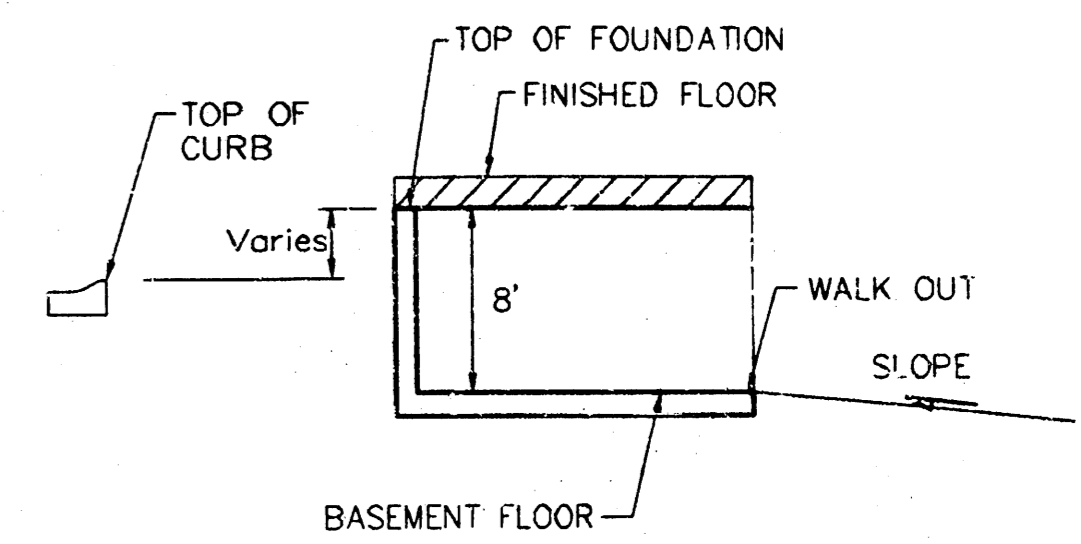
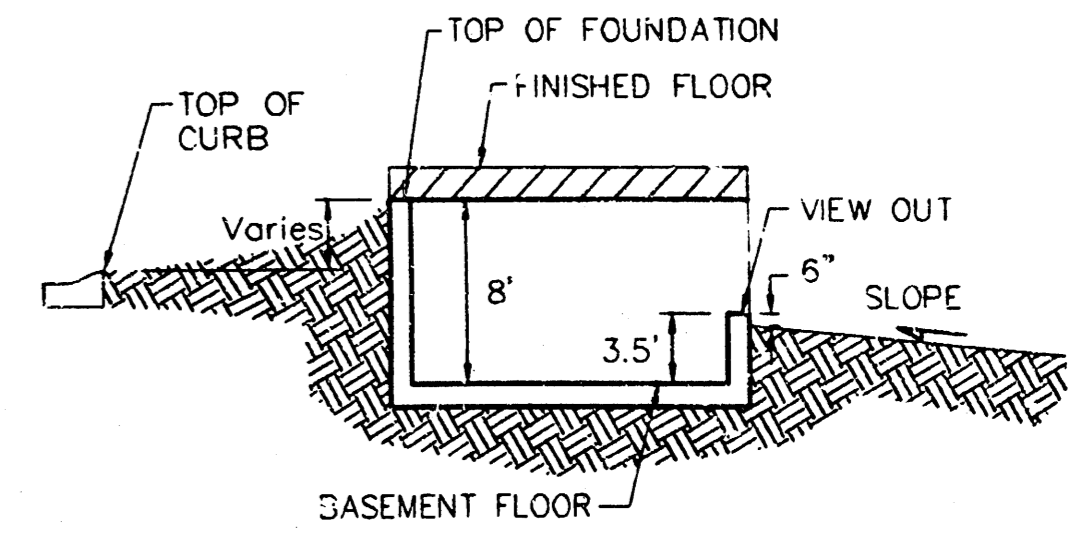


**BENCHMARK:**  
 City of Wichita disc northwest wingwall  
 at Tee Time and 29th Street North.  
 Elev. = 142.20 NGVD



UNPLATED  
 ZONED "SF-6"

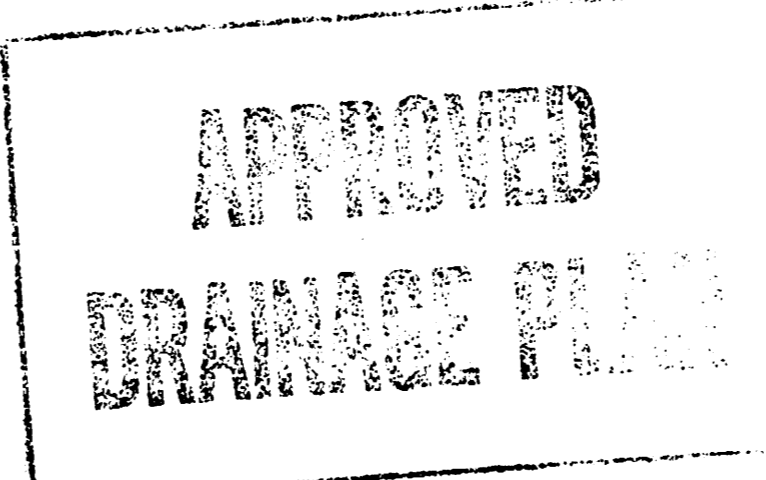
SCALE: 1" = 60'  
 • = IRON



**NOTES:**

- All drainage easements, rights-of-way, or reserves shall remain at established grades or as modified with the approval of the City Engineer of the City of Wichita, Kansas. No obstructions which impede the flow of this drainage system shall be allowed.
- Proposed top of foundation elevations are shown on plans. contractor to set finished floor elevations.
- All street elevations shown on plans are for top of curb (full-height). Typically roll-type curbs are constructed. Deduct 0.25' from top of curb (full-height).
- This Grading Plan is designed with View-Out and Walk-Out Basements. Elevations shown at Rear of House (XX.X V.O. and XX.X W.O.) are for minimum opening.
- All elevations shown on plans are City of Wichita Datum.
- This grading plan has been submitted prior to the plat being recorded by Sedgwick County. Call Baughman Company for the most current grading plan prior to construction.

- 11/29/04 REVISED LOTS 6, 7, 13, 17, 19, BLOCK A BY BDT/AEG
- LOTS 3 & 6, BLOCK B BY BDT/AEG
- LOTS 11 & 14, BLOCK C BY BDT/AEG
- LOTS 7 & 11, BLOCK D BY BDT/AEG
- 7/13/04 REVISED LOT 24, BLOCK A BY BDT/BLP
- 5/03/04 REVISED LOT 14, BLOCK C BY BLP
- 2/18/04 REVISED LOT 22, BLOCK C BY AEG
- 10/13/03 REVISED LOT 8, BLOCK B BY AEG
- 9/2/03 REVISED LOTS 6 & 7, BLOCK C BY AEG



MINIMUM BUILDING PAD ELEVATIONS FOR LOWEST OPENING TO THE STRUCTURES		
LOT	BLOCK	ELEVATION MSL
1-6	A	157.0
1-8	B	176.5
3-8, 14-16, 22, 23	C	178.0
1-11	D	166.0

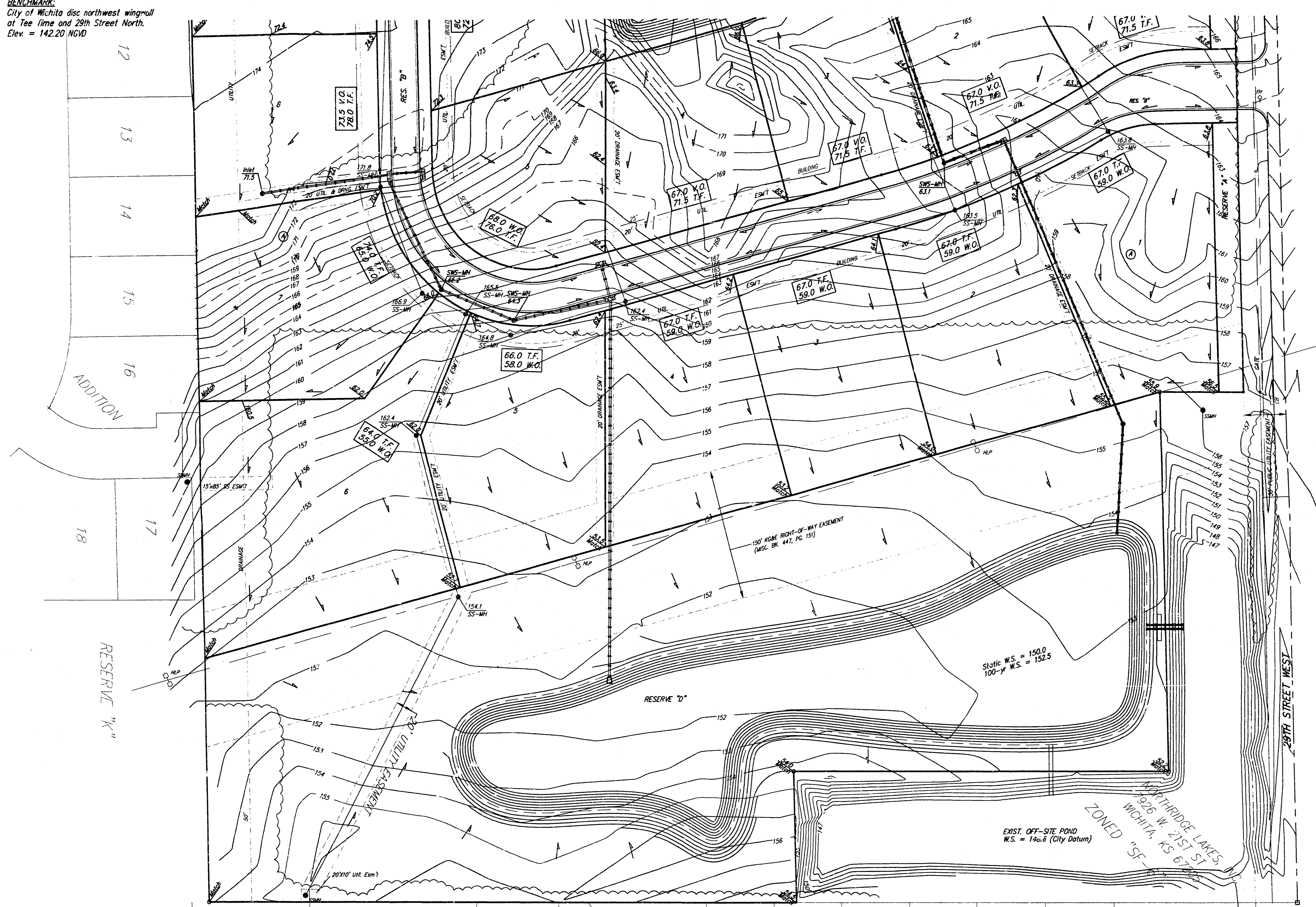
**FOSSIL RIM ESTATES**  
**LOT GRADING PLAN**  
 CITY OF WICHITA, KANSAS

**BAUGHMAN COMPANY P.A.**  
 ENGINEERING, SURVEYING, & PLANNING  
 315-262-7271 • 315 ELLIS • WICHITA, KANSAS 67211

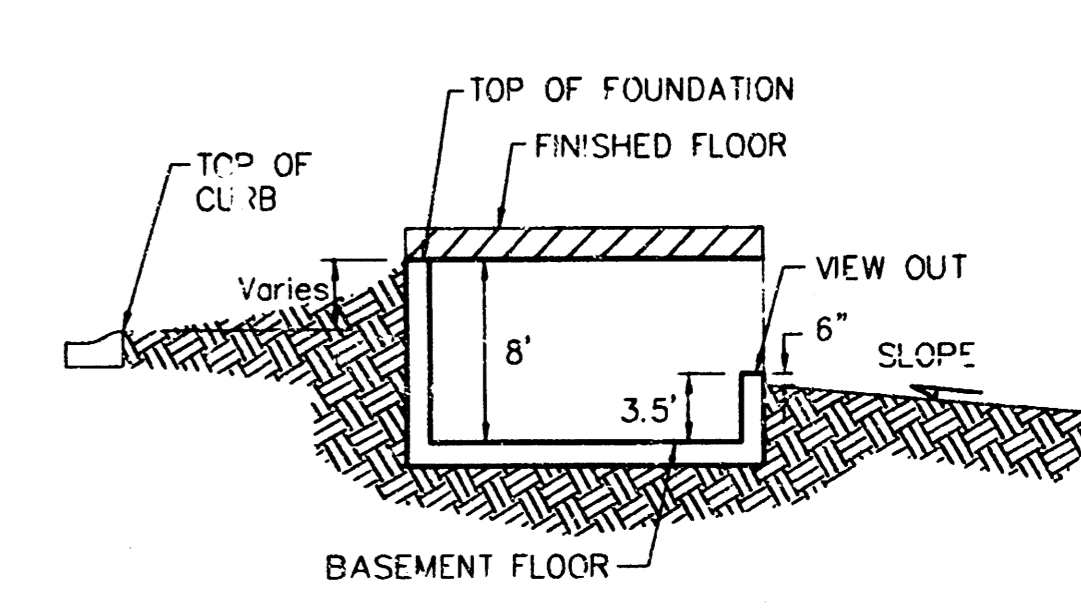
PROJECT NUMBER: \_\_\_\_\_ SHEET: **1**

DESIGN: SCL DRAWN: SCL APPROVED: NEW DATE: 02/11/02 SCALE: 1"=60'

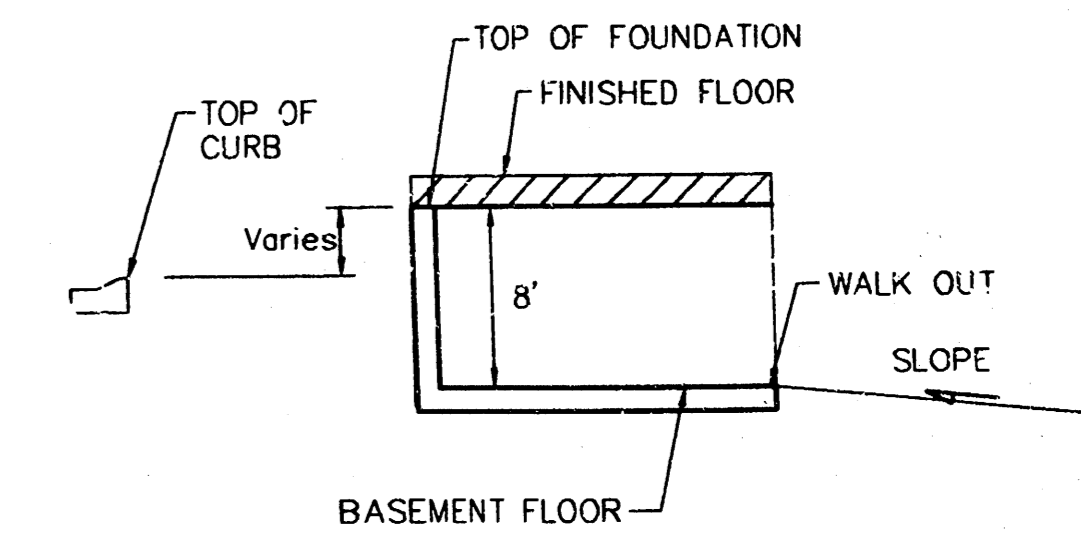
**BENCHMARK:**  
 City of Wichita disc northwest wingwall  
 at Tee lime and 29th Street North.  
 Elev. = 142.20 NGVD



SCALE: 1" = 60'  
 • = IRON



TYPICAL VIEW OUT  
 NO SCALE



TYPICAL WALK OUT  
 NO SCALE

**NOTES:**

All drainage easements, rights-of-way, or reserves shall remain at established grades or as modified with the approval of the City Engineer of the City of Wichita, Kansas. No obstructions which impede the flow of this drainage system shall be allowed.

Proposed top of foundation elevations are shown on plans. contractor to set finished floor elevations.

All street elevations shown on plans are for top of curb (full-height). Typically roll-type curbs are constructed. Deduct 0.25' from top of curb (full-height).

This Grading Plan is designed with View-Out and Walk-Out Basements. Elevations shown at Rear of House (XX.X V.O. and XX.X W.O.) are for minimum opening.

All elevations shown on plans are City of Wichita Datum.

This grading plan has been submitted prior to the plat being recorded by Sedgwick County. Call Baughman Company for the most current grading plan prior to construction.

MINIMUM BUILDING PAD ELEVATIONS FOR LOWEST OPENING TO THE STRUCTURES		
LOT	BLOCK	ELEVATION
1-6	A	157.0
1-8	B	176.5
3-8,14-16,22,23	C	178.0
1-11	D	166.0

**FOSSIL RIM ESTATES**  
**LOT GRADING PLAN**  
 CITY OF WICHITA, KANSAS

**BAUGHMAN COMPANY P.A.**  
 ENGINEERING, SURVEYING, & PLANNING  
 316-262-7271 • 315 ELLIS • WICHITA, KANSAS 67211

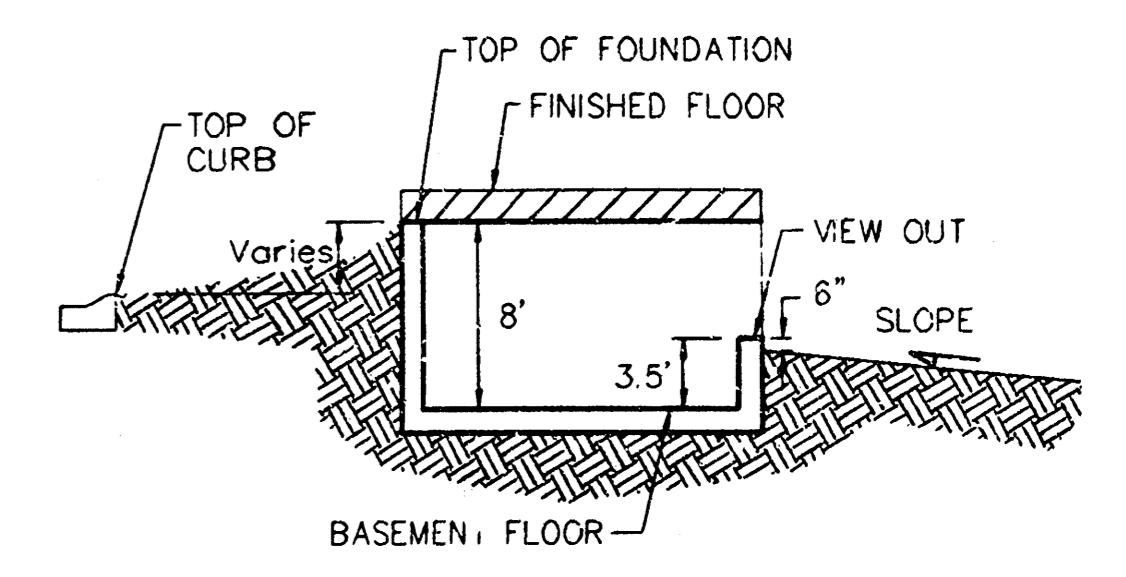
PROJECT NUMBER

DESIGN SCL	DRAWN SCL	APPROVED MFW	DATE 02/11/02	SCALE 1"=60'	SHEET 3 OF 3
---------------	--------------	-----------------	------------------	-----------------	-----------------

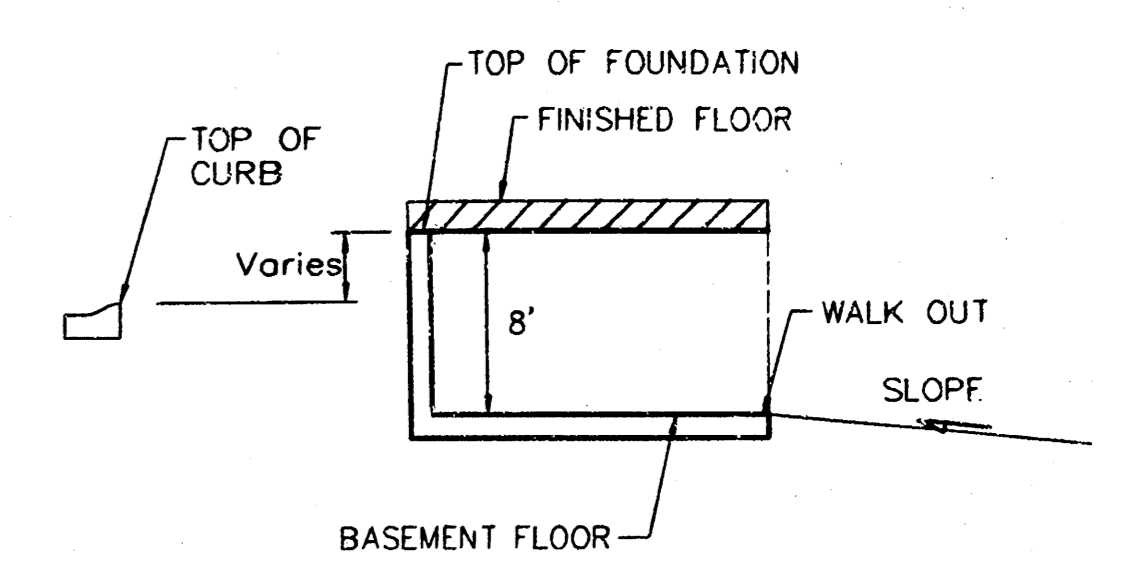
**BENCHMARK:**  
 City of Wichita disc northwest wingwall  
 at Tee Time and 29th Street North.  
 Elev. = 142.20 NGVD



SCALE: 1" = 60'  
 • = IRON



TYPICAL VIEW OUT  
 NO SCALE



TYPICAL WALK OUT  
 NO SCALE

**NOTES:**

All drainage easements, rights-of-way, or reserves shall remain at established grades or as modified with the approval of the City Engineer of the City of Wichita, Kansas. No obstructions which impede the flow of this drainage system shall be allowed.

Proposed top of foundation elevations are shown on plans. Contractor to set finished floor elevations.

All street elevations shown on plans are for top of curb (full-height). Typically roll-type curbs are constructed. Deduct 0.25' from top of curb (full-height).

This Grading Plan is designed with View-Out and Walk-Out Basements. Elevations shown at Rear of House (XX.X V.O. and XX.X W.O.) are for minimum opening.

All elevations shown on plans are City of Wichita Datum.

This grading plan has been submitted prior to the plat being recorded by Sedgewick County. Call Baughman Company for the most current grading plan prior to construction.

MINIMUM BUILDING PAD ELEVATIONS FOR LOWEST OPENING TO THE STRUCTURES			3-5		5			
LOT	BLOCK	ELEVATION NGVD29	C	179.5	D	168.0		
1	A	159.0	6	C	178.0	6	D	172.0
2-6	A	157.0	7,8	C	178.5	7	D	174.5
1-8	B	176.5	14,15	C	180.5	8	D	176.5
			16,22,23	C	182.0	9-10	D	179.0
			1-4	D	166.4	11	D	176.5

**FOSSIL RIM ESTATES**  
**LOT GRADING PLAN**  
 CITY OF WICHITA, KANSAS

**BAUGHMAN COMPANY P.A.**  
 ENGINEERING, SURVEYING, & PLANNING  
 316-262-7271 • 315 ELLIS • WICHITA, KANSAS 67211

PROJECT NUMBER \_\_\_\_\_ SHEET **2** OF **3**

DESIGN: SCL DRAWN: SCL APPROVED: NBF DATE: 02/11/02 SCALE: 1"=60'