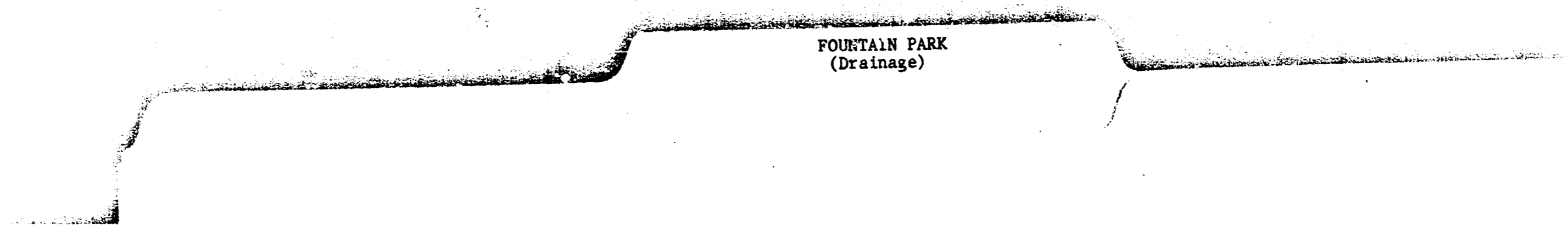


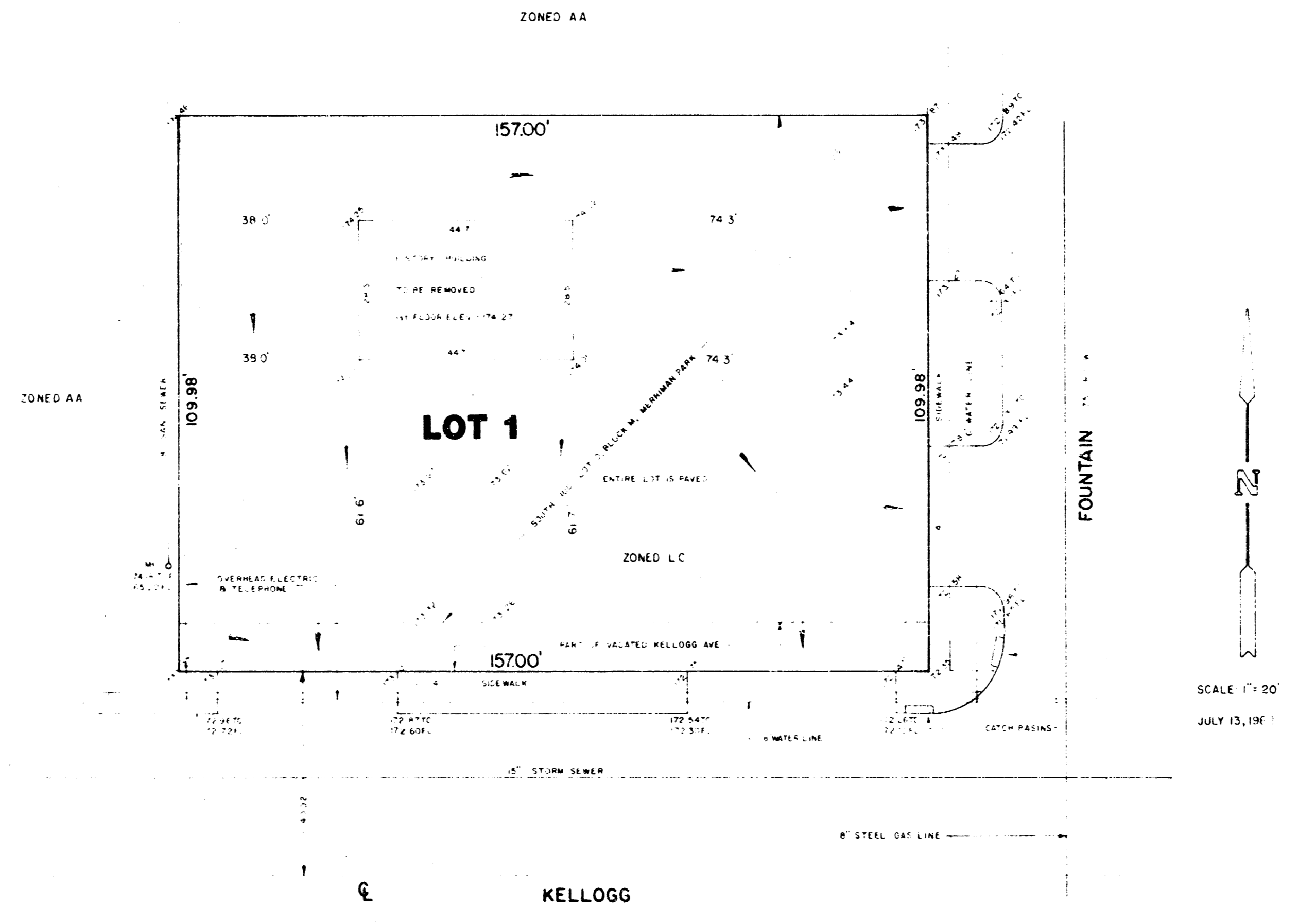
7



DRAINAGE PLAN
FOUNTAIN PARK
WICHITA
SEDWICK COUNTY, KANSAS

TOPOGRAPHIC SURVEY 7/8/84
 BENCH MARK "X" CUT WEST END SOUTHWEST RETURN,
 ORNL B FOUNTAIN, ELEV 1463.35 CITY DATUM

OWNERS:
 DONALD GENE M. HANSON
 RONALD L. MILLER
 MICHAEL W. WILSON
 442 SOUTH OLIVER
 WICHITA, KS 67218



*Drainage should be thru drives or flumes or other
 acceptable method.*


Air Capitol Land Surveyors
 2102 W 21st Street
 WICHITA, KANSAS 67203 (316) 638-9071