

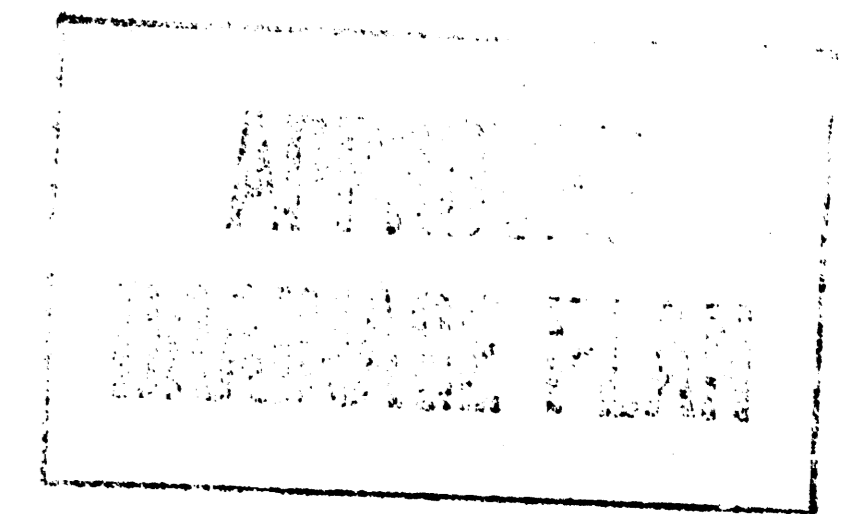
VIEW OUT & PARTIAL VIEW OUT DETAIL

LEGEND

135.0	Proposed Elevations
135.0	Existing Elevations
V.O.	Top of View Wall Elevation
T.F.	Top of Foundation
Pad	Elevation @ Garage Door Elevation
P.V.O. (See Note)	Partial View Wall Elevation
-140-	Proposed Contour
→	Flow Arrow

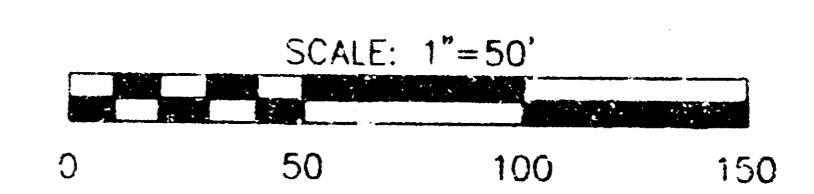
Note: P.V.O.'s may be V.O.'s depending on the number of steps added.

Builders shall drop siding or brick ledges or build a retaining wall to transition between properties.



LOT	BLOCK	MIN. PAD ELEV.	
		C.O.W. DATUM	ELEV. USGS
6		218.0	1403.4
7		218.0	1403.4
8		218.0	1403.4
9		218.0	1403.4
10		218.0	1403.4
11		218.0	1403.4
12		218.2	1403.6
13		218.2	1403.6
14		218.2	1403.6
15		218.2	1403.6
16		218.2	1403.6
17		218.2	1403.6

(SEE FINAL PLAT FOX POINTE SECOND ADDITION)



**FOX POINTE SECOND ADDITION**  
PROJECT NAME

---

**GRADING PLAN**  
SHEET TITLE

---

MID-KANSAS ENGINEERING CONSULTANTS, INC.  
411 N. WEBB ROAD  
WICHITA, KS. 67206  
316-684-9600

DESIGN BY: **KHB**

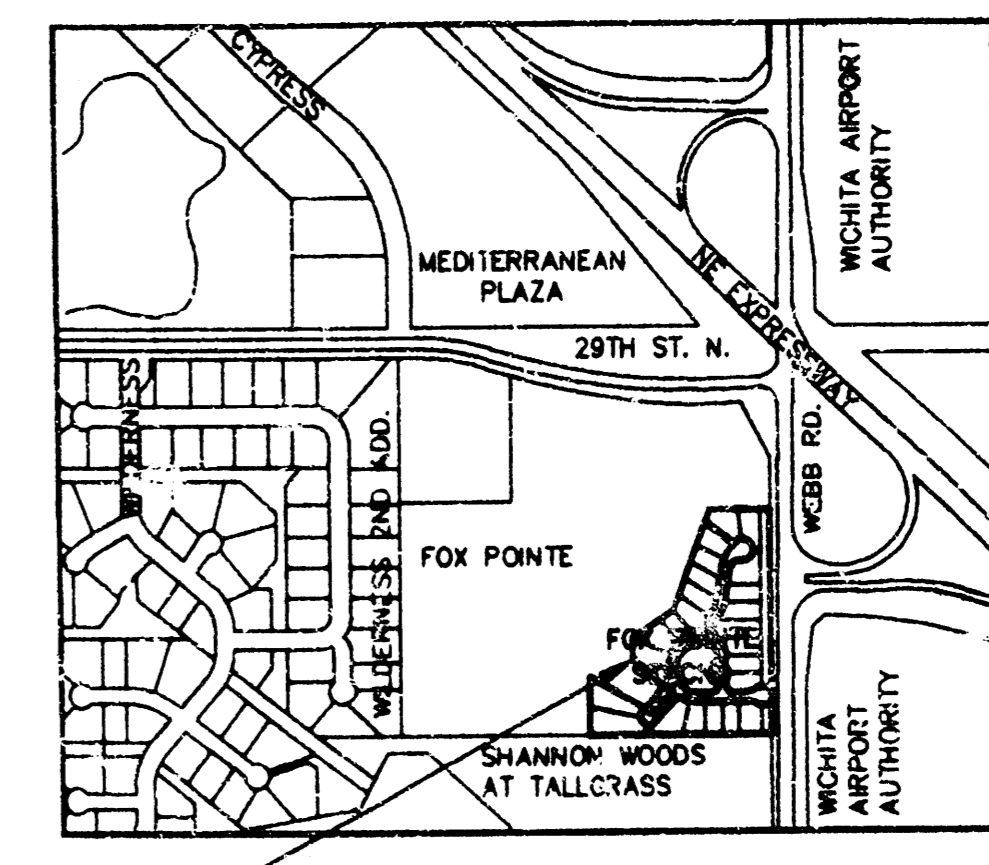
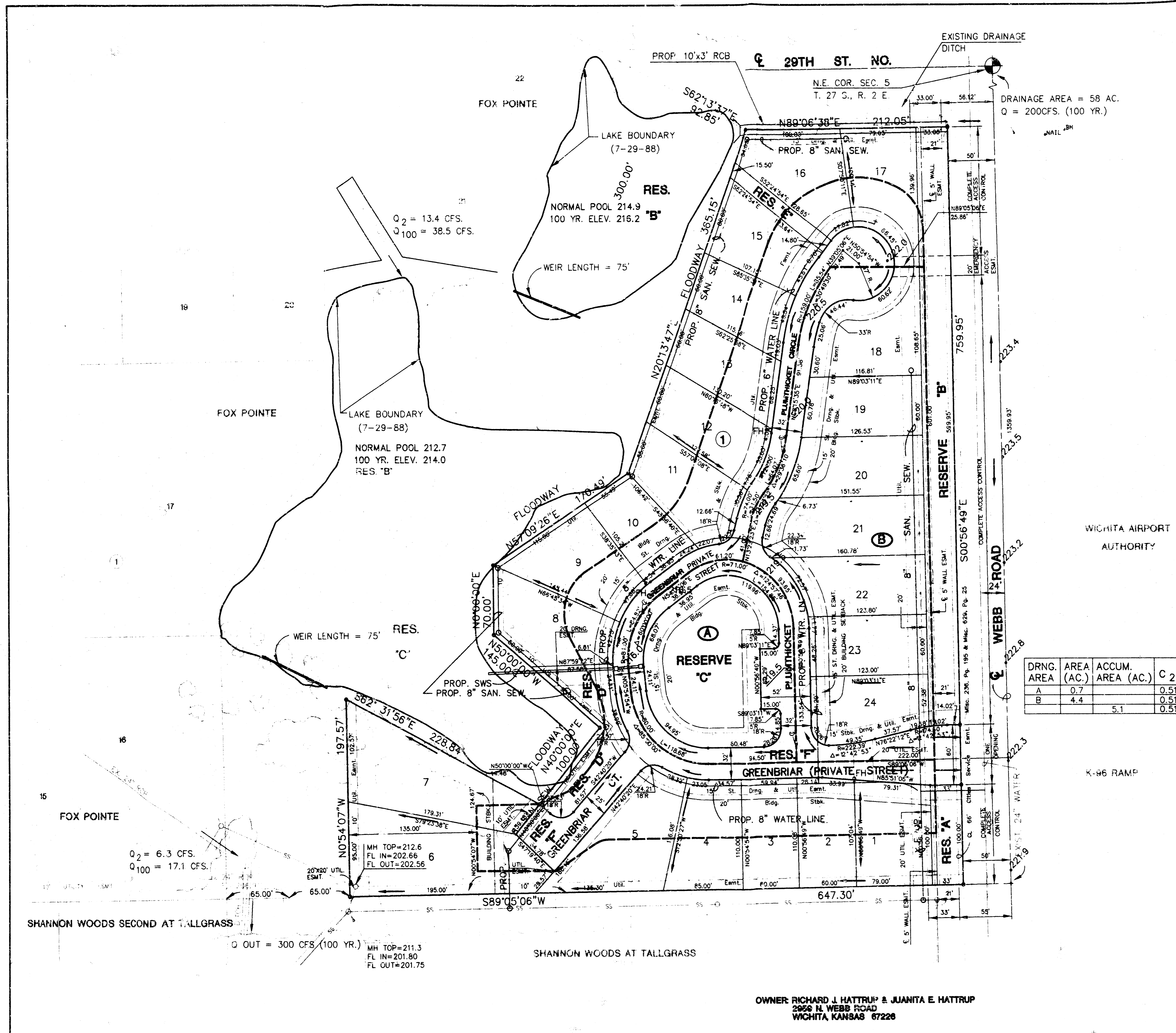
DATE: **AUGUST 1996**

DRAWN BY: **KKL**

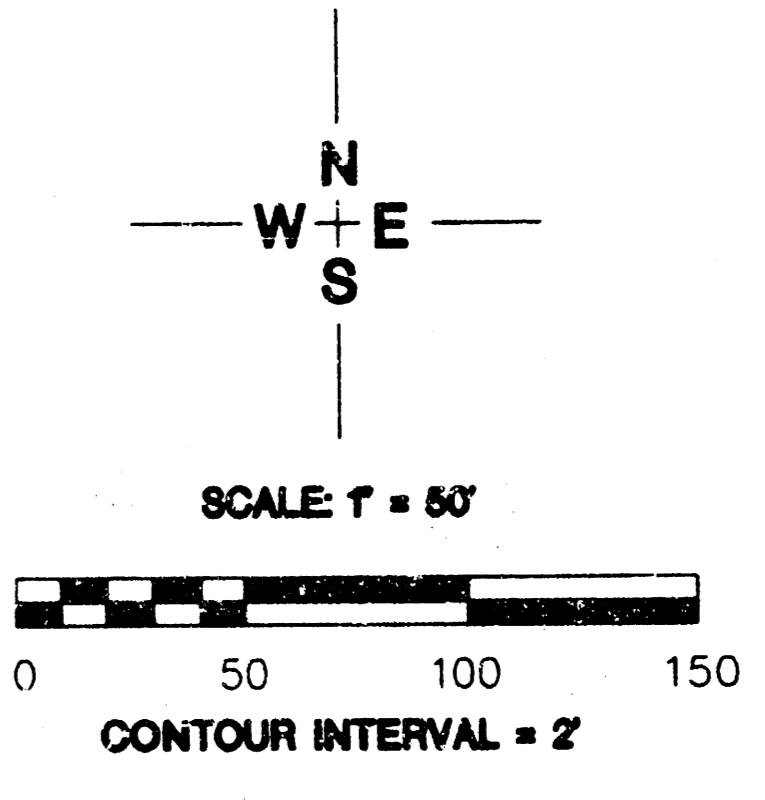
JOB NO.: **95113GRD**

CHECKED BY: **KHB**

SHEET OF: **1 / 1**



**LOCATION MAP**



MINIMUM PAD ELEVATION (LOWEST OPENING)			
LOT	BLOCK	C.O.W. DATUM	MIN. PAD ELEV. USGS
6	1	218.0	1433.4
7	1	218.0	1433.4
8	1	218.0	1433.4
9	1	218.0	1433.4
10	1	218.0	1433.4
11	1	218.0	1433.4
12	1	218.2	1435.6
13	1	218.2	1435.6
14	1	218.2	1435.6
15	1	218.2	1435.6
16	1	218.2	1435.6
17	1	218.2	1435.6
18	1	218.2	1435.6
19	1	218.2	1435.6

DRNG. AREA (AC.)	ACCUM. AREA (AC.)	C 2	C 100	Tc (2)	Tc (100)	I 2	I 100	Q2	Q2	PIPE SIZE	INLET	NOTES
A	0.7	0.51	0.68	15	15	3.83	7.37	1.4	3.5	15" RCP @ 0.4%	Li = 5'	100 YR.
B	4.4	0.51	0.68	15	15	3.83	7.37	8.6	22.1	30" RCP @ 0.4%	Li = 10'	100 YR.
		0.51	0.68	15	15	3.83	7.37	10.0	25.6			

MID-KANSAS ENGINEERING CONSULTANTS, INC.  
411 N. WEBB ROAD  
WICHITA, KS. 67206  
316-684-9600

**FOX POINTE SECOND ADDITION**  
PROJECT NAME

**DRAINAGE PLAN**  
SHEET TITLE

DESIGN BY: DLM      DRAWN BY: GA      CHECKED BY: GA

DATE: DEC, 1995      JOB NO.: 95113      SHEET/OF: 1 / 1

OWNER: RICHARD J. HATTRUP & JUANITA E. HATTRUP  
2950 N. WEBB ROAD  
WICHITA, KANSAS 67226