

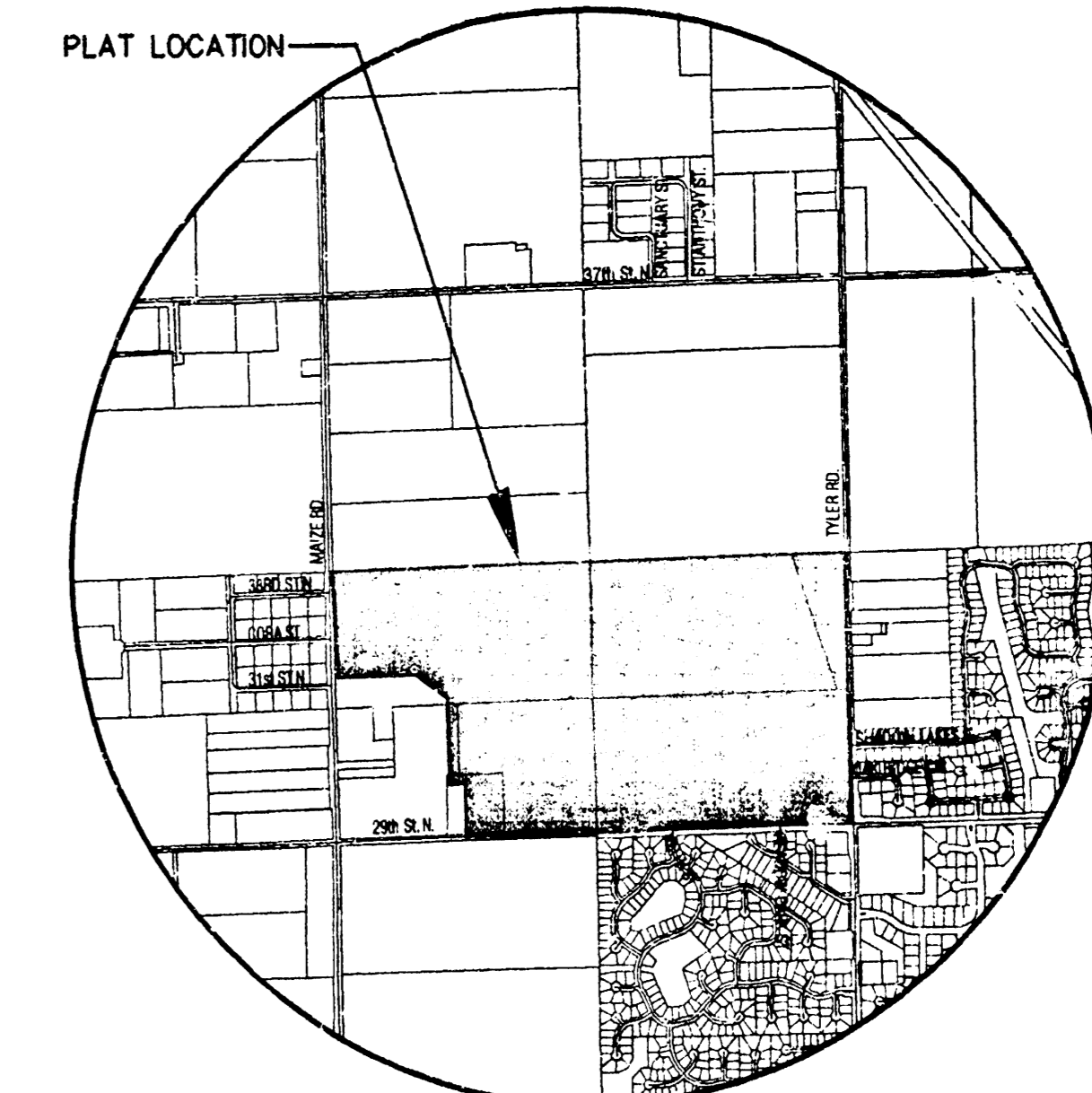
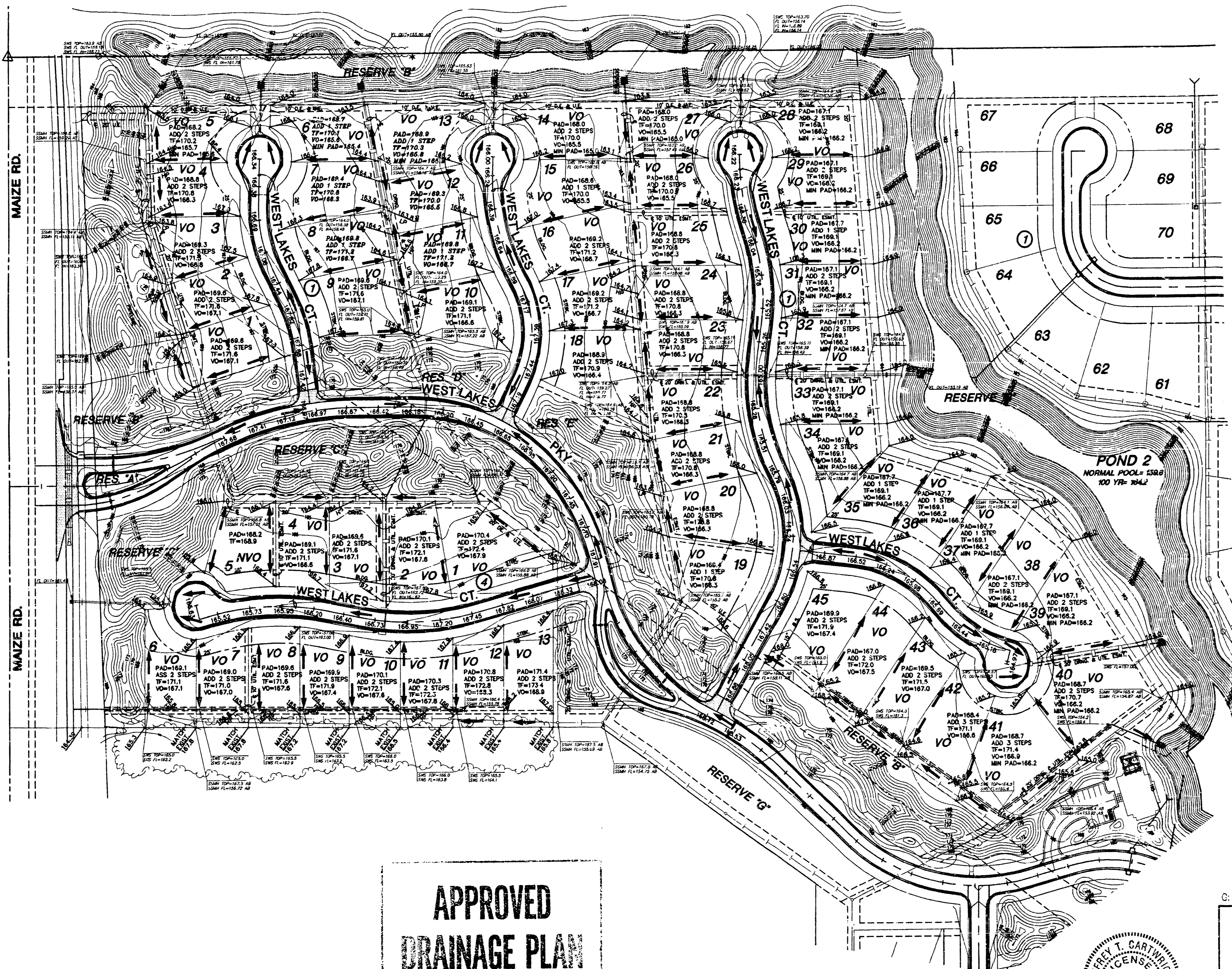
BENCHMARKS

- BM#1 C.O.W. disc 0.5 miles east of Maize Rd. on 29th St. N. 25' ± N. of centering of 29th St. Elev.=160.86
- BM#6 RR Spike in South face of South H-pole 6th H-pole West of Tyler Rd. and 1/2 Mile N. of 29th St. N. Elev.=166.37
- BM#7 PK nail(point numbered 201) in asphalt on bike path 60 feet South of 33rd St. N. on East side of Maize Rd. 28 feet NW. of PP. Elev.=163.97
- BM#9 RR sike in NW face of PP N. side of 29th St. N., 6th PP West of C.O.W. Disc (Disc 1/2 mile East of Maize Rd. Elev.=164.55



SCALE: 1" = 100'
100 0 100 200

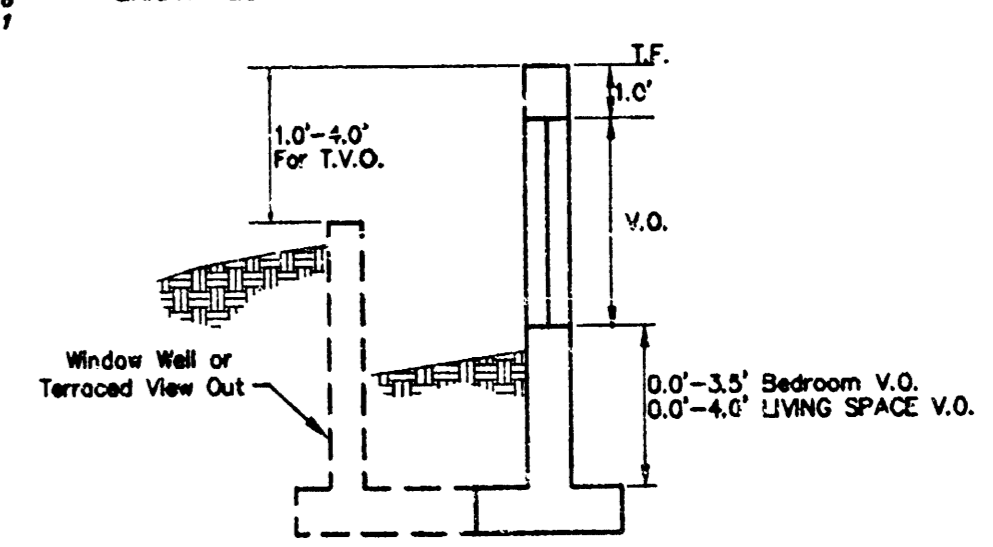
LOT	BLOCK	MINIMUM PAD ELEVATIONS (LOWEST OPENINGS)		HYDRAULIC GRADE LINE (GVY)
		ELEVATION (CITY DATUM)	ELEVATION (NGVD)	
1	1	N/A	N/A	165.2
2	1	N/A	N/A	165.2
3	1	N/A	N/A	164.7
4	1	N/A	N/A	164.7
5	1	165.6	1353.0	163.8
6	1	165.4	1352.8	164.4
7	1	N/A	N/A	165.0
8	1	N/A	N/A	165.0
9	1	N/A	N/A	165.3
10	1	N/A	N/A	165.3
11	1	N/A	N/A	165.3
12	1	N/A	N/A	165.0
13	1	165.2	1352.6	164.4
14	1	165.0	1352.4	163.5
15	1	N/A	N/A	163.5
16	1	N/A	N/A	164.3
17	1	N/A	N/A	164.3
18	1	N/A	N/A	164.4
19	1	N/A	N/A	164.9
20	1	N/A	N/A	164.9
21	1	N/A	N/A	164.9
22	1	N/A	N/A	164.4
23	1	N/A	N/A	164.4
24	1	N/A	N/A	164.3
25	1	N/A	N/A	164.3
26	1	N/A	N/A	163.5
27	1	165.0	1353.6	163.5
28	1	166.2	1353.6	163.5
29	1	166.2	1353.6	163.5
30	1	166.2	1353.6	163.5
31	1	166.2	1353.6	163.5
32	1	166.2	1353.6	163.5
33	1	166.2	1353.6	163.5
34	1	166.2	1353.6	163.5
35	1	166.2	1353.6	163.5
36	1	166.2	1353.6	163.5
37	1	166.2	1353.6	163.5
38	1	166.2	1353.6	163.5
39	1	166.2	1353.6	163.5
40	1	166.2	1353.6	163.5
41	1	166.2	1353.6	163.5
42	1	N/A	N/A	163.5
43	1	N/A	N/A	163.5
44	1	N/A	N/A	163.5
15	1	N/A	N/A	163.5
1	4	N/A	N/A	166.5
2	4	N/A	N/A	166.5
3	4	N/A	N/A	166.5
4	4	N/A	N/A	166.5
5	4	N/A	N/A	166.5
6	4	N/A	N/A	165.6
7	4	N/A	N/A	165.6
8	4	N/A	N/A	165.6
9	4	N/A	N/A	163.7
10	4	N/A	N/A	163.7
11	4	N/A	N/A	163.7
12	4	N/A	N/A	163.7
13	4	N/A	N/A	163.7



VICINITY MAP

LEGEND

- CTH - CONIFEROUS TREE & DIAMETER
- DTH - DECIDUOUS TREE & DIAMETER
- SN - SIGN
- BUSH
- EDGE OF TREES
- FENCE
- SSMH - SANITARY SEWER MANHOLE
- GM - GAS METER
- POLE - POLE
- HL - HIGH LINE POLE
- GATE
- WALL
- LP - LIGHT POLE
- FP - FIRE HYDRANT
- WV - WATER VALVE
- WM - WATER METER
- PP - POWER POLE AND GUY ANCHOR
- TR - TELEPHONE RISER
- INLET
- PROP. HOUSE ELEV.
- EXIST. PLOT PLAN HOUSE ELEV.
- STORM SEWER PIPE
- WATER LINE
- SANITARY SEWER LINE
- GAS LINE
- TELEPHONE LINE
- UNDERGROUND ELECTRIC LINE
- OVERHEAD TELEPHONE
- OVERHEAD ELECTRIC
- UNDERGROUND FIBER OPTIC CABLE
- SECTION CORNER
- PROPERTY CORNER FOUND
- BENCHMARK
- WO - WALK OUT
- VO - VIEW OUT
- PVO - PARTIAL VIEW OUT
- PWO - PARTIAL WALK OUT
- NVO - NO VIEW OUT
- WO* - WALKOUT WHICH MAY REQUIRE THICKER FOOTING AND/OR ENGINEERED FILL UNDER FOOTINGS

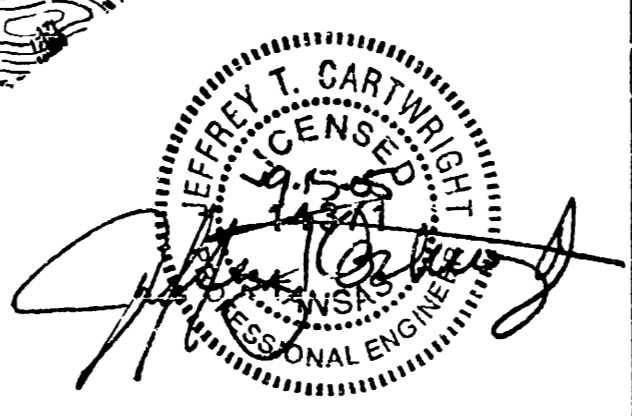


VIEW OUT & TERRACED VIEW OUT DETAIL

**APPROVED
DRAINAGE PLAN**

PHASE 2 - LOT GRADING PLAN FOX RIDGE ADDITION

REVISED: SEPTEMBER 2005
REVISED: AUGUST 2005
DATE: NOVEMBER 2004



C:\CIVIL\99118\DWG\GRAD\Lot Grading Plans\99118_VO-WO_MAP-Phase2.dwg

FOX RIDGE ADDITION (PHASE 2)
PROJECT NAME

PHASE 2 - VIEW-OUT / WALK-OUT MAP
SHEET TITLE

MKEC ENGINEERING CONSULTANTS
411 N. WEBB ROAD
WICHITA, KS. 67206
316-624-9600

DESIGN BY: SMD/KWS DRAWN BY: GJA CHECKED BY: GJA

DATE: AUGUST 2005 1 / 1
JOB NO. 99118_VO-WO_MAP SHEET/07