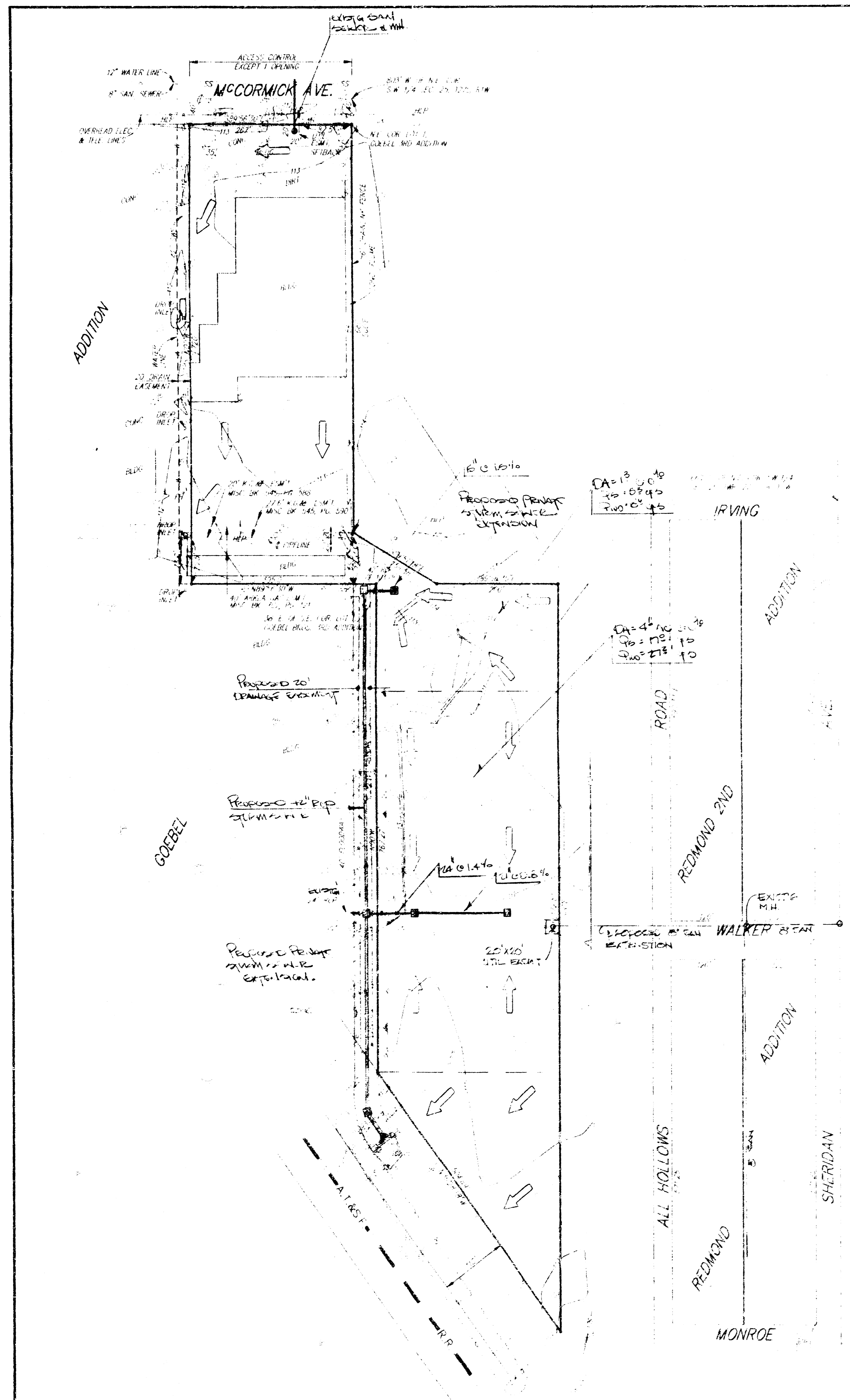


SKETCH PLAT GOEBEL BROS. 4TH ADDITION

WICHITA, SEDGWICK COUNTY, KANSAS



PART OF LOT 1, GOEBEL BROS. 3RD ADDITION TOGETHER WITH A PART OF THE SW 1/4 OF SEC 25, TWP 27 S, R 17 W OF THE 6TH PM MERIDIAN, SEDGWICK COUNTY, KANSAS, BEING AS FOLLOWS: AT THE N.W. COR. OF SAID SW 1/4, THENCE WEST ALONG THE NORTH LINE OF SAID SW 1/4, 400 FEET, BEING 100% PARALLEL WITH THE EAST LINE OF SAID SW 1/4, 400 FEET FOR A PLACE OF BEGINNING, THENCE SOUTH 89° 45' 00\"/>

DRAINAGE & UTILITY PLAN