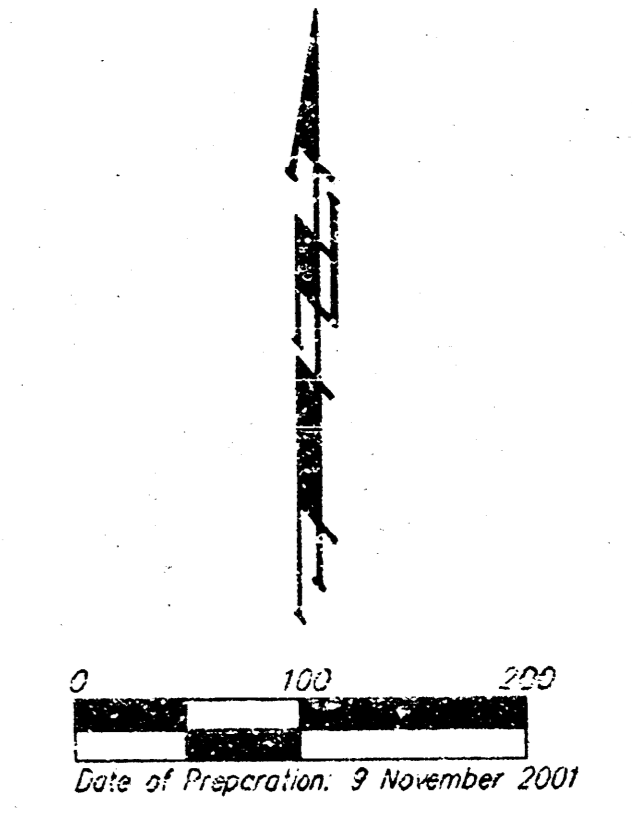
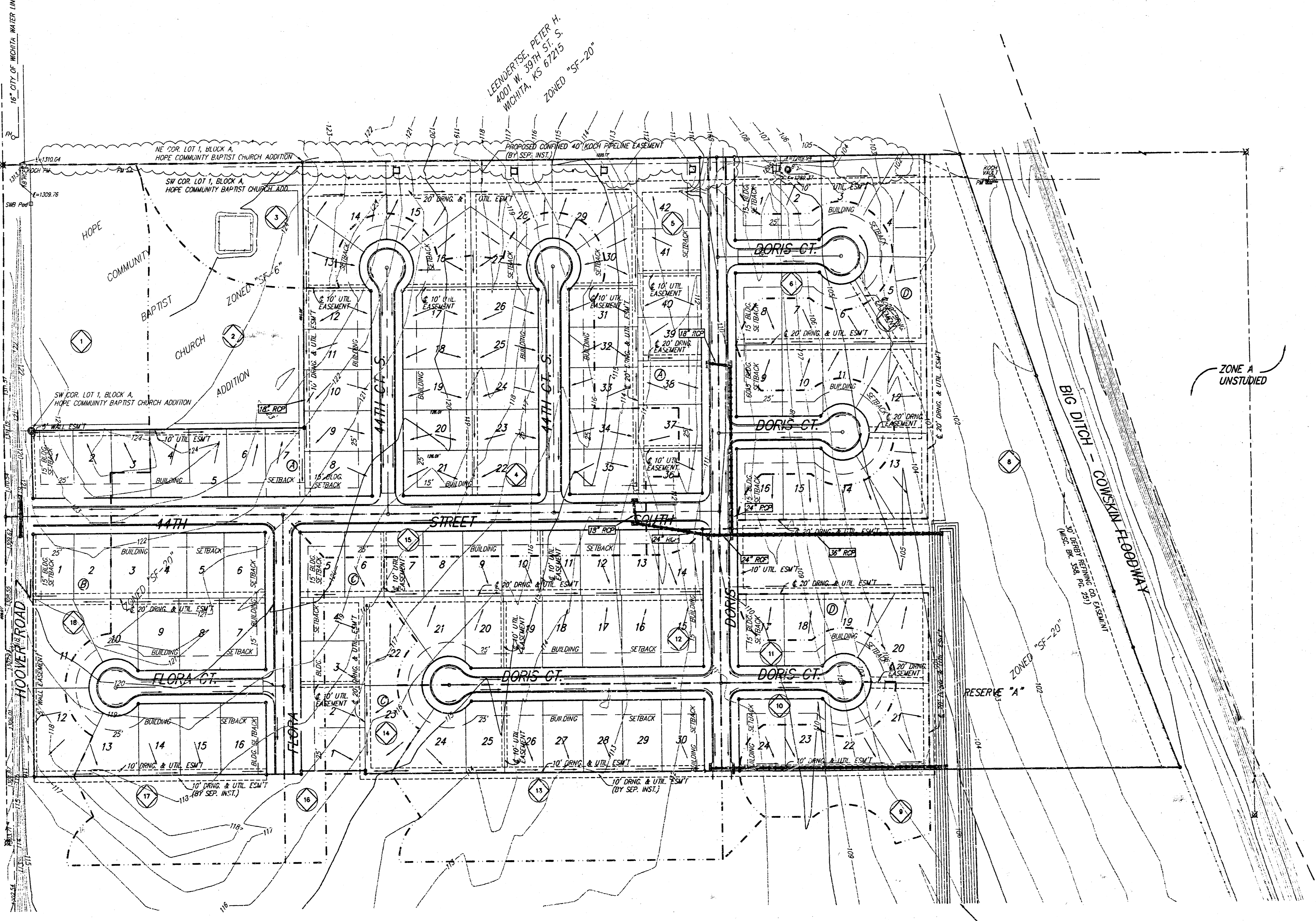


# DRAINAGE PLAN GRAY'S 5TH ADDITION WICHITA, SEDGWICK COUNTY, KANSAS



WALL, ALICE W. REVOCABLE TRUST  
 & PERCIVAL J. MARK, TRUSTEE  
 4001 W. RIDGEWOOD DR.  
 WICHITA, KS 67208  
 ZONED "SF-20"



- = #4 Rebar w/ "Baughman" cap (Set)
- ⊗ = Section cor. (Found)
- = 1/2" Iron (Found)
- ⊖ = #5 Rebar (Found)
- (M) = Measured
- (D) = Described
- (P) = Platting
- (C) = Calculated

**REMARKS:**  
 City also 41.00' north and 69.00' east of centerline of Hoover and MacArthur.  
 Elev. = 1308.62 NGVD29 (121.22 City Datum)

**NOTE:**  
 A master grading plan for drainage has been developed for this subdivision and is on file with the City of Wichita, Kansas. All drainage easements, rights-of-way, or reserves shall remain of established grades or as modified with the approval of the City Engineer. City of Wichita, Kansas. No obstructions which impede the flow of this drainage system are allowed.

Minimum Building Pad Elevations for Lowest Opening to the Structures			
Lot	Block	City Datum	Elevation
4-5	D	105.6	1281.0
12-21	D	105.6	1293.0

Basin ID	Area acres	Runoff Coefficient			Peak Flowrate		
		2-yr	5-yr	100-yr	2-yr	5-yr	100-yr
1	3.7	0.42	0.44	0.59	6.0	7.4	28
2	1.9	0.42	0.44	0.59	3.1	3.9	15.3
3	1.2	0.42	0.44	0.59	1.9	2.4	9.2
4	7.8	0.42	0.44	0.59	13	16	58
5	4.5	0.42	0.44	0.59	7.4	9.2	35
6	2.7	0.42	0.44	0.59	4.3	5.4	21
7	1.0	0.42	0.44	0.59	0.8	1.0	4.1
8	7.5	0.42	0.44	0.59	12	15	57
9	2.1	0.42	0.44	0.59	3.4	4.2	17
10	0.8	0.42	0.44	0.59	1.3	1.6	6.5
11	0.7	0.42	0.44	0.59	1.1	1.4	5.0
12	3.2	0.42	0.44	0.59	5.1	6.4	24
13	1.2	0.42	0.44	0.59	0.8	1.0	4.1
14	1.2	0.42	0.44	0.59	1.9	2.4	9.2
15	1.1	0.42	0.44	0.59	1.8	2.3	8.8
16	1.0	0.42	0.44	0.59	1.6	2.0	7.3
17	5.1	0.42	0.44	0.59	8.2	10	37
18	1.7	0.42	0.44	0.59	2.7	3.4	12.8

Channel Section to be constructed to proposed crossing at 47th St. South