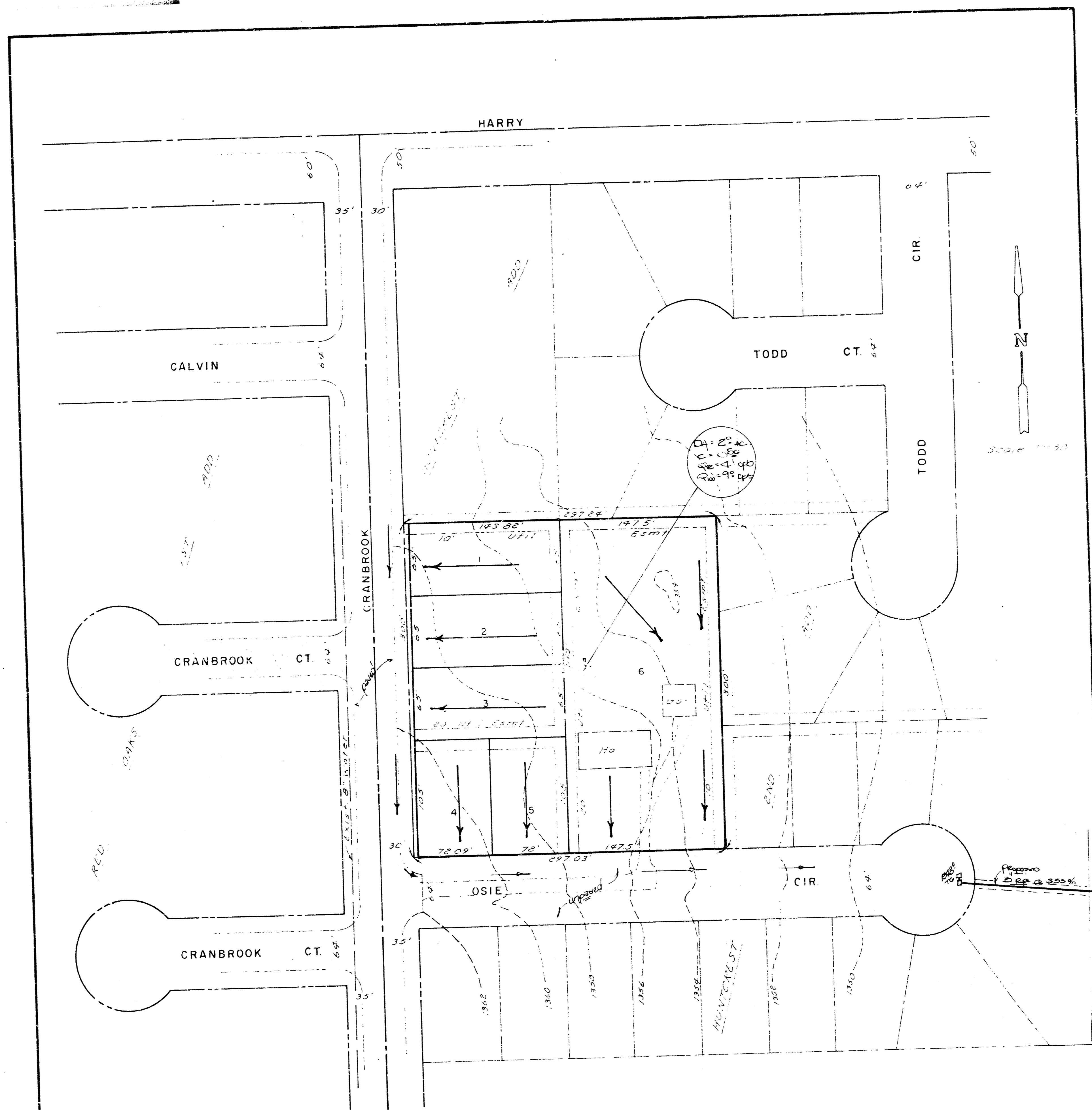


GRUNDMAN ADDITION
(Drainage)



SKETCH PLAT
GRUNDMAN ADDITION
 A REPLAT OF LOTS 7 & 8, HUNTCREST ADD.
DRAINAGE PLAN

• GENERAL NOTES •
 Lots 1-6 will be developed for residential lots and will drain to Cranbrook and Osie Circle. Osie Circle is not paved presently. Storm sewer is planned for Osie Circle as indicated which will discharge east into the drainage channel.

B.M. NW Cor. N. Hd. W. R.C.B.
 800' S. NW Cor. N.E. 1/4
 Sec. 38, 27, 4E
 T. 1, 33, 9 N. R. 47 (See plan)

Oct 15, 1935
ED BAUGHMAN COMPANY, P.A.
 SURVEYING & ENGINEERING
 316-662-7271 • 330 LAURA • WICHITA, KANSAS 67211