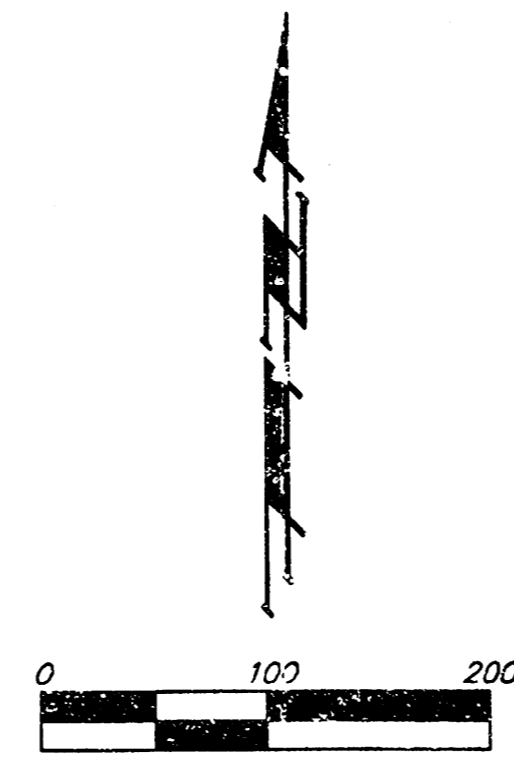


DRAINAGE PLAN

HAAG INDUSTRIAL PARK 2ND ADDITION

WICHITA, SEDGWICK COUNTY, KANSAS

MINIMUM BUILDING PAD ELEVATIONS FOR LOWEST OPENING TO THE STRUCTURES			
LOT	BLOCK	NOV29	CITY DATUM
2	A	1,300.0	112.8

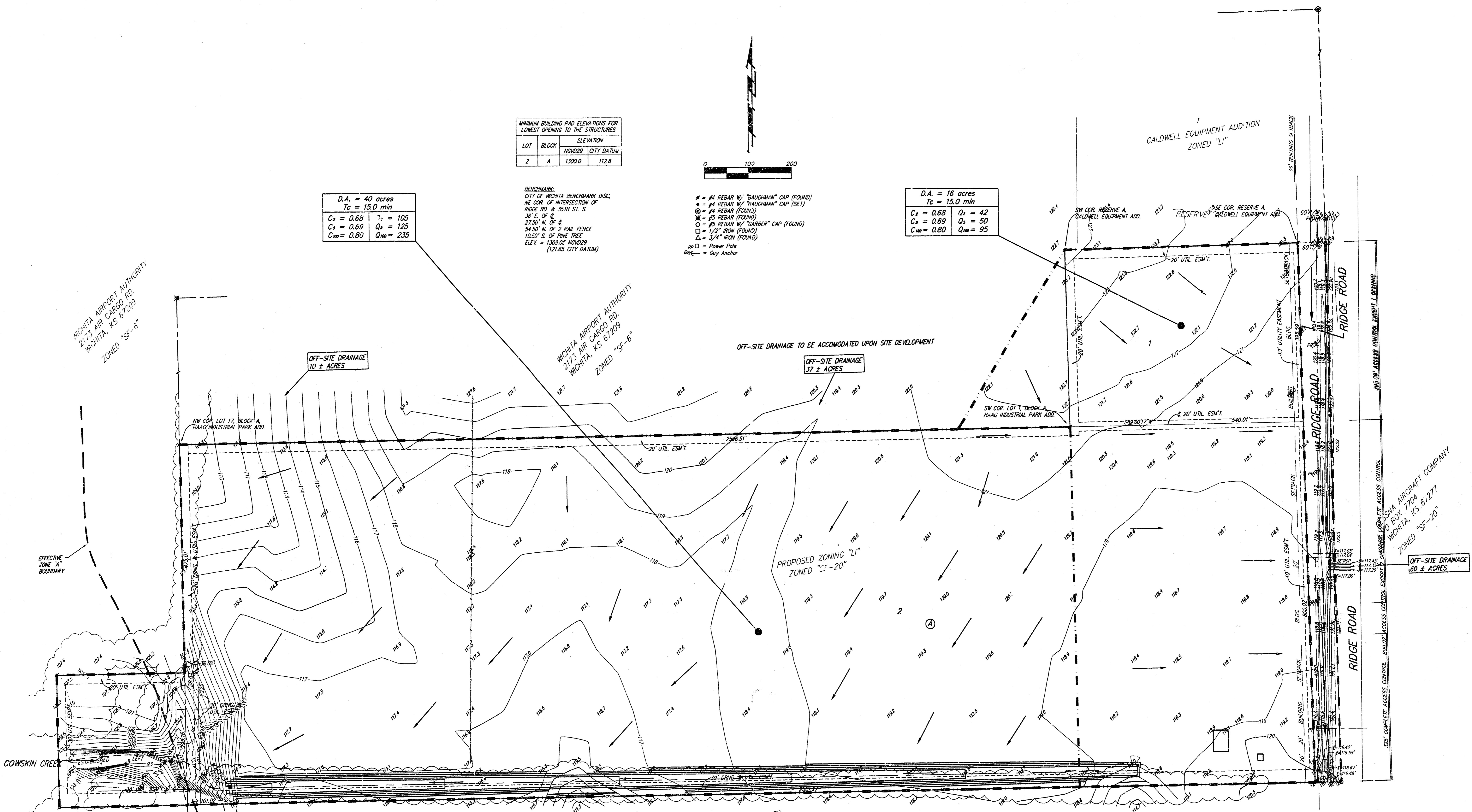


D.A. = 40 acres
Tc = 15.0 min
C_s = 0.68 n_s = 105
C_s = 0.69 Q_s = 125
C₁₀₀ = 0.80 Q₁₀₀ = 235

BENCHMARK:
CITY OF WICHITA BENCHMARK DISC.
NE COR. OF INTERSECTION OF
RIDGE RD. & 15TH ST. S
38' E. OF E.
22.50' N. OF E.
54.50' N. OF 2 RAIL FENCE
10.50' S. OF PINE TREE
ELEV. = 1300.00 NOV29
(121.85 CITY DATUM)

- # = #4 REBAR W/ "BAUGHMAN" CAP (FOUND)
- * = #4 REBAR W/ "BAUGHMAN" CAP (SET)
- ⊙ = #4 REBAR (FOUND)
- ⊛ = #5 REBAR (FOUND)
- = #5 REBAR W/ "GARBER" CAP (FOUND)
- = 1/2" IRON (FOUND)
- △ = 3/4" IRON (FOUND)
- PP □ = Power Pole
- GP □ = Guy Anchor

D.A. = 16 acres
Tc = 15.0 min
C_s = 0.68 Q_s = 42
C_s = 0.69 Q_s = 50
C₁₀₀ = 0.80 Q₁₀₀ = 95

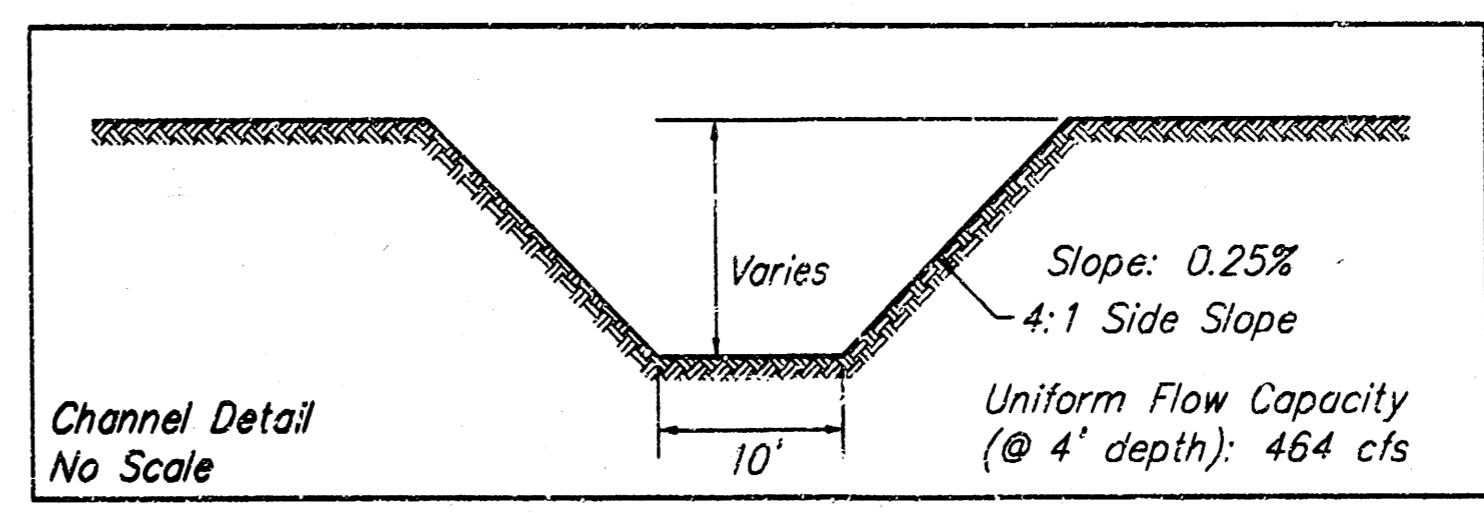


WICHITA AIRPORT AUTHORITY
2173 AIR CARGO RD.
WICHITA, KS 67209
ZONED "SF-6"

WICHITA AIRPORT AUTHORITY
2173 AIR CARGO RD.
WICHITA, KS 67209
ZONED "SF-6"

SM AIRCRAFT COMPANY
PO BOX 7704
WICHITA, KS 67277
ZONED "SF-20"

ANDREW S. & KATHLEEN M. LAUER
4250 S. TYLER
WICHITA, KS 67215
ZONED "SF-20"



Revised 11/12/2004

Baughman Company, P.A.
315 8th St. Wichita, KS 67211 P 316-262-7271 F 316-262-0149
ENGINEERING | SURVEYING | PLANNING | LANDSCAPE ARCHITECTURE
E:\PLAT\HAAG INDUSTRIAL PARK 2ND.DWG\HAMAZP.DWG MGC