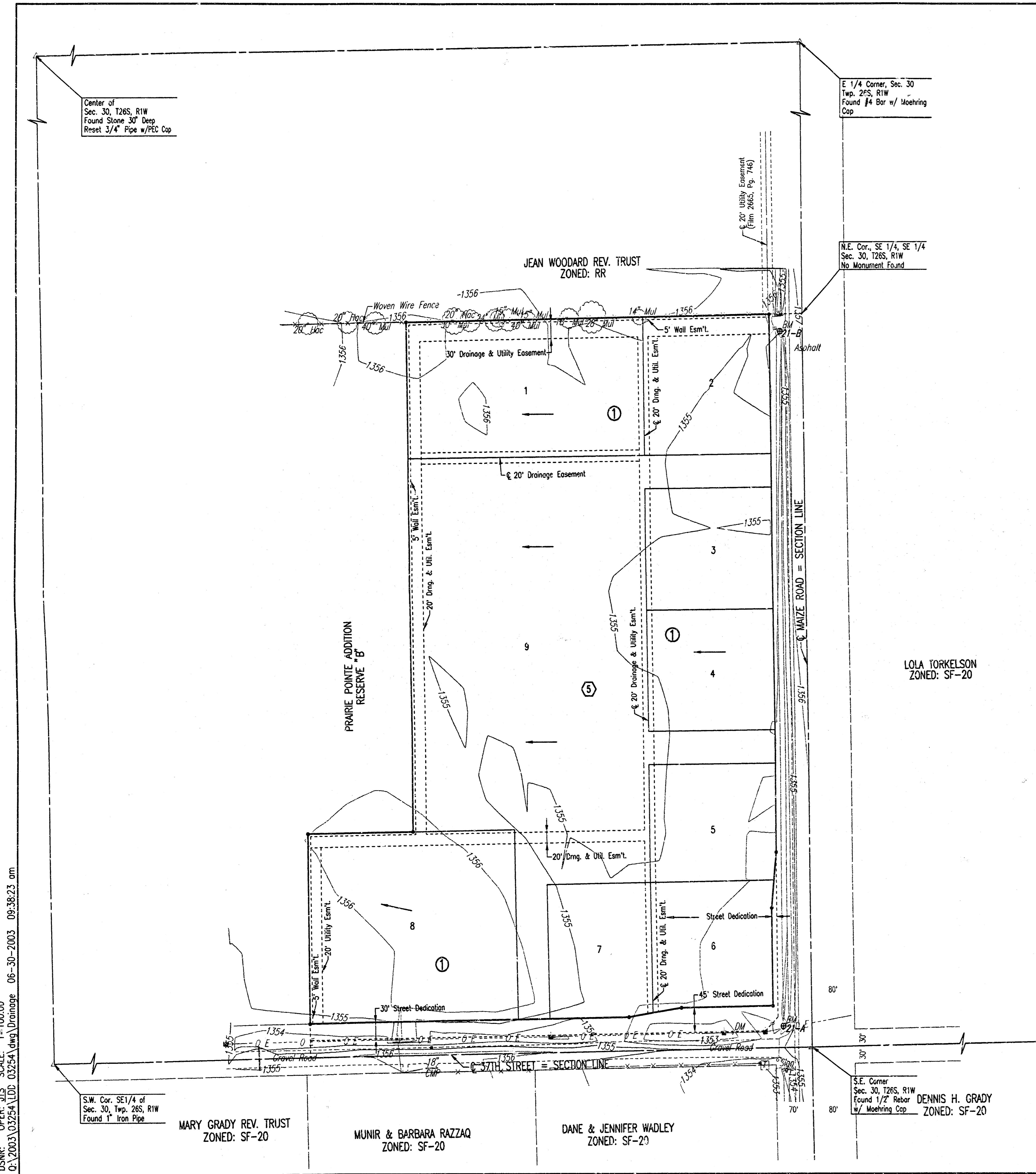
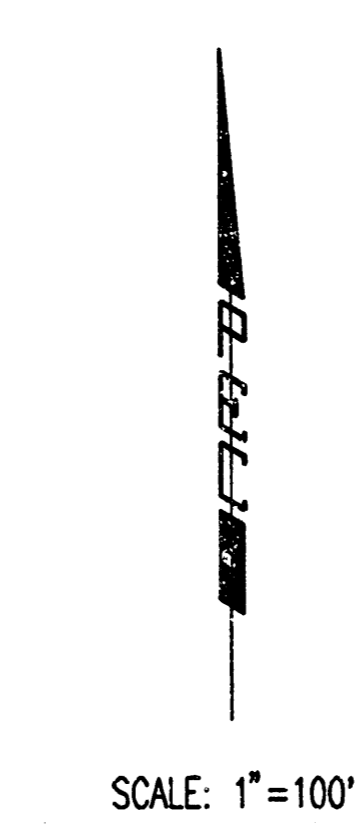


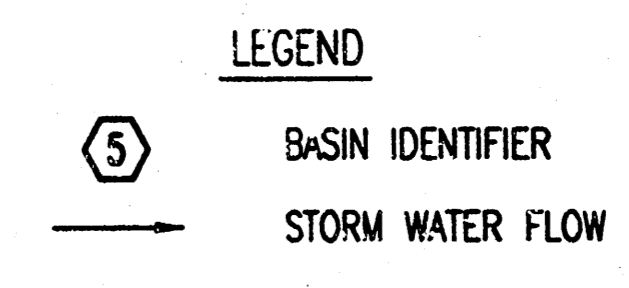
DRAINAGE PLAN FOR
HAMPTON SQUARE
AN ADDITION TO WICHITA, SEDGWICK COUNTY, KANSAS



DS#NR: OPER: JLS SCALE: 1"=100.00
 0:12003\03254\UD: 03254\UD: Drainage 06-30-2003 09:38:23 am



- BENCHMARKS:**
- B.M. 21 "1" POST 72" W. OF CLN. MAIZE ROAD 1" N. OF LINE OF FENCE TO W. AT THE E. END OF A FENCE.
ELEV = 1356.79 N.G.V.D.
ELEV = 168.39 CITY OF WICHITA DATUM
 - B.M. 21-B CHISELED "d" S. END 30"x19" RCP ON THE E. PIPE OF DOUBLE PIPE 1280' N. AND 58' W. OF 37TH AND MAIZE R.O.V.
ELEV = 1355.34 N.G.V.D.
ELEV = 167.94 CITY OF WICHITA DATUM
 - B.M. 21-A CHISELED "d" N. END 30"x19" RCP ON THE W. PIPE OF TRIPLE PIPE AT THE NW CORNER OF 37TH AND MAIZE RD.
ELEV = 1354.18 N.G.V.D.
ELEV = 166.78 CITY OF WICHITA DATUM

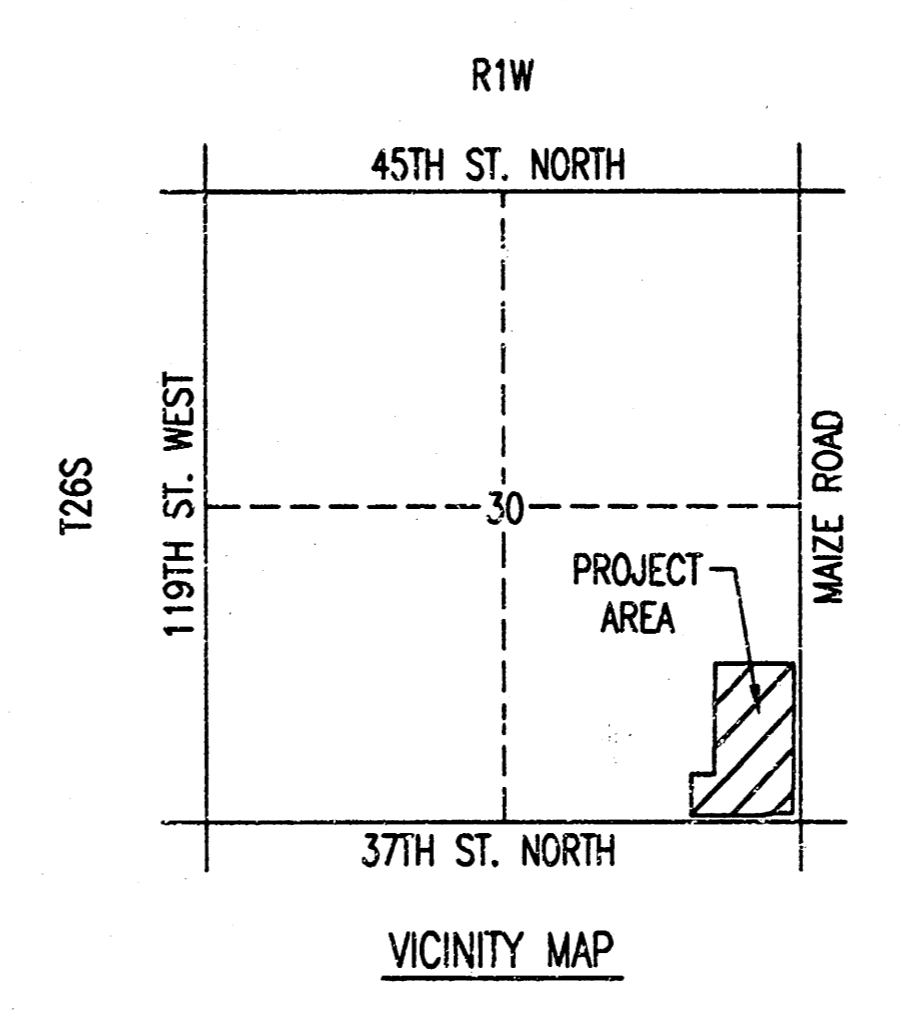


SEE THE PRAIRIE POINTE DRAINAGE PLAN AND SUPPORTING CALCULATIONS FOR HYDROLOGIC CALCULATIONS FOR HAMPTON SQUARE. HAMPTON SQUARE IS REFERRED TO AS FUTURE COMMERCIAL DEVELOPMENT OR DEVELOPED BASIN 5 IN THE PRAIRIE POINTE DRAINAGE REPORT.

SITE SHALL BE GRADED TO DRAIN TO PRAIRIE POINTE RESERVE B VIA APPROVED DRAINAGE CONVEYANCE METHODS.

MINIMUM PAD ELEVATIONS (LOWEST OPENING) SHALL BE AS FOLLOWS:

BLOCK 1	CITY DATUM	N.G.V.D.
LOTS 1,8, and 9	173.1	1360.5
LOTS 2 through 7	171.6	1359.0



Center of Sec. 30, T26S, R1W
Found Stone 30" Deep
Reset 3/4" Pipe w/PEC Cap

E 1/4 Corner, Sec. 30
Twp. 26S, R1W
Found #4 Bar w/ Moehring Cap

N.E. Cor., SE 1/4, SE 1/4
Sec. 30, T26S, R1W
No Monument Found

LOLA TORKELSON
ZONED: SF-20

S.W. Cor. SE1/4 of
Sec. 30, Twp. 26S, R1W
Found 1" Iron Pipe

MARY GRADY REV. TRUST
ZONED: SF-20

MUNIR & BARBARA RAZZAQ
ZONED: SF-20

DANE & JENNIFER WADLEY
ZONED: SF-20

S.E. Corner
Sec. 30, T26S, R1W
Found 1/2" Rebar DENNIS H. GRADY
w/ Moehring Cap ZONED: SF-20