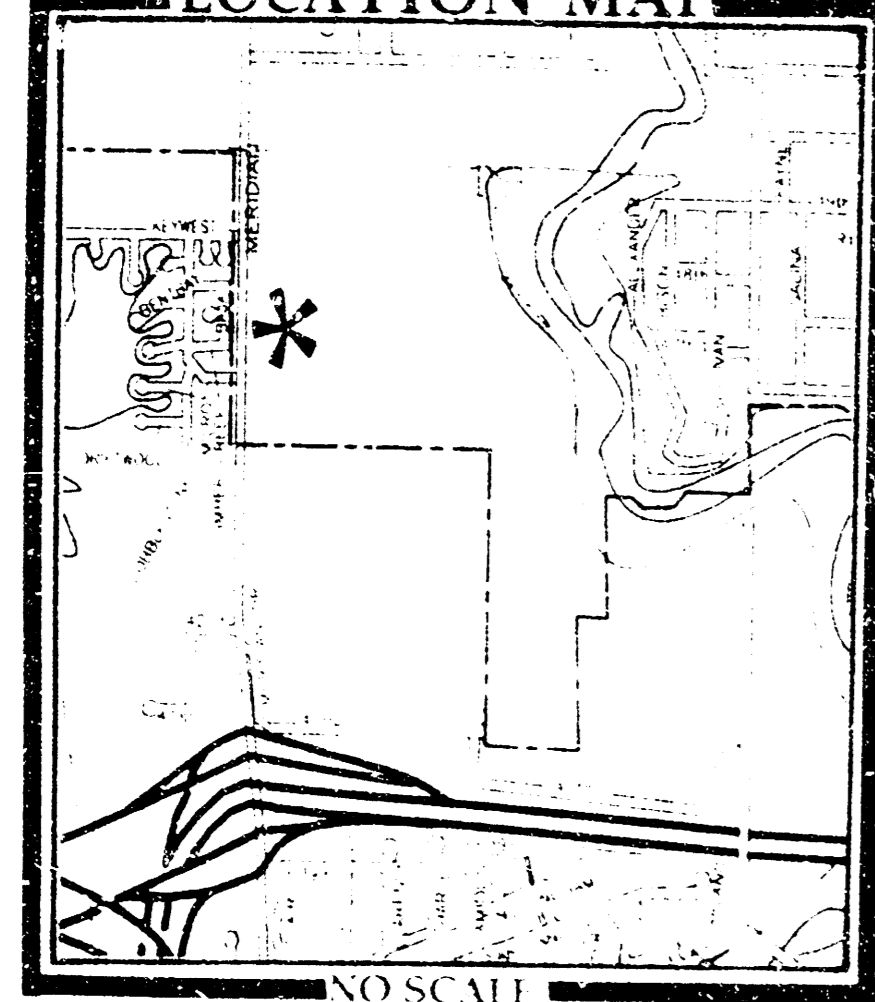


LOCATION MAP



PIPE FLOW AND PIPE SIZE (TYP.)

DA=2.6 AC  
Q<sub>2</sub>=4.9 cfs  
Q<sub>100</sub>=9.6 cfs

DA=2.2 AC  
Q<sub>2</sub>=4.2 cfs  
Q<sub>100</sub>=8.1 cfs

DA=3.6 AC  
Q<sub>2</sub>=6.8 cfs  
Q<sub>100</sub>=13.2 cfs

DA=2.5 AC  
Q<sub>2</sub>=4.8 cfs  
Q<sub>100</sub>=9.2 cfs

DA=5.5 AC  
Q<sub>2</sub>=10.5 cfs  
Q<sub>100</sub>=20.2 cfs

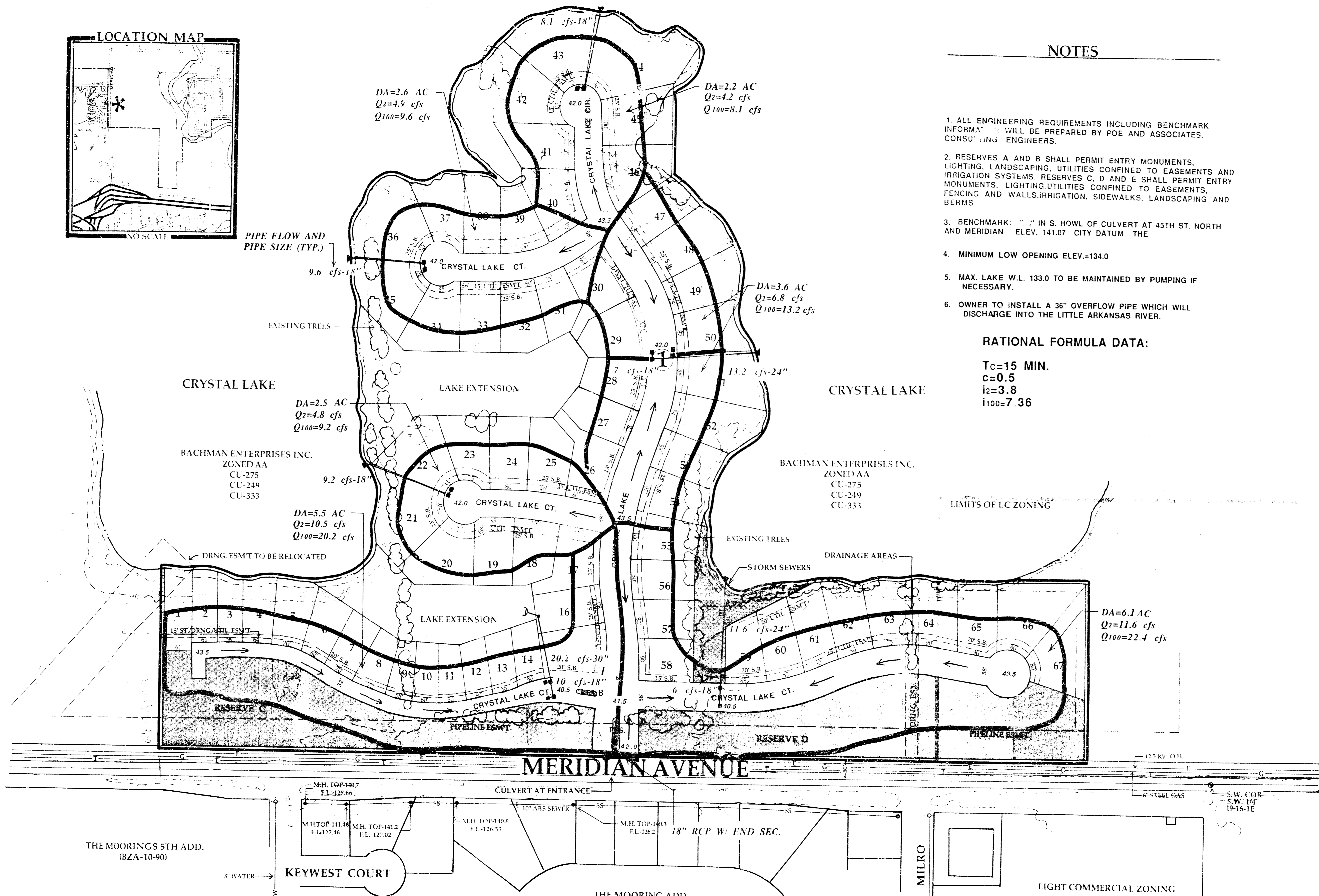
DA=6.1 AC  
Q<sub>2</sub>=11.6 cfs  
Q<sub>100</sub>=22.4 cfs

NOTES

1. ALL ENGINEERING REQUIREMENTS INCLUDING BENCHMARK INFORMATION WILL BE PREPARED BY POE AND ASSOCIATES, CONSULTING ENGINEERS.
2. RESERVES A AND B SHALL PERMIT ENTRY MONUMENTS, LIGHTING, LANDSCAPING, UTILITIES CONFINED TO EASEMENTS AND IRRIGATION SYSTEMS. RESERVES C, D AND E SHALL PERMIT ENTRY MONUMENTS, LIGHTING UTILITIES CONFINED TO EASEMENTS, FENCING AND WALLS, IRRIGATION, SIDEWALKS, LANDSCAPING AND BERMS.
3. BENCHMARK: " " IN S. HOWL OF CULVERT AT 45TH ST. NORTH AND MERIDIAN. ELEV. 141.07 CITY DATUM THE
4. MINIMUM LOW OPENING ELEV.=134.0
5. MAX. LAKE W.L. 133.0 TO BE MAINTAINED BY PUMPING IF NECESSARY.
6. OWNER TO INSTALL A 36" OVERFLOW PIPE WHICH WILL DISCHARGE INTO THE LITTLE ARKANSAS RIVER.

RATIONAL FORMULA DATA:

T<sub>c</sub>=15 MIN.  
c=0.5  
i<sub>2</sub>=3.8  
I<sub>100</sub>=7.36



PRELIMINARY PLAT  
**HARBOR ISLE**

**DRAINAGE PLAN**  
BY POE AND ASSOCIATES OF  
KANSAS, INC. 12-16-93

OWNER: BRAD BACHMAN CONSTRUCTION INC. 4833 PORTWEST CIRCLE, WICHITA, KANSAS 67204 PH. (316) 838-7034 FAX (316) 838-6789

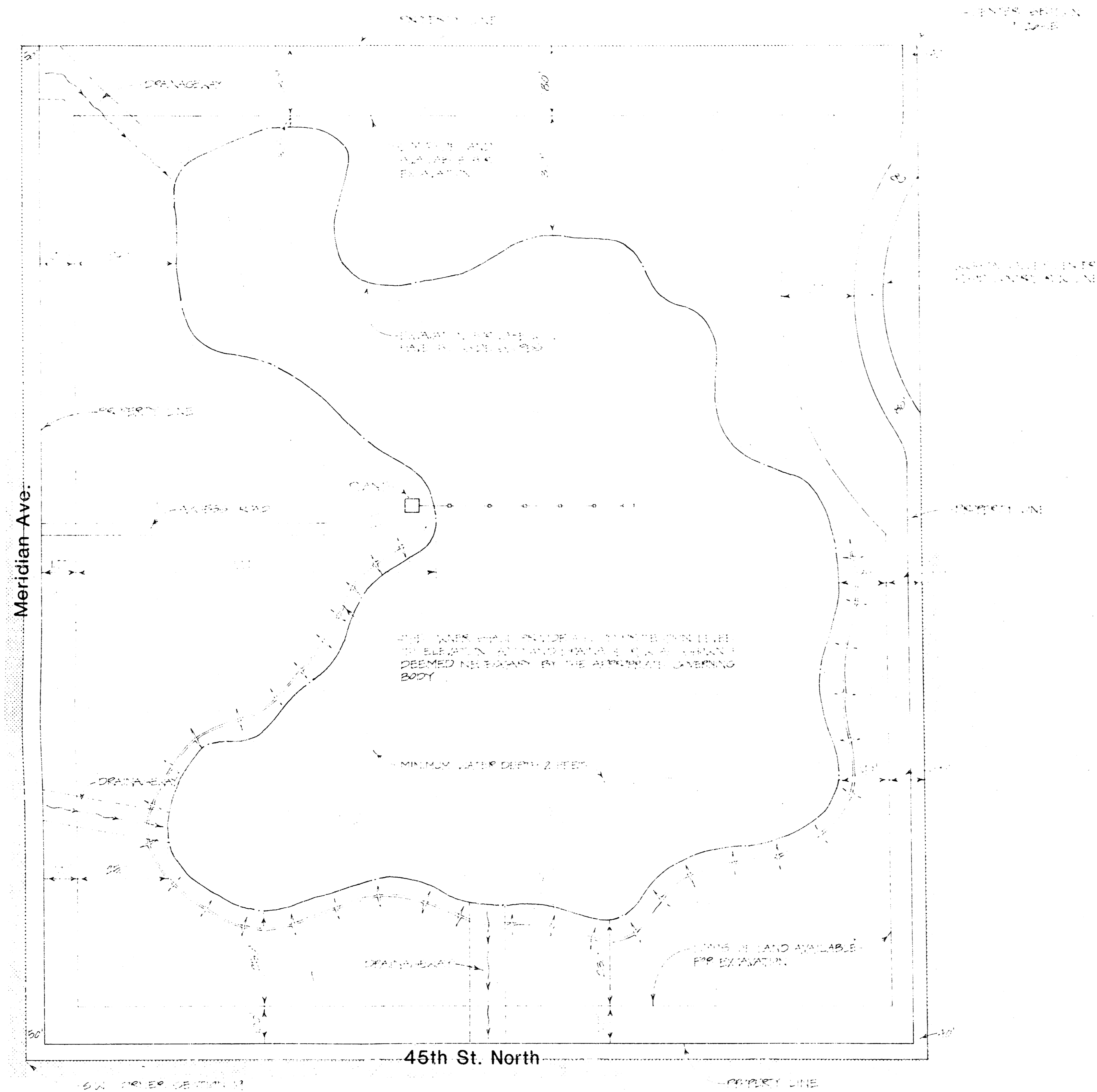


**BILL G. YUNG DESIGN**  
WICHITA, KS 67220  
316-838-5266

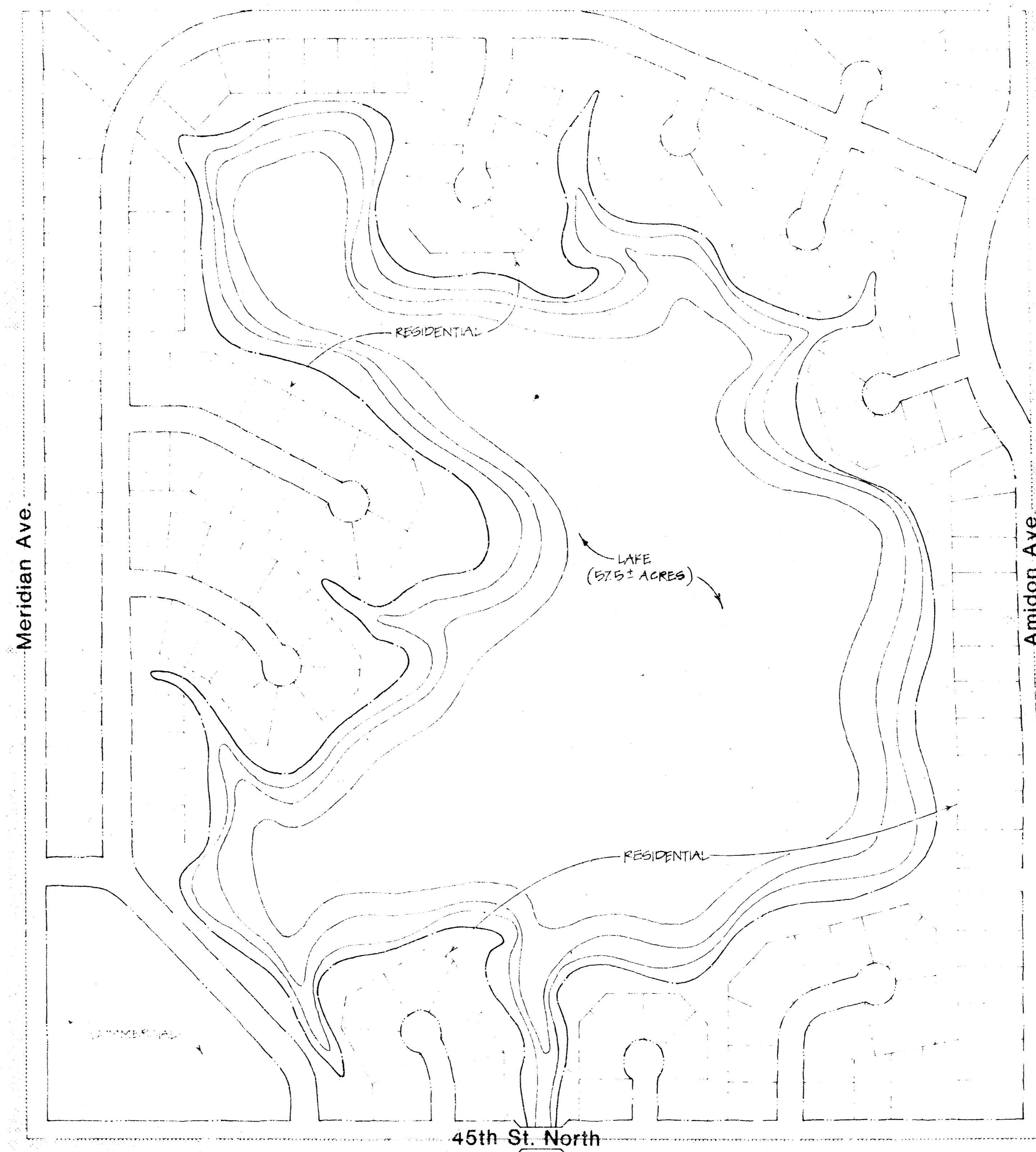
SHEET TITLE PRELIMINARY PLAT DATE 8-13-93 REV.

PROJECT CRYSTAL LAKE

SHEET OF



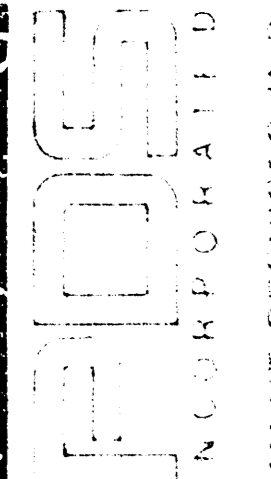
OPERATIONAL PLAN  
(REVISED)



REDEVELOPMENT PLAN  
(REVISED)

# MILES SAND, INC.



  
 INCORPORATED  
 PLANNING DEVELOPMENT SERVICES, INC.  
 11111 Meridian Ave., Suite 100, Dallas, Texas 75243  
 Phone: (214) 343-1111  
 Fax: (214) 343-1112  
 E-mail: info@pdsinc.com

**MILES SAND, INC.**

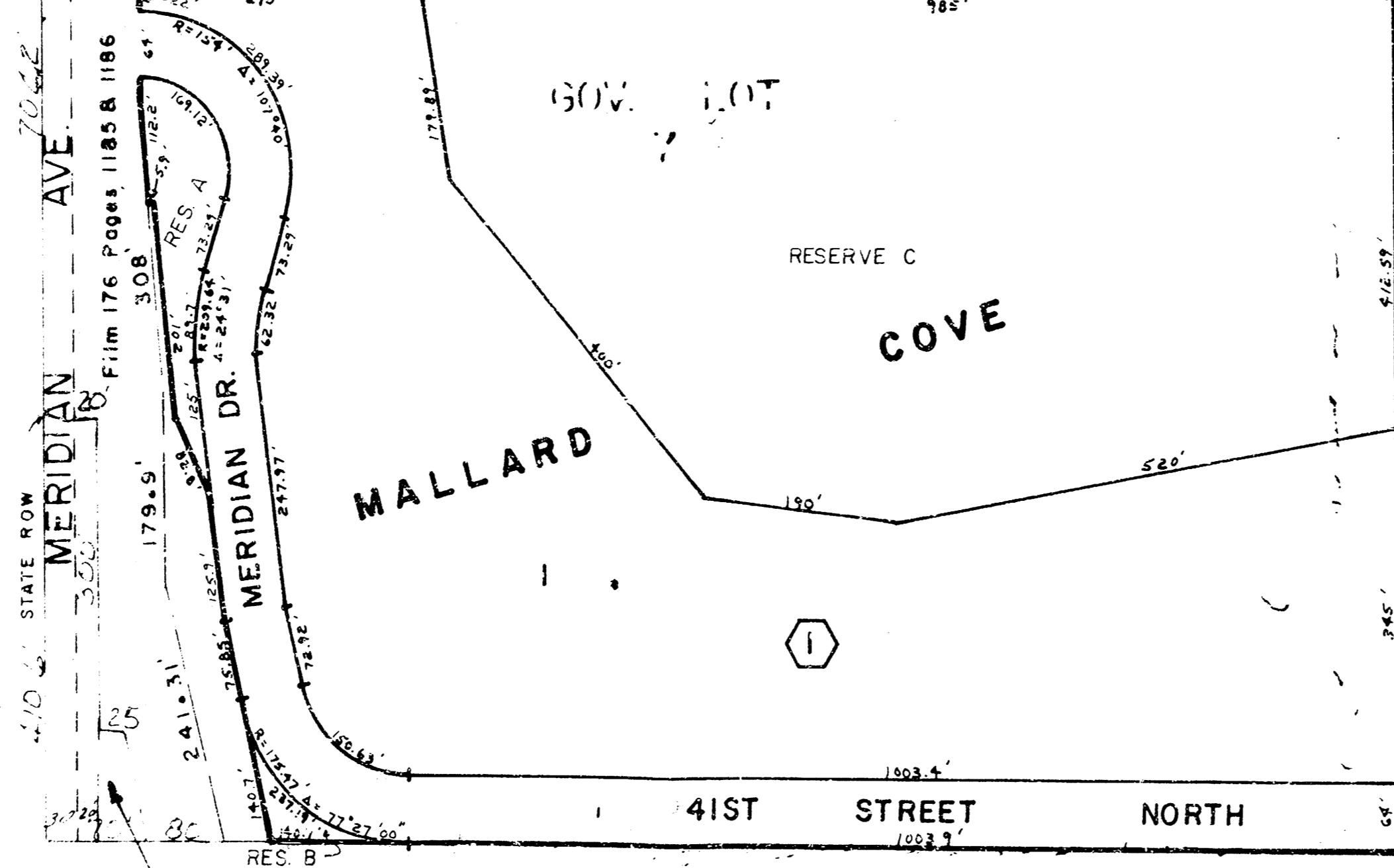
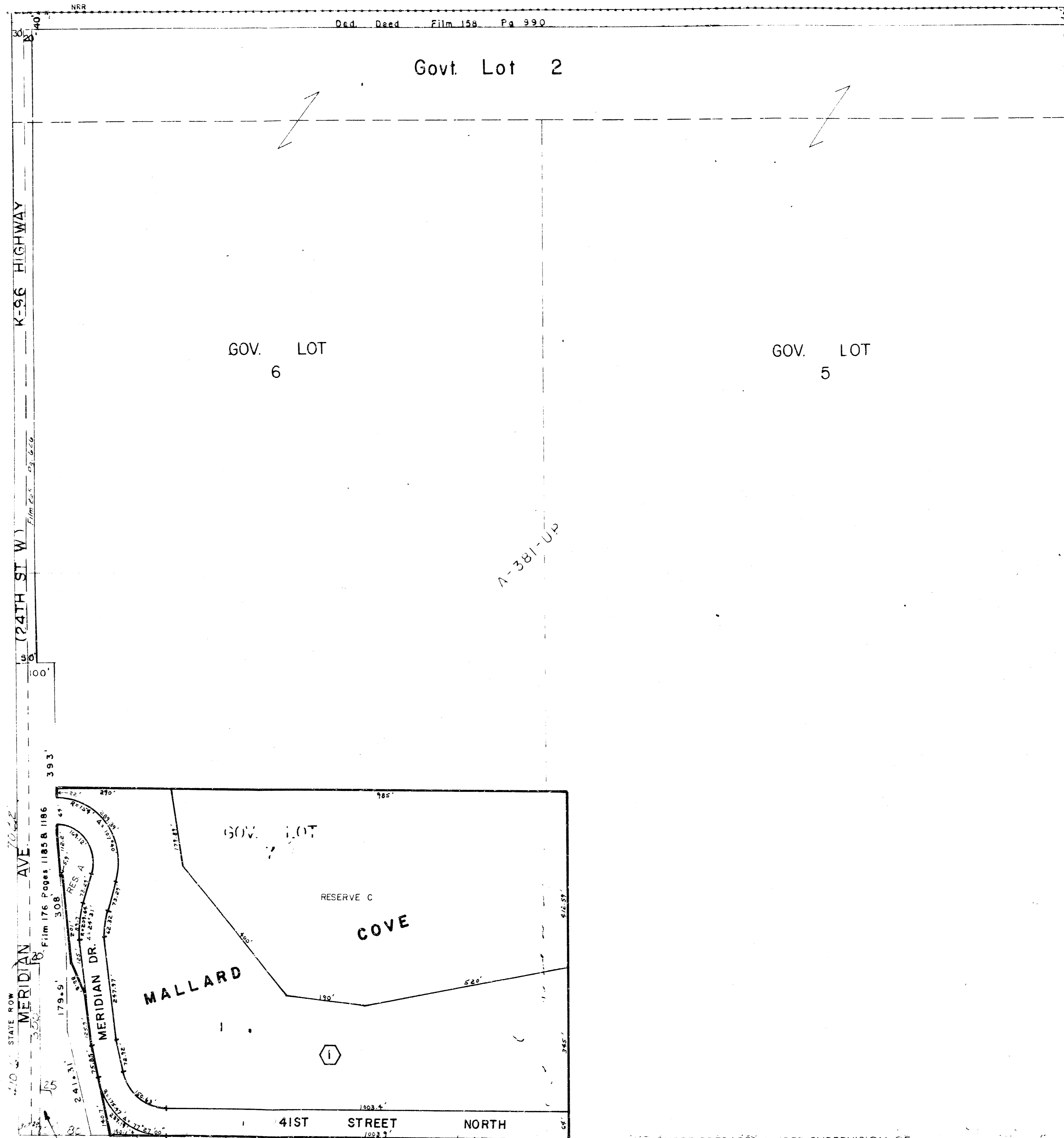
DRAWN: [ ]  
 CHECKED: [ ]  
 REVISED: [ ]

SHEET  
**1**  
 OF

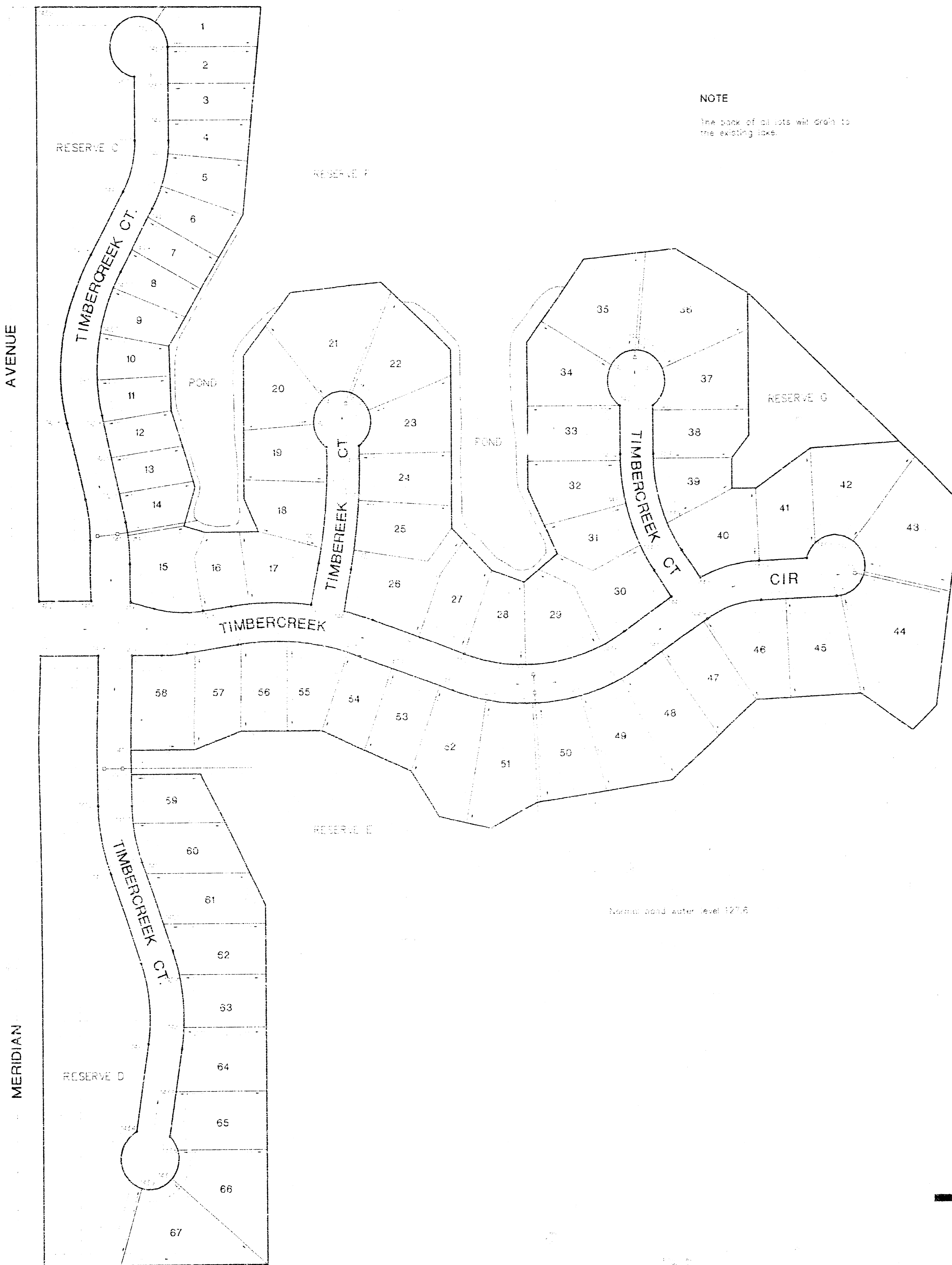
8 - 19

KE  
118

N.W. ¼ SEC. 30 TWP. 26S. R. 1 E.



THIS SHEET PREPARED UNDER SUPERVISION OF  
DOROTHY K. WHITE, SEDGWICK COUNTY CLERK



**NOTE**  
The back of all lots will drain to the existing lake.

Scale 1" = 100'

**NOTE**  
The minimum low opening elevation for homes built in this addition shall be 124.0 (City of Wichita Datum) 1221.4 (MSL)  
The minimum basement floor elevation for homes built in this addition shall be 131.0 (City of Wichita Datum) 129.4 (MSL)

**BENCHMARKS**  
1. "BM" set on southwest corner of north meadow at Meridian Avenue and Mikro.  
Elev. 139.85 (City of Wichita Datum)

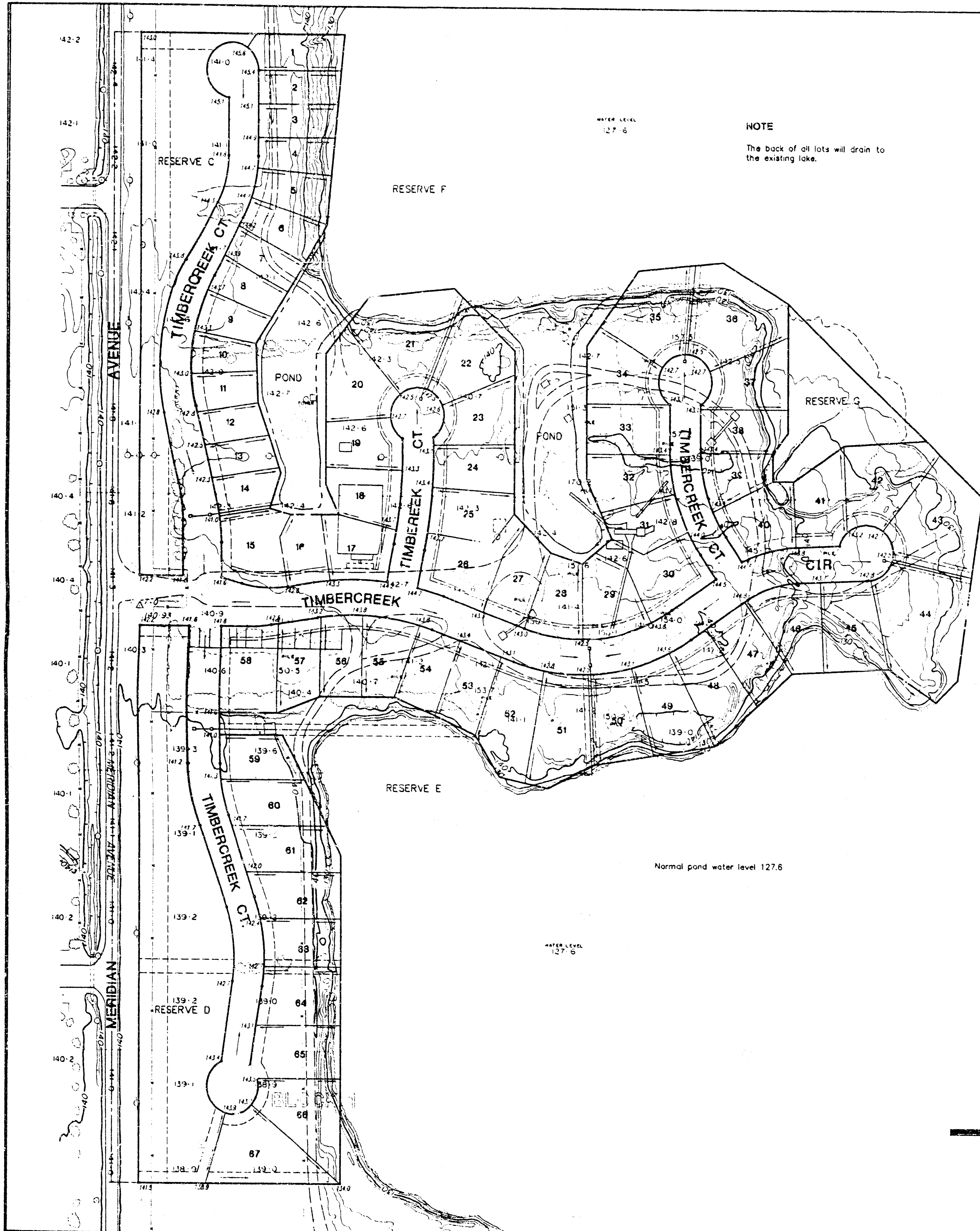
Normal high water level 127.6

**APPROVED  
DRAINAGE PLAN**

**LOT GRADING PLAN**  
**HARBOR ISLE ADDITION**

**TO WICHITA - SEDGWICK COUNTY, KANSAS**

July 26, 1994



**NOTE**  
 The back of all lots will drain to the existing lake.



Scale 1" = 100'

**NOTE**  
 The minimum low opening elevation for homes built in this addition shall be 134.0 (City of Wichita Datum) 1321.4 (MSL)  
 The minimum basement floor elevation for homes built in this addition shall be 131.0 (City of Wichita Datum) 1318.4 (MSL)

**BENCHMARKS**  
 1. "□" cut on southwest corner of north headwall at Meridian Avenue and Mikro. Elev. 139.85 (City of Wichita Datum)

Normal pond water level 127.6

**LOT GRADING PLAN**

**HARBOR ISLE ADDITION**

**TO WICHITA - SEDGWICK COUNTY, KANSAS**

July 26, 1994