

SKETCH PLAT

HARP'S ADDITION

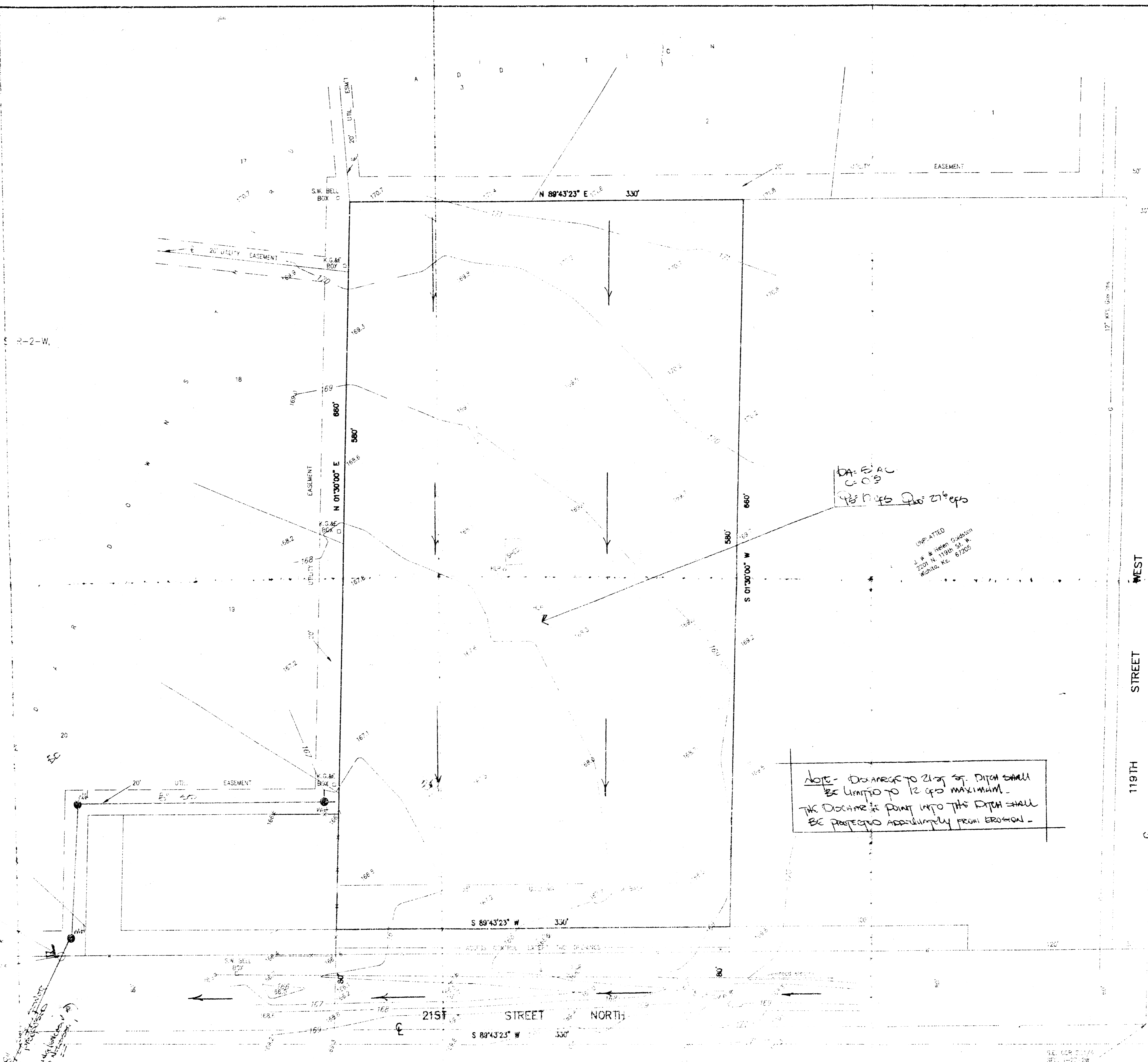
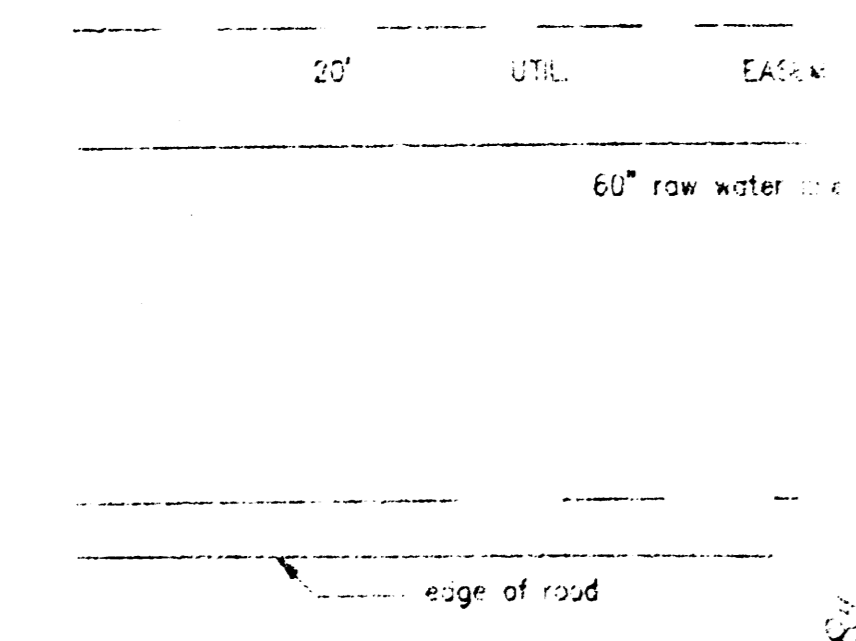
A TRACT OF LAND IN THE S.E. 1/4 OF SEC. 1, TWP. 2 R-2-W, OF THE 6TH P.M., SEDGWICK COUNTY, KANSAS.

OWNERS: LLOYD L. AND KAREN L. HARP



BENCH MARK:
CITY STANDARD DISC, 67 FEET
SOUTH AND 46 FEET EAST
OF CENTERLINES OF 21ST ST. &
119TH ST. WEST.
ELEV. = 772.08 CITY DATUM

Basement note?
Some of the
sanitary sewer
lines in
basement
= 15" dia



DA: P. A. C.
C. O. B.
P. H. S. P. 21st Exp.

UNPLATTED
J. & M. FROM GARDNER
2201 N. 19TH ST. N.
EDW. CO. KS. 67226

NOTE - DRAINAGE TO 21st ST. DITCH SHALL
BE LIMITED TO 12 CFS MAXIMUM.
THE DRAINAGE POINT INTO THE DITCH SHALL
BE PROTECTED AGAINST EROSION.

Basement note?
P.S.L. 21st St. No

**SANITARY SEWER PLAN &
DRAINAGE PLAN**

BAGGEMAN COMPANY
SURVEYORS & ENGINEERS
1101 N. 10TH ST. WICHITA, KS. 67202