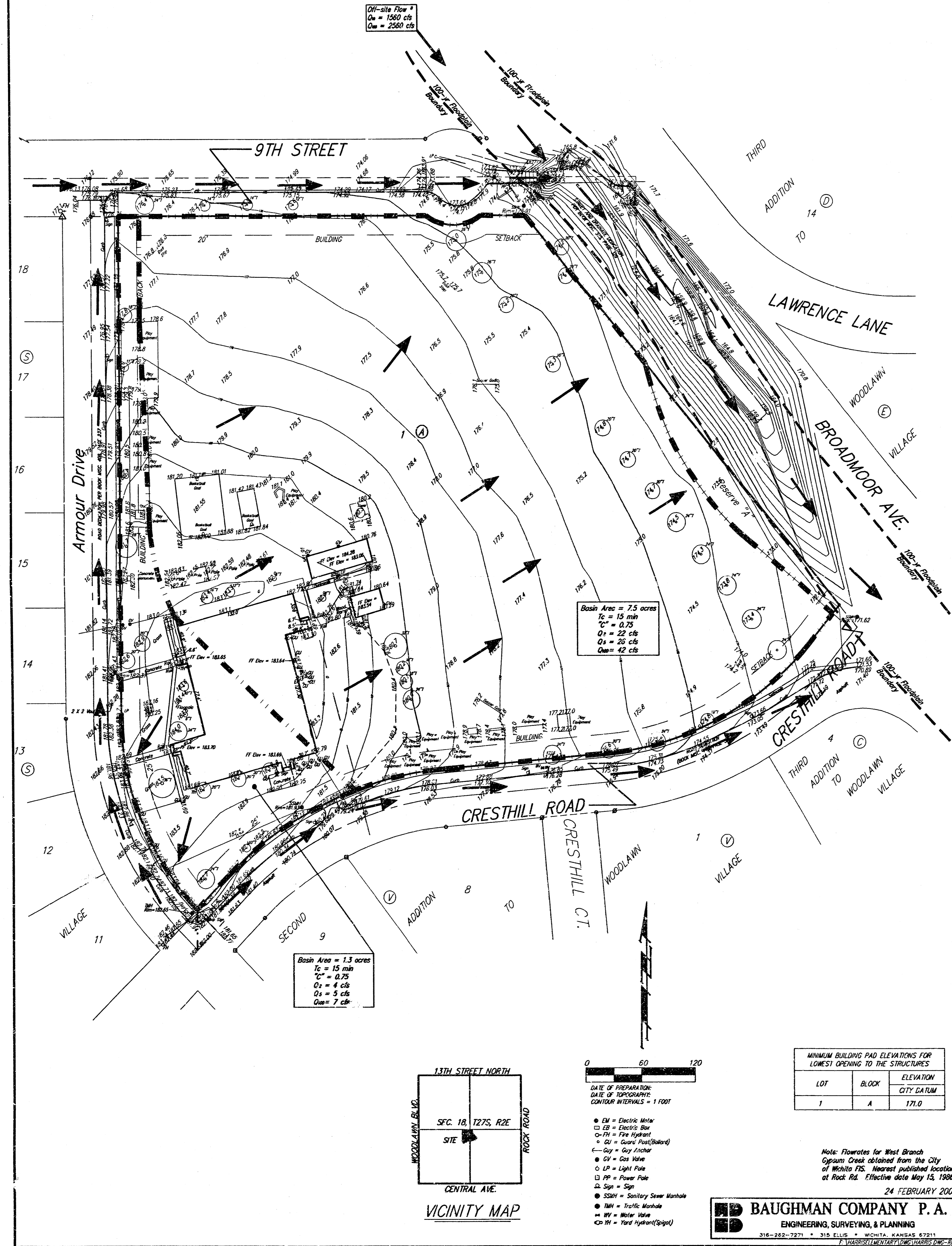


# DRAINAGE PLAN HARRIS ELEMENTARY ADDITION WICHITA, SEDGWICK COUNTY, KANSAS



MINIMUM BUILDING PAD ELEVATIONS FOR LOWEST OPENING TO THE STRUCTURES

LOT	BLOCK	ELEVATION
1	A	171.0

- DATE OF PREPARATION:  
DATE OF TOPOGRAPHY:  
CONTOUR INTERVALS = 1 FOOT
- EM = Electric Meter
  - EB = Electric Box
  - FH = Fire Hydrant
  - GI = Gas Inlet (Balancing)
  - GY = Gas Yricker
  - GV = Gas Valve
  - LP = Light Pole
  - PP = Power Pole
  - △ Sps = Sign
  - SSM = Sanitary Sewer Manhole
  - TM = Traffic Manhole
  - WM = Water Manhole
  - WH = Water Hydrant (Spigot)

Note: Flowrates for West Branch Ogypum Creek obtained from the City of Wichita FIS. Nearest published location at Rock Rd. Effective date May 15, 1998.

24 FEBRUARY 2003

**B** BAUGHMAN COMPANY P. A.  
ENGINEERING, SURVEYING, & PLANNING  
316-282-7271 • 315 ELLIS • WICHITA, KANSAS 67211