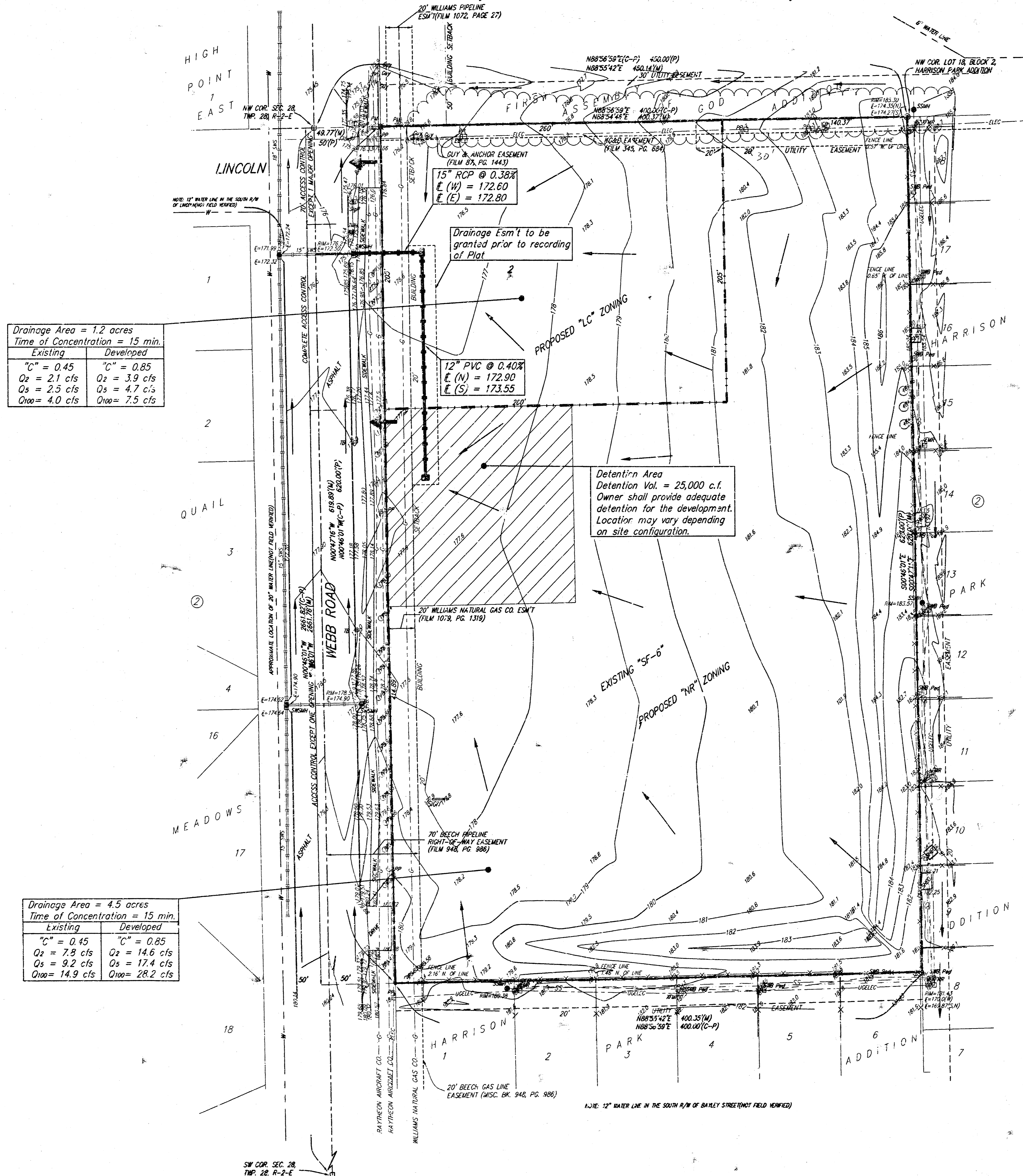


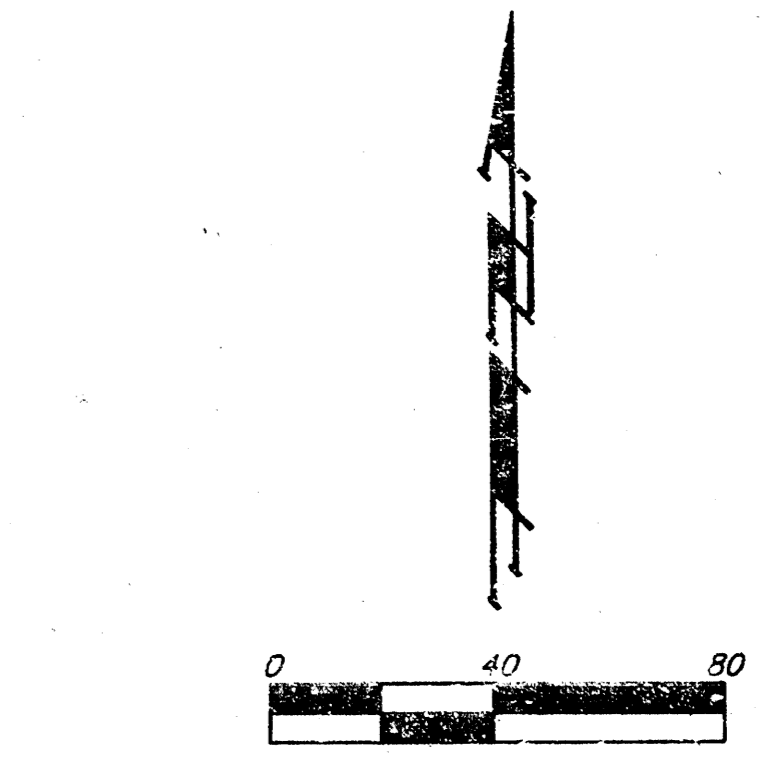
DRAINAGE PLAN HARRISON PARK 3RD ADDITION WICHITA, SEDGWICK COUNTY, KANSAS



Drainage Area = 1.2 acres	
Time of Concentration = 15 min.	
Existing	Developed
"C" = 0.45	"C" = 0.85
Q ₂ = 2.1 cfs	Q ₂ = 3.9 cfs
Q ₅ = 2.5 cfs	Q ₅ = 4.7 cfs
Q ₁₀₀ = 4.0 cfs	Q ₁₀₀ = 7.5 cfs

Drainage Area = 4.5 acres	
Time of Concentration = 15 min.	
Existing	Developed
"C" = 0.45	"C" = 0.85
Q ₂ = 7.8 cfs	Q ₂ = 14.6 cfs
Q ₅ = 9.2 cfs	Q ₅ = 17.4 cfs
Q ₁₀₀ = 14.9 cfs	Q ₁₀₀ = 28.2 cfs

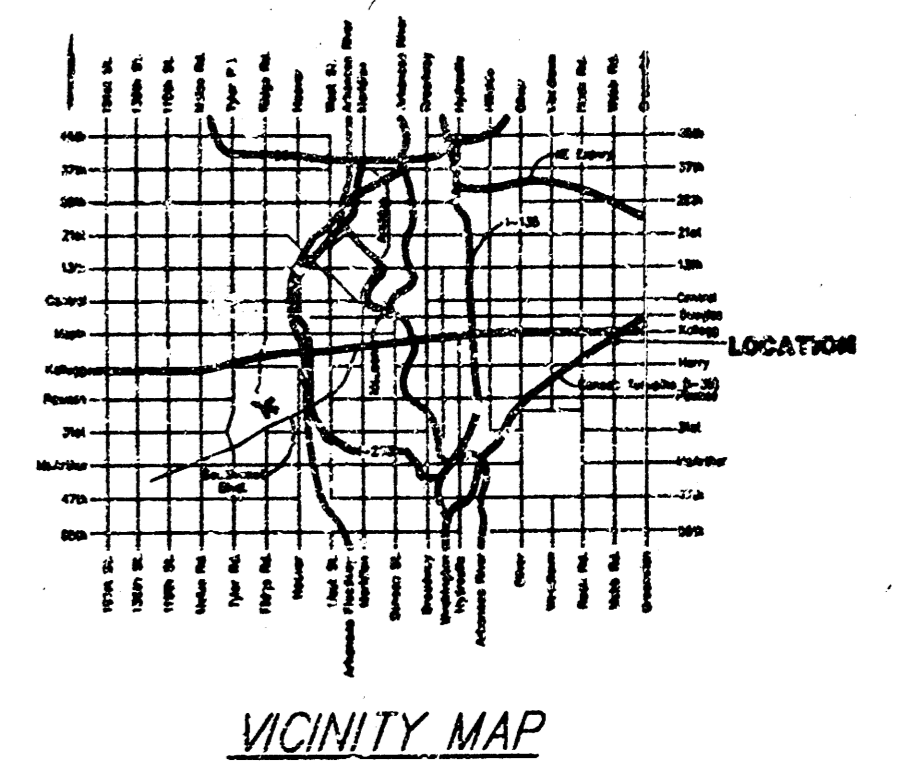
Detention Area
Detention Vol. = 25,000 c.f.
Owner shall provide adequate
detention for the development.
Locator may vary depending
on site configuration.



- = General Flow Direction
- ← = Major Event Flow
- - - = Drainage Basin Boundary
- CP ○ = Cable TV Pedestal
- EB □ = Electric Box
- GA — = Guy Anchor
- PM ⊥ = Pipeline Marker
- PP □ = Power Pole
- SP ⊥ = Signal Pole
- Sign ⊥ = Sign
- SSMH ⊙ = Sanitary Sewer Manhole
- SSMH ⊙ = Southwestern Bell Pedestal
- SSSW ⊙ = Stormwater Sewer Manhole
- T ○ = Tree
- TB ⊥ = Traffic Box
- TM ⊙ = Traffic Manhole
- TRM ⊥ = Transformer

- ⊙ = #4 REBAR W/ "BAUGHMAN" CAP (SET)
- ⊙ = #4 REBAR (FOUND)
- = 1/2" IRON (FOUND)
- = TIMBER (FOUND)
- (M) = MEASURED
- (D) = DESCRIBED
- (P) = PLATTED
- (C) = CALCULATED
- (C-P) = CALCULATED PER PLATTED INFO
- (C-D) = CALCULATED PER DEED INFO

BENCHMARK
C.O.B. BENCHMARK SW COR. OF INTERSECTION NW CITY
TRAFFIC SIGNAL LIGHT POLE BASE.
ELEV. = 176.51 CITY DATUM



NOTE: The proposed drainage plan provided herein is a generally defined plan to follow for design. It is recognized and assumed that upon the final design of buildings, parking lots, and storm sewer improvements within this plat that the designer will modify or alter the general drainage plan as necessary in order to implement the installation of the improvements to obtain the most economical design and construction possible.

Revised 03 November 1999
20 OCTOBER 1999