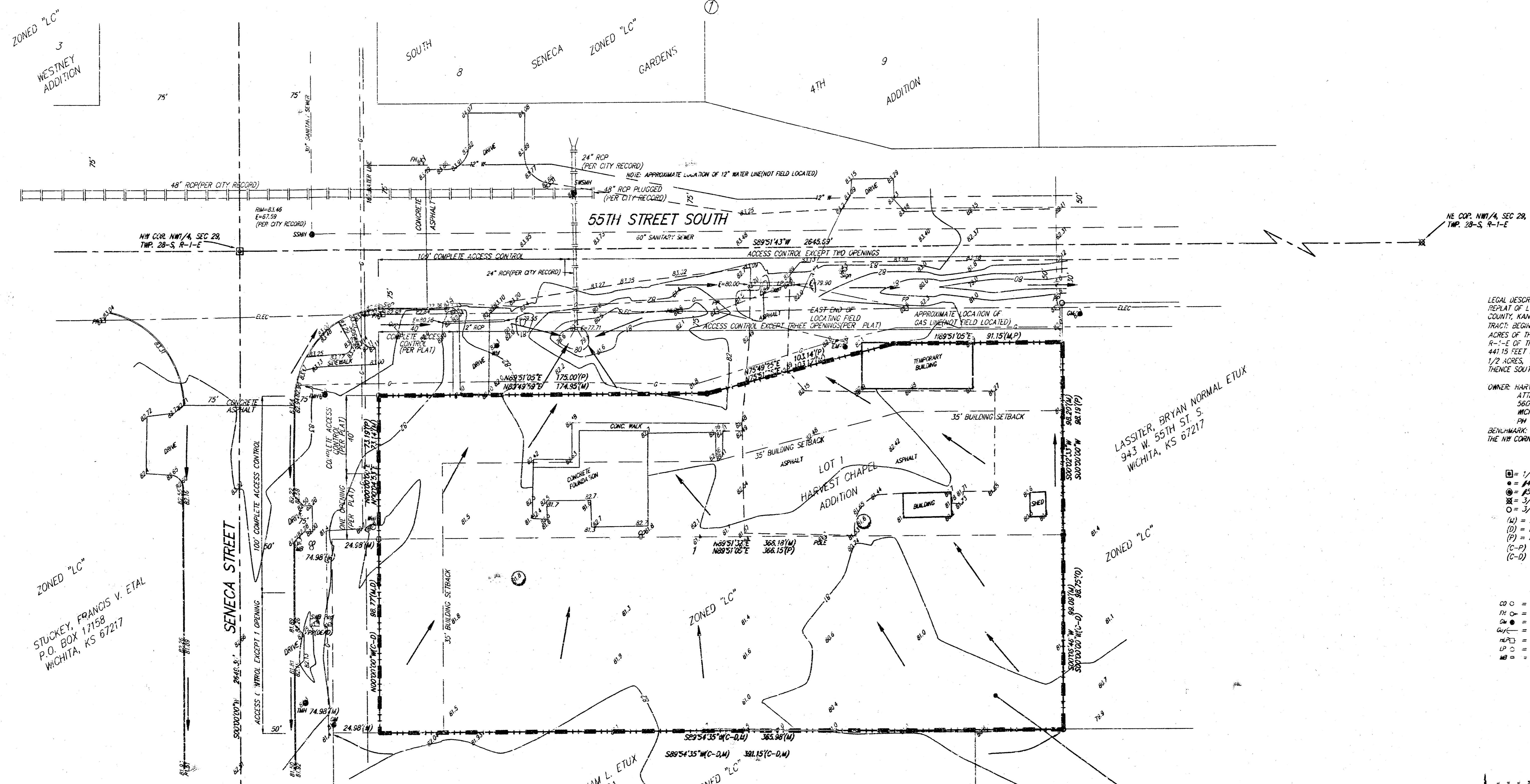
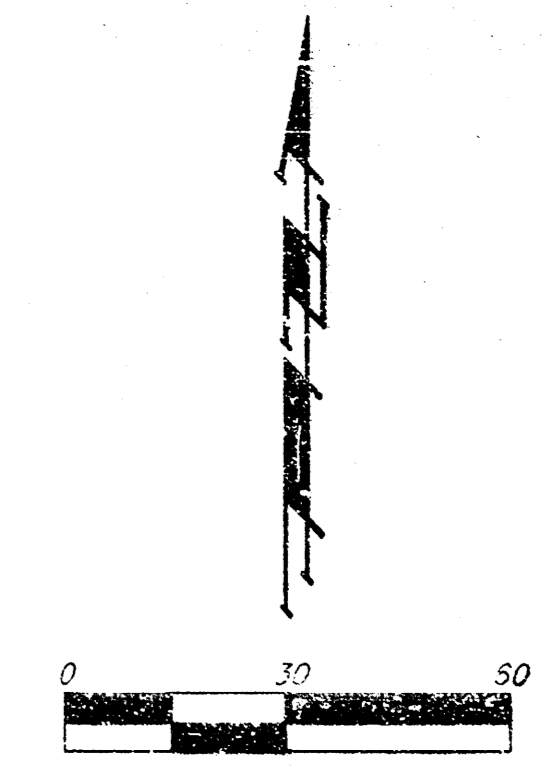


DRAINAGE PLAN

HARVEST CHAPEL 2ND ADDITION

WICHITA, SEDGWICK COUNTY, KANSAS



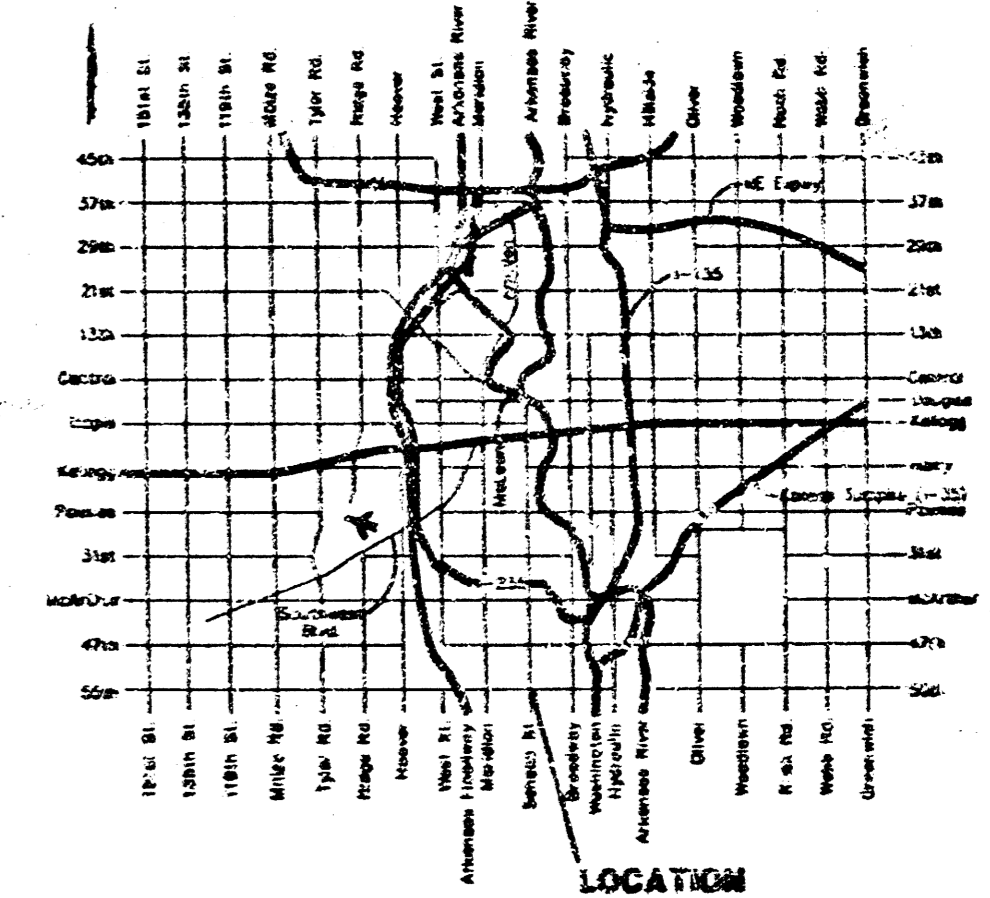
LEGAL DESCRIPTION:
 REPLAT OF LOT 1, HARVEST CHAPEL ADDITION, WICHITA, SEDGWICK COUNTY, KANSAS, TOGETHER WITH THE FOLLOWING DESCRIBED TRACTS: BEGINNING AT THE SW CORNER OF THE NORTH 7 1/2 ACRES OF THE NW 1/4 OF THE NW 1/4 OF SEC. 28, TWP. 28-S, R-1-E OF THE 6TH P.M., SEDGWICK COUNTY, KANSAS; THENCE EAST 441.15 FEET PARALLEL WITH THE SOUTH LINE OF THE FORESAID 7 1/2 ACRES; THENCE NORTH 88.75 FEET; THENCE WEST 441.15 FEET; THENCE SOUTH 56.75 FEET TO THE POINT OF BEGINNING.

OWNER: HARVEST CHAPEL CHURCH, INC.
 ATTN: STEVE FISHER
 5600 S. SENECA
 WICHITA, KANSAS 67217
 PH (316)

BENCHMARK: CONW BENCH LOCATED 66' WEST & 45.4' NORTH OF THE NW CORNER OF 55TH & SENECA

- = 1/2" IRON IN THIMBLE (FOUND)
 - = #4 REBAR W/ "BAUGHMAN" CAP (SET)
 - ⊗ = #5 REBAR(FOUND)
 - ⊗ = 3/4" IRON IN THIMBLE (FOUND)
 - = 1/4" IRON (FOUND)
 - (M) = MEASURED
 - (D) = DESCRIBED
 - (P) = PLATED
 - (C-P) = CALCULATED PER PLATED INFO.
 - (C-D) = CALCULATED PER DESCRIBED INFO.
- CS ○ = Cleanout
 - PH ○ = Fire Hydrant
 - CM ● = Gas Meter
 - AW ● = Air Ariser
 - MS ● = Manhole
 - LP ○ = Light Pole
 - MB ○ = Mail Box
 - SP □ = Power Pole
 - SP ○ = Signal Pole
 - SN △ = Sign
 - SM ● = Sanitary Sewer Manhole
 - SMB Pw. ● = Southwestern Bell Poles/duct
 - SSWM ● = Stormwater Sewer Manhole
 - TM ● = Traffic Manhole
 - MO ○ = Cased Well

| Existing Conditions | Developed Conditions |
|-----------------------------|-----------------------------|
| D.A. = 1.23 ac | D.A. = 0.93 ac |
| D.A. = 0.30 ac (impervious) | D.A. = 0.60 ac (impervious) |
| Tc = 15 min. | Tc = 15 min. |
| "C" = 0.50 | "C" = 0.60 |
| Q _s = 2.93 cfs | Q _s = 3.52 cfs |
| Q _t = 3.49 cfs | Q _t = 4.19 cfs |
| Q _{sw} = 5.64 cfs | Q _{sw} = 6.77 cfs |



ZONED "LC"
 WESTNEY ADDITION

ZONED "LC"
 STUCKEY, FRANCIS V. ETAL
 P.O. BOX 17158
 WICHITA, KS 67217

HESS, WILLIAM L. ETUX
 5630 S. SENECA
 WICHITA, KS 67217

LOT 1 RAINBOW ESTATES ADDITION

SW COR. NW 1/4, SEC. 28,
 TWP. 28-S, R-1-E

20 DECEMBER 1999