

DRAINAGE PLAN

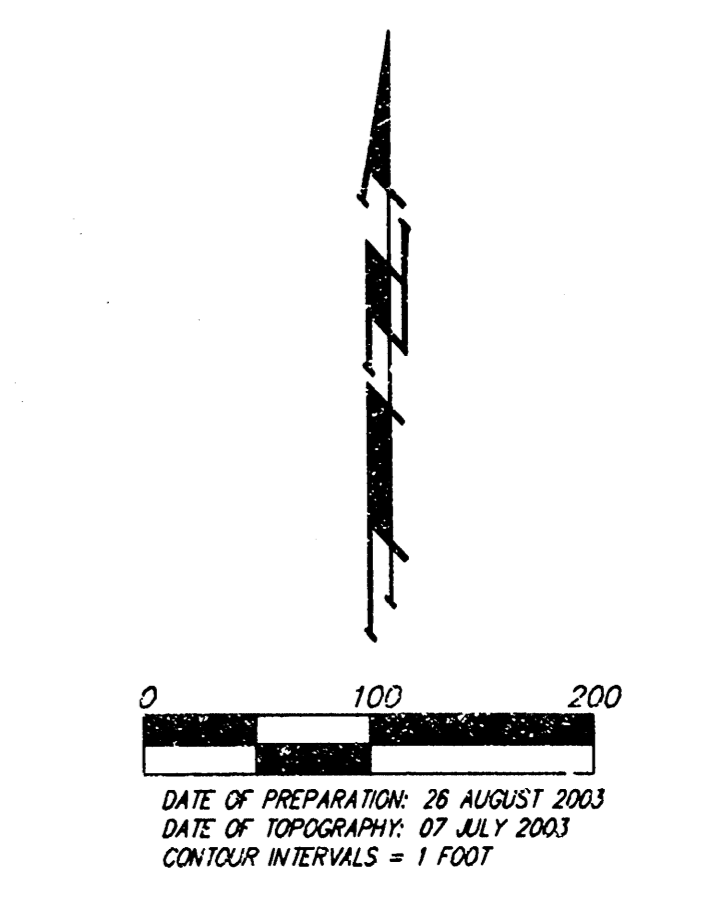
HARVEST RIDGE COMMERCIAL ADDITION

WICHITA, SEDGWICK COUNTY, KANSAS

LAMP FARMS LLC
 2605 S. LAMP 1421
 LIEUNETT WICHITA, KS
 67203 ZONED
 SF-20

NE COR. SE 1/4, SEC. 7,
 TWP. 20 S. R-1-W
 HE COR. LOT 1, BLOCK 2,
 DUGAN INDUSTRIAL THRD ADD.

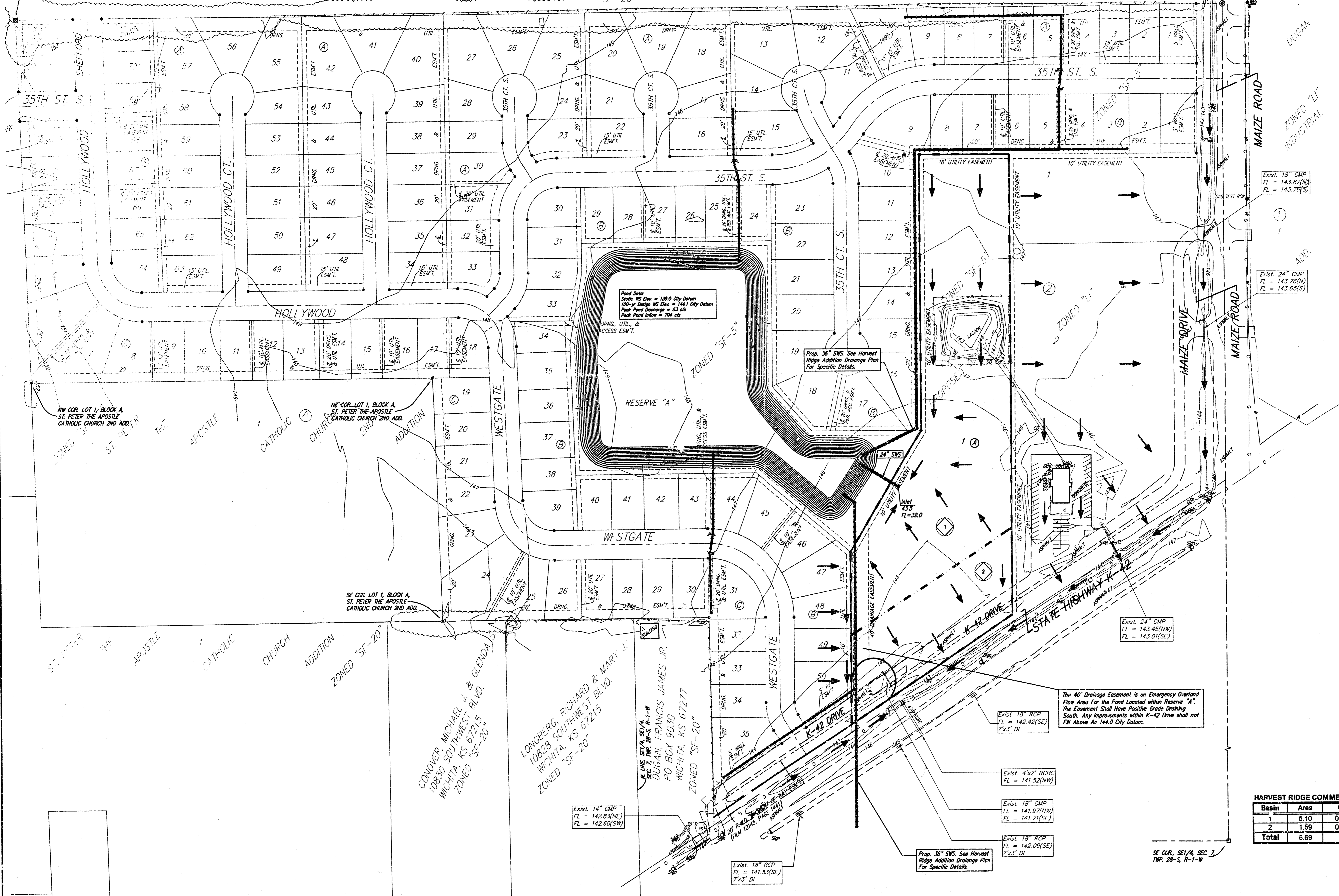
NW COR. SE 1/4, SEC. 7,
 TWP. 20 S. R-1-W



BENCHMARK:
 Railroad spike 1st power pole west of N1/4 Cor.
 Sec. 7, Twp. 20-S, R-1-W of the 6th P.M.
 Elev. = 134.43 (City Datum)
 Elev. = 1341.83 (NGVD29)

Railroad spike 3rd power pole west of N1/4 Cor.
 Sec. 7, Twp. 20-S, R-1-W of the 6th P.M.
 Elev. = 136.99 (City Datum)
 Elev. = 1344.39 (NGVD29)

MINIMUM BUILDING PAD ELEVATIONS FOR LOWEST OPENING TO THE STRUCTURES			
LOT	BLOCK	ELEVATION	
		CITY DATUM	NGVD29
1	A	145.1	1332.5



HARVEST RIDGE COMMERCIAL ADDITION - Rational Method - Q = cfs - tc = 15 min

Basin	Area	C ₁	C ₂	C ₁₀₀	Q ₂ (cfs)	Q ₅ (cfs)	Q ₁₀₀ (cfs)
1	5.10	0.84	0.85	0.91	16.4	13.8	34.2
2	1.59	0.84	0.85	0.91	5.1	6.2	10.7
Total	6.69	-	-	-	21.5	25.9	44.9

BAUGHMAN COMPANY P. A.
 ENGINEERING, SURVEYING & PLANNING
 318-262-7271 • 315 ELLIS • WICHITA, KANSAS 67211
 7-18-210203-PLS-BROOKWOOD-1000-1000-0000