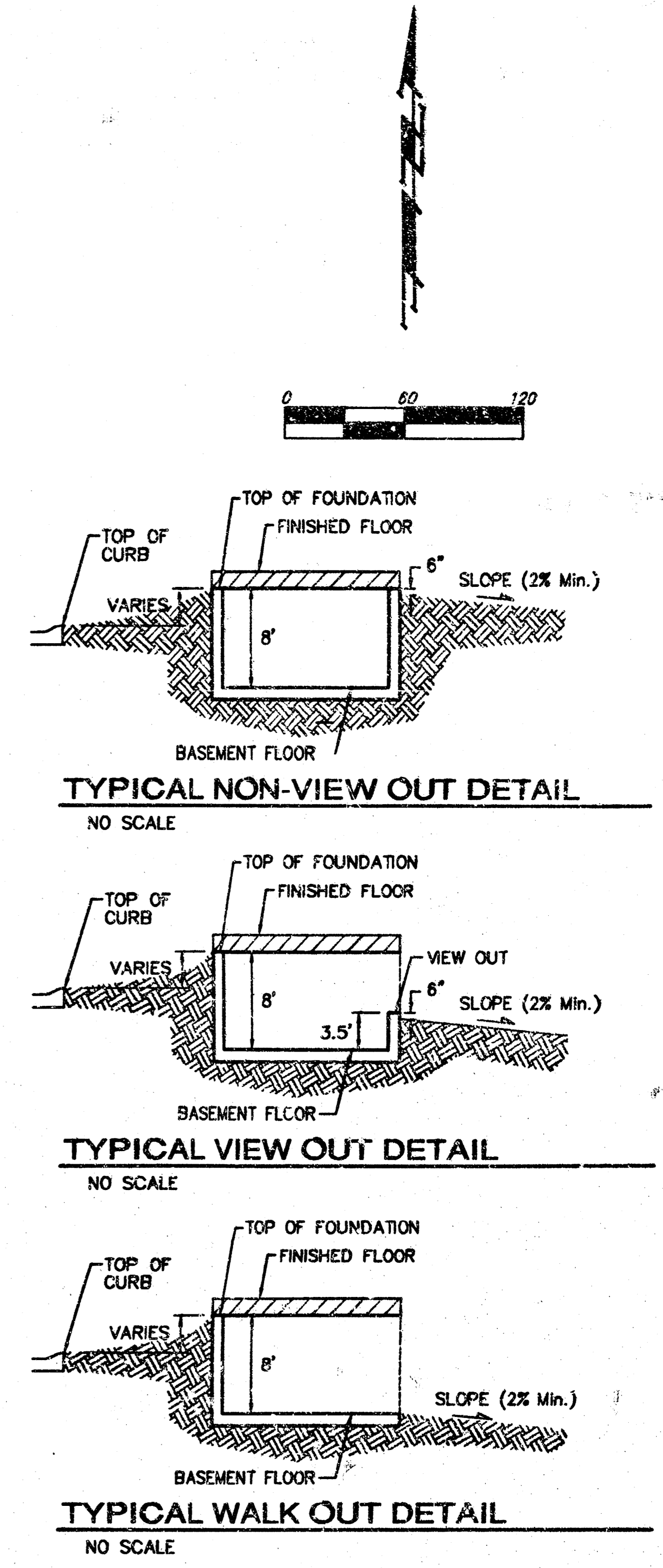


GRADING PLAN  
 DATE: OCTOBER 13, 2004  
 PHASE 1 ONLY  
 Lots 1-31, Block A  
 Lots 1-30, Block B



**NOTES:**  
 Proposed Top of Foundation Elevations Are Shown On Plans. Contractor to Set Finished Floor Elevations.  
 All Street Elevations Shown on Plans Are for Top of Curb (Full-Height).  
 This Grading Plan is Designed with View-Outs. Elevations Shown at Rear of House (XX.X V.O.)  
 Lot dimensions have been omitted on this plan, refer to the recorded plat for this information.  
 \* May Require Extra Deep Foundation

APPROVED  
 DRAINAGE PLAN

MINIMUM BUILDING PAD ELEVATIONS FOR LOWEST OPENING TO THE STRUCTURES

LOT	BLOCK	ELEVATION:	
		CITY DATUM	NCHD29
16-22	B	144.5	1331.9
24-30	B	144.5	1331.9
40-47	B	144.5	1331.9

**BENCHMARK:**  
 BM #1: Small RR spike in 2nd PP north of K-42 Highway, west side of Maize  
 Elev. = 143.61 (City Datum)  
 BM #2: Small RR spike in PP east of East 1/4 Corner (G)  
 Elev. = 147.00 (City Datum)  
 BM #3: "X" Top Headwall southeast corner K-42 Highway and Maize (County BM with City Datum)  
 Elev. = 144.04 (City Datum)

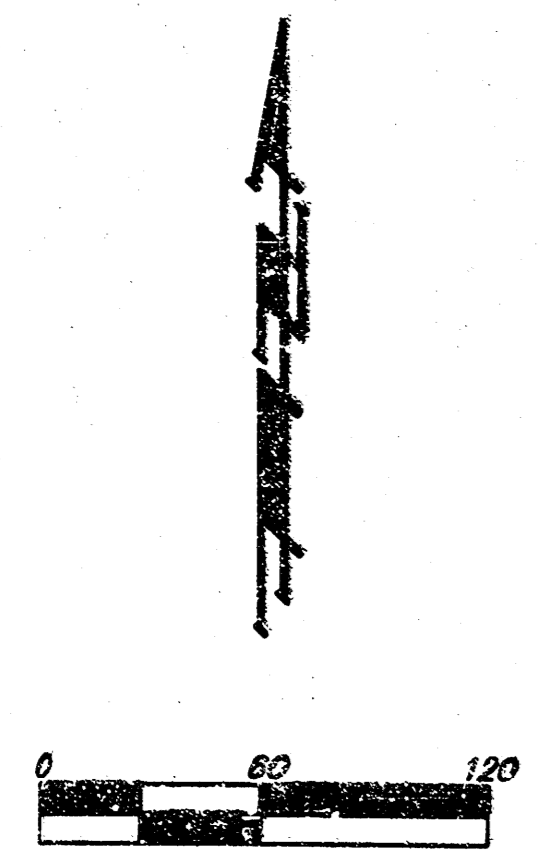
Revised 10-13-2004

**HARVEST RIDGE ADDITION**  
**GRADING PLAN**  
 WICHITA, SEDGWICK COUNTY, KANSAS

**BAUGHMAN COMPANY P.A.**  
 ENGINEERING, SURVEYING, & PLANNING  
 318-282-7271 • 318-2418 • WICHITA, KANSAS 67211

PROJECT NUMBER: \_\_\_\_\_ SHEET: 1 OF 8

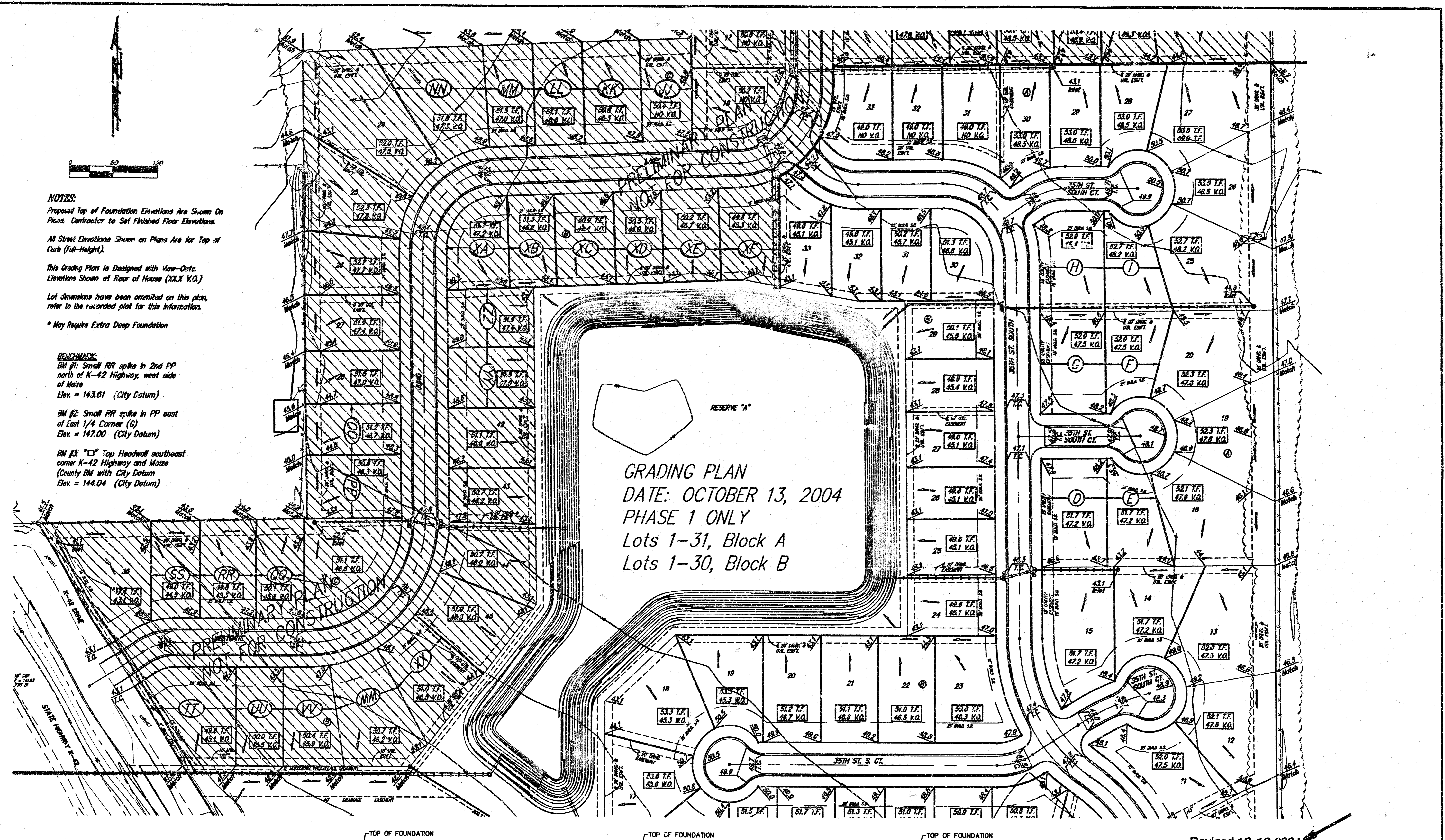
DESIGN: BLG DRAWN: MWS APPROVED: \_\_\_\_\_ DATE: 03/22/04 SCALE: 1"=60'



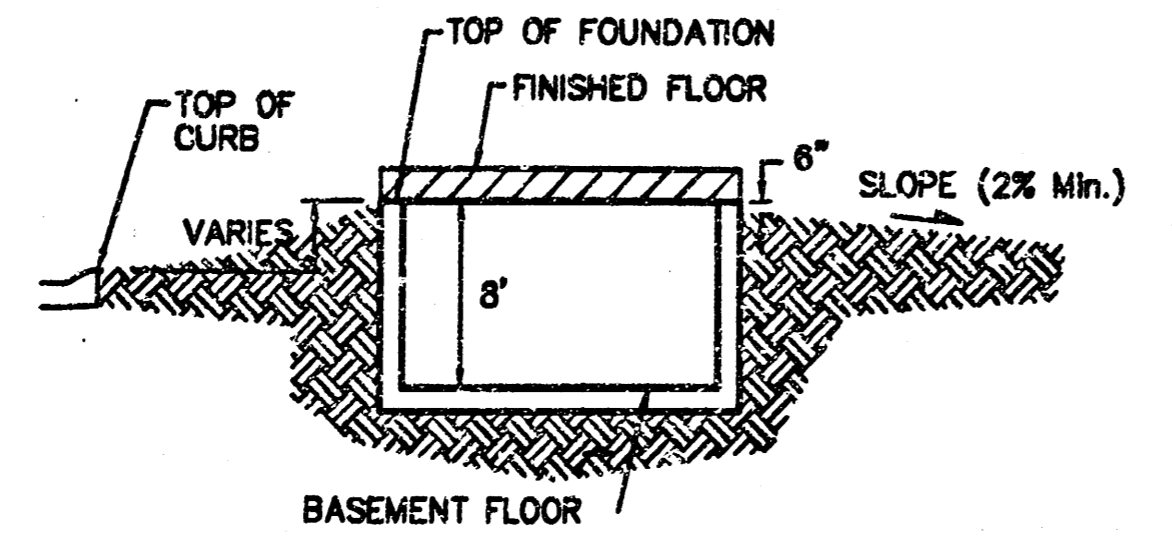
**NOTES:**  
 Proposed Top of Foundation Elevations Are Shown On Plans. Contractor to Set Finished Floor Elevations.  
 All Street Elevations Shown on Plans Are for Top of Curb (Full-Height).  
 This Grading Plan is Designed with Vow-Outs. Elevations Shown at Rear of House (XX.X V.O.).  
 Lot dimensions have been omitted on this plan, refer to the recorded plat for this information.  
 \* May Require Extra Deep Foundation

**BENCHMARKS:**  
 BM #1: Small RR spike in 2nd PP north of K-42 Highway, west side of Maize  
 Elev. = 143.61 (City Datum)  
 BM #2: Small RR spike in PP east of East 1/4 Corner (G)  
 Elev. = 147.00 (City Datum)  
 BM #3: "C" Top Headwall southeast corner K-42 Highway and Maize (County BM with City Datum)  
 Elev. = 144.04 (City Datum)

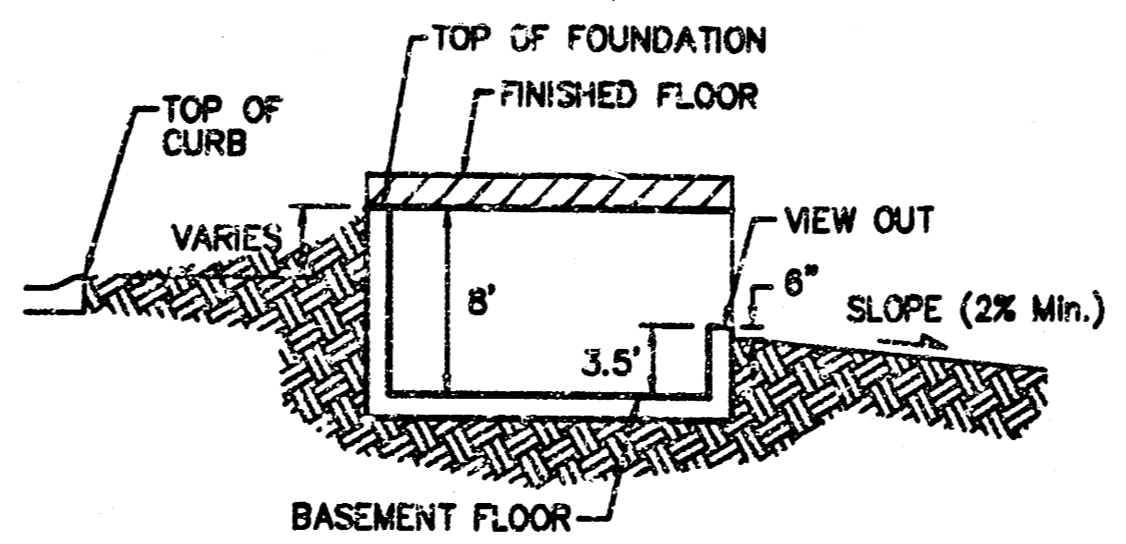
**GRADING PLAN**  
 DATE: OCTOBER 13, 2004  
 PHASE 1 ONLY  
 Lots 1-31, Block A  
 Lots 1-30, Block B



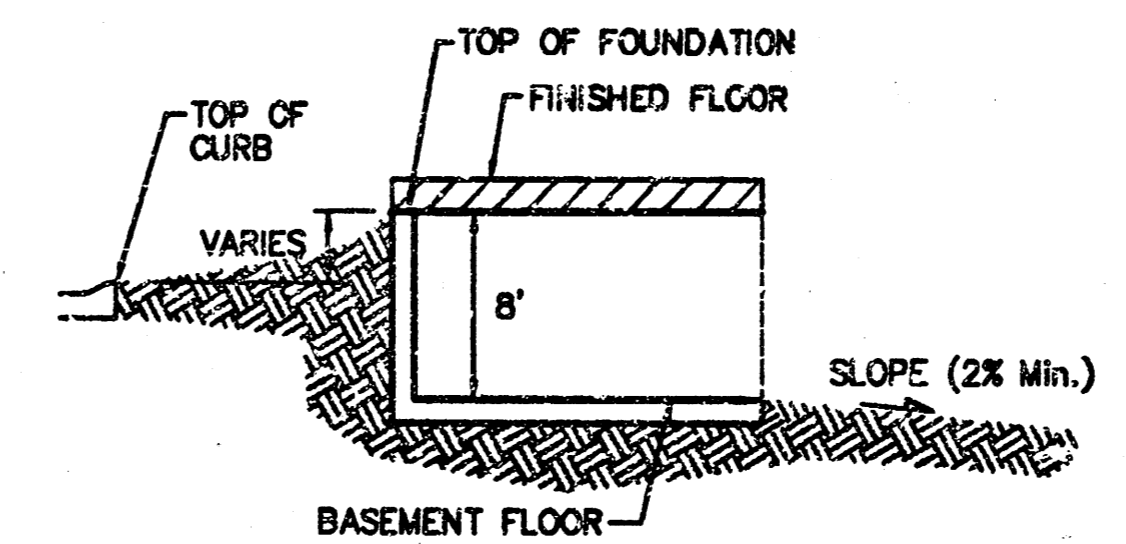
LOT	BLOCK	ELEVATION	
		CITY DATUM	NGVD29
16-22	B	144.5	1331.9
24-36	B	144.5	1331.9
40-47	B	144.5	1331.9



TYPICAL NON-VIEW OUT DETAIL  
NO SCALE



TYPICAL VIEW OUT DETAIL  
NO SCALE



TYPICAL WALK OUT DETAIL  
NO SCALE

Revised 10-13-2004

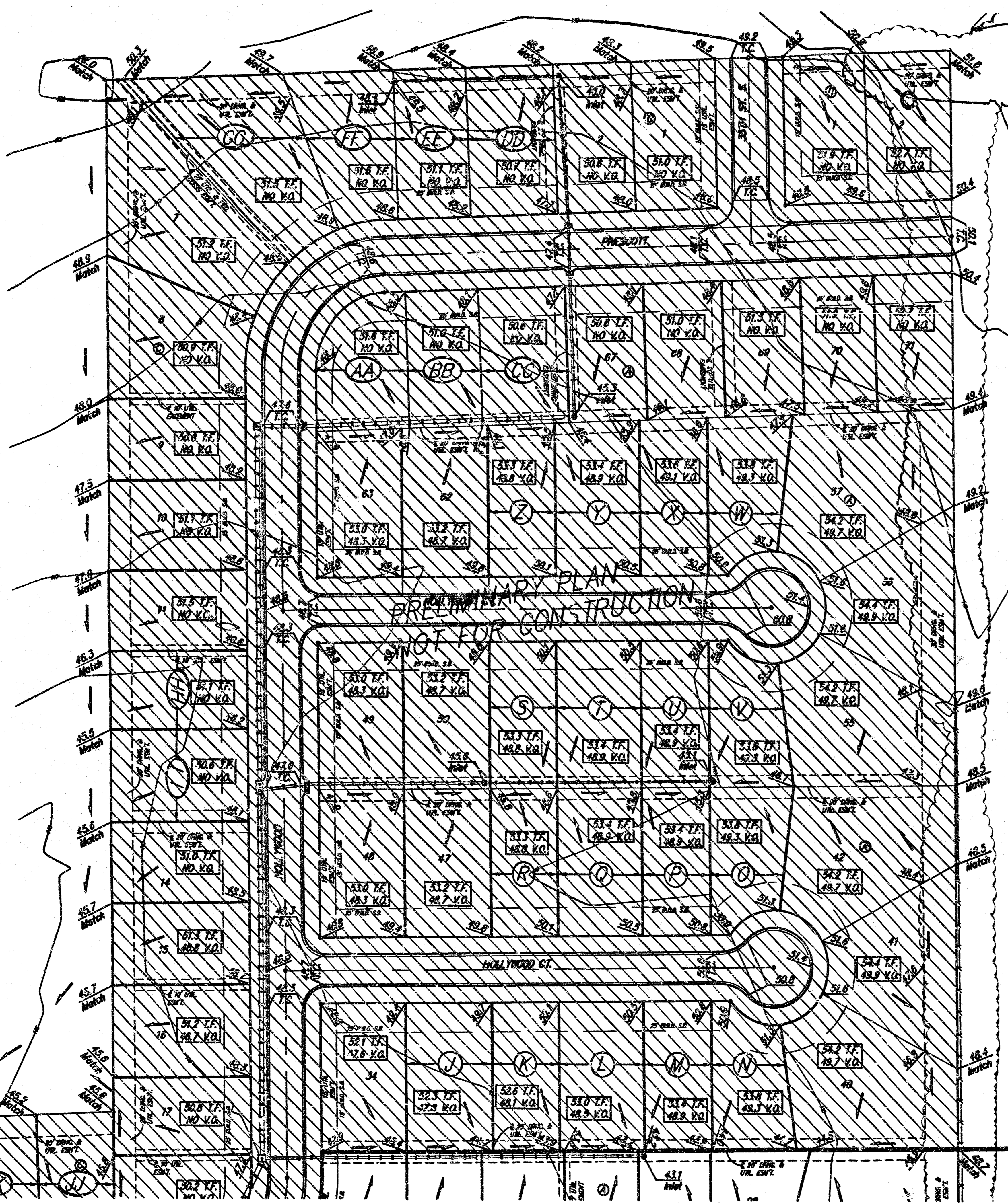
**GRADING PLAN**  
 WICHITA, SEDGWICK COUNTY, KANSAS

**BAUGHMAN COMPANY P.A.**  
 ENGINEERING, SURVEYING, & PLANNING

318-262-7271 • 318 ELLIS • WICHITA, KANSAS 67211

PROJECT NUMBER: \_\_\_\_\_ SHEET: **2** OF **3**

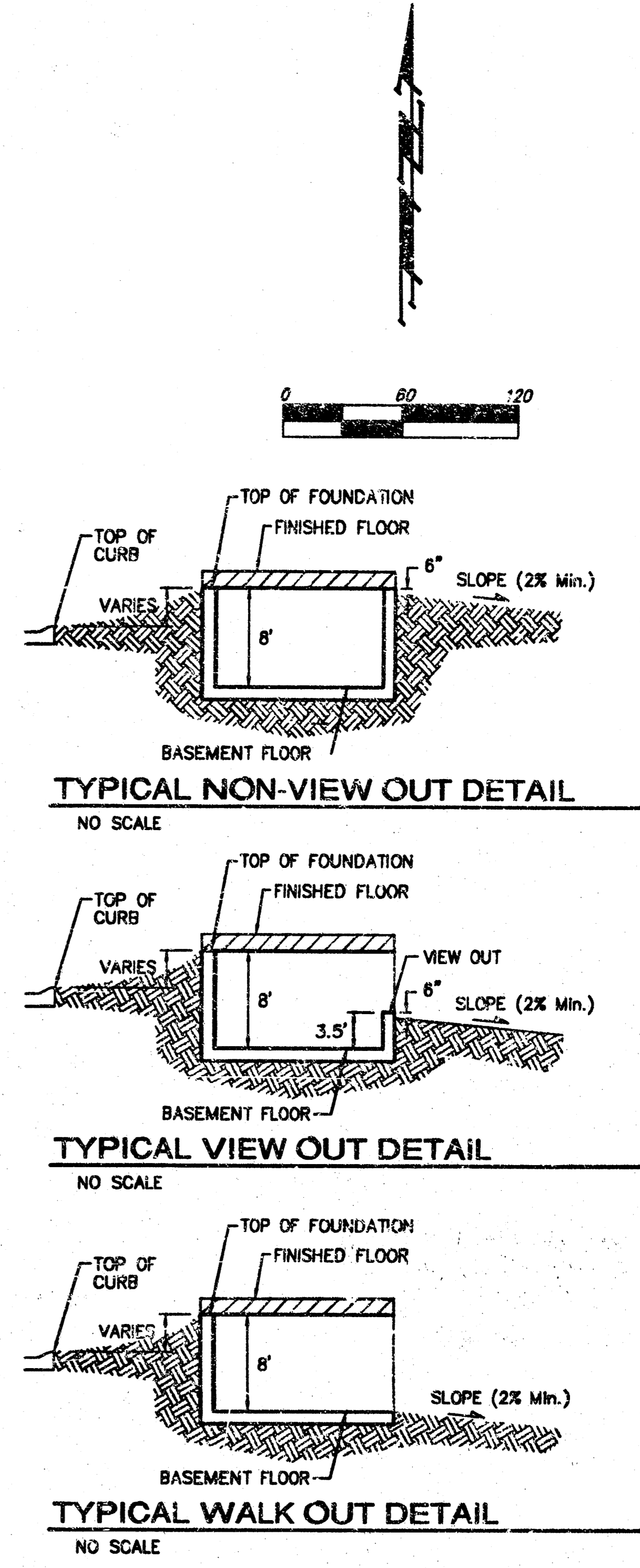
DESIGN: E.L.C. DRAWN: M.W.S. APPROVED: \_\_\_\_\_ DATE: 03/22/04 SCALE: 1"=60'



GRADING PLAN  
 DATE: OCTOBER 13, 2004  
 PHASE 1 ONLY  
 Lots 1-31, Block A  
 Lots 1-30, Block B

**BENCHMARK:**  
 BM #1: Small RR spike in 2nd PP north of K-42 Highway, west side of Maize  
 Elev. = 143.61 (City Datum)  
 BM #2: Small RR spike in PP east of East 1/4 Corner (G)  
 Elev. = 147.00 (City Datum)  
 BM #3: "□" Top Headwall southeast corner K-42 Highway and Maize (County BM with City Datum)  
 Elev. = 144.04 (City Datum)

MINIMUM BUILDING PAD ELEVATIONS FOR LOWEST OPENING TO THE STRUCTURES			
LOT	BLOCK	ELEVATION	
		CITY DATUM	NGVD29
16-22	B	144.5	1,331.9
24-38	B	144.5	1,331.9
40-47	B	144.5	1,331.9



**NOTES:**  
 Proposed Top of Foundation Elevations Are Shown On Plans. Contractor to Set Finished Floor Elevations.  
 All Street Elevations Shown on Plans Are for Top of Curb (Full-Height).  
 This Grading Plan is Designed with View-Outs. Elevations Shown at Rear of House (GCX V.O.).  
 Lot dimensions have been omitted on this plan, refer to the recorded plot for this information.  
 \* May Require Extra Deep Foundation

Revised 10-13-2004

**HARVEY HANSEN RIDGE ADDITION**  
**GRADING PLAN**  
 WICHITA, SEDGWICK COUNTY, KANSAS

**BAUGHMAN COMPANY P.A.**  
 ENGINEERING, SURVEYING, & PLANNING  
 318-202-7271 • 318 ELLIS • WICHITA, KANSAS 67211

PROJECT NUMBER: \_\_\_\_\_ SHEET: 3

DESIGN: BLG DRAWN: MWS APPROVED: \_\_\_\_\_ DATE: 03/22/04 SCALE: 1"=60'