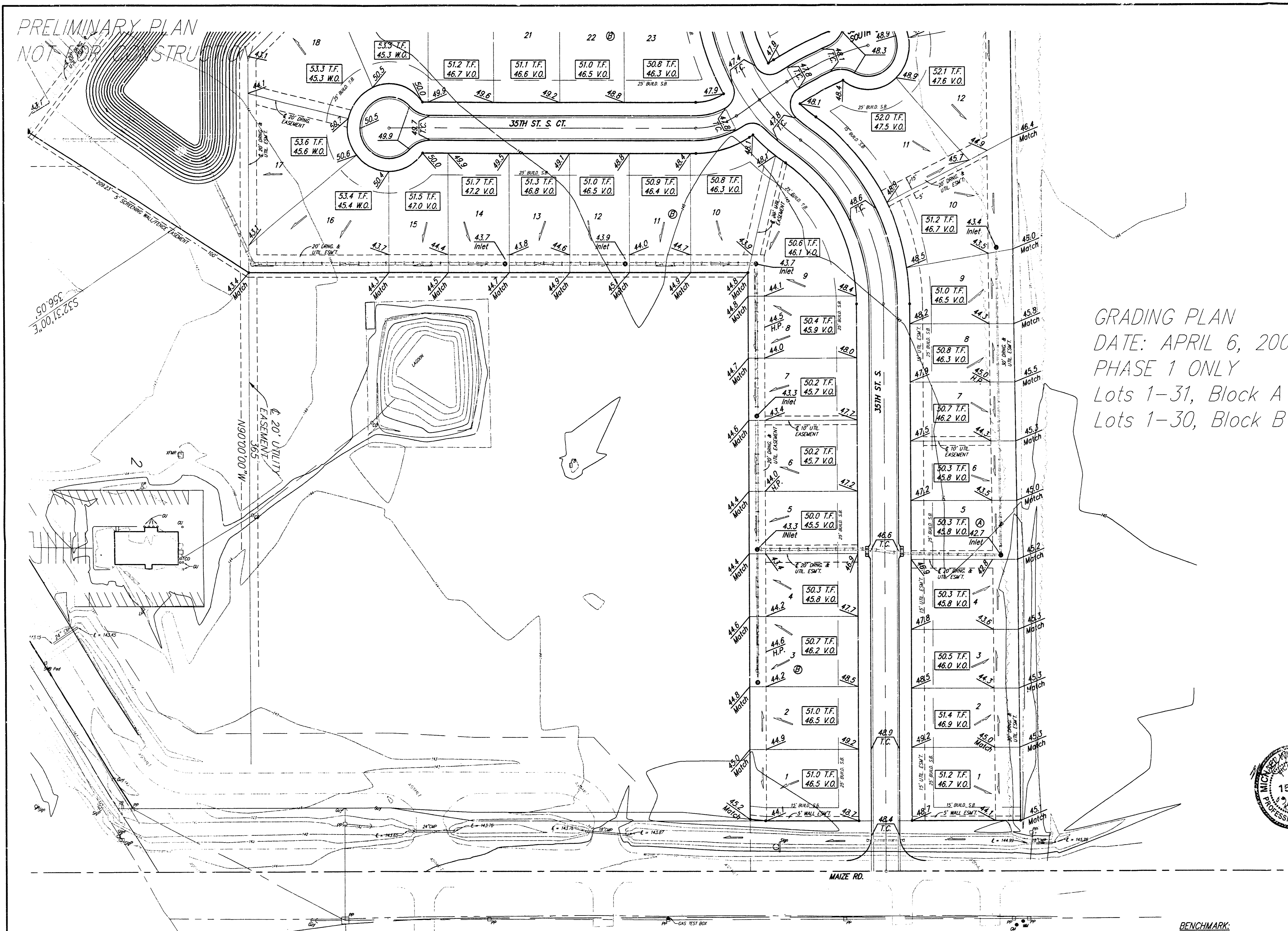
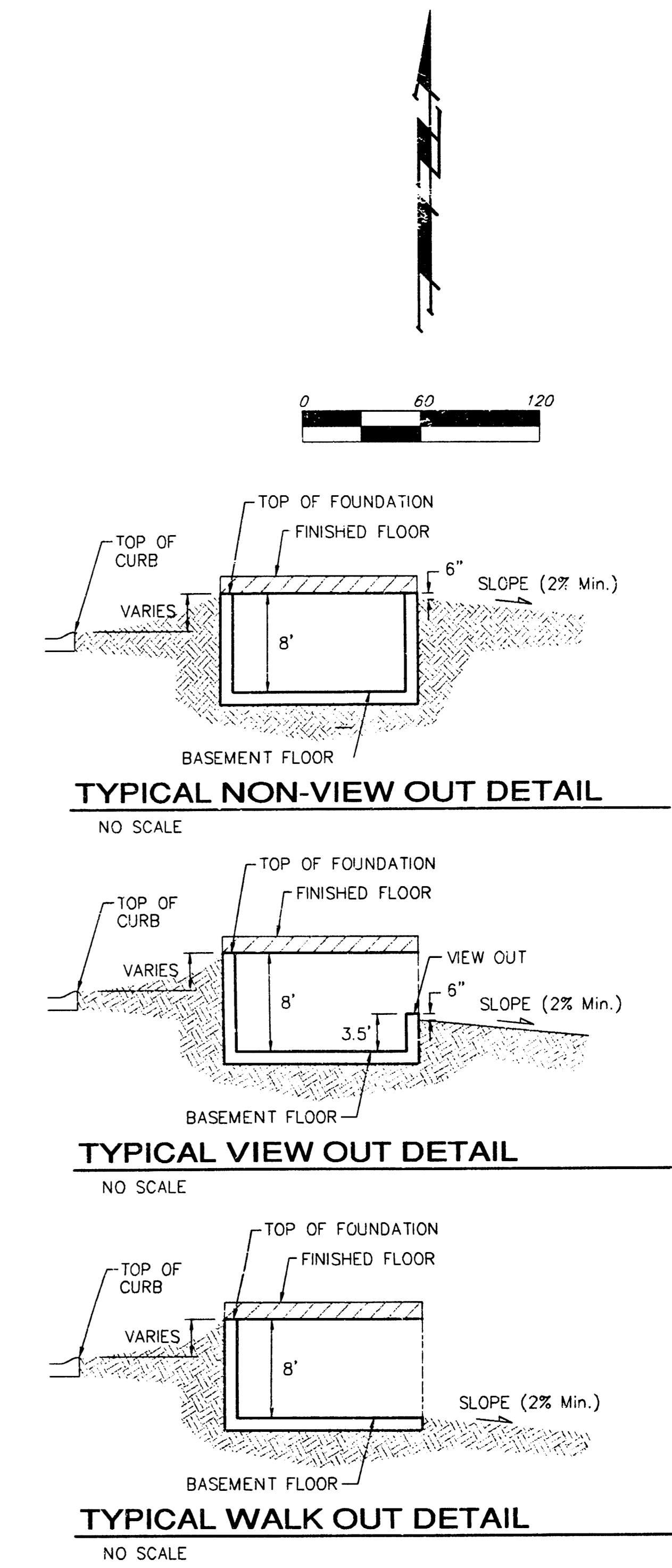


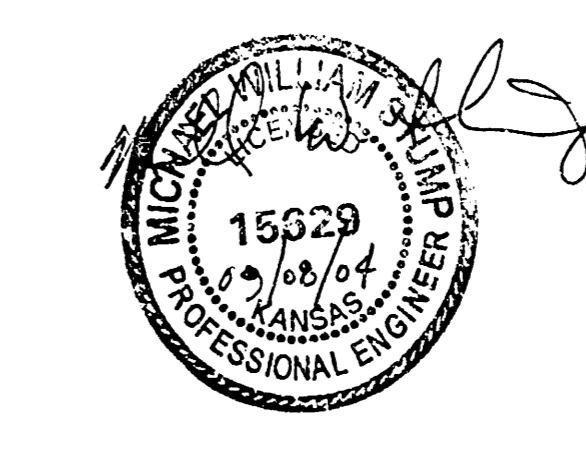
PRELIMINARY PLAN  
NOT FOR CONSTRUCTION



GRADING PLAN  
DATE: APRIL 6, 2004  
PHASE 1 ONLY  
Lots 1-31, Block A  
Lots 1-30, Block B



**NOTES:**  
Proposed Top of Foundation Elevations Are Shown On Plans. Contractor to Set Finished Floor Elevations.  
All Street Elevations Shown on Plans Are for Top of Curb (Full-Height).  
This Grading Plan is Designed with View-Outs. Elevations Shown at Rear of House (XX.X V.O.).  
Lot dimensions have been omitted on this plan, refer to the recorded plat for this information.  
\* May Require Extra Deep Foundation



**APPROVED  
DRAINAGE PLAN**

MINIMUM BUILDING PAD ELEVATIONS FOR LOWEST OPENING TO THE STRUCTURES

LOT	BLOCK	ELEVATION	
		CITY DATUM	NGVD29
16-22	B	144.5	1331.9
24-39	B	144.5	1331.9
40-47	B	144.5	1331.9

**BENCHMARK:**  
BM #1: Small RR spike in 2nd PP north of K-42 Highway, west side of Maize  
Elev. = 143.61 (City Datum)  
BM #2: Small RR spike in PP east of East 1/4 Corner (G)  
Elev. = 147.00 (City Datum)  
BM #3: "□" Top Headwall southeast corner K-42 Highway and Maize (County BM with City Datum)  
Elev. = 144.04 (City Datum)

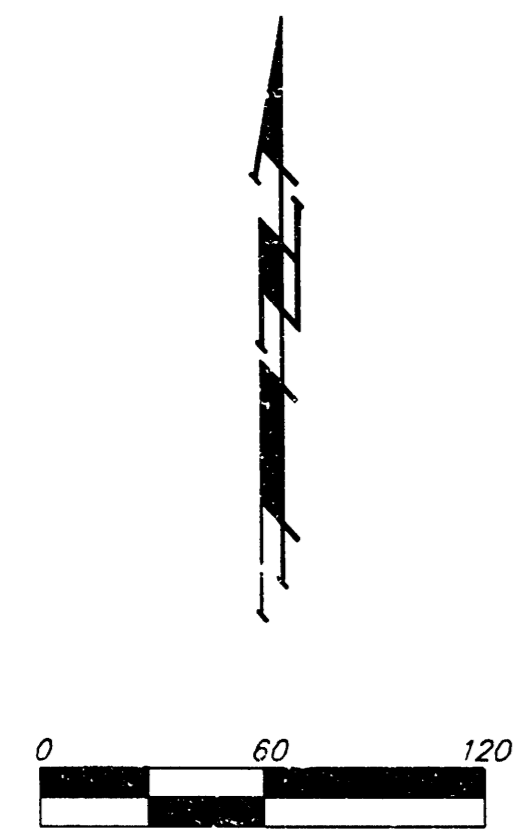
HARVEST RIDGE ADDITION  
**GRADING PLAN**  
WICHITA, SEDGWICK COUNTY, KANSAS

**BAUGHMAN COMPANY P.A.**  
ENGINEERING, SURVEYING, & PLANNING  
316-262-7271 • 315 ELLIS • WICHITA, KANSAS 67211

PROJECT NUMBER: \_\_\_\_\_  
SHEET: **1** OF **3**

DESIGN: BLG    DRAWN: MWS    APPROVED: \_\_\_\_\_    DATE: 03/22/04    SCALE: 1"=60'

R.L. CARR DRG 10 APR 2004



**NOTES:**  
 Proposed Top of Foundation Elevations Are Shown on Plans. Contractor to Set Finish- Floor Elevations.

All Street Elevations Shown on Plans Are for Top of Curb (Full-Height).

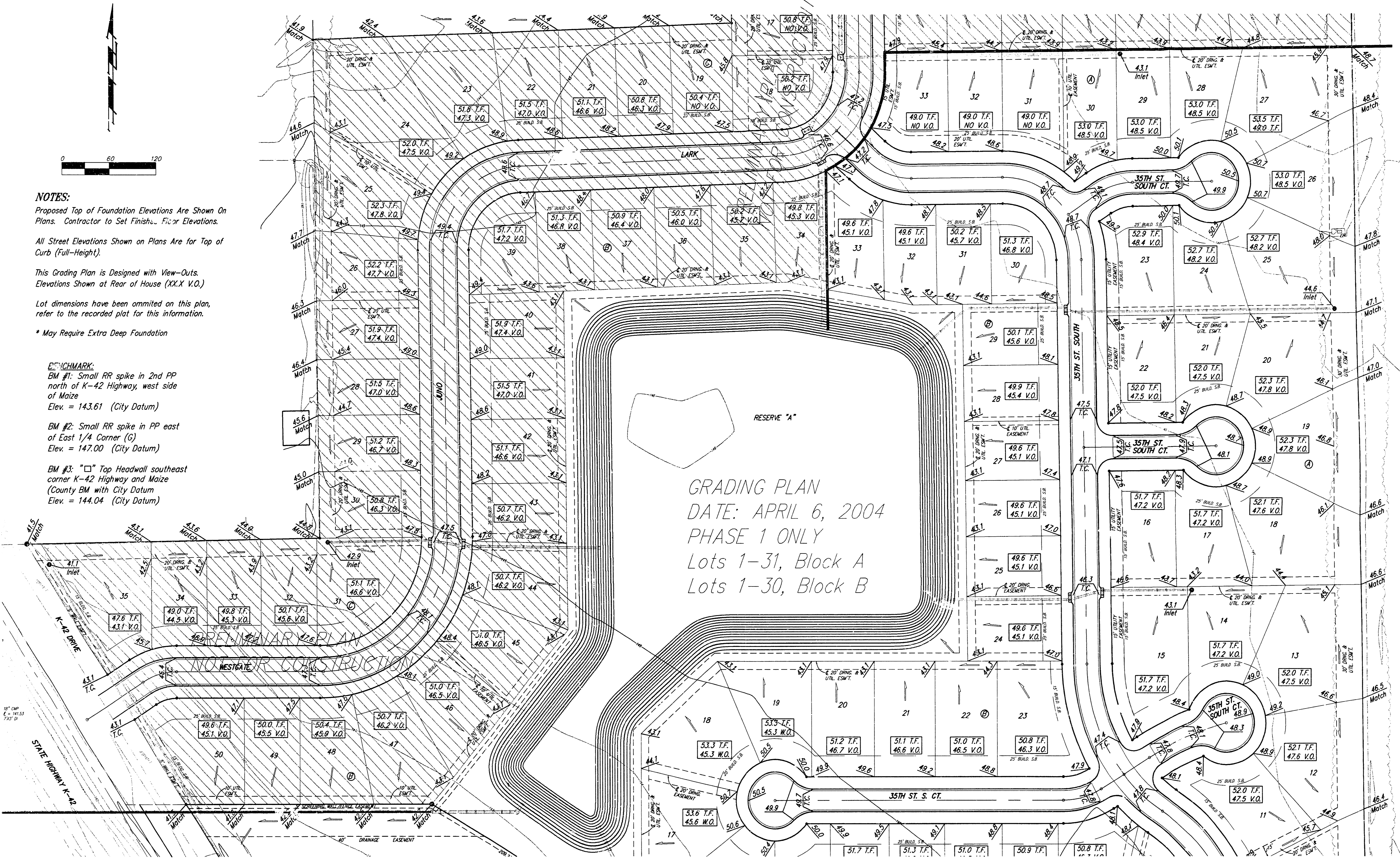
This Grading Plan is Designed with View-Outs. Elevations Shown at Rear of House (XX.X V.O.).

Lot dimensions have been omitted on this plan, refer to the recorded plat for this information.

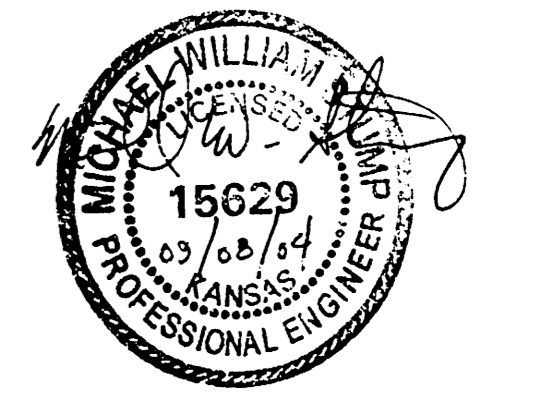
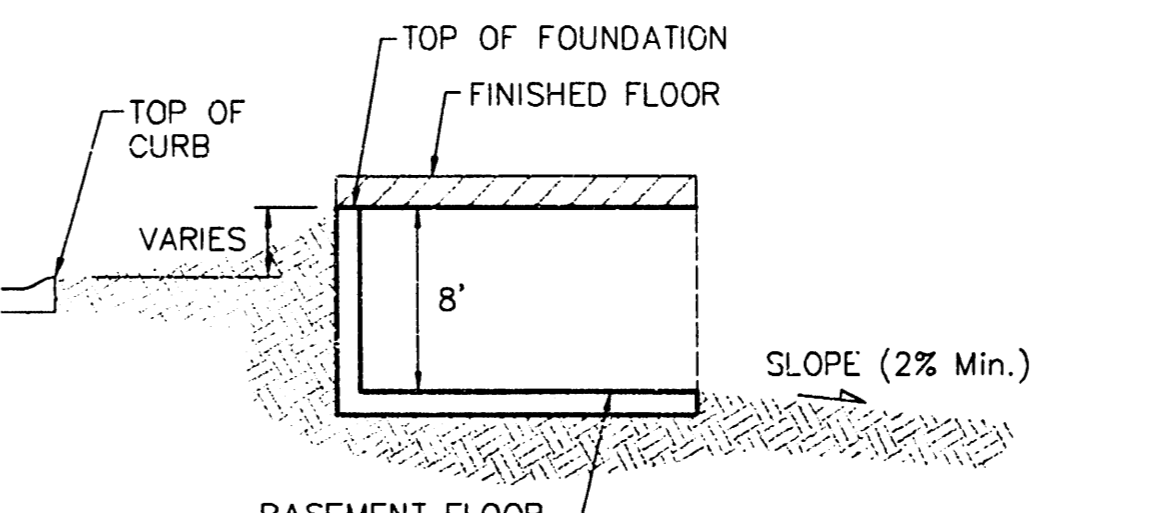
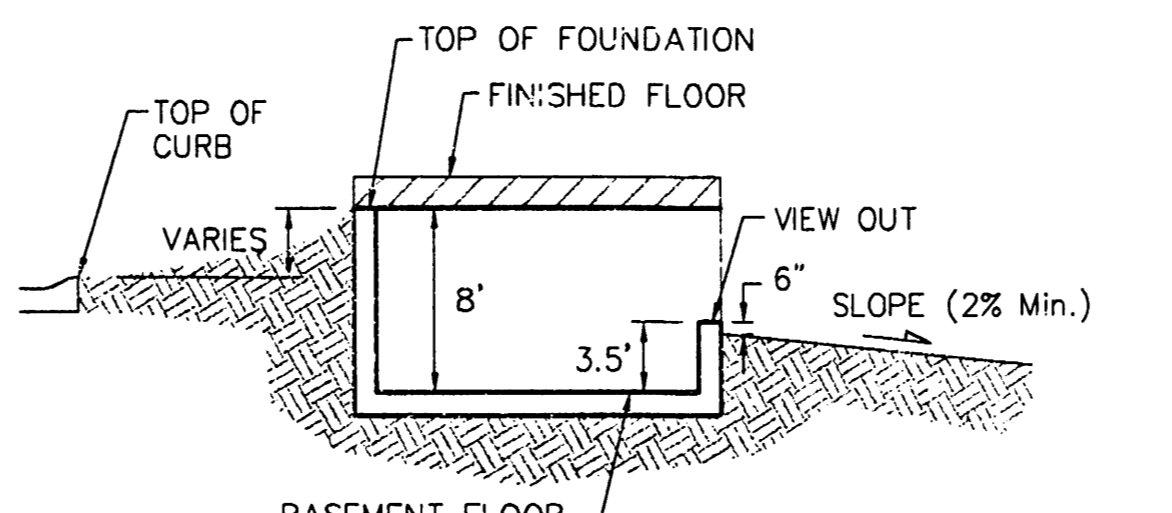
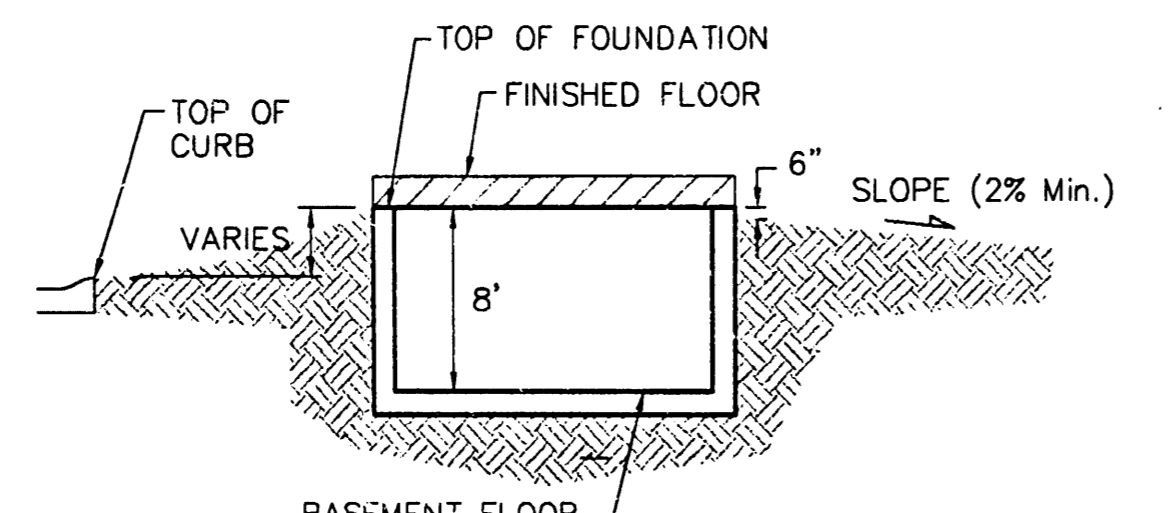
\* May Require Extra Deep Foundation

**BENCHMARK:**  
 BM #1: Small RR spike in 2nd PP north of K-42 Highway, west side of Maize  
 Elev. = 143.61 (City Datum)  
 BM #2: Small RR spike in PP east of East 1/4 Corner (G)  
 Elev. = 147.00 (City Datum)  
 BM #3: "□" Top Headwall southeast corner K-42 Highway and Maize (County BM with City Datum)  
 Elev. = 144.04 (City Datum)

GRADING PLAN  
 DATE: APRIL 6, 2004  
 PHASE 1 ONLY  
 Lots 1-31, Block A  
 Lots 1-30, Block B



MINIMUM BUILDING PAD ELEVATIONS FOR LOWEST OPENING TO THE STRUCTURES			
LOT	BLOCK	ELEVATION	
		CITY DATUM	NGVD29
16-22	B	144.5	1331.9
24-38	B	144.5	1331.9
40-47	B	144.5	1331.9

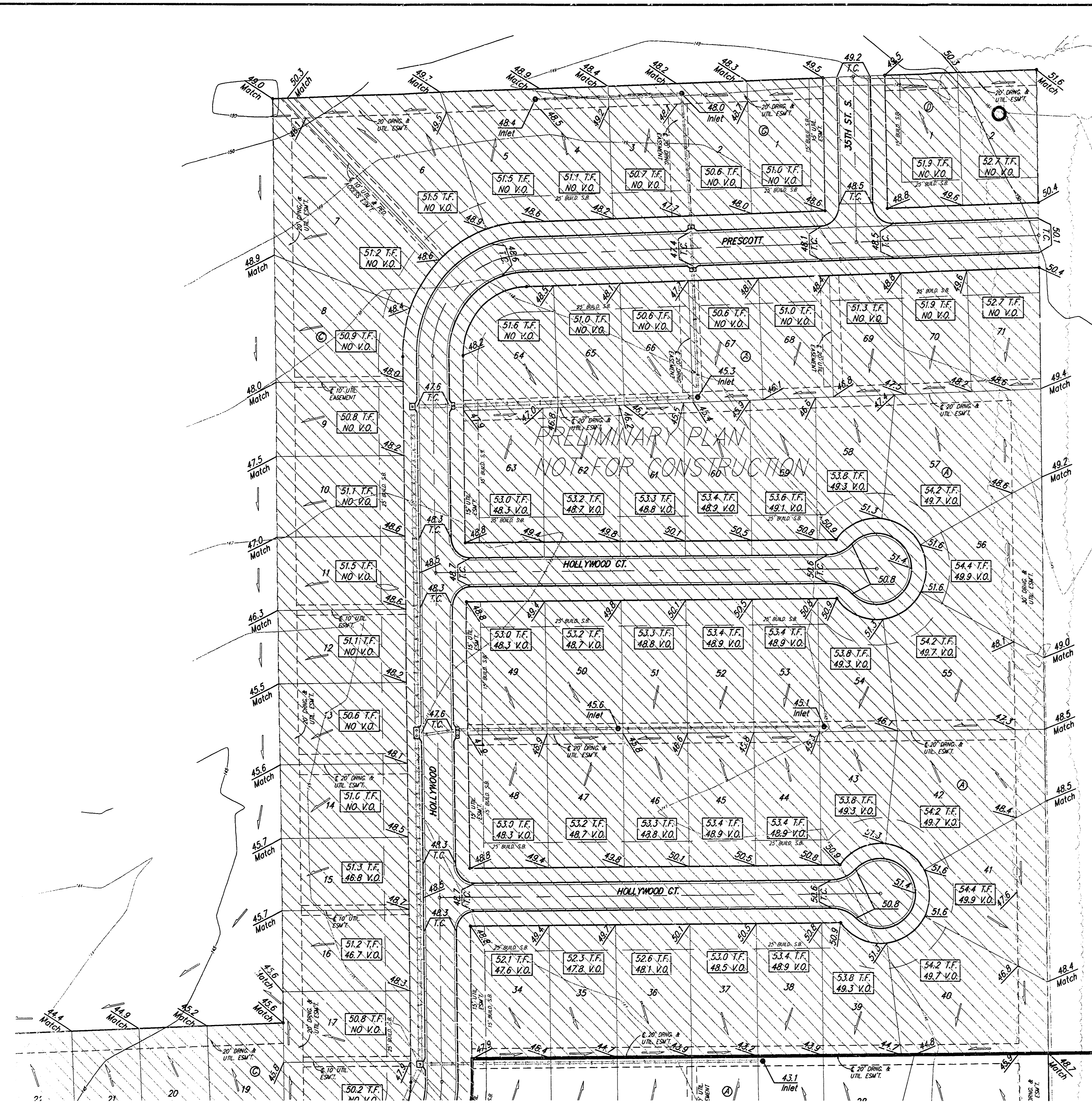


HARVEST RIDGE ADDITION  
**GRADING PLAN**  
 WICHITA, SEDGWICK COUNTY, KANSAS

**BAUGHMAN COMPANY P.A.**  
 ENGINEERING, SURVEYING, & PLANNING  
 316-262-7271 • 315 ELLIS • WICHITA, KANSAS 67211

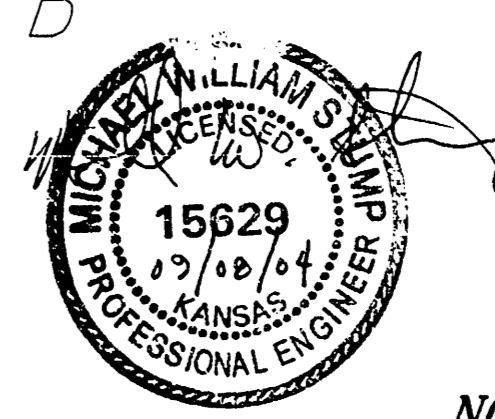
PROJECT NUMBER: 15629  
 SHEET OF 3

DESIGN: BLC    DRAWN: MWS    APPROVED: [Signature]    DATE: 03/22/04    SCALE: 1"=60'

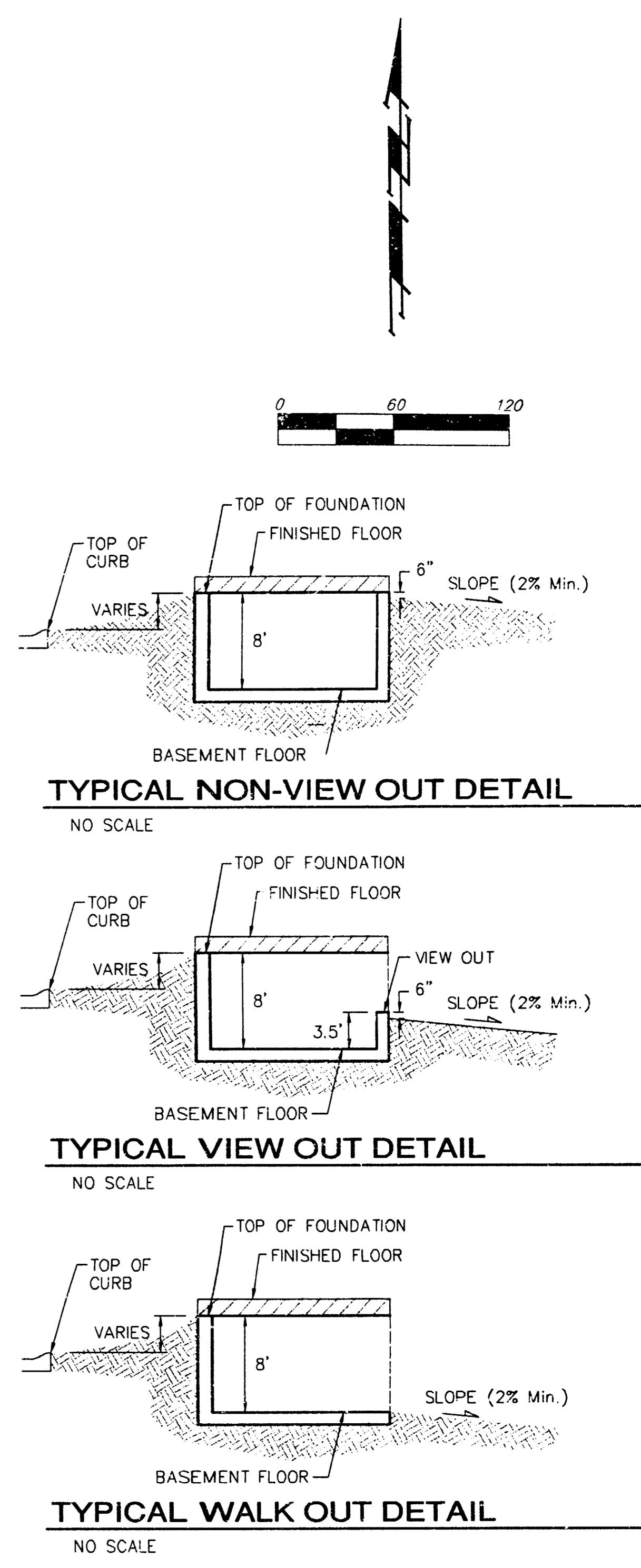


PRELIMINARY PLAN  
NOT FOR CONSTRUCTION

GRADING PLAN  
DATE: APRIL 6, 2004  
PHASE 1 ONLY  
Lots 1-31, Block A  
Lots 1-30, Block B



**BENCHMARK:**  
 BM #1: Small RR spike in 2nd PP north of K-42 Highway, west side of Maize  
 Elev. = 143.61 (City Datum)  
 BM #2: Small RR spike in PP east of East 1/4 Corner (G)  
 Elev. = 147.00 (City Datum)  
 BM #3: "□" Top Headwall southeast corner K-42 Highway and Maize  
 (County BM with City Datum)  
 Elev. = 144.04 (City Datum)



**NOTES:**  
 Proposed Top of Foundation Elevations Are Shown On Plans. Contractor to Set Finished Floor Elevations.  
 All Street Elevations Shown on Plans Are for Top of Curb (Full-Height).  
 This Grading Plan is Designed with View-Outs. Elevations Shown at Rear of House (XX.X V.O.)  
 Lot dimensions have been omitted on this plan, refer to the recorded plat for this information.  
 \* May Require Extra Deep Foundation

MINIMUM BUILDING PAD ELEVATIONS FOR LOWEST OPENING TO THE STRUCTURES			
LOT	BLOCK	ELEVATION	
		CITY DATUM	NGVD29
16-22	B	144.5	1331.9
24-38	B	144.5	1331.9
40-47	B	144.5	1331.9

HAVEST RIDGE ADDITION  
**GRADING PLAN**  
 WICHITA, SEDGWICK COUNTY, KANSAS

**BAUGHMAN COMPANY P.A.**  
 ENGINEERING, SURVEYING, & PLANNING  
 316-262-7271 • 315 ELLIS • WICHITA, KANSAS 67211

PROJECT NUMBER: \_\_\_\_\_ SHEET **3** OF **8**

DESIGN: BLC DRAWN: MWS APPROVED: \_\_\_\_\_ DATE: 03/22/04 SCALE: 1"=60'