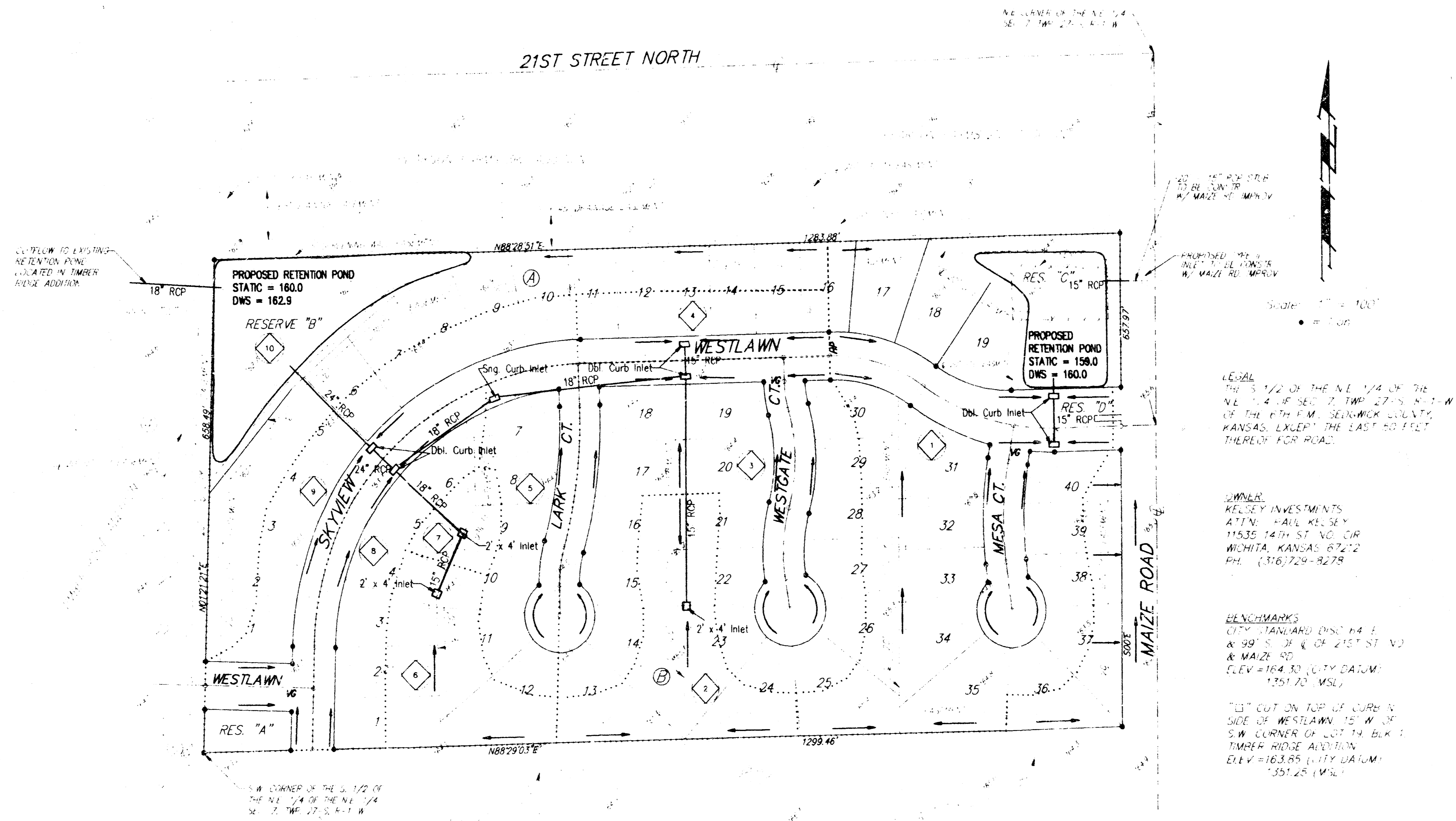


DRAINAGE PLAN

HEDGEAPPLE ADDITION

WICHITA, SEDGWICK COUNTY, KANSAS



LEGAL: THE S 1/2 OF THE NE 1/4 OF THE NE 1/4 OF SEC. 7, TWP. 27-S, R. 1-W OF THE 17TH P.M., SEDGWICK COUNTY, KANSAS, EXCEPT THE LAST 60 FEET THEREOF FOR ROAD.

OWNER:
RESEY INVESTMENTS
ATTN: PAUL RESEY
1143E 14TH ST. W. 2ND FLOOR
WICHITA, KANSAS 67222
PH: (316) 729-9278

BENCHMARKS
CITY STANDARD DWS #4 E
99' S OF E OF 21ST ST. W
MAIZE RD.
ELEV = 164.80 (CITY DATUM)
1251.70 (MSL)

"1" CUT ON TOP OF CURB ON SIDE OF WESTLAWN, 10' W OF S.W. CORNER OF LOT 14, BLK. 1, MARA RIDGE ADDITION.
ELEV = 163.85 (CITY DATUM)
1251.25 (MSL)

MINIMUM PAD ELEVATIONS

Lot	Block	Elevation (City)
3-10	A	1351.3 (163.9)
18-19	A	1348.4 (161.0)

Lot No.	Area (Acres)	Q ₁ "	Q ₂ "	Q ₁₀₀ "
1	5.41	0.54	11.2	21.5
2	1.20	0.54	2.5	4.8
3	3.42	0.54	7.1	13.6
4	0.75	0.54	1.6	3.0
5	1.12	0.54	2.3	4.5
6	0.91	0.54	1.9	3.6
7	0.27	0.54	0.6	1.1
8	1.15	0.54	2.4	4.6
9	1.92	0.54	4.0	7.6
10	4.00	0.54	8.3	15.3

NOTE: The proposed drainage plan provided herein is a generally defined plan to follow for design. It is recognized and assumed that upon the final design of street and storm sewer improvements within this plat that the designer will modify or alter the general drainage plan as necessary in order to implement the installation of the improvements to obtain the most economical design and construction possible.

- LEGEND
- PROPOSED STORM WATER SEWER SYSTEM
 - BASIN NUMBER
 - BASIN BOUNDARY