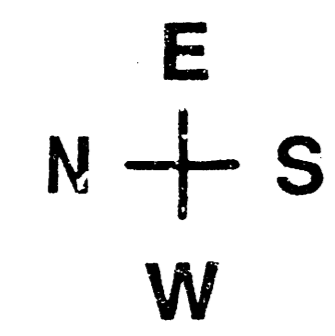


# HEIGHTS BASEBALL ADDITION

DRAINAGE PLAN SURVEY BY OTHERS

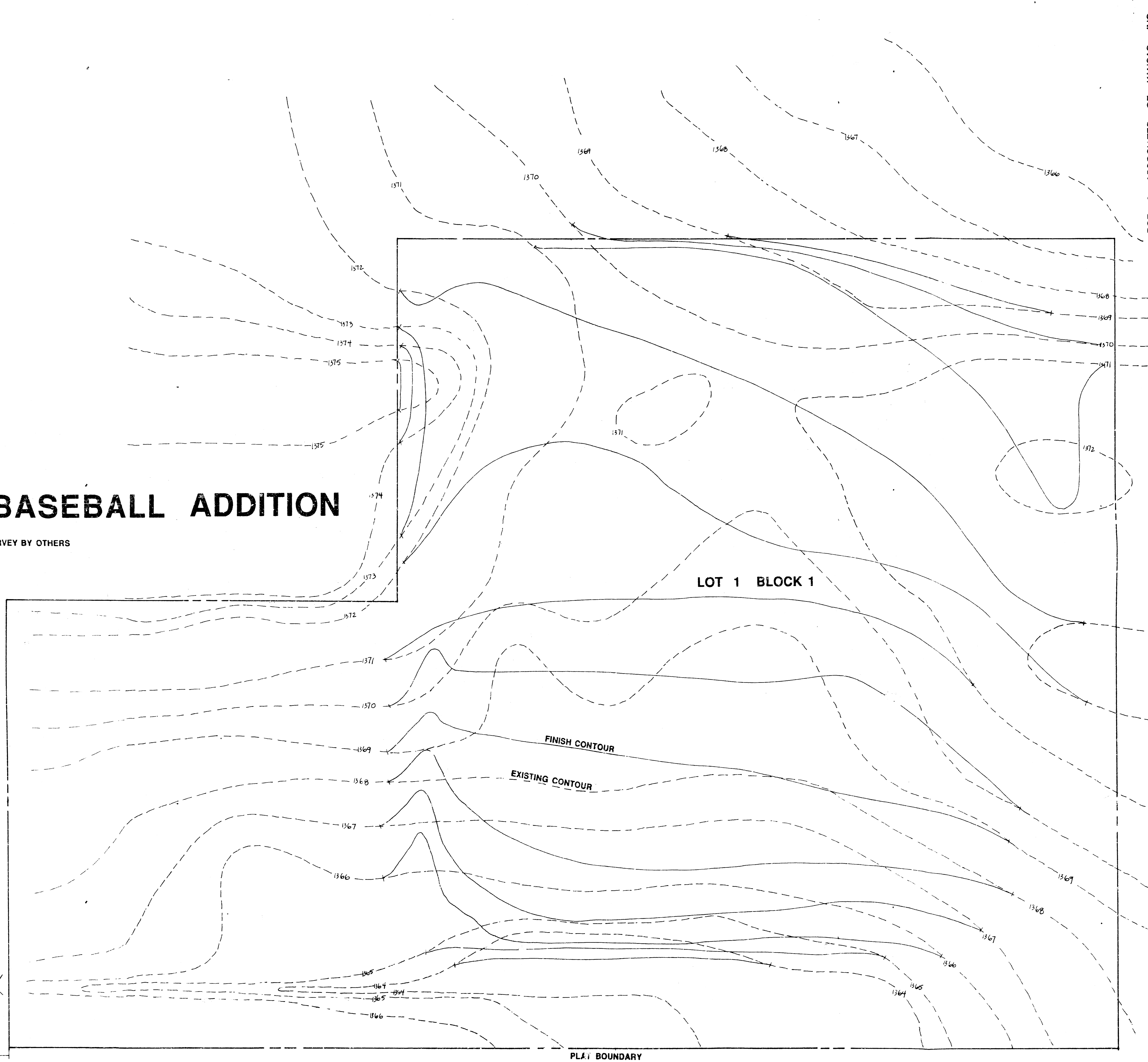


SCALE 1" = 50'

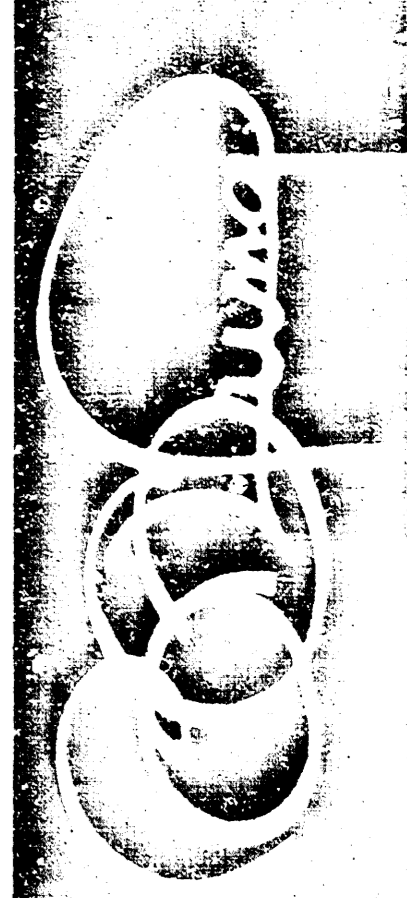
NW COR. NE 1/4  
SEC 22-26-1E

2 5' x 6' RCBC

53rd STREET NORTH



POE & ASSOCIATES OF KANSAS, INC.  
Consulting Engineers  
424 N. Oliver, Suite 110 Wichita, KS 67208 316-685-4114



**BILL G. YUNG DESIGN**  
4812 E. 20TH STREET NORTH  
316-683-5567 WICHITA, KS 67220  
FAX 316-683-3236

DATE JUNE 4, 1992  
REV.

SHEET TITLE DRAINAGE PLAN

PROJECT HEIGHTS BASEBALL ADDITION

SHEET