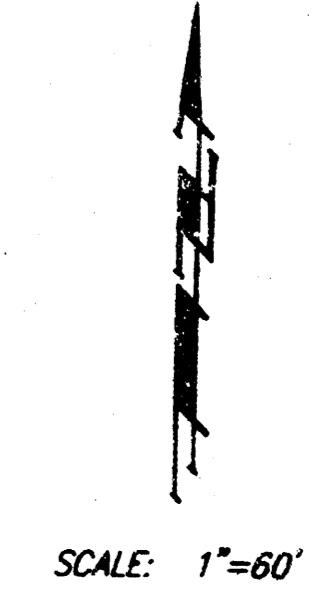


Typical View Out Section  
No Scale

V.O. indicates view out structures.  
V.O. can vary from 1' to 3.5' if noted.

W.O. indicates special walk out condition  
where lot will drain at 2% min.,  
but special protective grading is required.  
Contact consultant for grading recommendation.



BENCHMARKS:  
604' MAIL IN HIGHLINE POLE 600' WEST  
AND 31' NORTH OF N 1/4 CORNER,  
SEC. 13, TWP. 27-S, R-2-W.  
ELEVATION = 1340.96 (M.S.L.)  
153.55 (CITY DATUM)

"a" CUT ON EAST CAP. NORTH SIDE  
OF BRIDGE 1350' EAST OF N 1/4 CORNER,  
SEC. 13, TWP. 27-S, R-2-W.  
ELEVATION = 1337.46 (M.S.L.)  
150.06 (CITY DATUM)

MINIMUM BUILDING PAD ELEVATIONS  
FOR LOWEST OPENING OF STRUCTURE

Lot & Block	City Datum	M.S.L.
11, 12, 13, 14, 21, 22, 27, Blk. 1		
1, 2, 3, 4, 5, 6, 12, Blk. 3	151.0	1332.4
1, 2, 3, 4, 5, 6, 7, 8, 9, Blk. 4		
1, Blk. 5		

REVISED 8/6/96 DMN REVISED 4/4/96

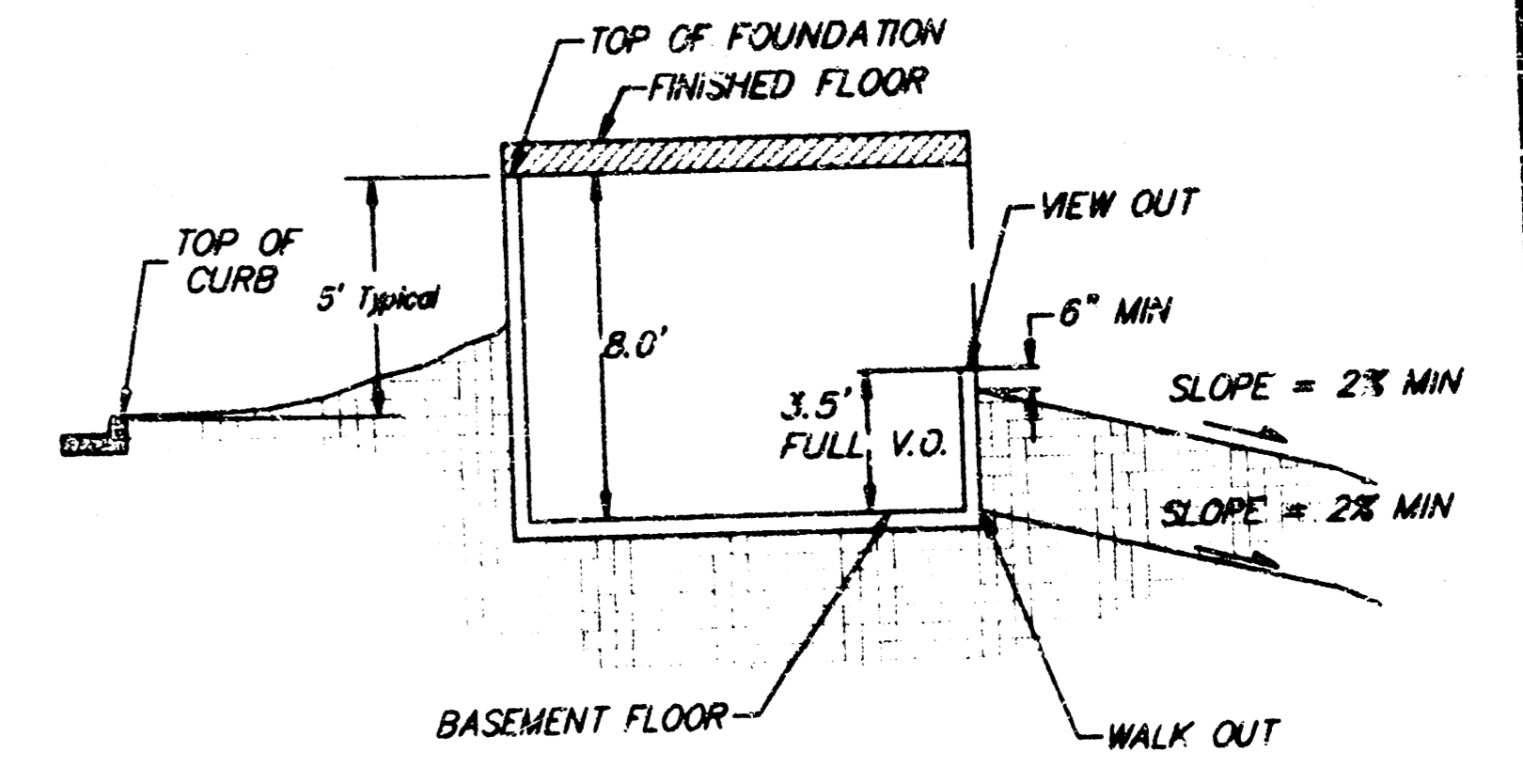
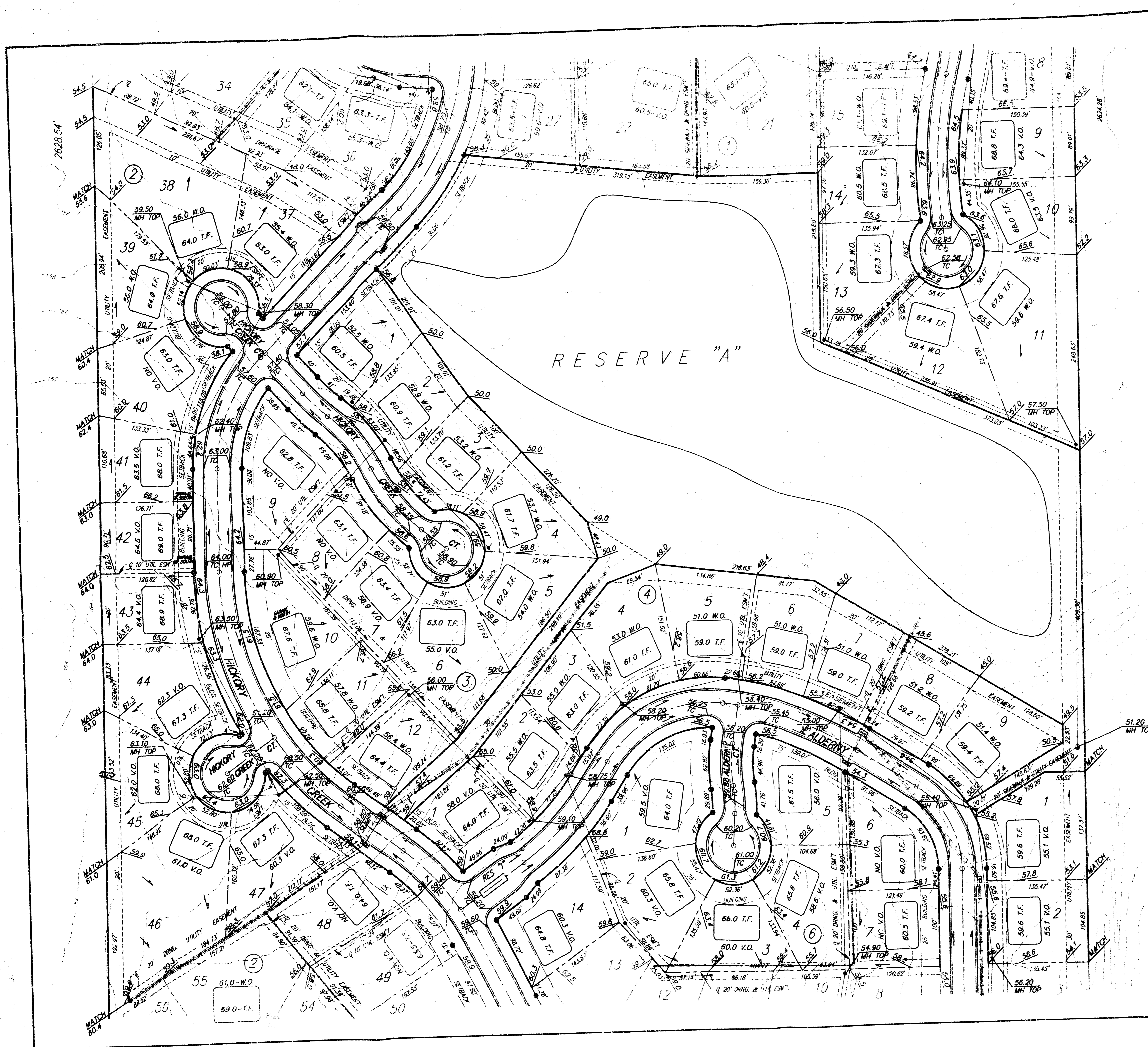
**HICKORY CREEK ESTATES**  
**LOT GRADING PLAN**

**BAUGHMAN COMPANY P.A.**  
ENGINEERING, SURVEYING, & PLANNING  
315-292-7271 • 315 ELLIS • WICHITA, KANSAS 67211

PROJECT NUMBER: \_\_\_\_\_

DESIGN: UP DRAWN: CCE/BAM APPROVED: \_\_\_\_\_ DATE: 11-95 SCALE: 1"=60'

SHEET 1 OF 3



Typical View Out Section  
No Scale

V.O. indicates view out structures.  
V.O. can vary from 1' to 3.5' if noted.

W.O. indicates full walk out structures.

W.O.\* indicates special walk out condition  
where lot will drain at 2% min.,  
but special protective grading is required.  
Contact consultant for grading recommendation.



**BENCHMARKS:**  
604 NAIL IN HIGHLINE POLE 600' WEST  
AND 31' NORTH OF N 1/4 CORNER,  
SEC. 13, TWP. 27-S, R-2-W  
ELEVATION = 1340.96 (M.S.L.)  
153.56 (CITY DATUM)  
\* CUT ON EAST CAP, NORTH SIDE  
OF BRIDGE 1350' EAST OF N 1/4 CORNER,  
SEC. 13, TWP. 27-S, R-2-W  
ELEVATION = 1337.46 (M.S.L.)  
150.06 (CITY DATUM)

MINIMUM BUILDING PAD ELEVATIONS  
FOR LOWEST OPENING OF STRUCTURE

Lot & Block	City Datum	M.S.L.
11, 12, 13, 14, 21, 22, 27, Blk. 1	151.0	1338.4
1, 2, 3, 4, 5, 6, 12, Blk. 3		
1, 2, 3, 4, 5, 6, 7, 8, 9, Blk. 4		
1, Blk. 5		

REvised 4/4/96

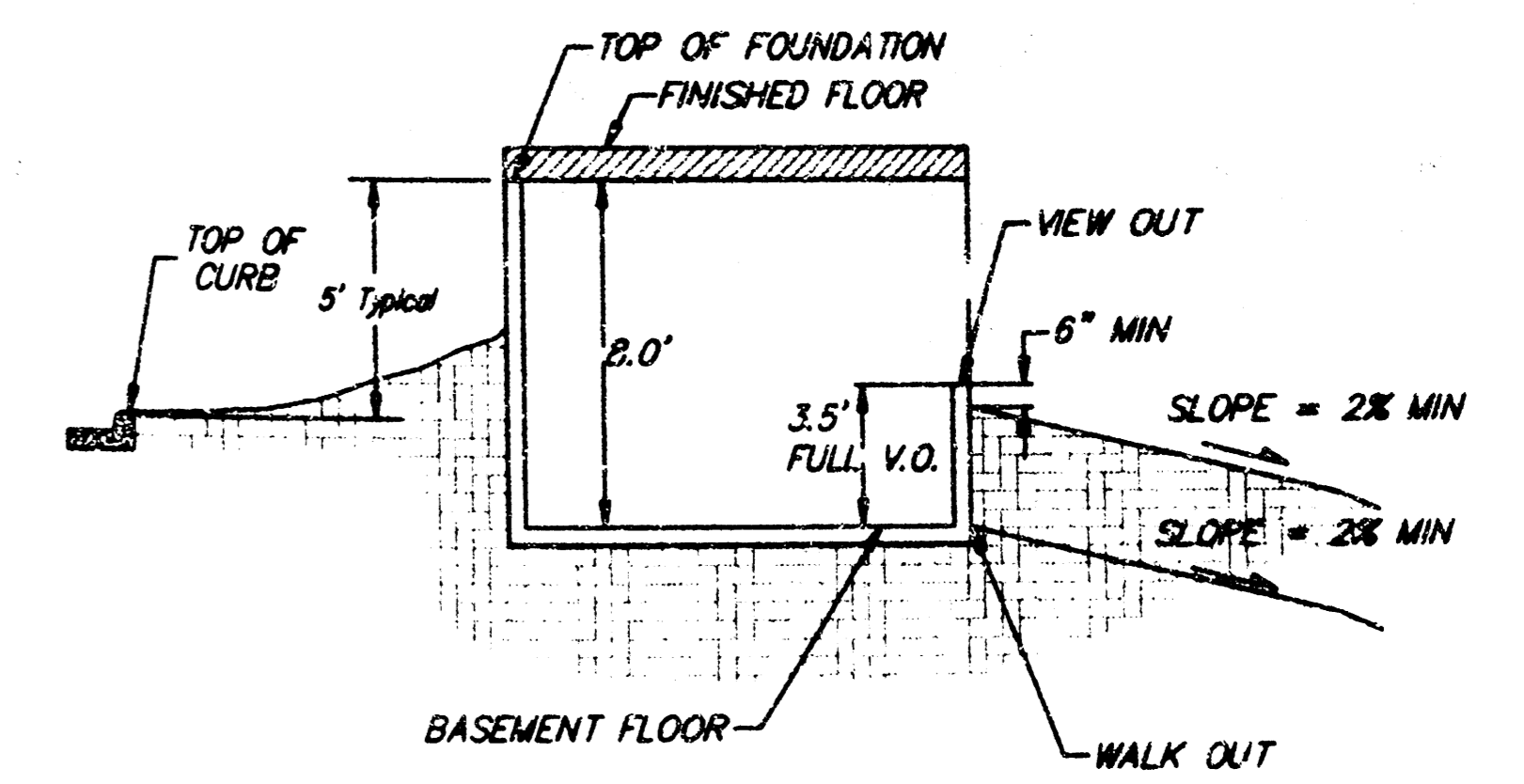
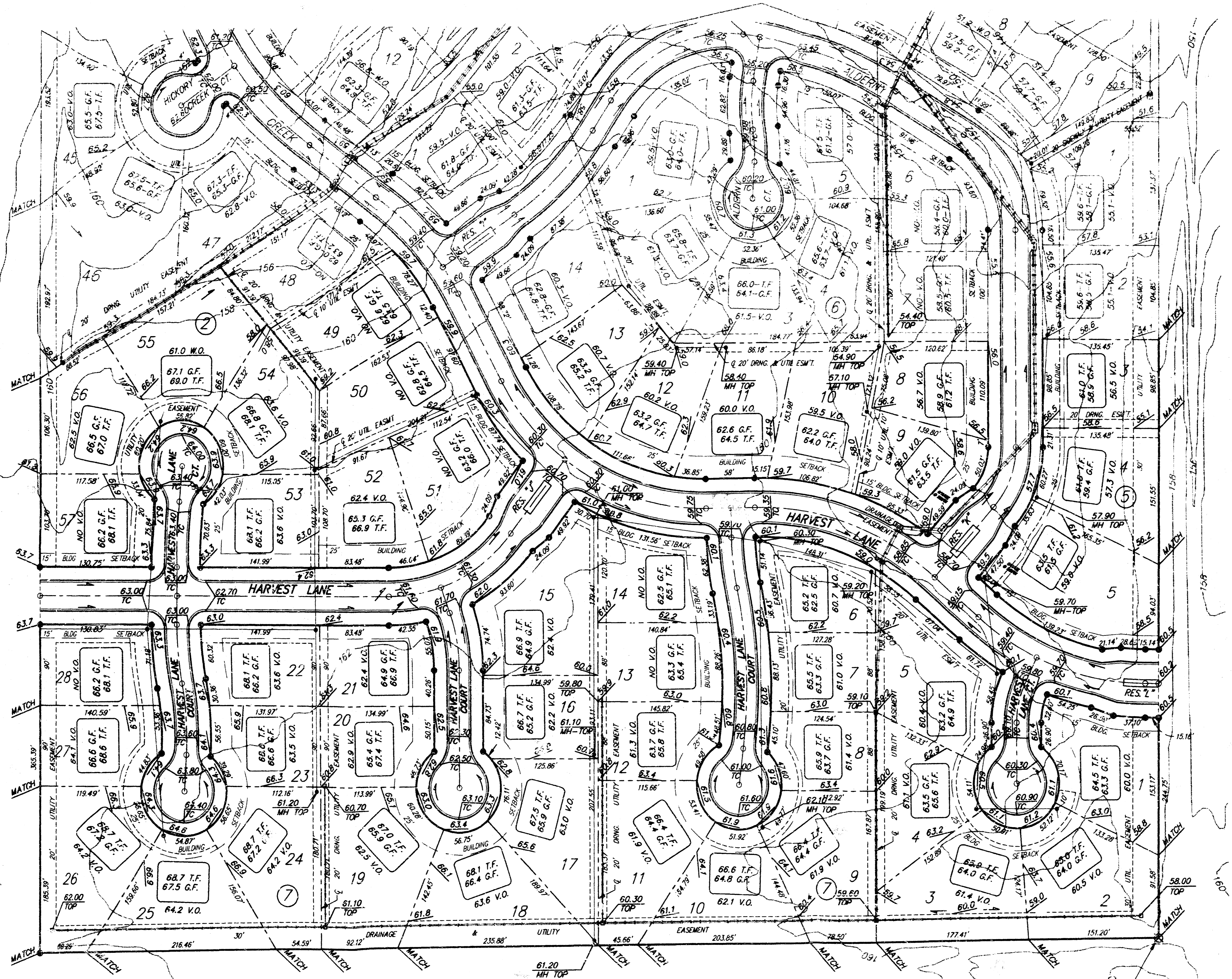
**HICKORY CREEK ESTATES**  
**LOT GRADING PLAN**

**BAUGHMAN COMPANY P.A.**  
ENGINEERING, SURVEYING, & PLANNING  
318-282-7271 • 315 S. 11th • WICHITA, KANSAS 67211

PROJECT NUMBER: \_\_\_\_\_

DESIGN	DRAWN	APPROVED	DATE	SCALE
			2-96	1"=60'

SHEET 8 OF 8

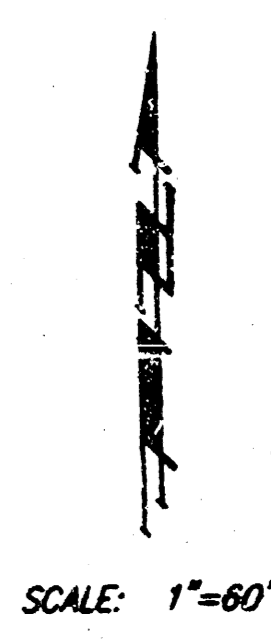


Typical View Out Section  
No Scale

V.O. indicates view out structures.  
V.O. can vary from 1' to 3.5' if noted.

W.O. indicates full walk out structures.

W.O.\* indicates special walk out condition  
where lot will drain at 2% min.,  
but special protective grading is required.  
Contact consultant for grading recommendation.



BENCHMARKS:  
600 NAIL IN HIGHLINE POLE 600' WEST  
AND 31' NORTH OF N 1/4 CORNER,  
SEC. 13, TWP. 27-S, R-2-W,  
ELEVATION = 1340.96 (M.S.L.)  
155.56 (CITY DATUM)  
\* CUT ON EAST CAP, NORTH SIDE  
OF BRIDGE 1350' EAST OF N 1/4 CORNER,  
SEC. 13, TWP. 27-S, R-2-W,  
ELEVATION = 1337.46 (M.S.L.)  
150.06 (CITY DATUM)

MINIMUM BUILDING PAD ELEVATIONS  
FOR LOWEST OPENING OF STRUCTURE

Lot & Block	City Datum	M.S.L.
11, 12, 13, 14, 21, 22, 27, Blk. 1		
1, 2, 3, 4, 5, 6, 12, Blk. 3	151.0	1338.4
1, 2, 3, 4, 5, 6, 7, 8, 9, Blk. 4		
1, Blk. 5		

REVISED 3--2-96

HICKORY CREEK ESTATES  
**LOT GRADING PLAN**

**BAUGHMAN COMPANY P.A.**  
ENGINEERING, SURVEYING, & PLANNING

314-282-7274 • 310 ELLIS • WICHITA, KANSAS 67211

PROJECT NUMBER: \_\_\_\_\_

DESIGN: \_\_\_\_\_ DRAWN: CCE/BAM APPROVED: \_\_\_\_\_ DATE: 1-19-96 SCALE: 1"=60'

SHEET 8 OF 8