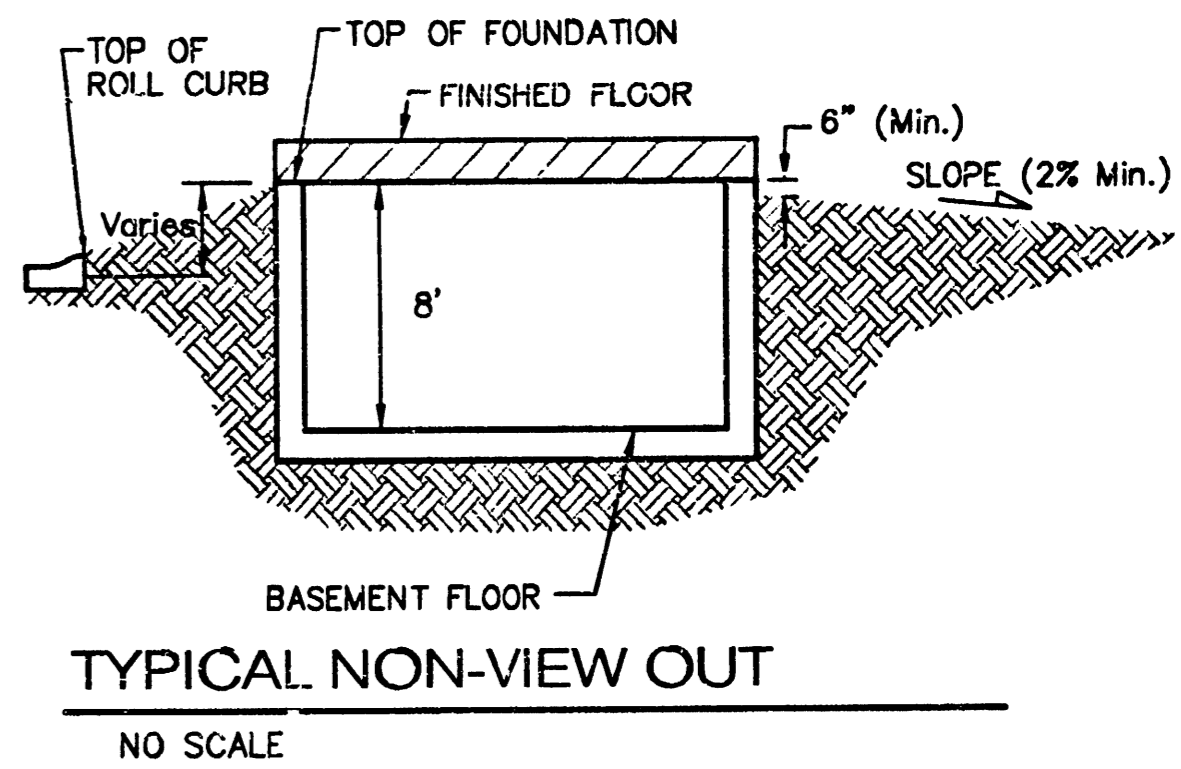
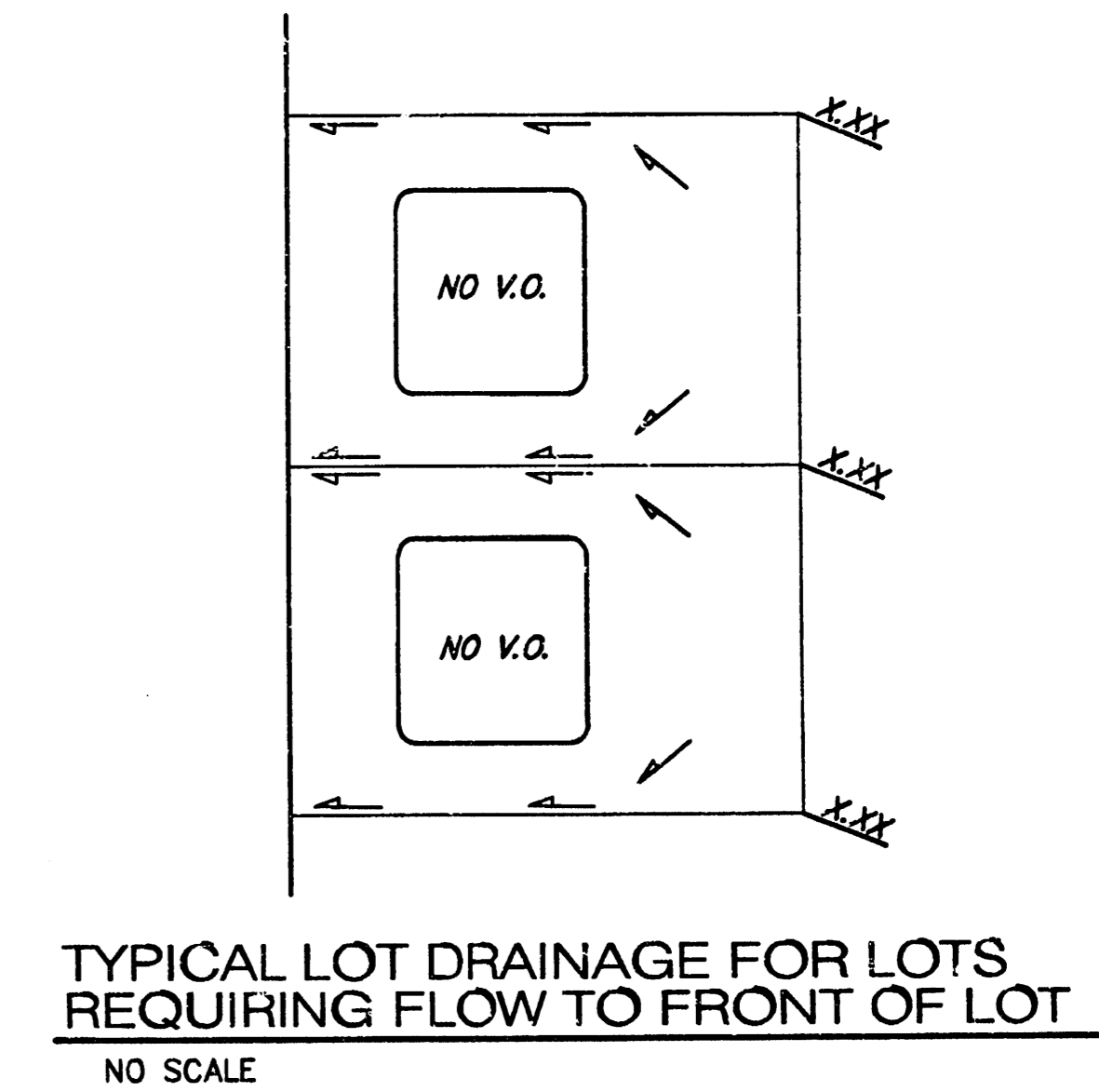
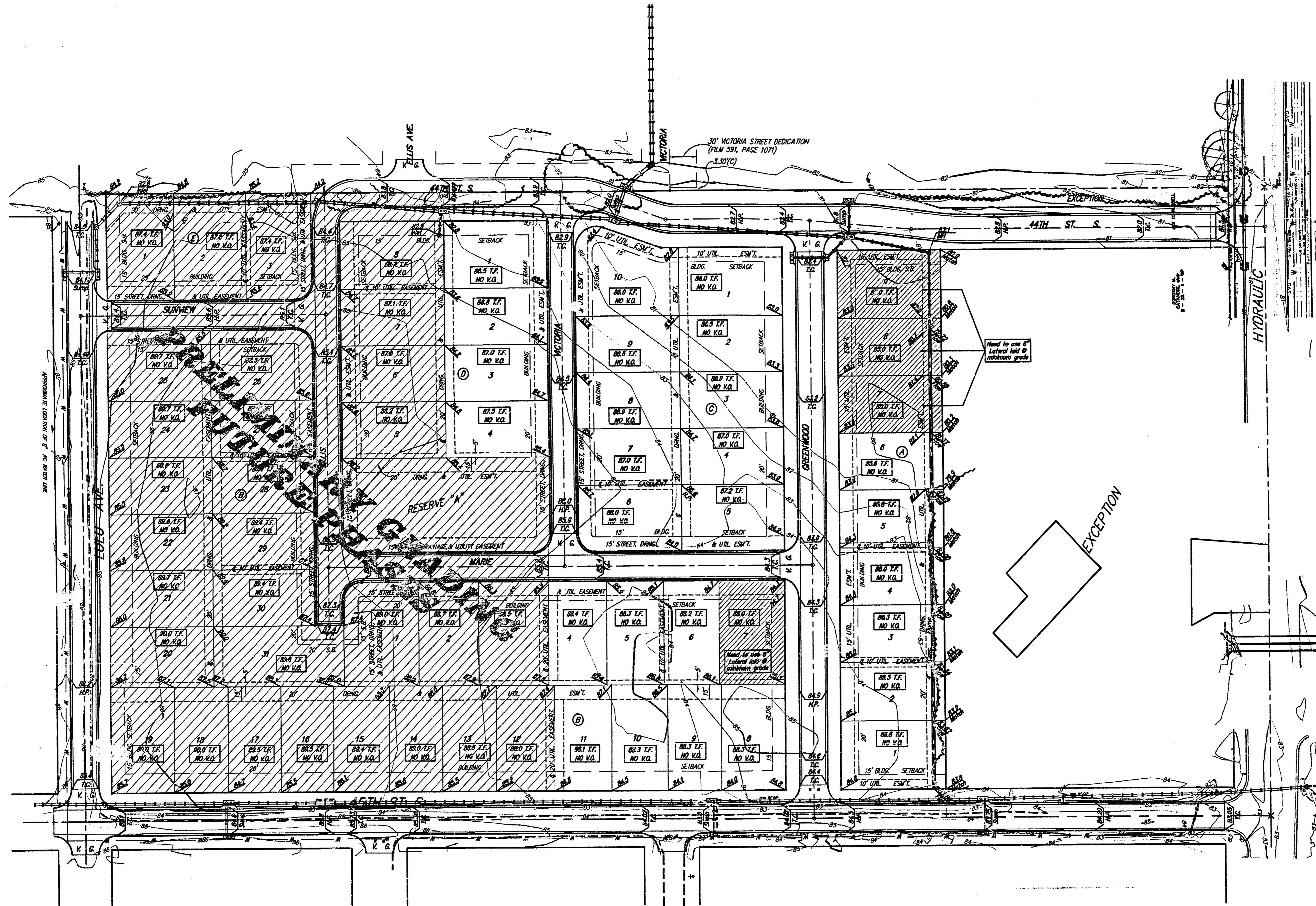


BENCHMARKS:
 "1" Top of curb, north return, Northwest corner of 43rd and Hydraulic.
 Elev. = 82.33
 Small Railroad Spike in West face of Power Pole, East of 44th and Hydraulic.
 Elev. = 82.34
 Railroad Spike in Light Pole, Southwest corner of 43rd and Victoria.
 Elev. = 84.74

SCALE: 1" = 60'
 • = IRON



NOTES:

- Notes:
- Proposed Top of Foundation Elevations Are Shown On Plans.
- Contractor to Set Finished Floor Elevations.
- All Street Elevations Shown on Plans Are for Top of Curb.
- This Grading Plan is Designed with Non-View Outs.
- Lot dimensions have been omitted on this plan, refer to the recorded plat for this information.

APPROVED
 DRAINAGE PLAN

DATE: 11/23/05

Update: 11-23-2005
 Updated: 09-30-2004

		Hidden Glen: Addition Grading Plan Wichita, Kansas	
<small>Baughman Company, P.A. 315 Elm St., Wichita, KS 67211 P: 316-262-2771 F: 316-262-0149 ENGINEERING SURVEYING PLANNING LANDSCAPE ARCHITECTURE</small>			
PROJECT NUMBER	DESIGNER	DRAWN	DATE
9-30-2004	MWS	MWS	09/29/04
REVISIONS	APPROVED	SCALE	NOTED
11-23-2005	MWS	Noted	
Added Item #11, Block B			
			1 OF 1

FL:Grade (HiddenGlen)grade-new.dwg