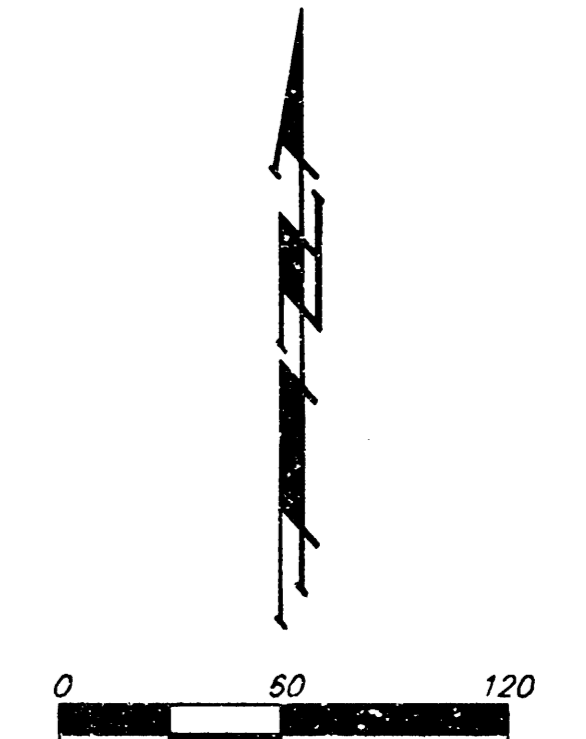


DRAINAGE PLAN HIDDEN GLEN AN ADDITION TO WICHITA, SEDGWICK COUNTY, KANSAS

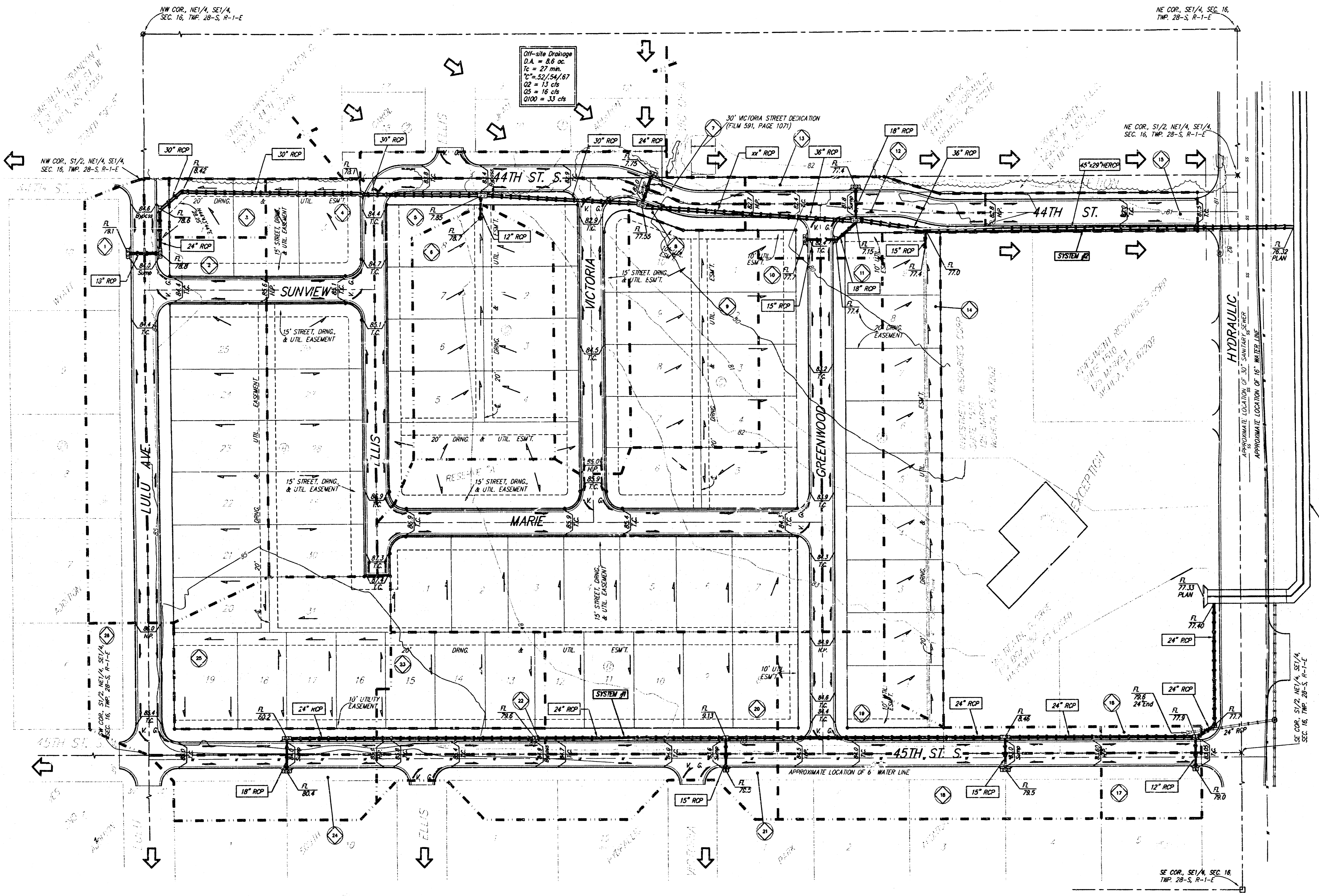


- = #4 REBAR W/ "BAUGHMAN" CAP (SET)
- = 3/4" IRON IN TIMBER (FOUND)
- ⊗ = "P-K" NAL (FOUND)
- = 1/2" IRON (FOUND)
- ⊙ = 3/4" IRON (FOUND)
- △ = "P-K" NAL AND WASHER (FOUND)

BENCHMARK:
City of Wichita benchmark, SE corner of intersection of Hydraulic and 43rd St. South, 25.50' east and 35' south of centerline.
Elev. = 84.99 City Datum

Hidden Glen Addition -- Rational Method - Q = c1a - tc = 15 min.

Basin	Area	C ₁	C ₂	C ₁₀₀	Q ₁ (cfs)	Q ₂ (cfs)	Q ₁₀₀ (cfs)
1	0.86	0.52	0.54	0.67	1.7	2.1	4.2
2	1.46	0.52	0.54	0.67	2.9	3.6	7.2
3	0.18	0.52	0.54	0.67	0.4	0.4	0.9
4	1.38	0.52	0.54	0.67	2.7	3.4	6.8
5	0.49	0.52	0.54	0.67	1.0	1.2	2.4
6	1.07	0.52	0.54	0.67	2.1	2.6	5.3
7	0.54	0.52	0.54	0.67	0.7	0.8	1.7
8	0.90	0.52	0.54	0.67	1.8	2.2	4.4
9	0.92	0.52	0.54	0.67	1.8	2.3	4.5
10	2.80	0.52	0.54	0.67	5.6	6.9	13.8
11	0.74	0.52	0.54	0.67	1.5	1.8	3.7
12	0.30	0.52	0.54	0.67	0.6	0.7	1.5
13	0.18	0.52	0.54	0.67	0.4	0.4	0.9
14	0.89	0.52	0.54	0.67	1.8	2.2	4.4
15	0.26	0.52	0.54	0.67	0.5	0.6	1.3
16	0.08	0.52	0.54	0.67	0.2	0.2	0.4
17	0.21	0.52	0.54	0.67	0.4	0.5	1.0
18	0.67	0.52	0.54	0.67	1.3	1.6	3.3
19	0.63	0.52	0.54	0.67	1.3	1.6	3.1
20	0.90	0.52	0.54	0.67	1.8	2.2	4.4
21	0.62	0.52	0.54	0.67	1.2	1.5	3.1
22	0.14	0.52	0.54	0.67	0.3	0.3	0.7
23	0.49	0.52	0.54	0.67	1.0	1.2	2.4
24	0.43	0.52	0.54	0.67	0.9	1.1	2.1
25	0.96	0.52	0.54	0.67	1.9	2.4	4.7
26	0.51	0.52	0.54	0.67	1.0	1.3	2.5



Exbt. (2)-7x3' RCB

16 JULY 2003

BAUGHMAN COMPANY P.A.
ENGINEERING, SURVEYING, & PLANNING
316-262-7271 • 315 7LLIS • WICHITA, KANSAS 67211
F:\WORK\PROJECTS\HIDDEN GLEN\HIDDEN GLEN.DWG