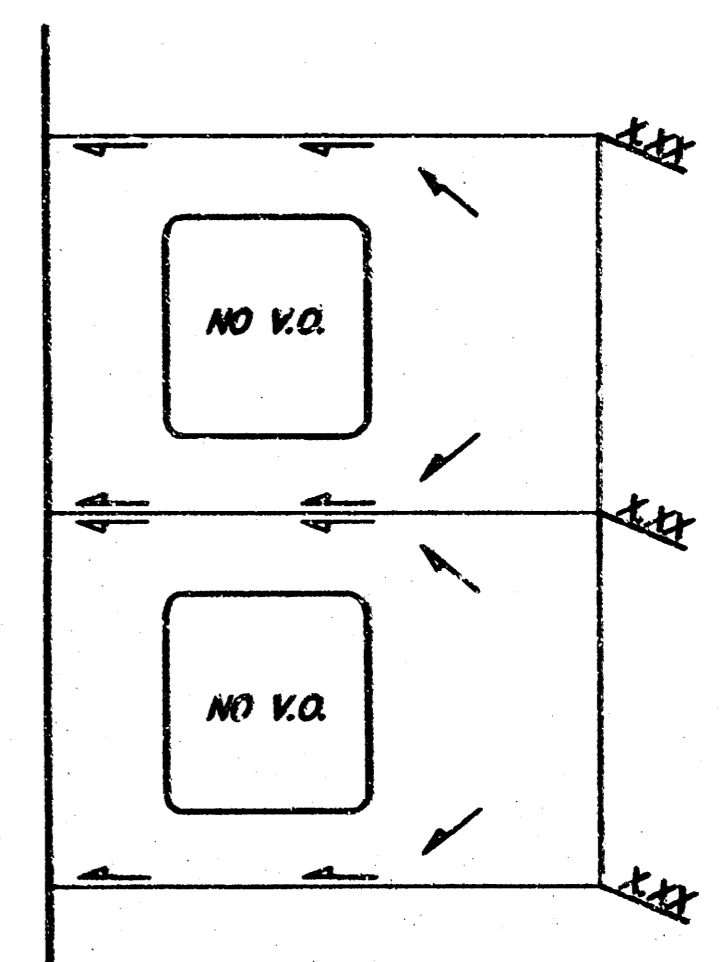
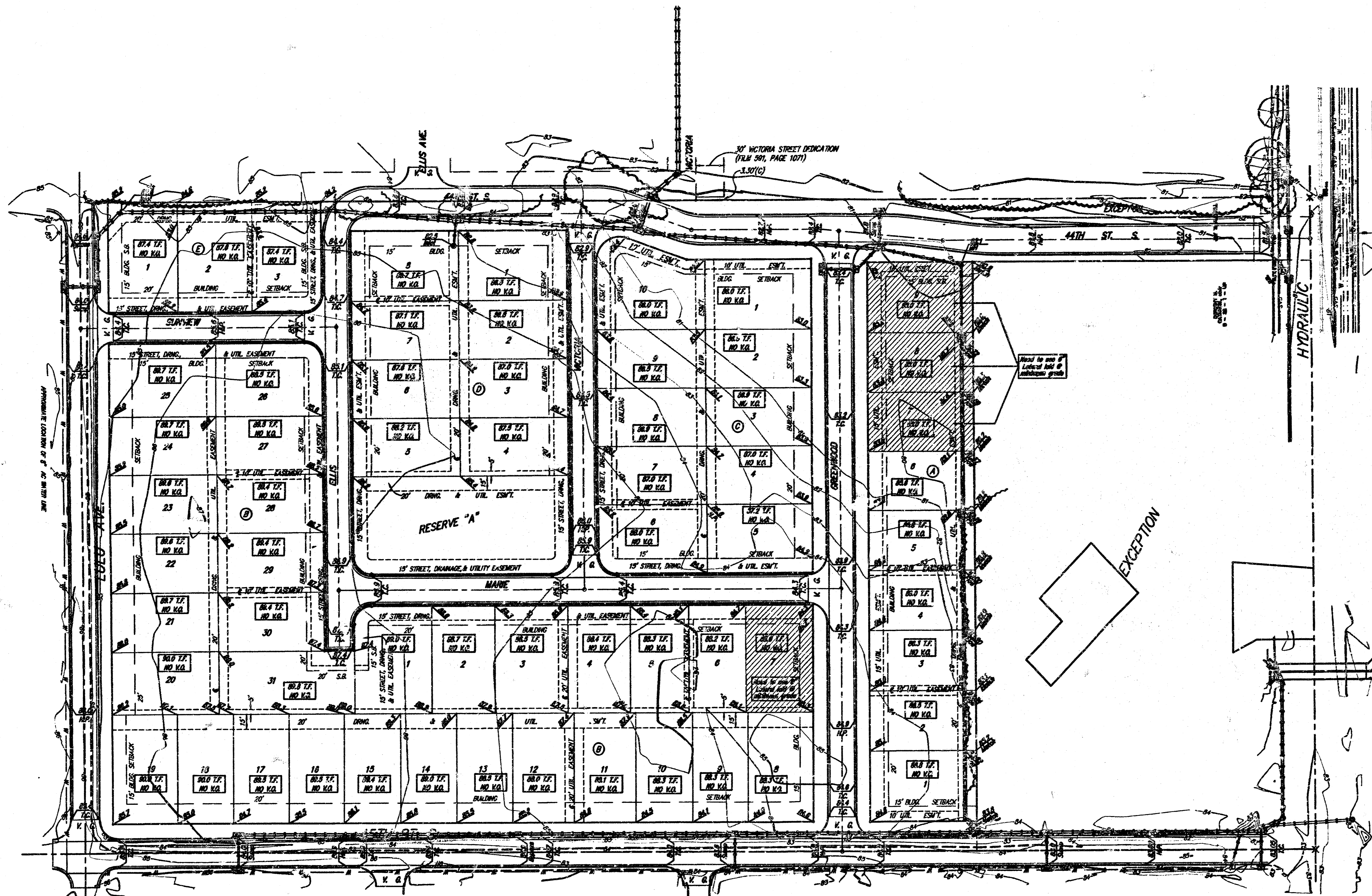
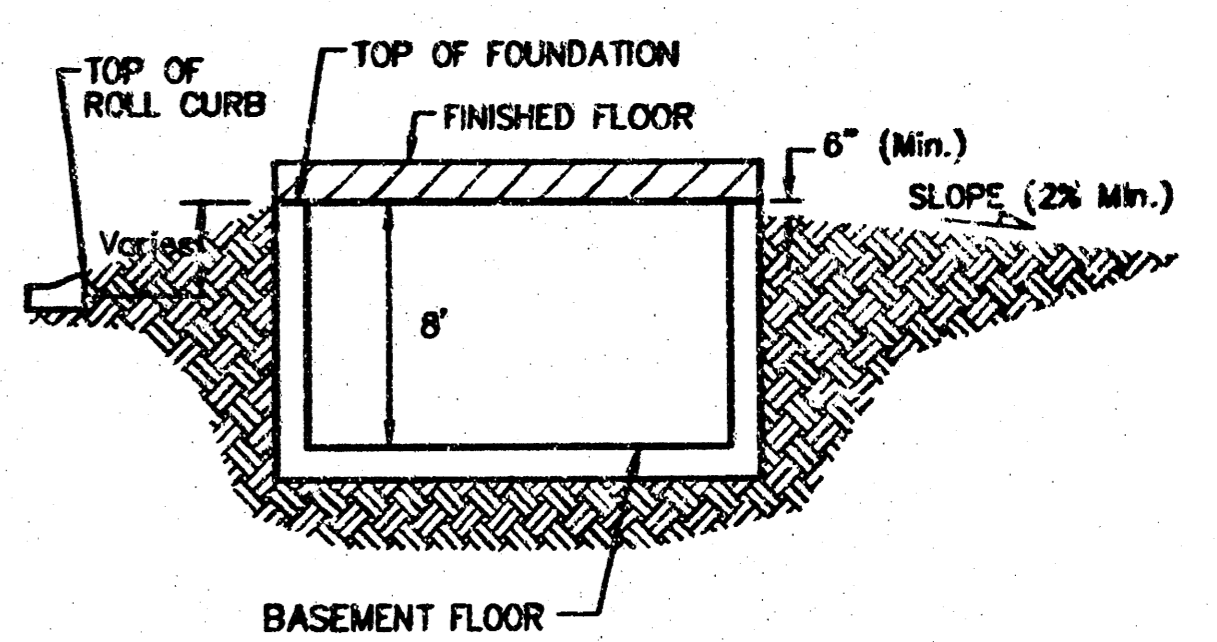


GENERAL NOTES:
 1. Top of curb, north return, Northwest corner of 43rd and Hydraulic.
 Elev. = 82.33
 Small Railroad Spike in West face of Power Pole East of 44th and Hydraulic.
 Elev. = 82.04
 Railroad Spike in Light Pole, Southwest corner of 43th and Victoria.
 Elev. = 84.74

SCALE: 1" = 60'
 • = IRON



TYPICAL LOT DRAINAGE FOR LOTS REQUIRING FLOW TO FRONT OF LOT
 NO SCALE



TYPICAL NON-VIEW OUT
 NO SCALE

NOTES:

- Notes:
 Proposed Top of Foundation Elevations Are Shown On Plans.
 Contractor to Set Finished Floor Elevations.
 All Street Elevations Shown on Plans Are for Top of Curb.
 This Grading Plan is Designed with Non-View Outs.
 Lot dimensions have been omitted on this plan, refer to the recorded plat for this information.

**APPROVED
 DRAINAGE PLAN**

Updated: 09-30-2004 **REVISED**

		Hidden Glen Addition Grading Plan Wichita, Kansas	
<small>Baughman Company, P.A. 3150 N. W. 10th St., Suite 201, Wichita, KS 67211 Phone: 781-7771 Fax: 781-7771 PROFESSIONAL ENGINEERING SURVEYING PLANNING LANDSCAPE ARCHITECTURE</small>			
PROJECT NUMBER	DESIGN	DRAWN	
	MWS	MWS	
REVISIONS	APPROVED	DATE	
		09/29/04	
		SCALE	
		None	
		SHEET	1 of 1
<small>EV:Grade\HiddenGlen\grade.dwg</small>			