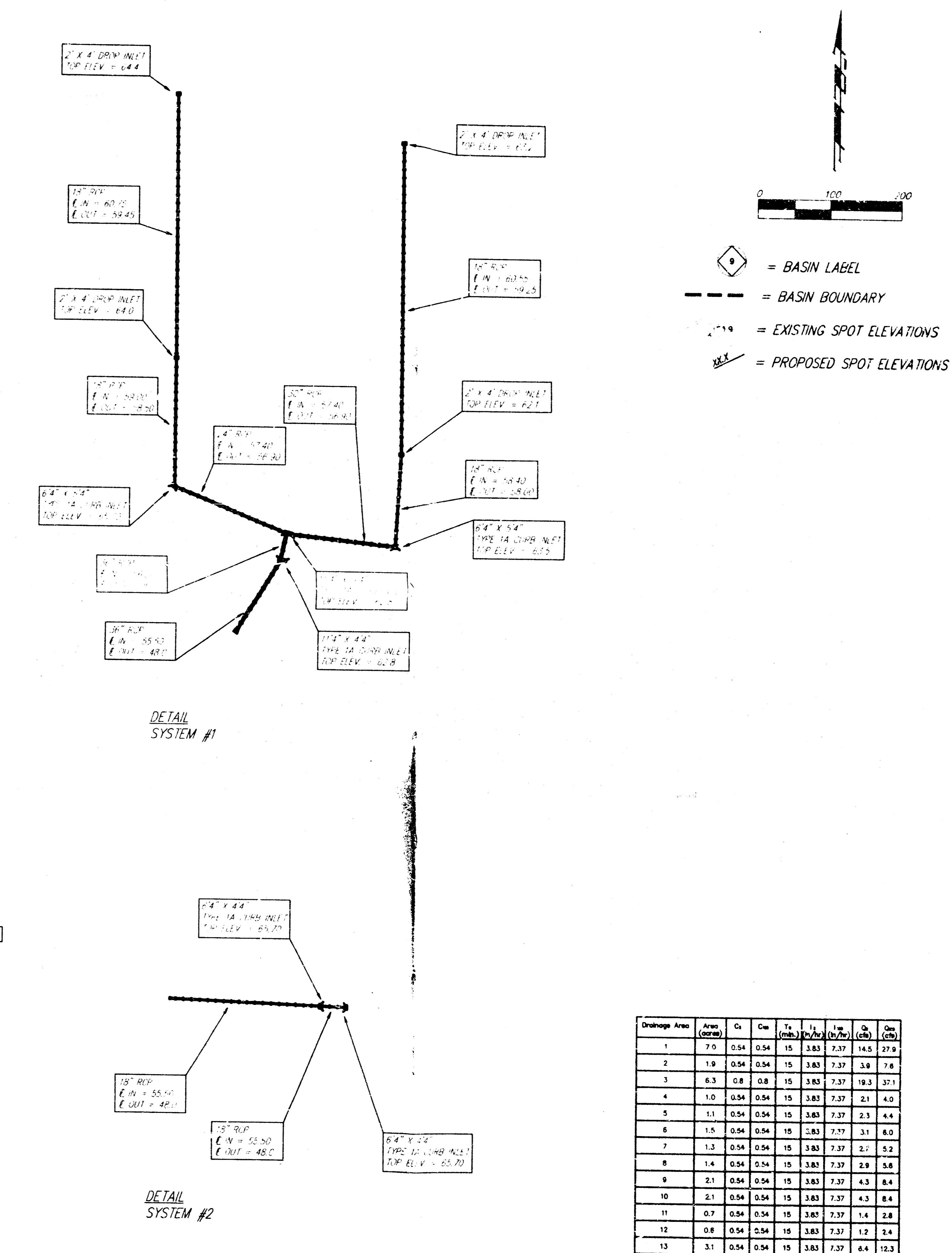
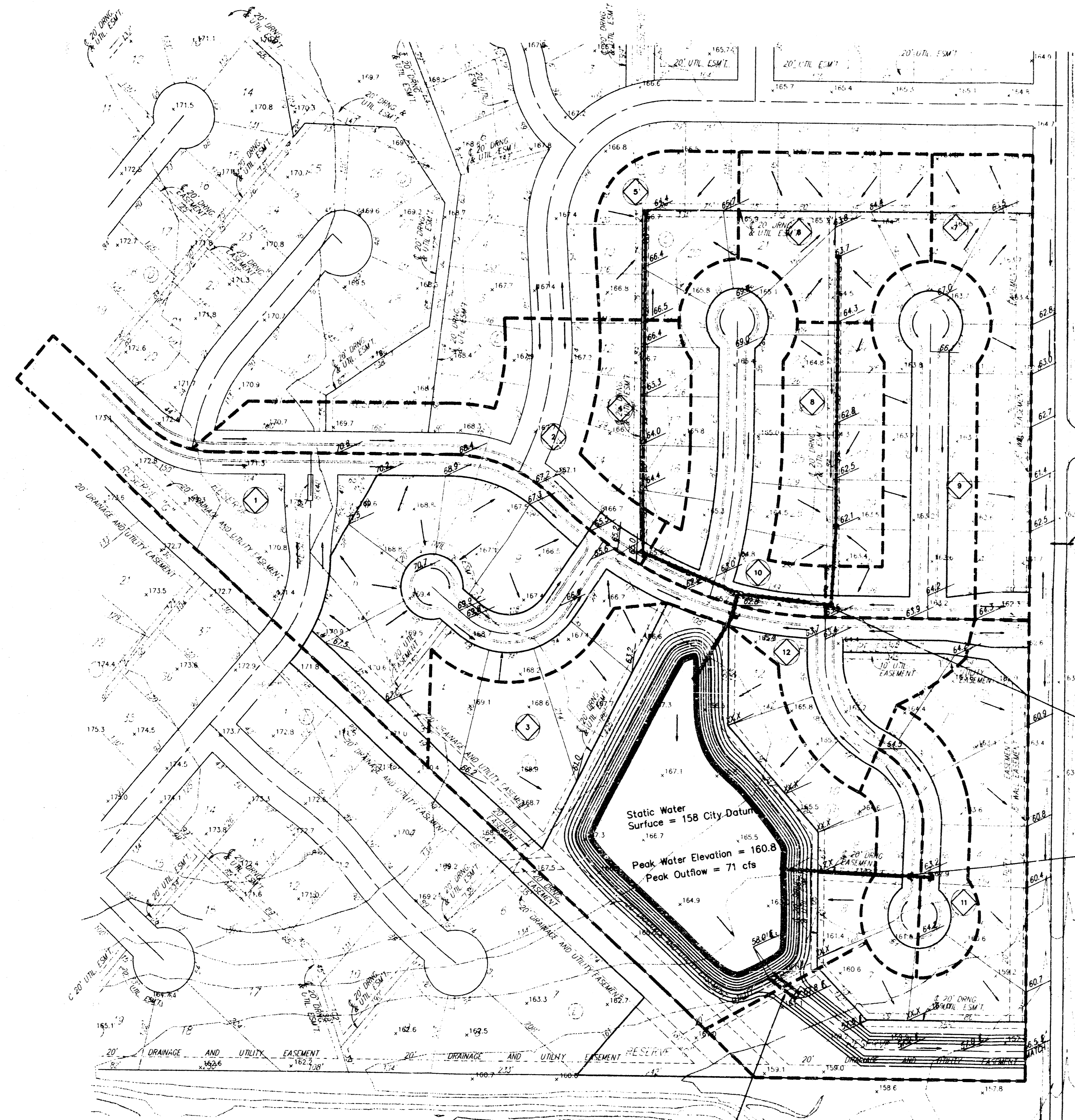


DRAINAGE PLAN HIGHLAND SPRINGS ADDITION WICHITA, SEDGWICK COUNTY, KANSAS



Drainage Area	Area (Acres)	Cs	Cm	Ts (min)	Ls (ft)	Qp (cfs)	Qm (cfs)	Qs (cfs)
1	7.0	0.54	0.54	15	3.83	7.37	14.5	27.9
2	1.9	0.54	0.54	15	3.83	7.37	3.8	7.6
3	8.3	0.8	0.8	15	3.83	7.37	19.3	37.1
4	1.0	0.54	0.54	15	3.83	7.37	2.1	4.0
5	1.1	0.54	0.54	15	3.83	7.37	2.3	4.4
6	1.5	0.54	0.54	15	3.83	7.37	3.1	6.0
7	1.3	0.54	0.54	15	3.83	7.37	2.7	5.2
8	1.4	0.54	0.54	15	3.83	7.37	2.8	5.4
9	2.1	0.54	0.54	15	3.83	7.37	4.3	8.4
10	2.1	0.54	0.54	15	3.83	7.37	4.3	8.4
11	0.7	0.54	0.54	15	3.83	7.37	1.4	2.8
12	0.8	0.54	0.54	15	3.83	7.37	1.2	2.4
13	3.1	0.54	0.54	15	3.83	7.37	6.4	12.3

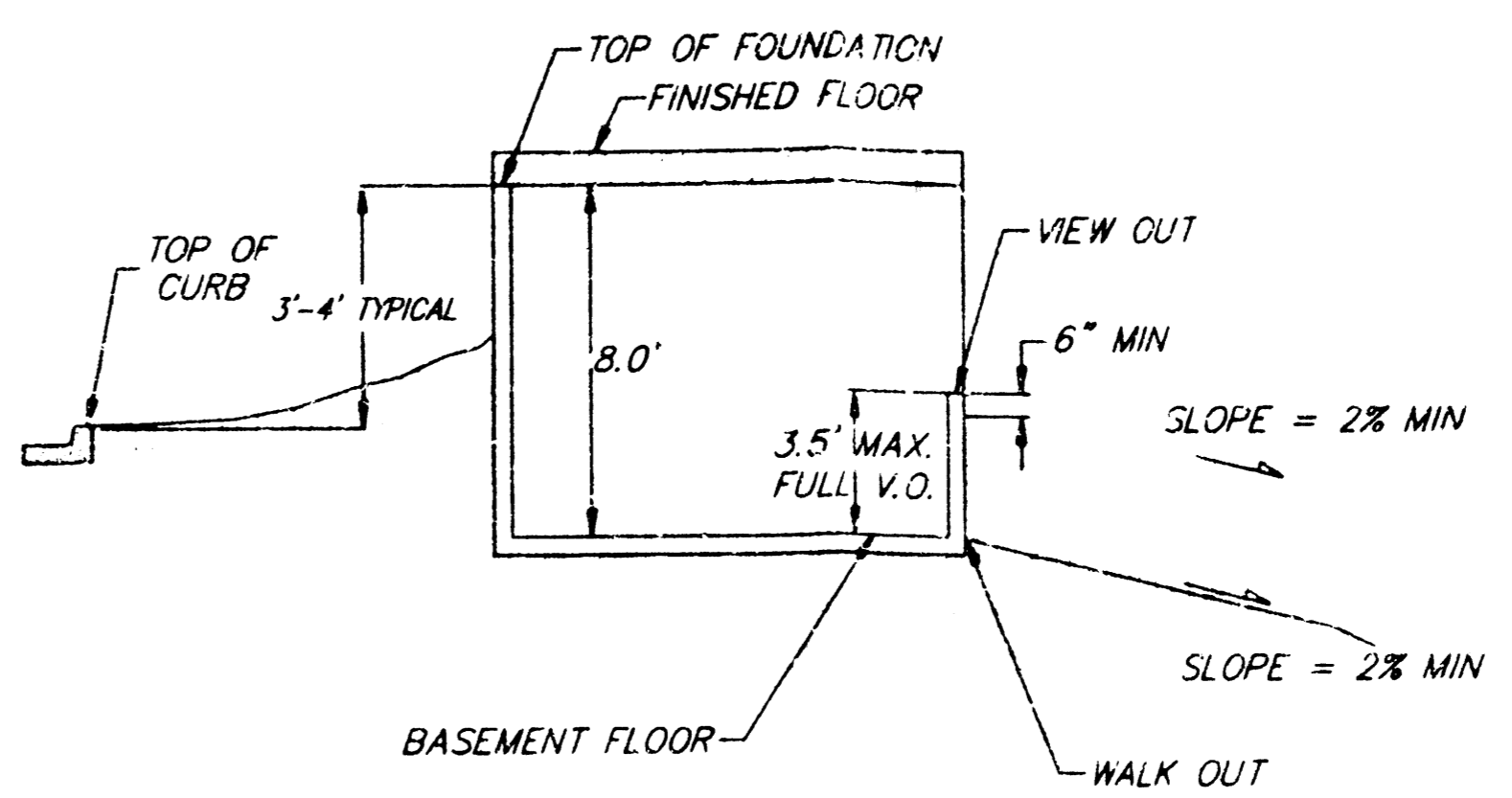
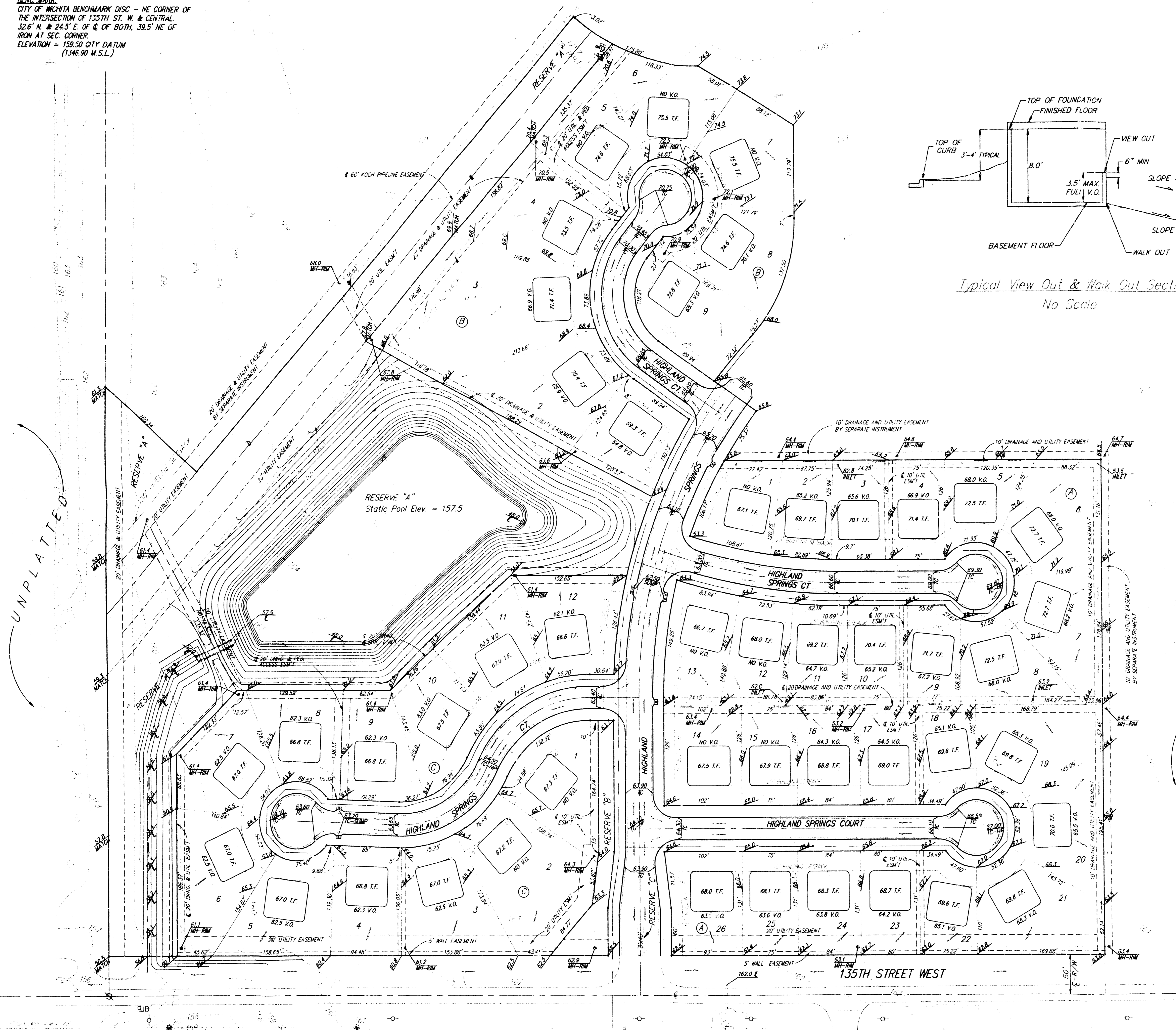
PROPOSED BY: BAUGHMAN COMPANY, 415 MAIN ST., SUITE 100, LAWRENCE, KS 66044, PHONE (785) 235-4500

NOTE: The proposed drainage plan provided herein is a generally defined plan to follow for design. It is recognized and assumed that upon the final design of street and storm sewer improvements within this plat that the designer will modify or alter the general drainage plan as necessary in order to implement the installation of the improvements to obtain the most economical design and construction possible.

JUNE 19, 1997
BAUGHMAN COMPANY P.A.
ENGINEERING, SURVEYING, & PLANNING
316-262-7471 • 316-262-7472 • WICHITA, KANSAS 67211

BENCHMARK:
 CITY OF WICHITA BENCHMARK DISC - NE CORNER OF
 THE INTERSECTION OF 135TH ST. W. & CENTRAL.
 32.6' N. & 24.5' E. OF & OF BOTH 39.5' NE OF
 IRON AT SEC. CORNER.
 ELEVATION = 159.50 CITY DATUM
 (1346.90 M.S.L.)

SCALE:
 1" = 60'
 - - IRON



NOTES:

Proposed Minimum Top Of Foundation Elevations Are Shown On Plans. Contractor to Set Finished Floor Elevations.

All Street Elevations Shown on Plans Are for Top of Curb (Full-Height).

This Grading Plan is Designed with View-Out & Walk-Out Basements. Elevations Shown at Rear of House (XX.X V.O.) & (XX.X W.O.) Are for Minimum Opening.

V.O. Indicates View-Out Structure
 W.O. Indicated Full Walk-Out Structure

MINIMUM BUILDING PAD ELEVATION FOR LOWEST OPENING TO STRUCTURE		
BLOCK	LOTS	MINIMUM ELEVATION (PER CITY ORDINANCE)
B	1,2,3	162.0
C	4,5,6,7,8,9,10,11,12	162.0

Revised 3-16-98 DMV

**HIGHLAND SPRINGS ADDITION
 LOT GRADING PLAN**

BAUGHMAN COMPANY P. A.
 ENGINEERING, SURVEYING, & PLANNING
 216 - 264 - 7271 • WICHITA, KANSAS 67211

PROJECT NUMBER: _____

DESIGN: BCF/BLG DRAWN: _____ APPROVED: _____ DATE: 5/97 SCALE: NOTED

SHEET 1 OF 1