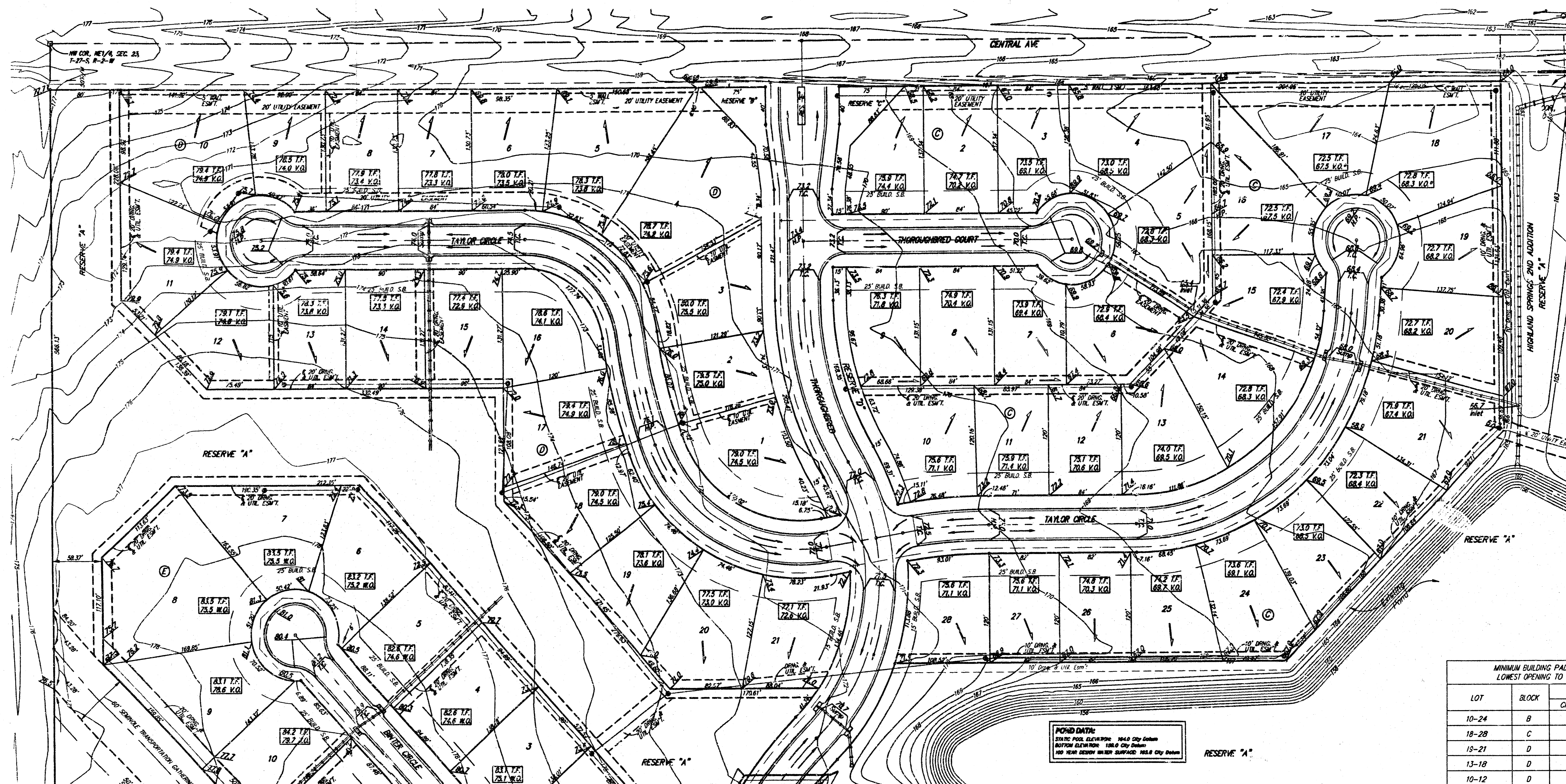
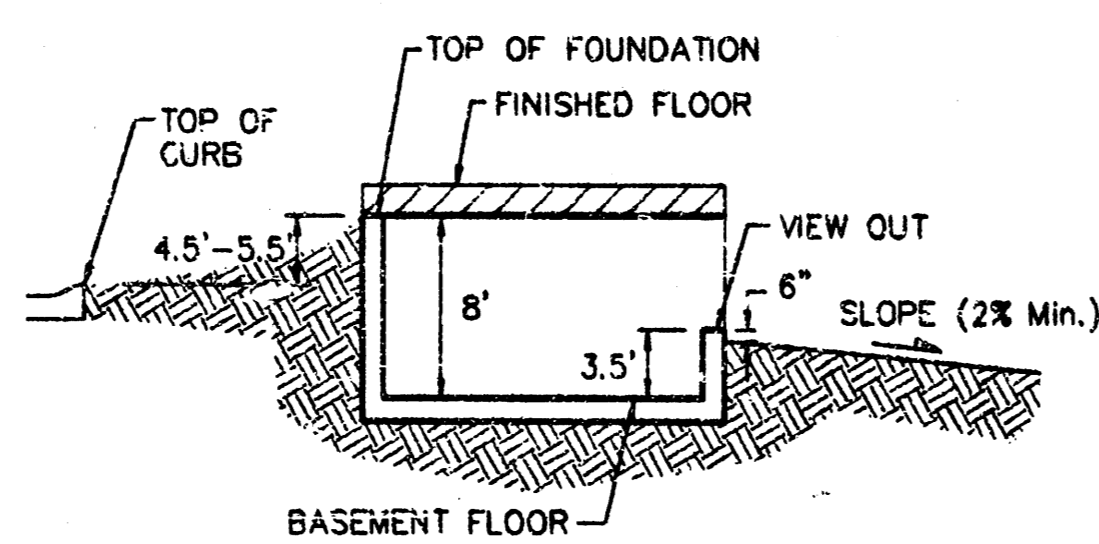


Scale: 1" = 60'
 = Iron



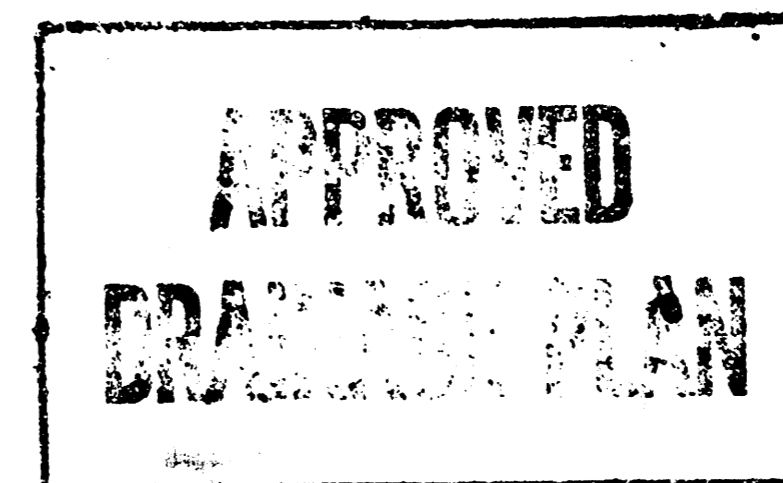
POUND DATA:
 200 LBS. POUD. ELEV. 99.00' 100' City Datum
 100 LBS. POUD. ELEV. 100.00' City Datum
 100 LBS. POUD. ELEV. 100.00' City Datum



TYPICAL VIEW OUT DETAIL
 NO SCALE

NOTES:
 Proposed Top of Foundation Elevations Are Shown On Plans. Contractor to Set Finished Floor Elevations.
 All Street Elevations Shown on Plans Are for Top of Curb (Full-Height).
 This Grading Plan is Designed with View-Outs. Elevations Shown as (XX.X V.O.)

BENCHMARKS:
 135th St. W. & Central
 City of Wichita Benchmark
 DISC - NE Cor. Intersection,
 32.6' N. & 24.5' E. of C. both
 39.5' NE of Iron at Sec. Cr.
 Elev. = 159.50 (City Datum)
 Brass disc in curb - east side
 of Aksarben adjacent to fire
 hydrant 5' S. of SW Cor.
 Lot 8, Block A, Highland
 Springs 3rd Addition.
 Elev. = 170.00 (City Datum)



MINIMUM BUILDING PAD ELEVATIONS FOR LOWEST OPENING TO THE STRUCTURES			
LOT	BLOCK	ELEVATION	
		CITY DATUM	NGVD 29
10-24	B	165.0	1,352.4
18-28	C	165.0	1,352.4
15-21	D	166.0	1,353.4
13-18	D	167.0	1,354.4
10-12	D	168.0	1,355.4
1-4	E	166.0	1,353.4
5-7	E	167.0	1,354.4
8	E	168.0	1,355.4
9,10	E	169.0	1,356.4
11,12	F	169.0	1,356.4

HIGHLAND SPRINGS 3RD

GRADING PLAN
 Highland Springs 3rd Addition
 City of Wichita

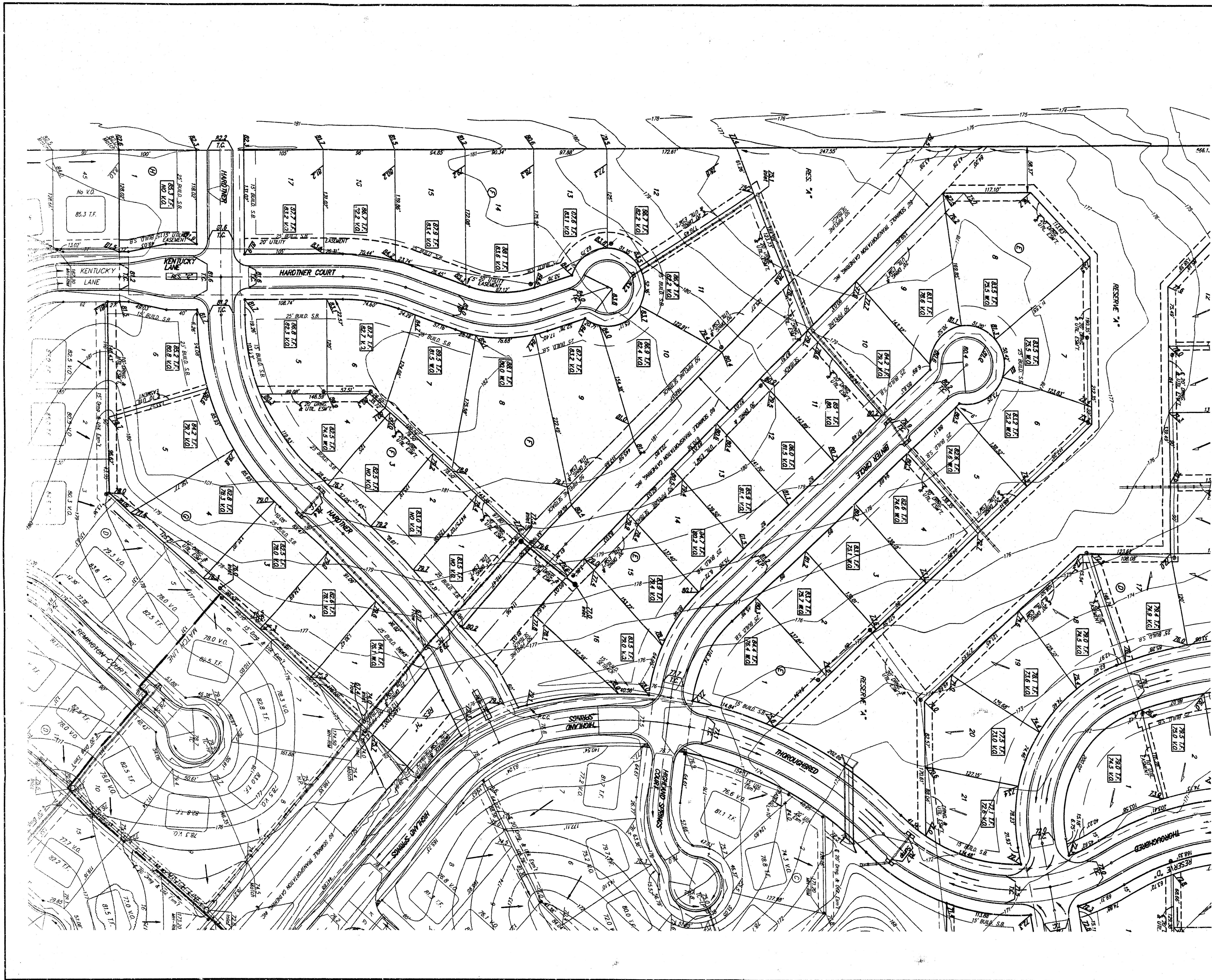
Baughman Company, P.A., 315 S.W. 10th, Suite 100, Wichita, KS 67202
 ENGINEERING | SURVEYING | PLANNING | LANDSCAPE ARCHITECTURE

REVISIONS: 6/15/04 JAK
 Number One to View Out, Lot 24, Block C

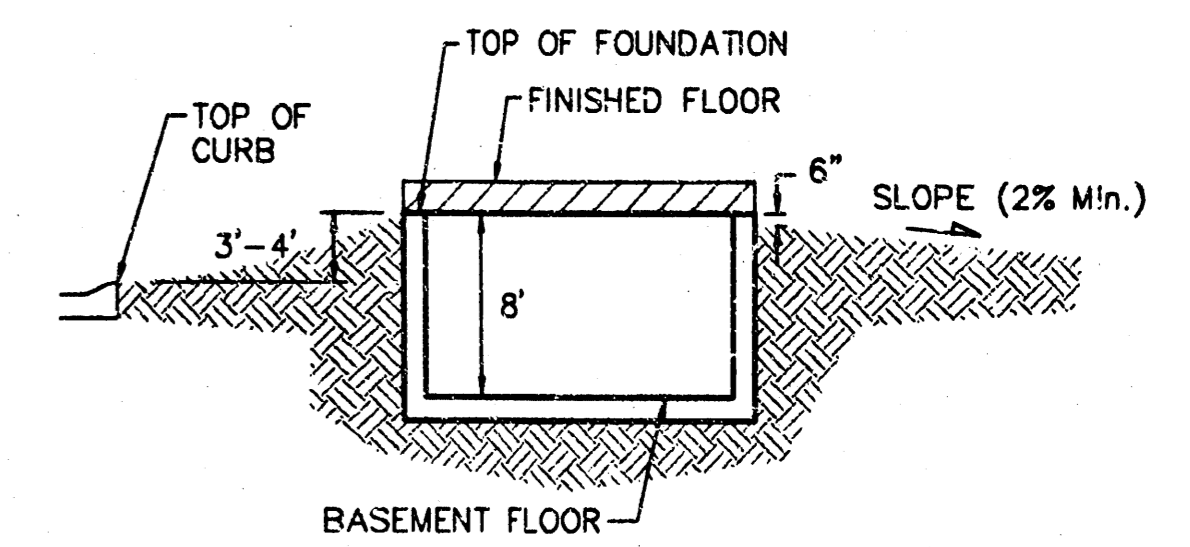
DESIGN: BLE/BLG
 DRAWN: BLG
 APPROVED: DATE: 17MAY02

SCALE: NOTED
 SHEET: 1 OF 3

F:\Creds\Highland\hIGHLAND3\grade.dwg

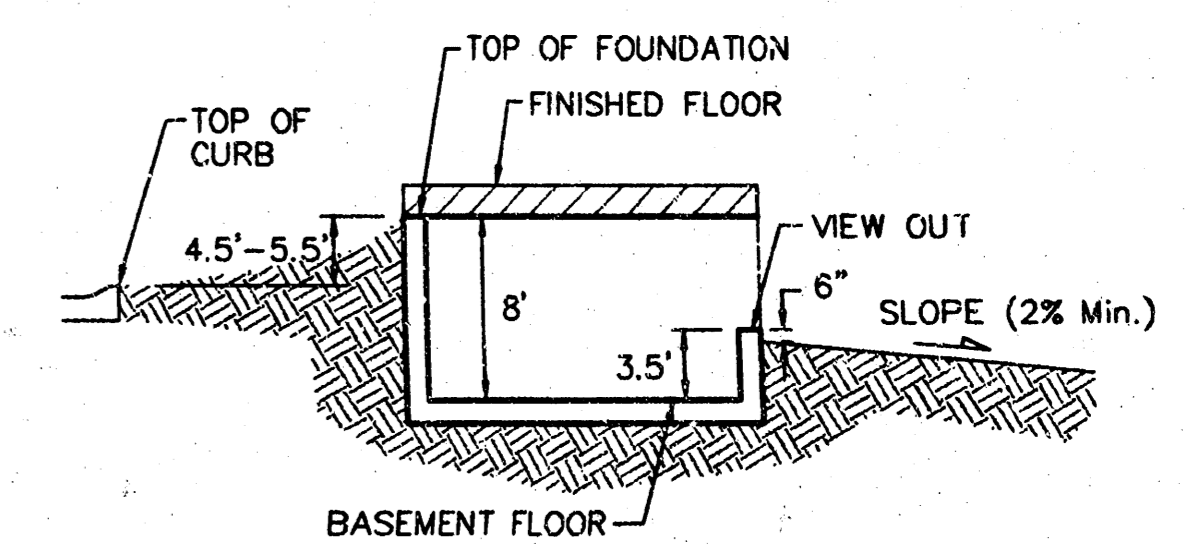


Scale:
1" = 60'
• = Iron



TYPICAL NON-VIEW OUT DETAIL

NO SCALE



TYPICAL VIEW OUT DETAIL

NO SCALE

NOTES:

Propose: Top of Foundation Elevations Are Shown On Plans. Contractor to Set Finished Floor Elevations.

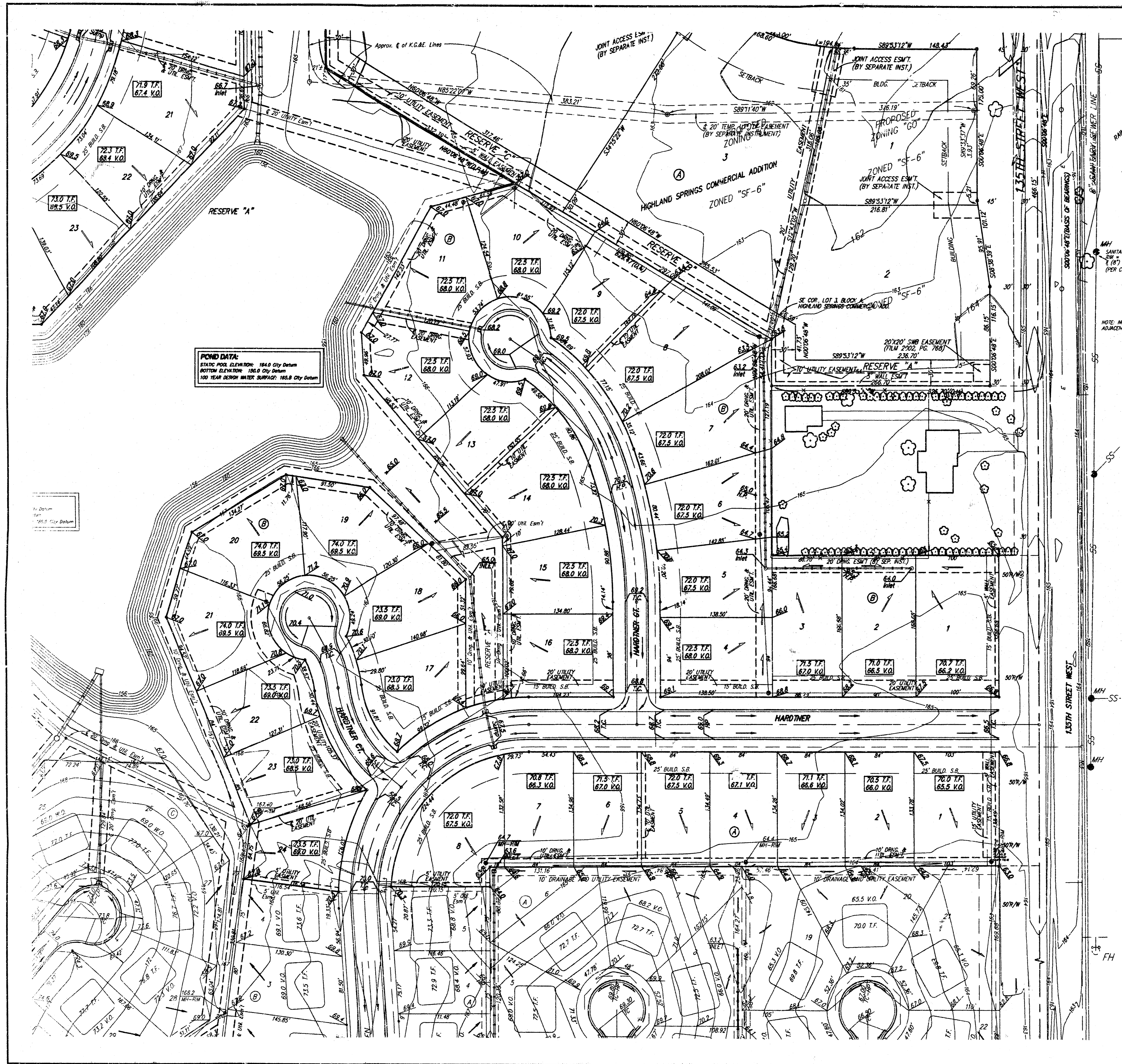
All Street Elevations Shown on Plans Are for Top of Curb (Full-Height).

This Grading Plan is Designed with View-Outs. Elevations Shown as (XX.X V.O.).

Lot dimensions have been omitted on this plan, refer to the recorded plot for this information.

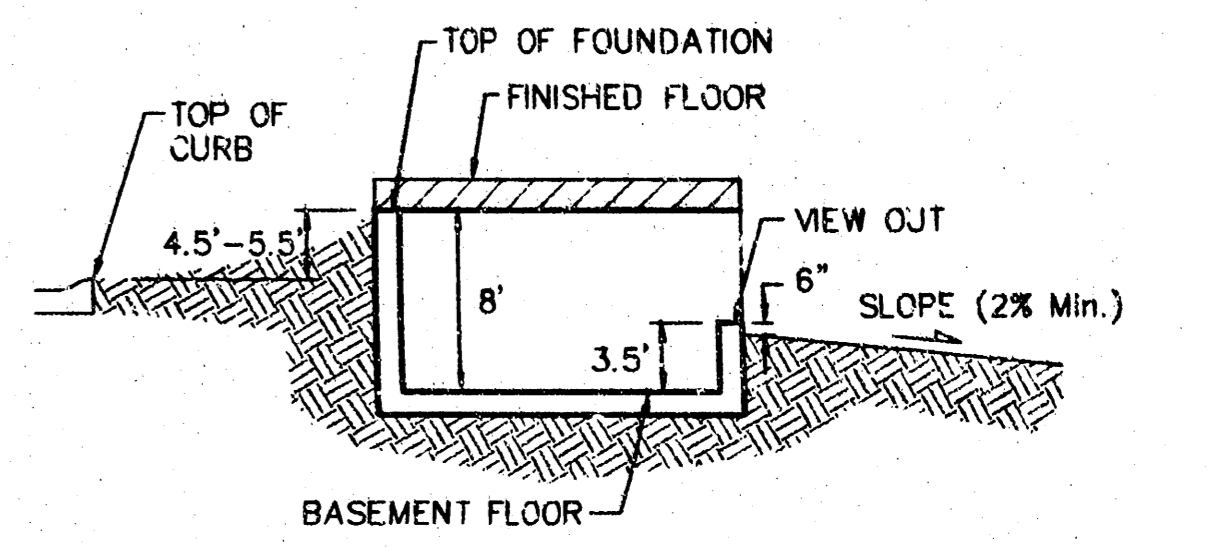
BENCHMARK:
City of Wichita benchmark disk 32.6' N and 24.5' E of intersection of 135th St. W. and Central, 39.5' NE of iron at section corner.
Elev. = 159.50 City Datum

		Highland Springs 3rd Addition GRADING PLAN City of Wichita	
<small>Baughman Company, P.A. 315 5th & Walnut, KS 67211 P 316-265-3111 F 316-265-3149 ENGINEERING SURVEYING PLANNING LANDSCAPE ARCHITECTURE</small>			
REVISIONS 7/23/04 JAK <small>Number One in Your Own, Low 1016, Book 2 and Low 1617, Book 2</small>	DESIGN BLP/BLG	DRAWN BLG	DATE 17MAY02
SCALE NOTED		SHEET 2 OF 3	
<small>EV:\Crack\Highland\highland3\grade.dwg</small>			



POND DATA:
 STAINING POOL ELEVATION: 164.0 City Datum
 BOTTOM ELEVATION: 162.4 City Datum
 100 YEAR DESIGN WATER SURFACE: 165.8 City Datum

Scale: 1" = 60'
 • = Iron



TYPICAL VIEW OUT DETAIL
 NO SCALE

NOTES:
 Proposed Top of Foundation Elevations Are Shown on Plans. Contractor to Set Finished Floor Elevations.
 All Street Elevations Shown on Plans Are for Top of Curb (Full-Height).
 This Grading Plan is Designed with View-Outs. Elevations Shown as (XX.X V.O.)
 Lot dimensions have been omitted on this plan, refer to the recorded plat for this information.
 Benchmarks:
 135th St. W. & Central
 City of Wichita Benchmark DISC - NE Cor. Intersection, 32.6' N. & 24.5' E. of C both, 39.5' NE of Iron at Sec. Cor.
 Elev. = 159.50 (City Datum)
 Brass disc in curb - east side of Aksarben adjacent to fire hydrant 5'± South of SW Cor. Lot 8, Block A, Highland Springs 3rd Addition.
 Elev. = 170.00 (City Datum)

		Highland Springs 3rd Addition	
		GRADING PLAN	
City of Wichita		City of Wichita	
<small>Baughman Company, P.A., 315 8th St. S., Wichita, KS 67211 P 316-263-7271 F 316-263-5149 ENGINEERING SURVEYING PLANNING LANDSCAPE ARCHITECTURE</small>			
REVISIONS 4/25/04 5/07/04 <small>Show pond data and street grade from 4-24-04, Block B Review and date from 1-4-04, Block A</small>	IAK/NBW IAK/NBW	DISCUS BLE/BLG APPROVED	DRAWN BLEG DATE 17MAY02
SCALE NOTED		SHEET	
		3 OF 3	
<small>F:\Cred\Highland\Highland01\grading.dwg</small>			