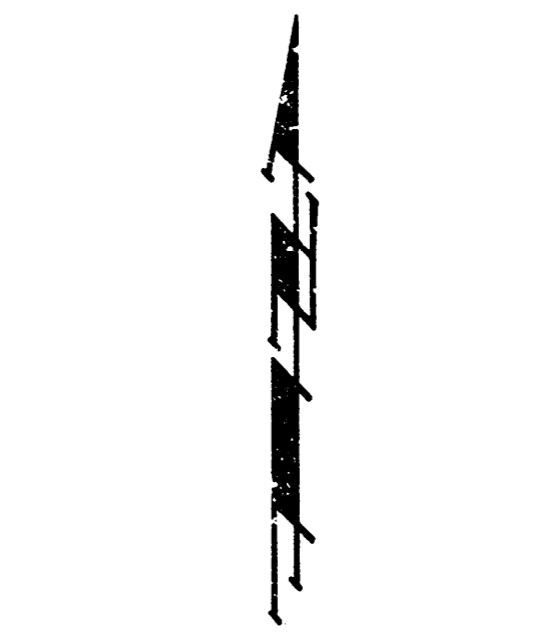
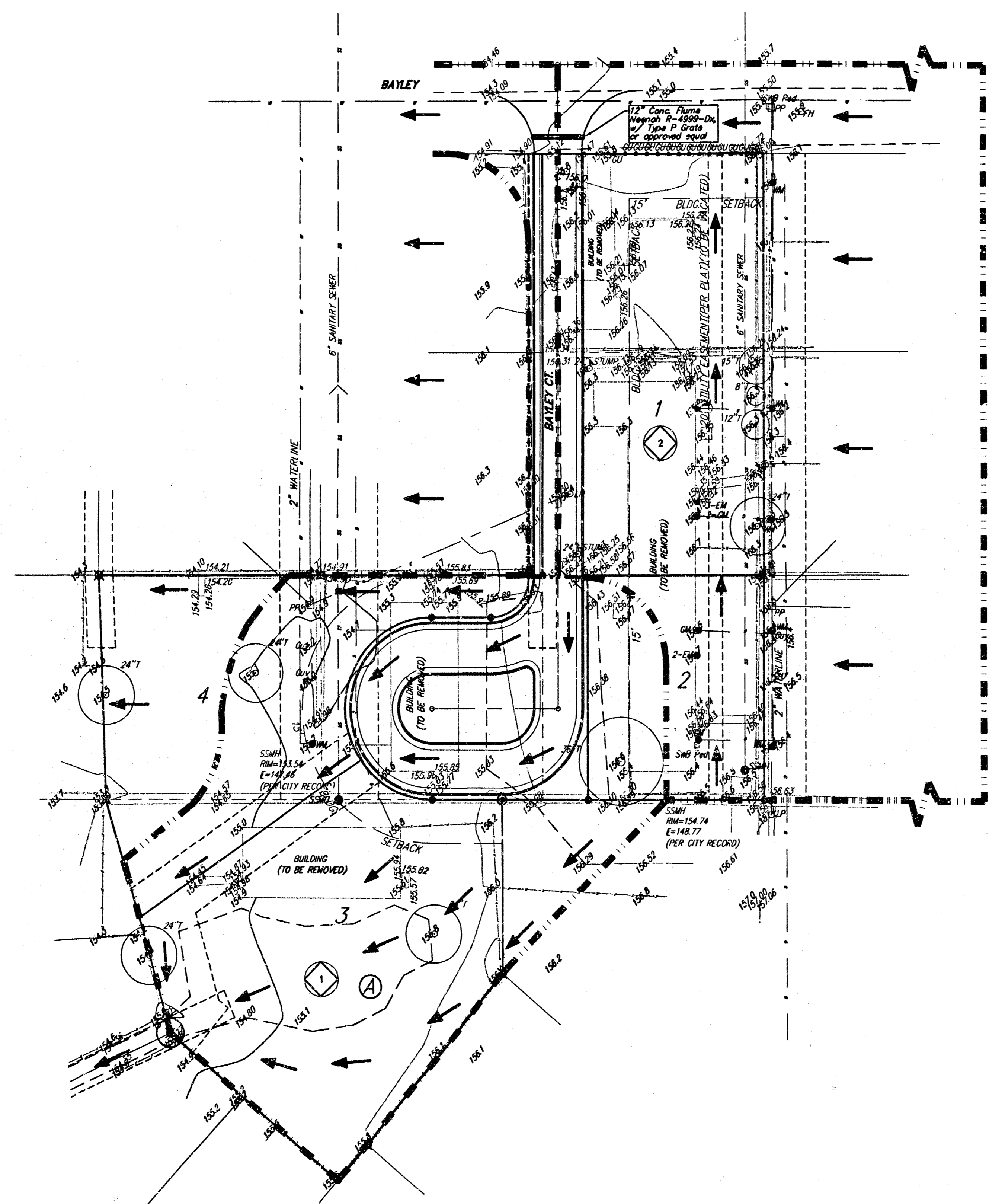


NOTES:
 Proposed Top of Foundation Elevations Are Shown On Plans. Contractor to Set Finished Floor Elevations.
 All Street Elevations Shown on Plans Are for Top of Curb (Full-Height).
 This Grading Plan is Designed with Non-View-Out Structures.
 Lot dimensions have been omitted on this plan, refer to the recorded plat for this information.

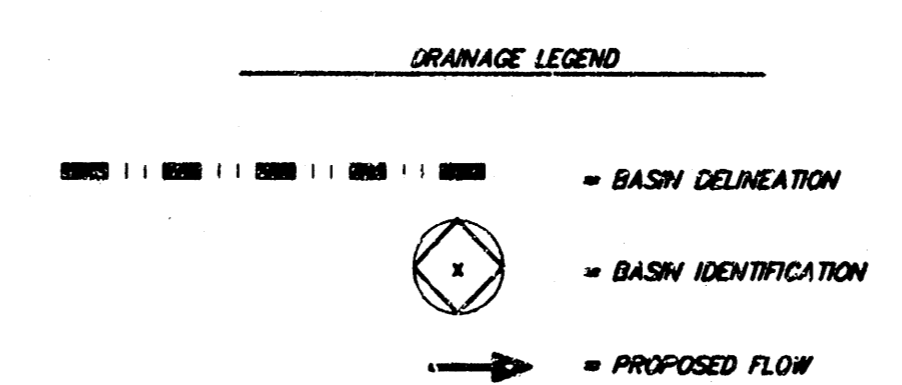
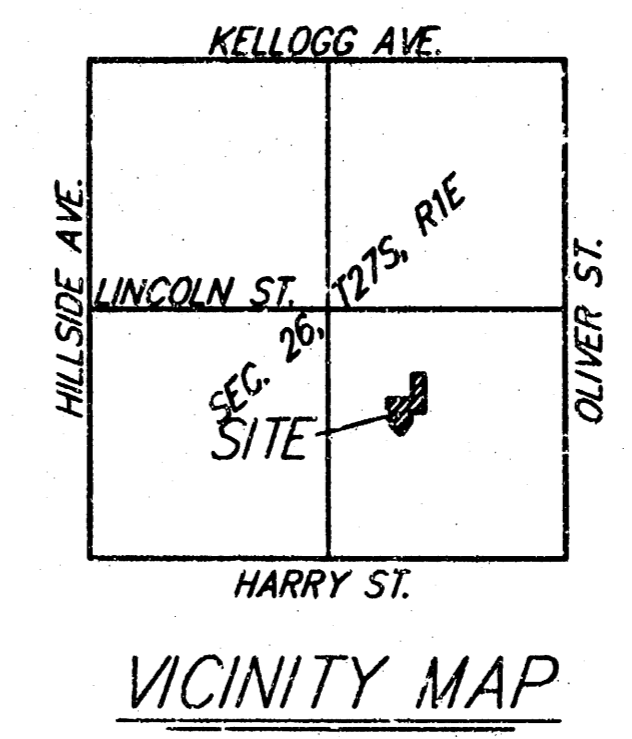
HILLTOP MANOR 3RD ADDITION GRADING PLAN WICHITA, KANSAS			
BAUGHMAN COMPANY P.A. ENGINEERING, SURVEYING, & PLANNING 218-282-7271 • 310 E. 10TH ST. WICHITA, KANSAS 67211			
PROJECT NUMBER		SHEET	
DESIGNER: RLC	DRAWN BY: [blank]	APPROVED: [blank]	DATE: 02/10/03
		SCALE: AS SHOWN	1 of 1

DRAINAGE PLAN HILLTOP MANOR 3RD ADDITION WICHITA, SEDGWICK COUNTY, KANSAS



DATE OF PREPARATION: DECEMBER 21, 2002
DATE OF TOPOGRAPHY: DECEMBER 16, 2002
CONTOUR INTERVALS = 1 FOOT

- PH ○ = Fire Hydrant
- GM ● = Gas Meter
- GA + = Guard Post (Ballard)
- GA - = Guy Anchor
- LP ○ = Light Pole
- EM ● = Electric Meter
- YL ○ = Yard Light
- PP □ = Power Pole
- SSM ● = Sanitary Sewer Manhole
- SWB ● = Southwestern Bell Pedestal
- WM ● = Water Meter
- = #4 REBAR 1/2" GAUGHMAN CAP (SET)
- ⊙ = #4 REBAR (FOUND)
- ⊗ = 3/4" IRON (FOUND)
- = 1/2" IRON (FOUND)
- ⊠ = CROSS (FOUND)



EXISTING - DEVELOPED CONDITIONS		Q = cfs							
BASH	D.A.	TC	min	C2	C5	C100	Q2	Q5	Q100
1	0.72	15	0.48	0.51	0.68	1.3	1.7	3.6	
2	0.27	15	0.48	0.51	0.68	0.5	0.6	1.4	

10 FEBRUARY 2003
BAUGHMAN COMPANY P. A.
ENGINEERING, SURVEYING & PLANNING
201 EAST 10TH ST. - 3RD FLOOR - WICHITA, KANSAS 67202
TEL: 316.261.1111 FAX: 316.261.1112