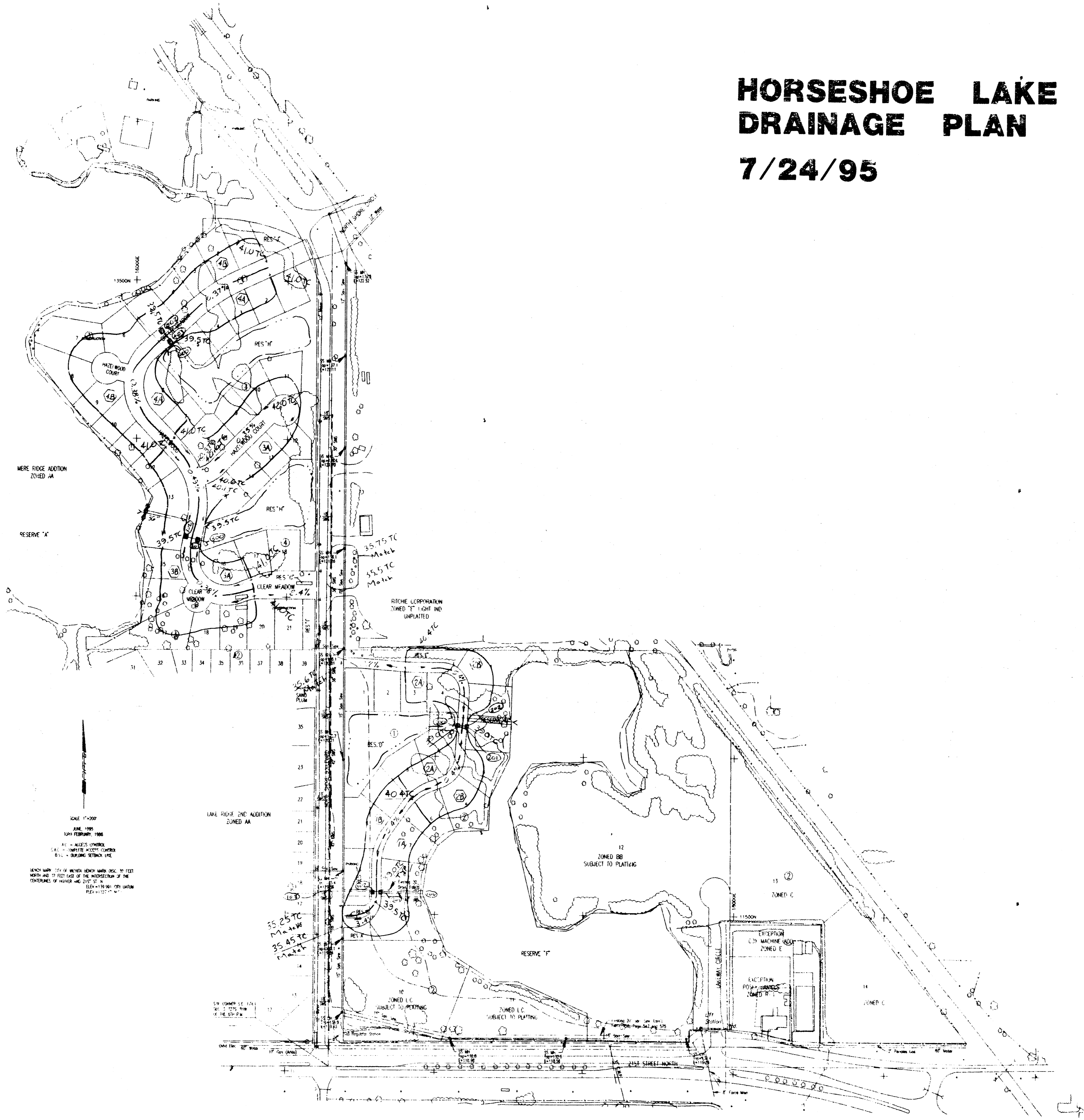


HORSESHOE LAKE DRAINAGE PLAN

7/24/95



LEGEND

- Drainage Basin Boundary
- Finished Elevation
- Curb Inlet & Storm Sewer
- ~ Proposed Pond Bank
- Basin Designation
- ⊙ SWS Node No.

SCALE 1"=200'
 DATE 7/24/95
 DRAWN BY [illegible]
 CHECKED BY [illegible]
 APPROVED BY [illegible]

ZONE B (SEE ALLOCATION ZONED AA)

RESERVE Y

ZONE C

ZONE E

ZONE C

ZONE C

ZONE C

ZONE C

ZONE C

ZONE C

ZONE C

ZONE C

ZONE C

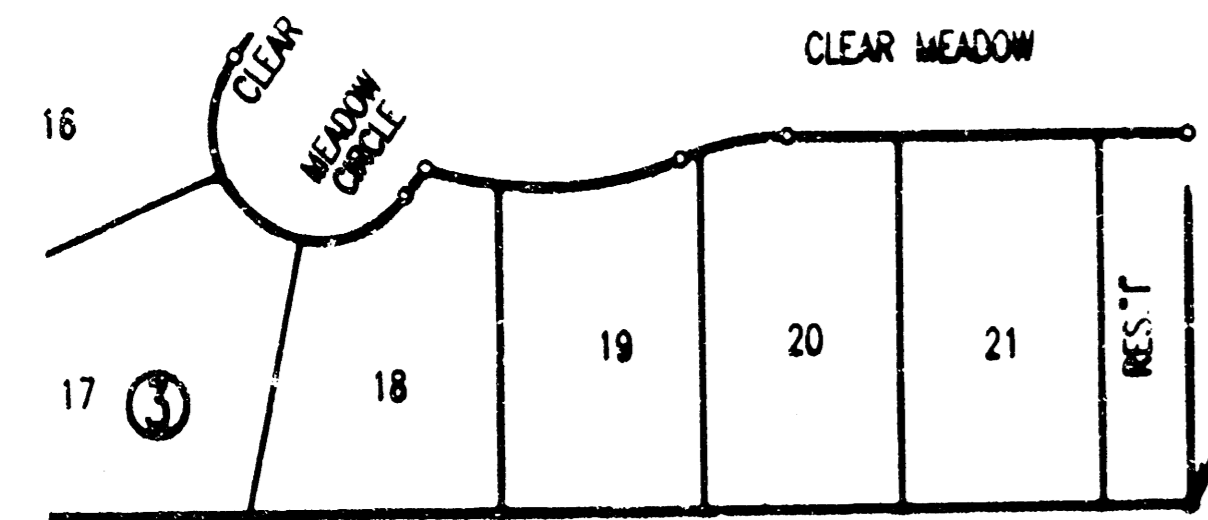
ZONE C

ZONE C

ZONE C

HORSESHOE LAKE

AN ADDITION TO WICHITA, SEDGWICK COUNTY, KANSAS
FOUR CORNER LOT GRADING



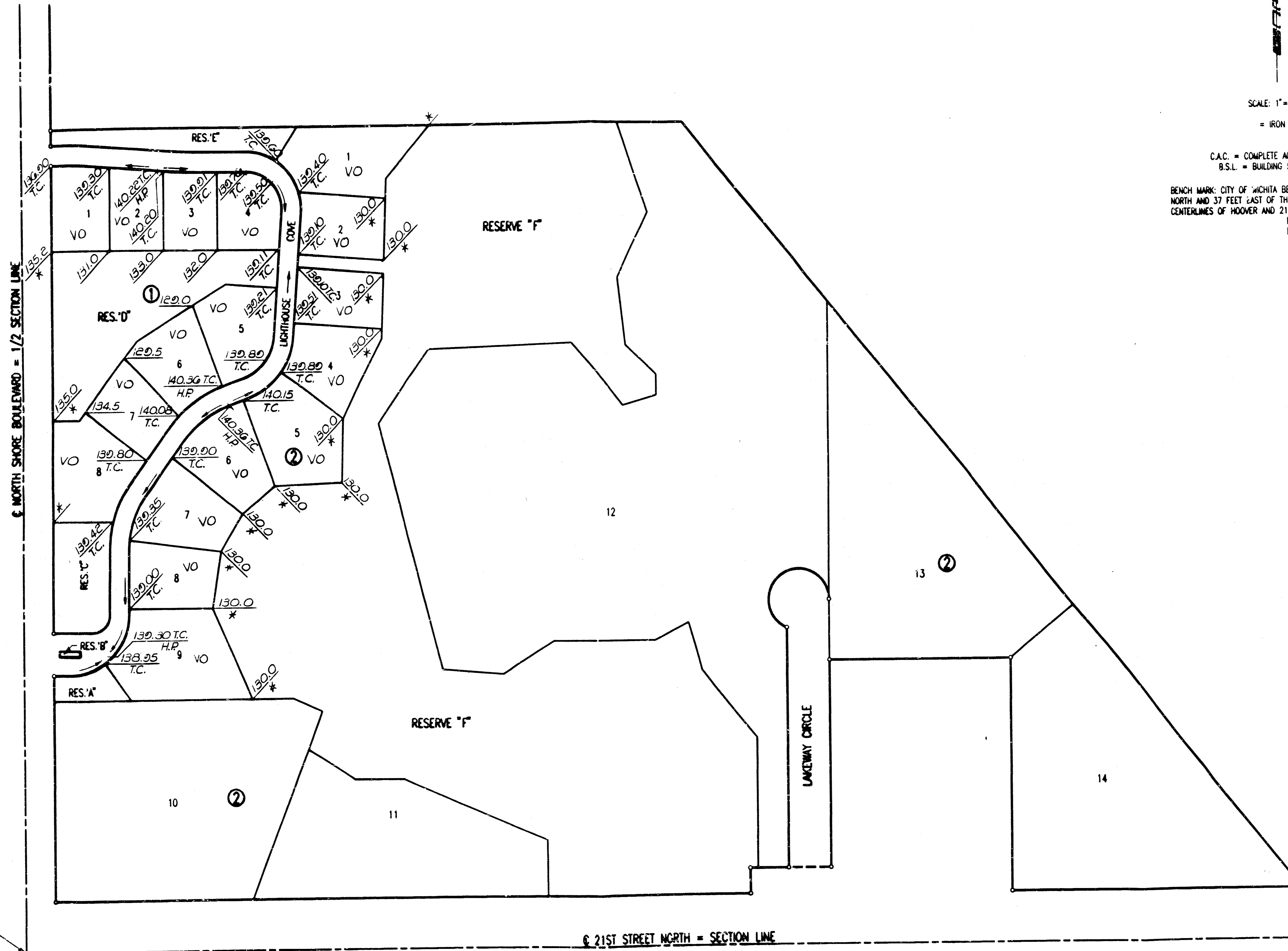
SCALE: 1"=100'
= IRON SET

C.A.C. = COMPLETE ACCESS CONTROL
B.S.L. = BUILDING SETBACK LINE
BENCH MARK: CITY OF WICHITA BENCH MARK DISC, 30 FEET
NORTH AND 37 FEET EAST OF THE INTERSECTION OF THE
CENTERLINES OF HOOPER AND 21ST ST. N.
ELEV. = 139.991 CITY DATUM
ELEV. = 1327.17 M.S.L.

LEGEND

- VO - View Out
- WO - Walk Out
- * - Match Existing
- T.C. - Top Curb
- H.P. - High Point

Note: Lot Grading for Lots 10-14, Block 2, shall be done at the time that the Lots are developed, and shall be done by the Lot owners architect or engineer.



us: /usr/ops/94341/mai.dgn
 date: 12/20/02
 time: 10:51:23