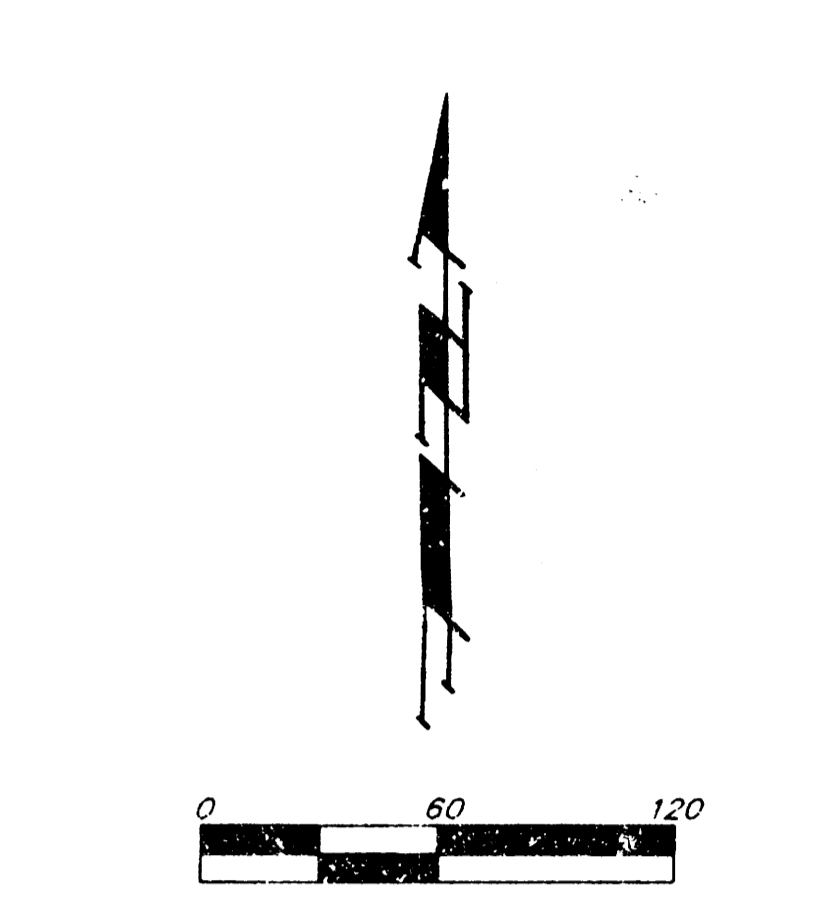
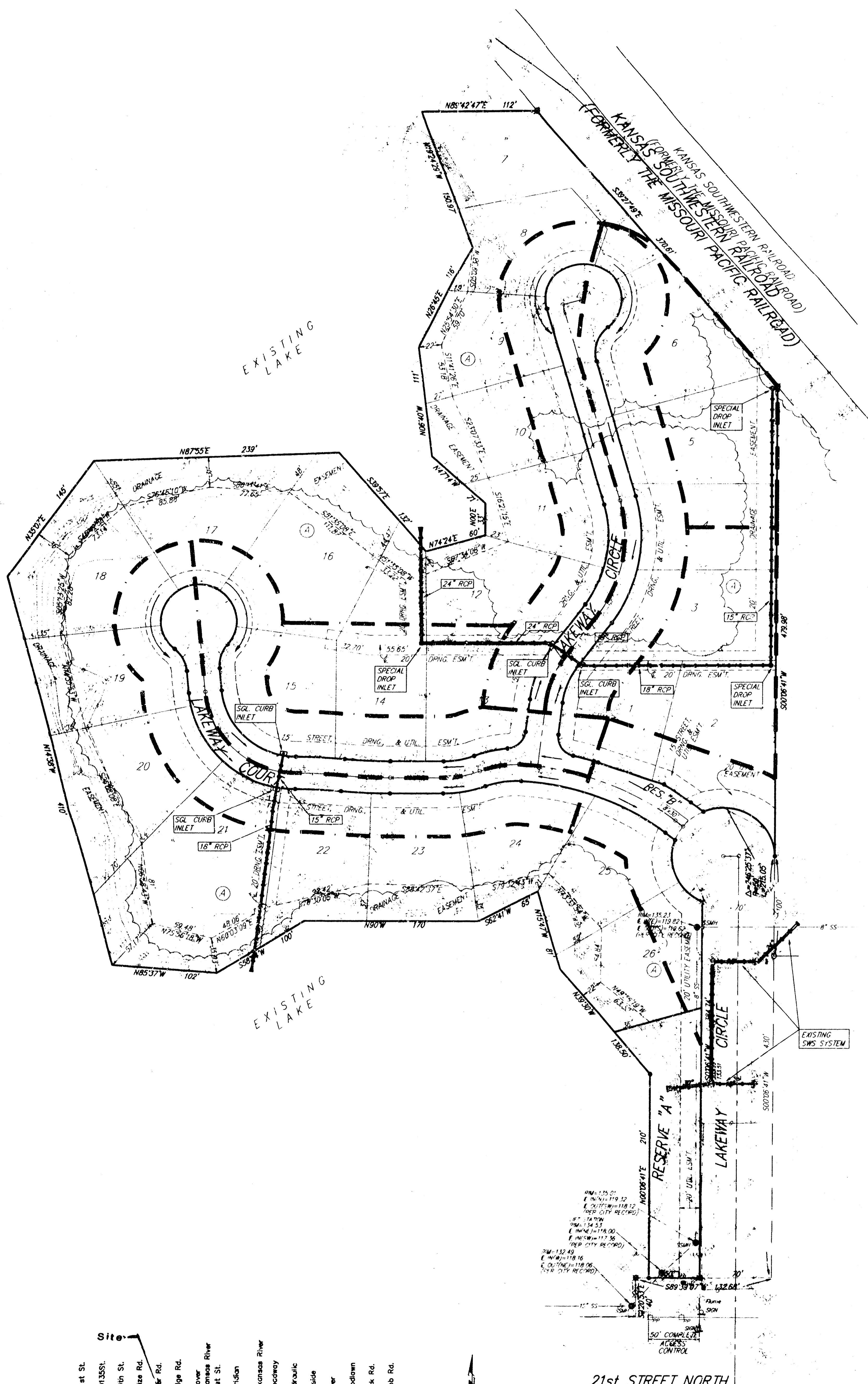


# DRAINAGE PLAN

## HORSESHOE LAKE 2ND ADDITION

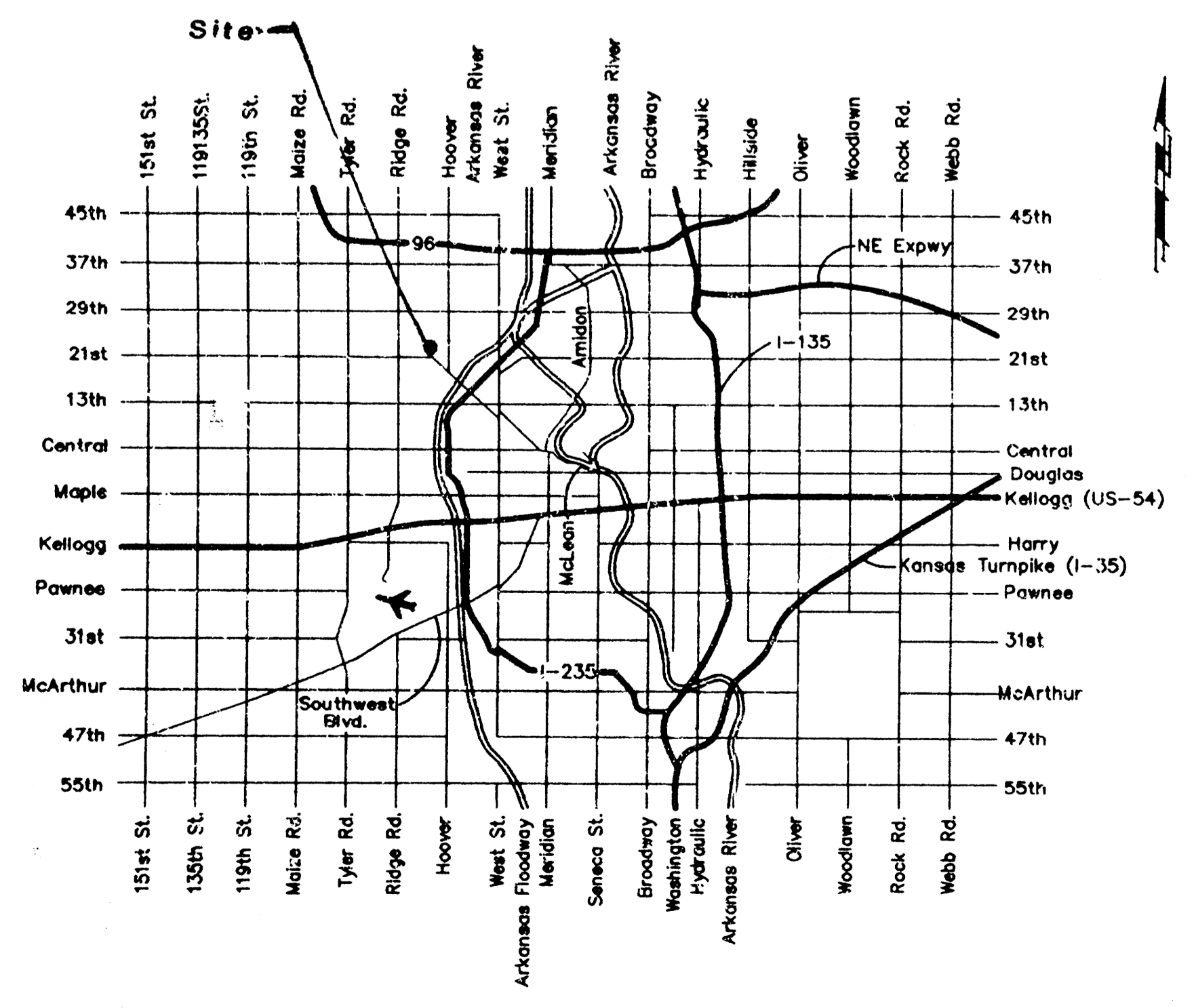
### WICHITA, SEDGWICK COUNTY, KANSAS



MINIMUM BUILDING PAD ELEVATION FOR LOWEST OPENING TO THE STRUCTURES			
		ELEVATION	
LOT	BLOCK	CITY DATUM	MSL
1-26	A	1,36.0	1,321.4

- LEGEND:**
- = 4" REBAR W/ "BAUGHMAN" CAP (SET)
  - = 3/4" IRON (FOUND)
  - = 1/2" IRON (FOUND)
  - × = CROSS SET OVER FOUND IRON
  - = 3/4" IRON W/ "PEC" IRON (FOUND)
- BENCHMARK:**
- \* CUT OVER IRON, WEST P.C. OF LAKEMAN
  - CIRCLE 031-06-54C
  - ELEVATION = 1,351.5 CITY DATUM

Drainage Area	Area (acres)	C <sub>s</sub>	C <sub>oo</sub>	T <sub>c</sub> (min.)	I <sub>s</sub> (in/hr)	I <sub>wo</sub> (in/hr)	Q <sub>s</sub> (cfs)	Q <sub>wo</sub> (cfs)
1	0.9	0.60	0.60	15	3.83	7.36	2.1	4.0
2	0.8	0.60	0.60	15	3.83	7.36	1.8	3.5
3	0.5	0.55	0.55	15	3.83	7.36	1.1	2.0
4	0.8	0.60	0.60	15	3.83	7.36	1.8	3.5
5	0.8	0.60	0.60	15	3.83	7.36	1.8	3.5
6	0.6	0.55	0.55	15	3.83	7.36	1.3	2.4
7	0.5	0.55	0.55	15	3.83	7.36	1.1	2.0



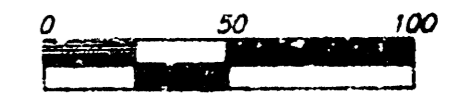
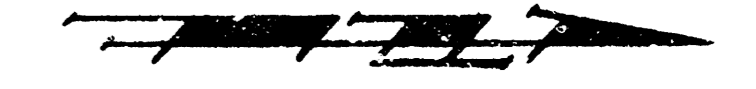
VICINITY MAP

NOTE: The proposed drainage plan provided herein is a generally defined plan to follow for design. It is recognized and assumed that upon the final design of street and storm sewer improvements with this plot that the designer will modify or alter the general drainage plan as necessary in order to implement the installation of the improvements to obtain the most economical design and construction possible.

**BENCHMARK:**

1" OUT OAK IRON, WEST P.C. OF LAKEWAY  
CIRCLE OR-DE-SAC.  
ELEVATION = 135.13 CITY DATUM

MINIMUM LOWEST FLOOR ELEVATION = 132.3 CITY DATUM



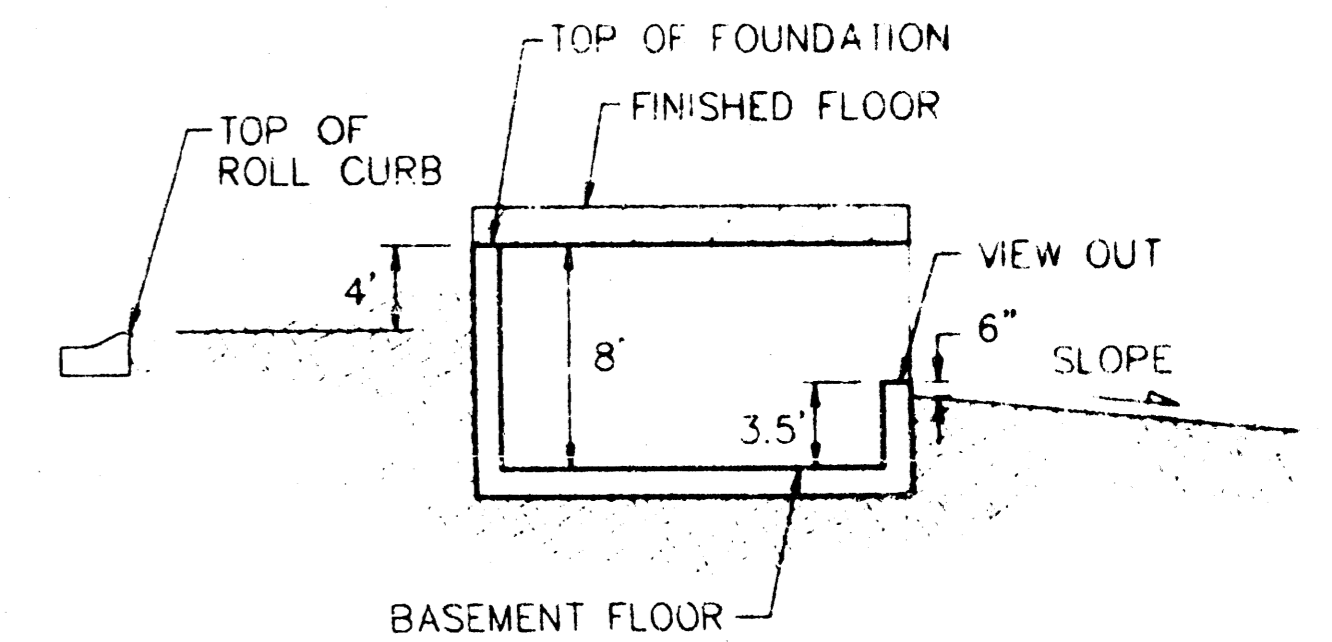
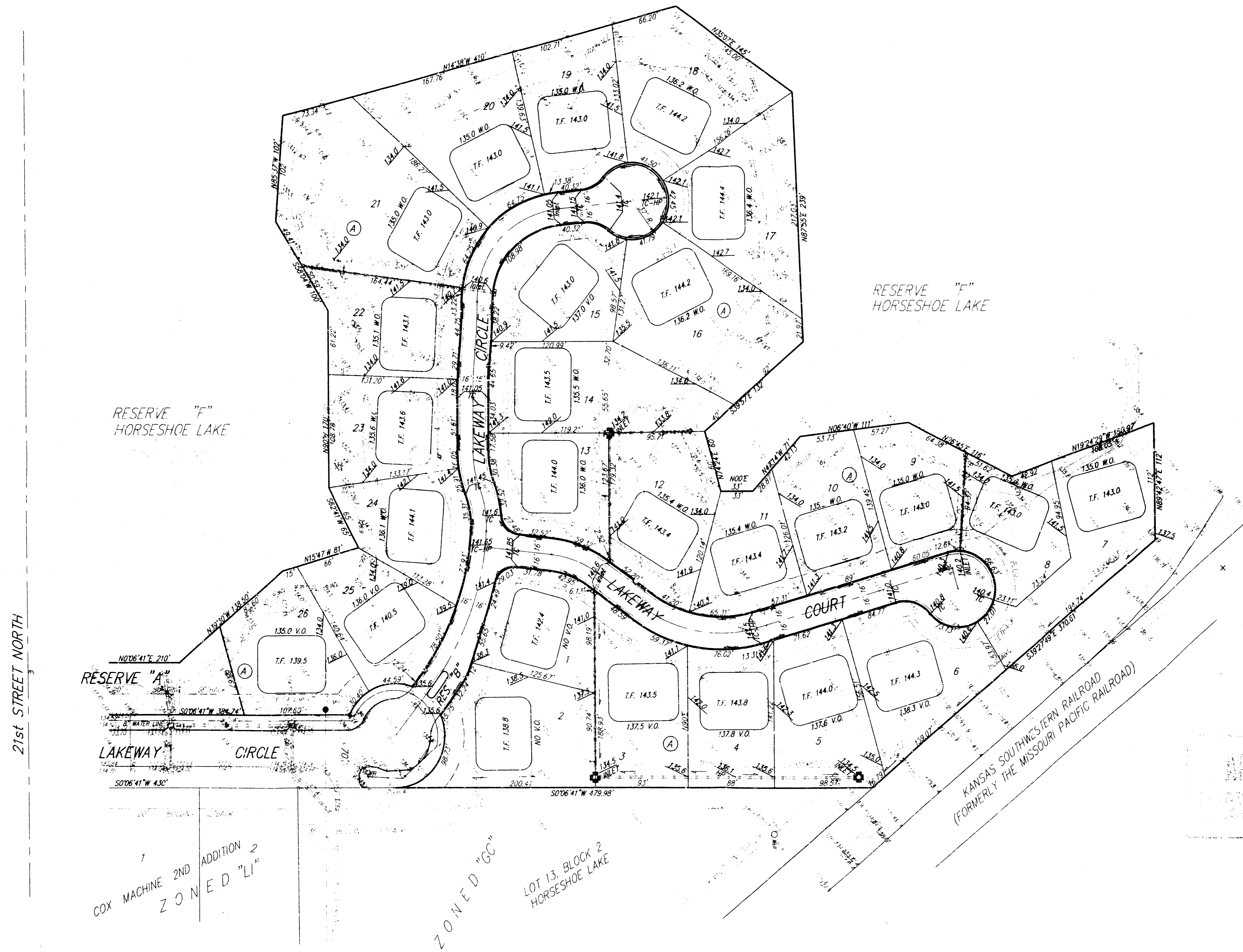
MINIMUM BUILDING PAD ELEVATION FOR LOWEST OPENING TO THE STRUCTURES			
LOT	BLOCK	ELEVATION	
		CITY DATUM	MSL
1-26	A	135.0	132.4

**NOTE:**

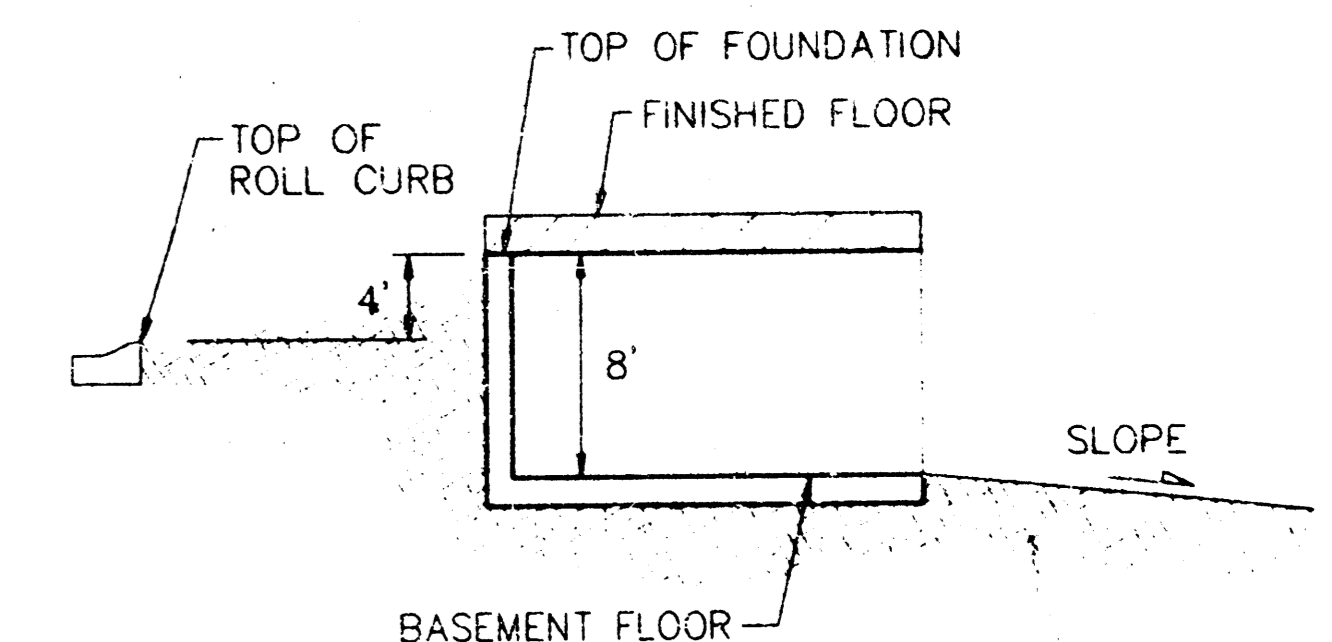
Proposed top of foundation elevations  
are shown on plans.  
Contractor to set finish floor elevation.

All street elevations shown on plans  
are for top of curb (full height).

View-out elevations are denoted as  
XX.X V.O.  
Walk-out elevations are denoted as  
XX.X W.O.



**TYPICAL VIEW OUT**  
NO SCALE



**TYPICAL WALK OUT**  
NO SCALE

REVISION: 5/26/98

**HORSESHOE LAKE 2ND ADDITION  
GRADING PLAN**  
WICHITA, KANSAS

**BAUGHMAN COMPANY P. A.**  
ENGINEERING, SURVEYING, & PLANNING  
316-262-7277 • 316-262-7278 • WICHITA, KANSAS 67211

PROJECT NUMBER			
DESIGN	DRAWN	APPROVED	DATE
NEW	JAB	NEW	4/20/98
			SCALE
			1" = 50'
			SHEET
			OF

COX MACHINE 2ND ADDITION 2  
ZONED "LI"

ZONED "GC"

LOT 13, BLOCK 2  
HORSESHOE LAKE