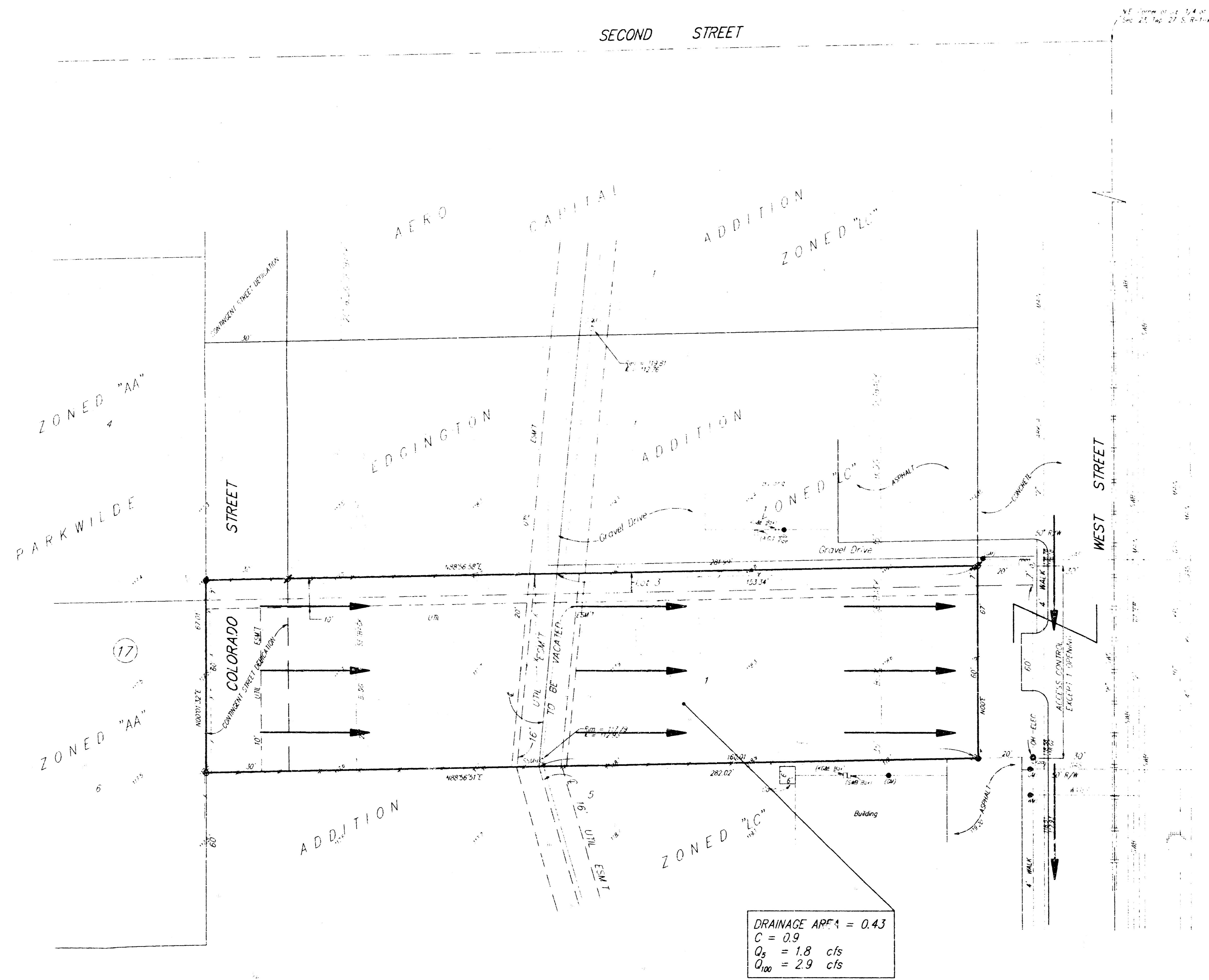


# DRAINAGE PLAN HOUDEK ADDITION WICHITA, SEDGWICK COUNTY, KANSAS



DRAINAGE AREA = 0.43  
 C = 0.9  
 $Q_5 = 1.8$  cfs  
 $Q_{100} = 2.9$  cfs



- LEGEND  
 1" = 20'  
 ● = 1/2" REBAR "BALLYMAN" CAP (NET)  
 ○ = 1/2" REBAR (ROUND)  
 ○ = 1/4" REBAR (ROUND)  
 ○ = 7" REBAR (ROUND)

LEGS  
 A replot of the South 7' of Lot 1 and the North 60' of Lot 5, Block 17, Parkwilde Addition, Wichita, Kansas located in the SE 1/4 of Sec. 23, Twp. 22-S, R-1-W

REVISIONS  
 City 135' x 14' West and 18' South intersection of 1/2' of West Street and 2nd Street North Elevation = 118.37

SURVEYOR  
 Marie Houdek  
 1127 N. ANSO  
 Wichita, KS 67212  
 (316) 942-2256

31 AUG 1994