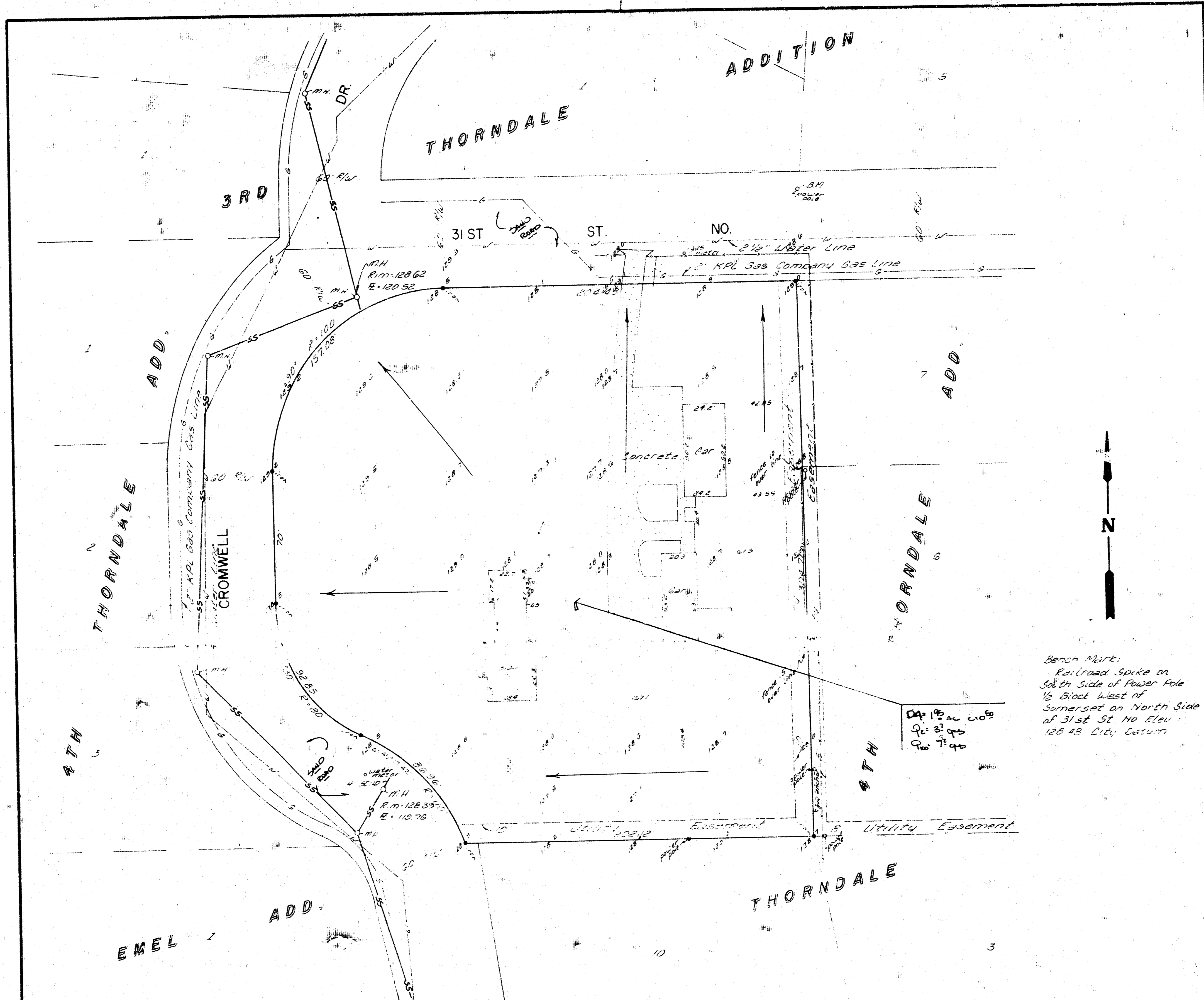


Keener Add.

7



Bench Mark:
 Railroad Spike on
 South Side of Power Pole
 1/2 Block West of
 Somerset on North Side
 of 31st St. No. Elev.
 126.45 D.M. Datum

SKETCH PLAT

KEENER ADDITION

BEING A REPLAT OF LOTS 1, 2 AND 3, MILTON CHASE
 ADDITION, WICHITA, KANSAS, AND LOT 4, 4TH THORNDALE
 ADDITION, SEDGWICK COUNTY, KANSAS, EXCEPT THAT
 PART REPLATTED AS MILTON CHASE ADDITION.

OWNER: DOUGLASS H. KEENER

DRAINAGE PLAN

ED BAUGHMAN COMPANY, P.A.
 SURVEYING & ENGINEERING
 2100 S. 27TH ST. - WICHITA, KANSAS 67211