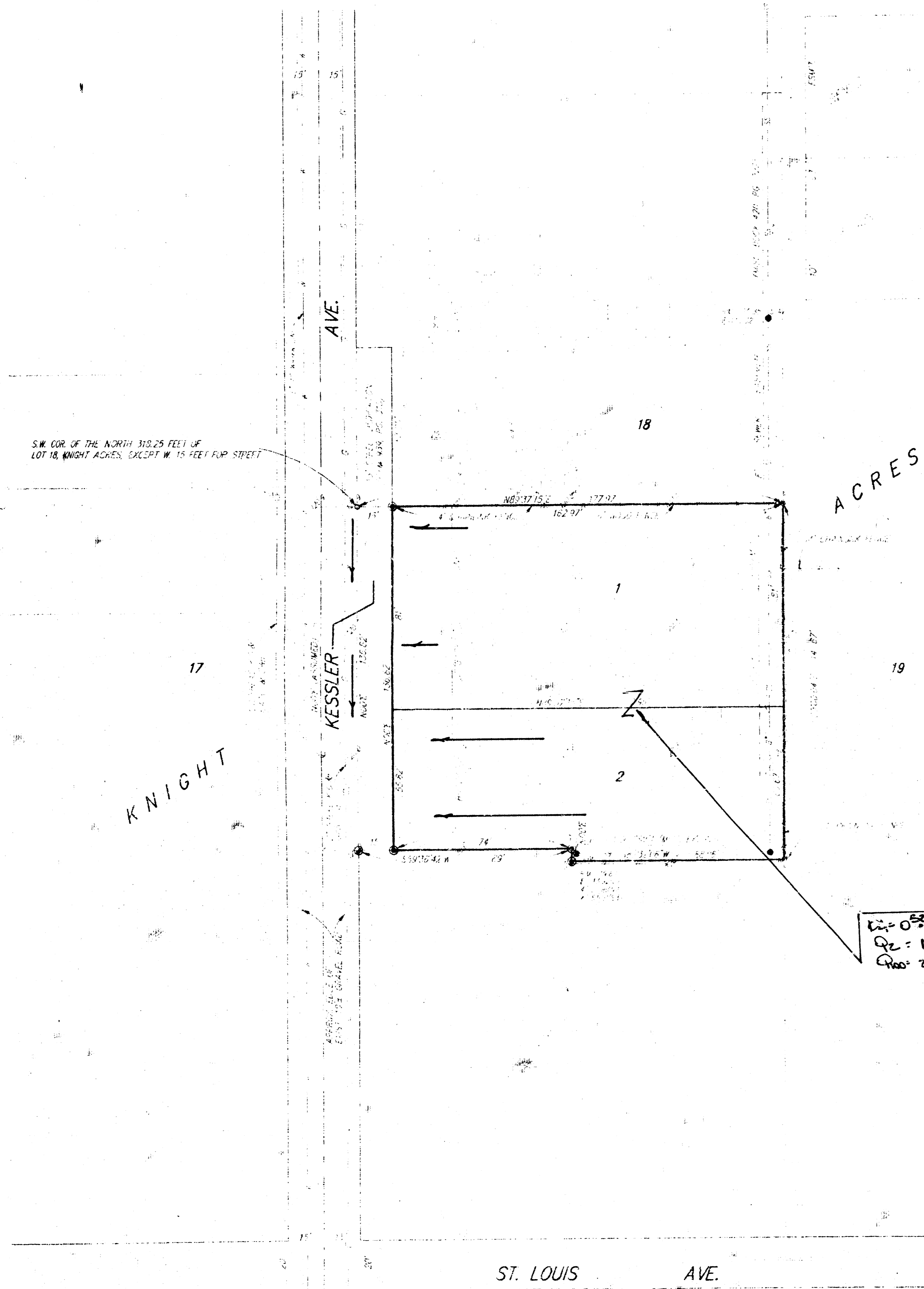


SKETCH PLAT STEVE KELLEY 2ND ADDITION

WICHITA, SEDGWICK COUNTY, KANSAS

LOT 18, KNIGHT ACRES, WICHITA, SEDGWICK COUNTY, KANSAS, EXCEPT THE NORTH 318.25 FEET THEREOF AND EXCEPT THE EAST 89 FEET OF THE SOUTH 150 FEET THEREOF AND EXCEPT THE EAST 89 FEET OF THE WEST 104 FEET OF THE SOUTH 155 FEET THEREOF, AND EXCEPT THE WEST 15 FEET THEREOF FOR STREET.

STEVE KELLEY CONSTRUCTION, INC.
2301 CEDAR CREST DR.
WICHITA, KANSAS 67223



SCALE: 1" = 40'
 ● = KESLER W. 224' 11" 1/2" SET
 ○ = 1/4" IRON PIN
 □ = 1/4" IRON PIN IN 10' x 10'
 ✕ = 1/4" IRON PIN IN 10' x 10'
 OF THE S.W. QUARTER
 WICHITA 2500-12 1 OF 1 1/2
 WICHITA, KANSAS

DRAINAGE PLAN

BAUGHMAN COMPANY P. A.
 SURVEYING & ENGINEERING
 316/262-7271 • 312 ELLIS • WICHITA, KANSAS 67211 • 4 JAN 1993