

DRAINAGE PLAN

STEVE KELLEY 3RD ADDITION

WICHITA, SEDGWICK COUNTY, KANSAS

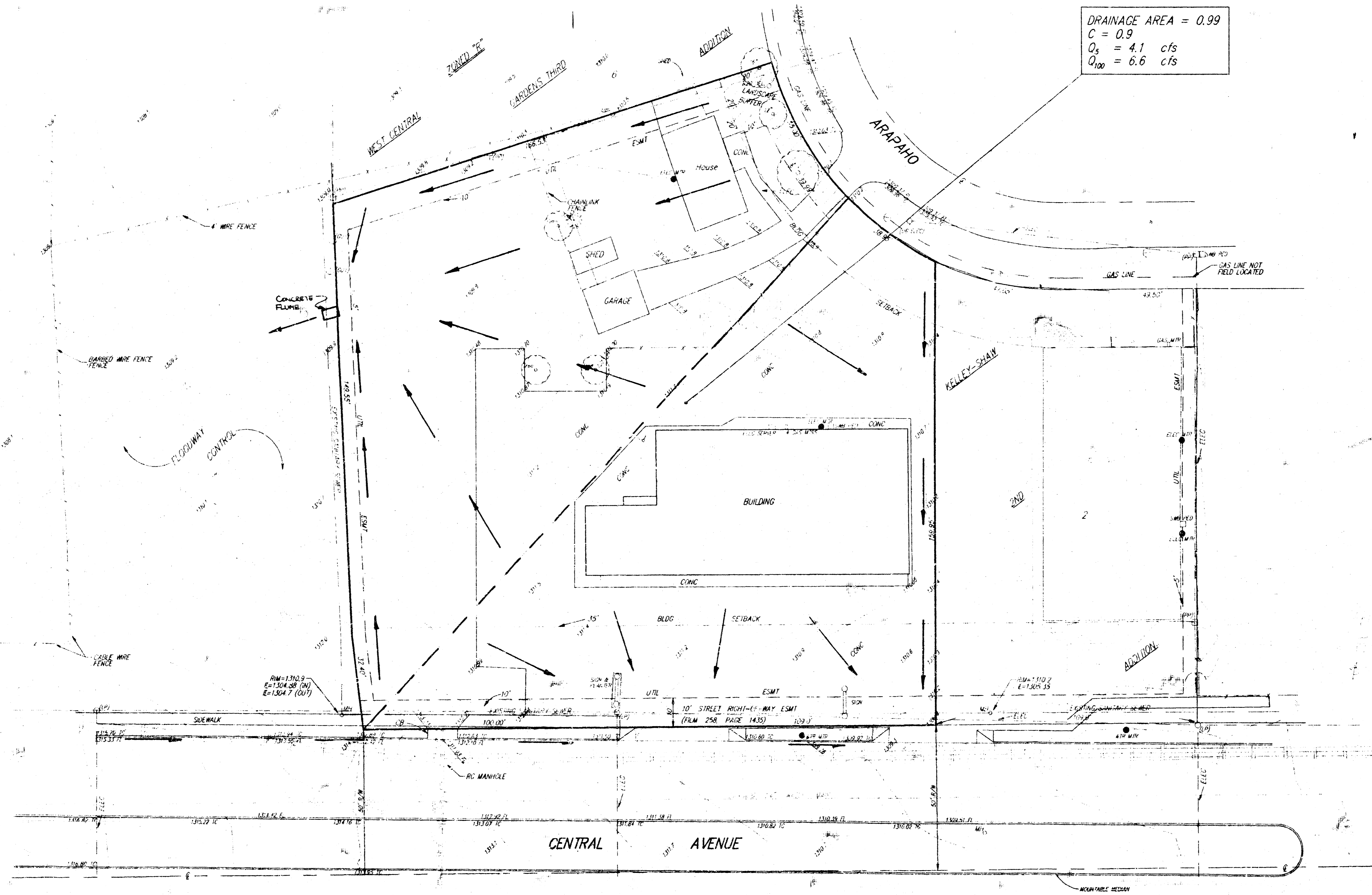
DRAINAGE AREA = 0.99
 C = 0.9
 Q_s = 4.1 cfs
 Q₁₀₀ = 6.6 cfs

OWNER: Steve Kelley
 2301 Cedar Crest Drive
 Wichita, KS 67223
 (316)722-8579

LEGAL: A replat of Lot 1, KELLEY-SHAW ADDITION, Wichita, Kansas together with Lot 5 and the west 120 feet of the south 50 feet of Lot 4, Block A, WEST CENTRAL GARDENS THIRD ADDITION, Sedgewick County, Kansas.

SCALE:
 1" = 20'
 1' CONTOUR INTERVAL

- LEGEND:
- = POWER POLE ● = WATER METER
 - = S.W.R. PEDESTAL ● = ELECTRIC METER
 - = GUY LINE
 - = ELECTRIC SERVER
 - = GAS METER
 - ⊙ = SATELLITE DISH
 - = LIGHT POLE
 - = SIGN



15 APR 1994