

Steve Kelley
2301 Cedar Crest Drive
Wichita, KS 67223
(316) 722-8579

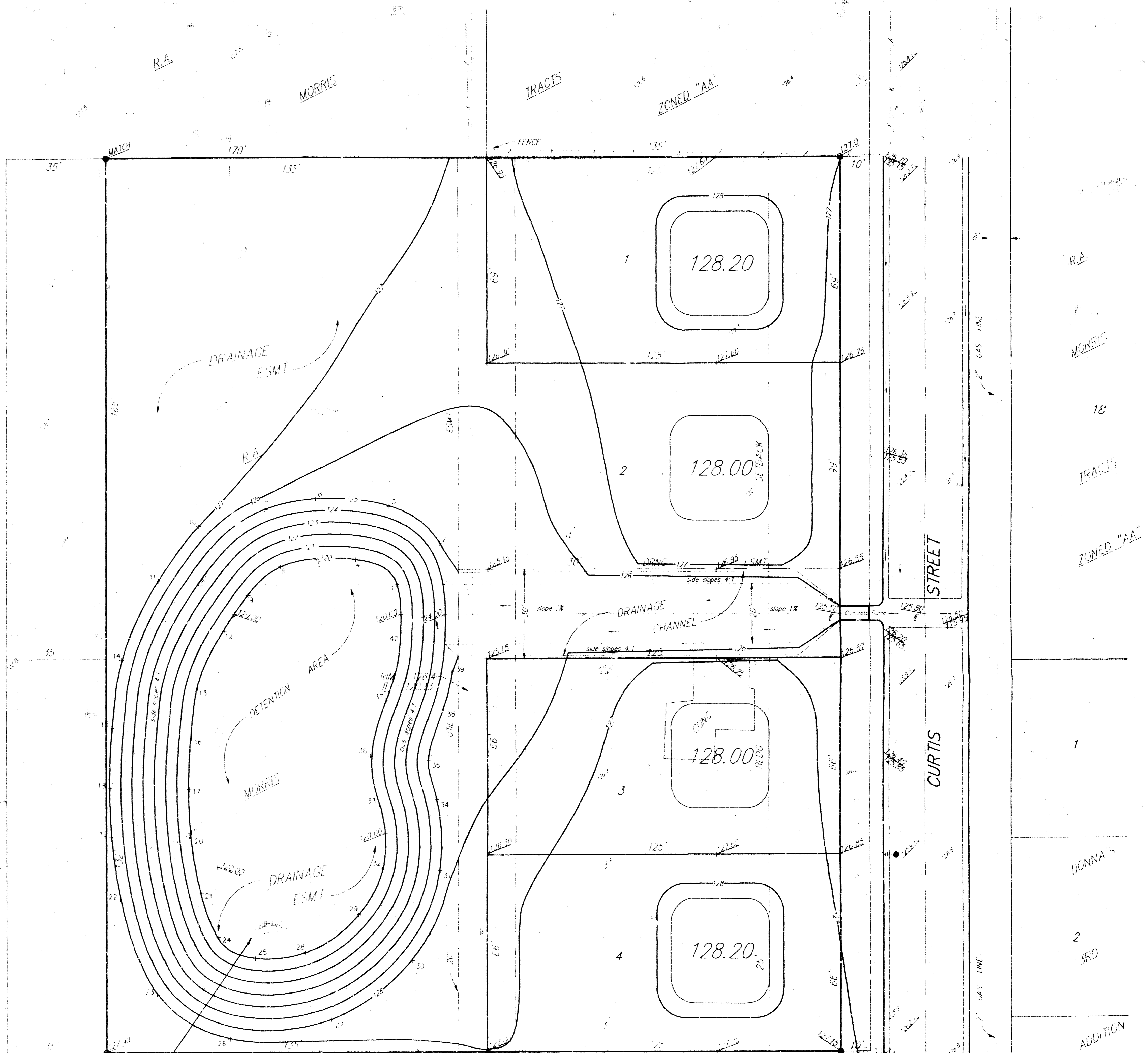
LEGAL: The South 158' of the East 270' of Lot 11,
together with the North 152' of the East
270' of Lot 12, R.A. Morris Tracts Addition,
Seelyville County, Kansas

LEGEND
- Solid line = Sub Area
- Dashed line = Easement
- Light line = Power Pole
- Power Pole
- Asterisk = Meter

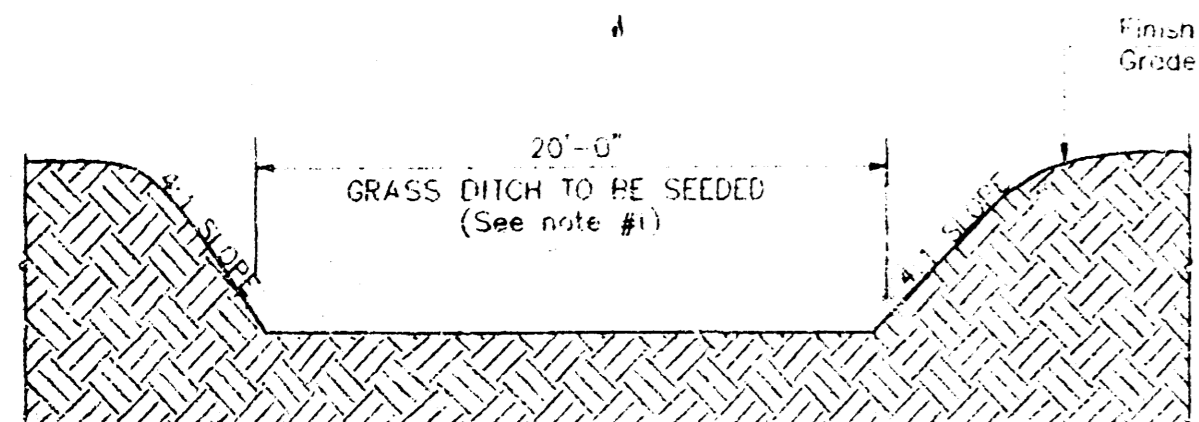
PT	NORTHING	EASTING
1	5329.192	4522.888
2	5342.756	4538.456
3	5355.274	4550.254
4	5337.490	4508.251
5	5337.537	4794.585
6	5357.818	4794.587
7	5354.111	4776.066
8	5334.978	4761.781
9	5325.353	4769.943
10	5348.426	4752.872
11	5330.224	4738.836
12	5313.403	4761.667
13	5294.168	4752.615
14	5303.444	4725.544
15	5280.563	4722.205
16	5277.439	4750.332
17	5260.268	4749.353
18	5260.372	4721.353
19	5244.017	4722.076
20	5243.571	4750.246
21	5225.101	4753.695
22	5222.982	4725.327
23	5191.161	4728.315
24	5210.397	4759.708
25	5203.451	4772.611
26	5176.392	4763.582
27	5182.653	4799.645
28	5205.348	4791.728
29	5218.071	4809.455
30	5202.705	4828.315
31	5233.096	4838.549
32	5233.528	4817.667
33	5254.644	4816.057
34	5256.870	4837.138
35	5270.089	4834.067
36	5271.477	4813.565
37	5290.281	4819.319
38	5286.785	4839.444
39	5299.853	4842.992
40	5309.245	4824.156

GENERAL NOTES

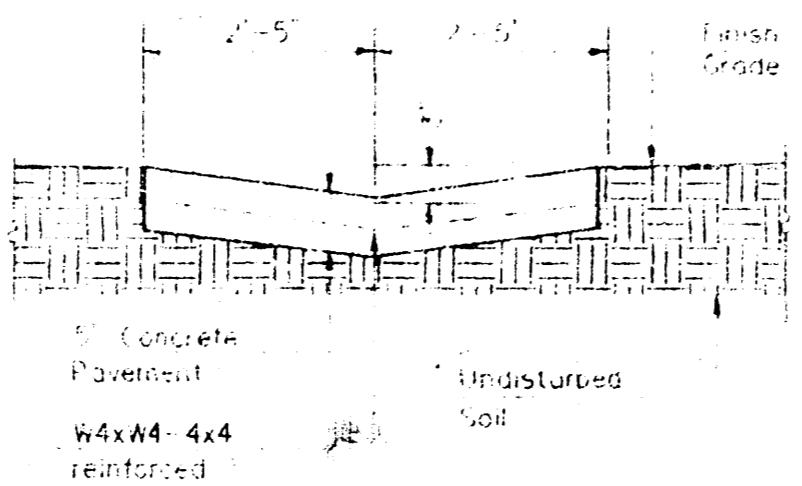
- All disturbed areas above state water level shall be seeded with reseed rescue at a rate of 12 pounds per 1,000 square feet, fertilized with a 16-20-0 ratio applied at a rate of 4 pounds per 1,000 square feet, and mulched at the standard rate, according to City of Wichita supplemental specifications for mounding areas seeded with grass seed.
- Proposed minimum average floor elevations are shown on plans. Contractor to set finished floor elevation.
- Contour elevations shown are for graphic representation of drainage concept. Spot elevations shall take precedence over contour lines.
- Contractor will be required to provide notice to utility companies a minimum of twenty-four (24) hours prior to any excavation, as follows:
Kansas One-Call 1-800-667-2470
- Exist utilities and their locations, as shown on the plans, represent the best information obtainable for design. Location information has been obtained from various utility companies and is either from company record drawings or company-provided field locations. The contractor will be required to work around existing utilities which do not conflict with proposed construction.
- Rubble from removal of miscellaneous structures and excess excavation which is to be wasted shall be deposited at a site to be provided by the contractor. Disposal sites shall be approved by the Engineer as to suitability, appearance, and location. Locations that, in the opinion of the Engineer, will show an unsightly appearance will not be approved.
- Traffic affected by the construction on this project shall be handled in accordance with the latest edition of the Manual on Uniform Traffic Control Devices.



Retention Basin
Storage Volume = 1.7 acre-ft
Area = 3.73 acres
C=0.4
Q2=8.7 cfs
Q100=11.0 cfs



GRASS DRAINAGE DITCH
NOT TO SCALE



CONCRETE FLOOR
NOT TO SCALE

**APPROVED
DRAINAGE PLAN**

STEVE KELLEY 40th ADDITION
SITE GRADING PLAN

BAUGHMAN COMPANY P. A.
ENGINEERING & SURVEYING
316/262-7271 • 315 ELLIS • WICHITA, KANSAS 67211

PROJECT NUMBER

DESIGN	DRAWN	APPROVED	DATE	SCALE	SHEET
JUL	JUL		AUG. 1994	1"=20'	1