

DRAINAGE AREA: 0.82 acres + 0.94 acres
 C = 0.9 for Post-Development C = 0.85 for Pre-Development
 I₅ = 4.56 in
 I₁₀₀ = 7.37 in

- PRE-DEVELOPED Q's:

$$\begin{aligned} Q_5 &= \frac{\text{SOUTH}}{(4.56)(0.85)(0.82)} \\ &= 3.2 \text{ cfs} \\ Q_{100} &= \frac{\text{SOUTH}}{(7.37)(0.85)(0.82)} \\ &= 5.1 \text{ cfs} \end{aligned}$$

$$\begin{aligned} Q_5 &= \frac{\text{NORTH}}{(4.56)(0.9)(0.94)} \\ &= 3.9 \text{ cfs} \\ Q_{100} &= \frac{\text{NORTH}}{(7.37)(0.9)(0.94)} \\ &= 6.2 \text{ cfs} \end{aligned}$$

- POST-DEVELOPED Q's:

$$\begin{aligned} Q_5 &= \frac{\text{SOUTH}}{(4.56)(0.9)(0.82)} \\ &= 3.4 \text{ cfs} \\ Q_{100} &= \frac{\text{SOUTH}}{(7.37)(0.9)(0.82)} \\ &= 5.4 \text{ cfs} \end{aligned}$$

$$\begin{aligned} Q_5 &= \frac{\text{NORTH}}{(4.56)(0.9)(0.94)} \\ &= 3.9 \text{ cfs} \\ Q_{100} &= \frac{\text{NORTH}}{(7.37)(0.9)(0.94)} \\ &= 6.2 \text{ cfs} \end{aligned}$$

DRAINAGE AREA: 0.82 acres + 0.94 acres
 C = 0.9 for Post-Development C = 0.85 for Pre-Development
 I₅ = 4.56 in
 I₁₀₀ = 7.37 in

- PRE-DEVELOPED Q's:

$$\begin{aligned} Q_5 &= \frac{\text{SOUTH}}{(4.56)(0.85)(0.82)} \\ &= 3.2 \text{ cfs} \\ Q_{100} &= \frac{\text{SOUTH}}{(7.37)(0.85)(0.82)} \\ &= 5.1 \text{ cfs} \end{aligned}$$

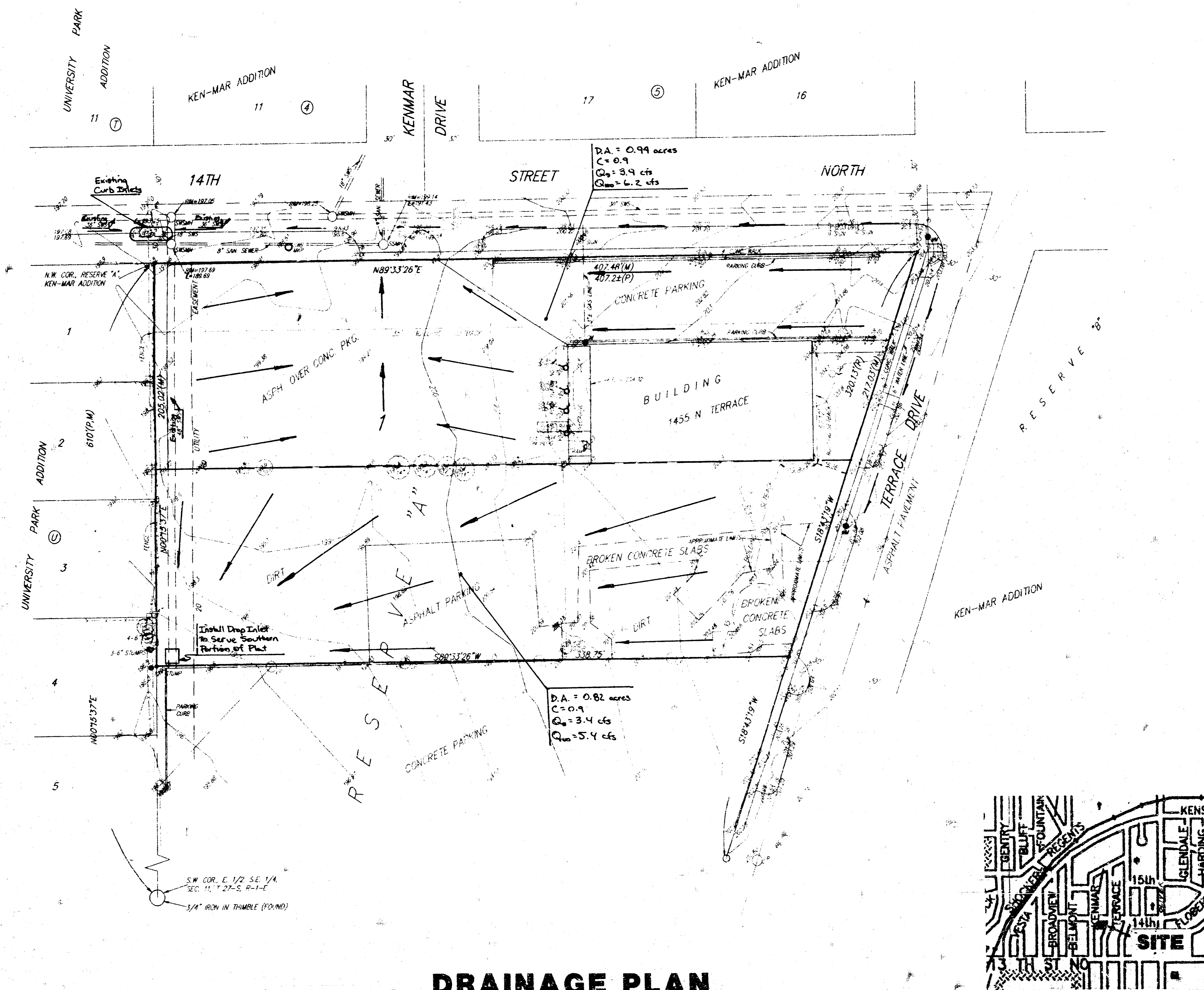
$$\begin{aligned} Q_5 &= \frac{\text{NORTH}}{(4.56)(0.9)(0.94)} \\ &= 3.9 \text{ cfs} \\ Q_{100} &= \frac{\text{NORTH}}{(7.37)(0.9)(0.94)} \\ &= 6.2 \text{ cfs} \end{aligned}$$

- POST-DEVELOPED Q's:

$$\begin{aligned} Q_5 &= \frac{\text{SOUTH}}{(4.56)(0.9)(0.82)} \\ &= 3.4 \text{ cfs} \\ Q_{100} &= \frac{\text{SOUTH}}{(7.37)(0.9)(0.82)} \\ &= 5.4 \text{ cfs} \end{aligned}$$

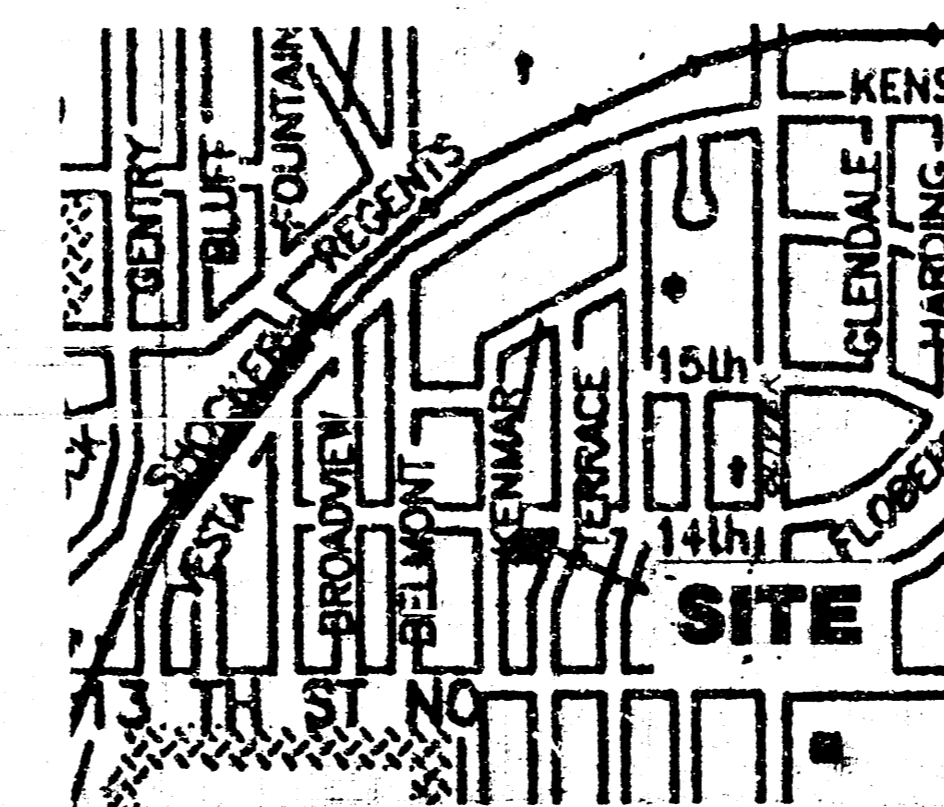
$$\begin{aligned} Q_5 &= \frac{\text{NORTH}}{(4.56)(0.9)(0.94)} \\ &= 3.9 \text{ cfs} \\ Q_{100} &= \frac{\text{NORTH}}{(7.37)(0.9)(0.94)} \\ &= 6.2 \text{ cfs} \end{aligned}$$

SKETCH PLAT KEN-MAR 2ND ADDITION WICHITA, SEDGWICK COUNTY, KANSAS



DRAINAGE PLAN

19 Sept 1994



VICINITY MAP

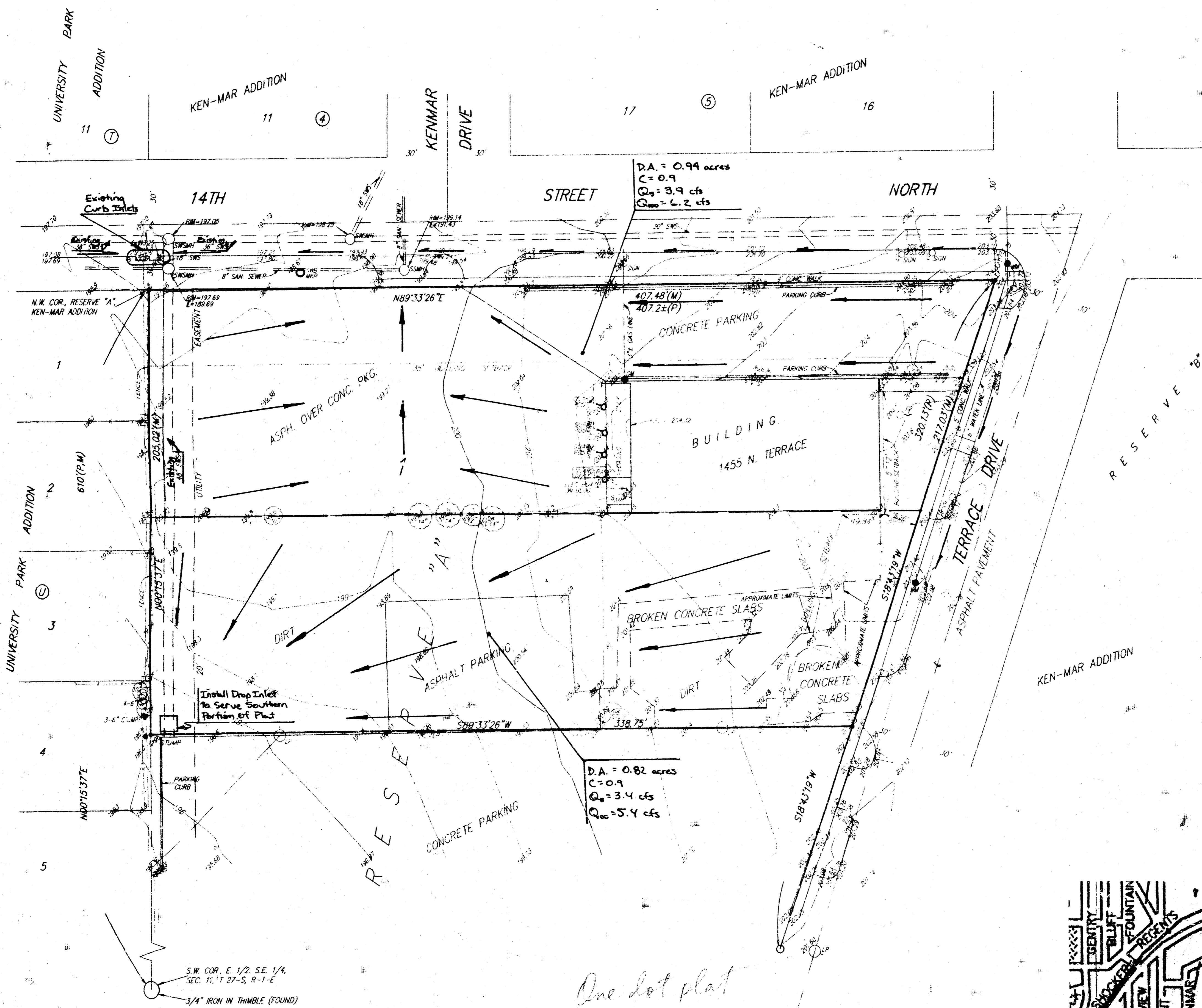
- SCALE
1" = 50'
- = 1/2" REBAR W/ "BAUGHMAN" CAP (SET)
 - = 3/4" REBAR (FOUND)
 - = 1/2" IRON (FOUND)
 - (P) = PLATED
 - (M) = MEASURED
- LEGEND
- = GUY WIRE
 - = DECIDUOUS TREE
 - = POWER POLE
 - = LIGHT POLE
 - = WATER METER
 - = GAS METER
 - = YARD POST
 - = SANITARY SERIES MANHOLE
 - = STORM WATER SEWER MANHOLE
 - = SIGN

OWNER:
MICHAELIS REAL ESTATE #2, L.L.C.
W. A. MICHAELIS, JR., PRESIDENT
211 N. BROADWAY
WICHITA, KS 67202
PH: 316-264-8394

LEGAL DESCRIPTION:
THE NORTH 205 FEET OF RESERVE "A",
KEN-MAR ADDITION TO WICHITA, KANSAS.

BENCH MARK:
TEMPORARY BENCHMARK, N.E. CORNER OF
THE INTERSECTION, OLIVER & 13TH ST. NO.
"C" CUT, N.W. COR. OF CONC. BASE OF
TRAFFIC LIGHT POLE.
ELEV. = 208.45

SKETCH PLAT KEN-MAR 2ND ADDITION WICHITA, SEDGWICK COUNTY, KANSAS

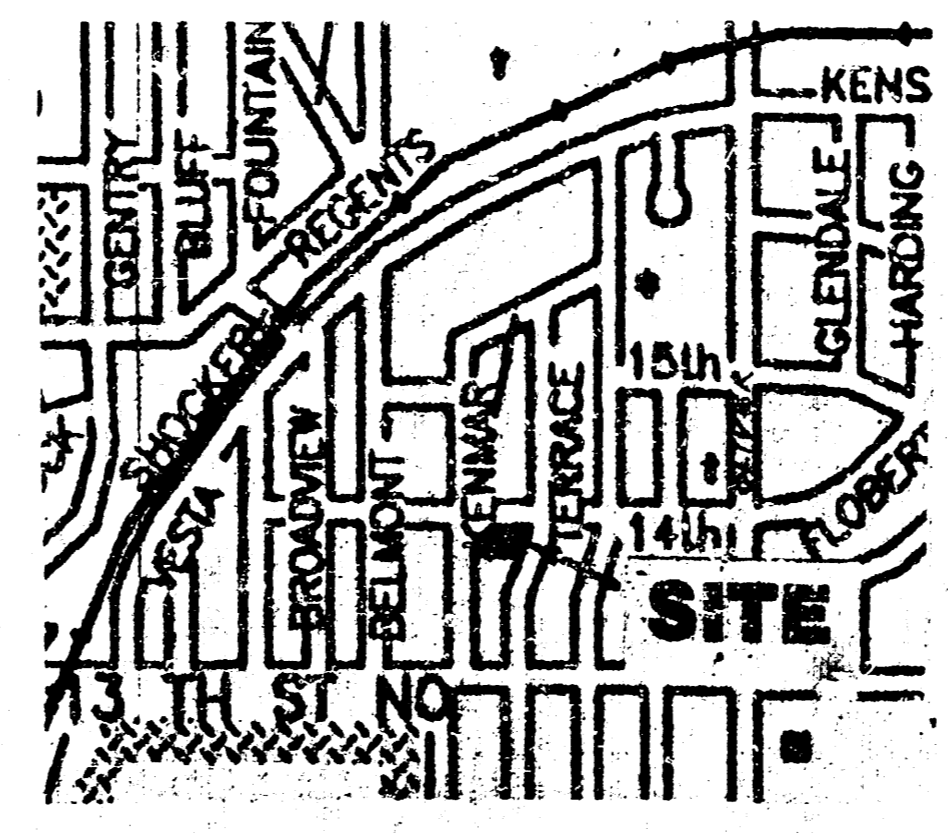


- SCALE
1" = 50'
- = 1/2" REBAR w/ "BUSHMAN" CAP (SET)
 - = 3/4" REBAR (FOUND)
 - = 1/2" IRON (FOUND)
 - (P) = PLATED
 - (M) = MEASURED
- LEGEND
- GUY WIRE
 - DECIDUOUS TREE
 - POWER POLE
 - LIGHT POLE
 - WATER METER
 - GAS METER
 - SLAB POST
 - SANITARY SEWER MANHOLE
 - STORM WATER SEWER MANHOLE
 - SIGN

OWNER:
 MICHAELIS REAL ESTATE #2, L.L.C.
 W. A. MICHAELIS, JR., PRESIDENT
 211 N. BROADWAY
 WICHITA, KS 67202
 PH: 316-264-9394

LEGAL DESCRIPTION:
 THE NORTH 205 FEET OF RESERVE "A",
 KEN-MAR ADDITION TO WICHITA, KANSAS.

BENCH MARK:
 TEMPORARY BENCHMARK, N.E. CORNER OF
 THE INTERSECTION, OLIVER & 13TH ST. NO.
 "C" CUT, N.W. COR. OF CONC. BASE OF
 TRAFFIC LIGHT POLE.
 ELEV. = 208.45



VICINITY MAP

DRAINAGE PLAN
 11 Sept 24

One lot plat