

WILLIAM L. RUMBER L.S.
 JAMES LUNDGREN L.S.
 N. BERT WOOTEN P.E.

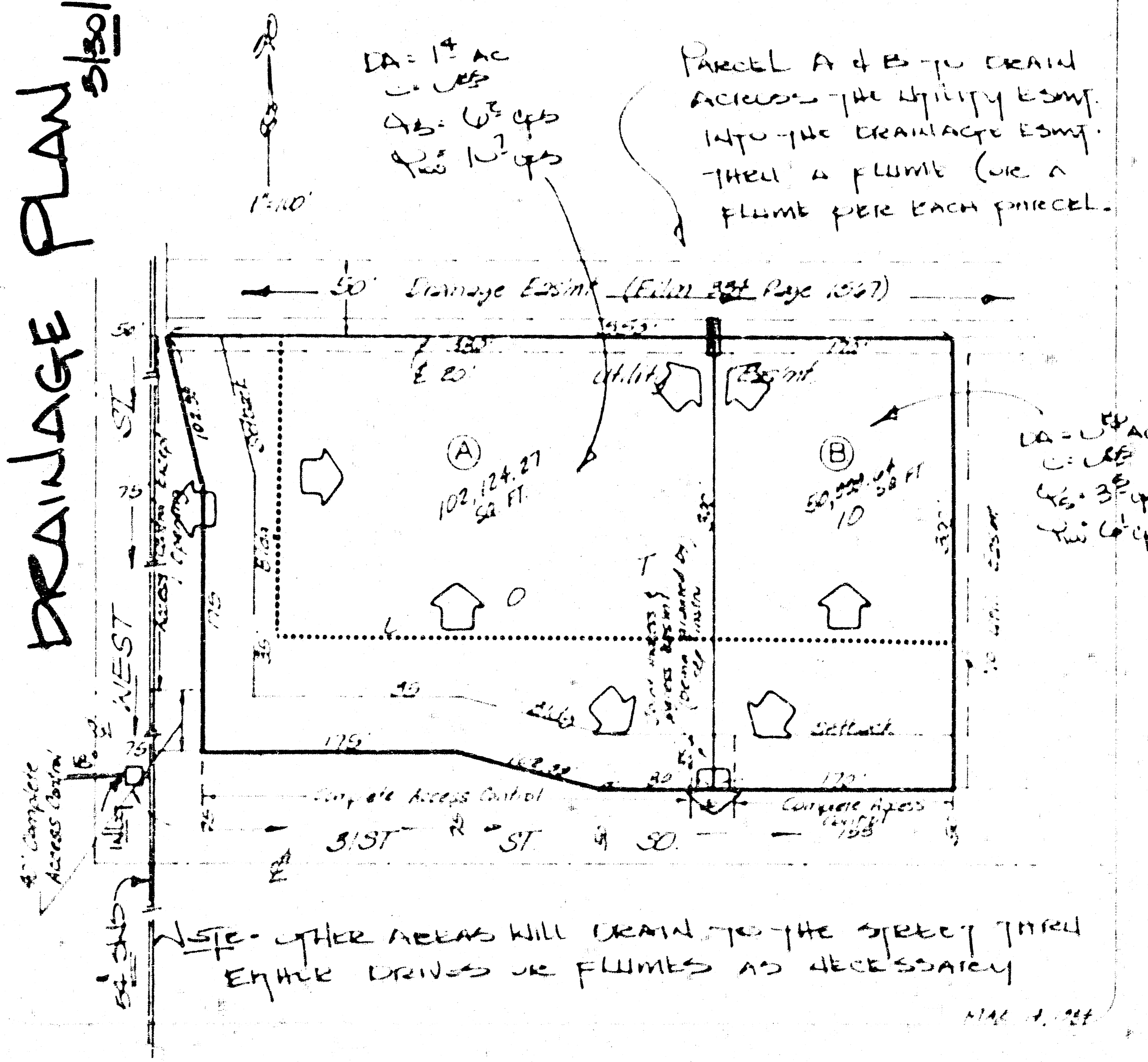


BAUGHMAN COMPANY, P.A.
 SURVEYING & ENGINEERING
 316 262 7271 • 330 LAURA • WICHITA KANSAS 67211

LOT SPLIT

- (A) Lot 10, except the east 170 feet thereof, Block 1, Kessler-Koch Addition, Wichita, Sedgwick County, Kansas.
- (B) The east 170 feet of Lot 10, Block 1, Kessler-Koch Addition, Wichita, Sedgwick County, Kansas.

DRAINAGE PLAN
5/30/04



5/16/04

