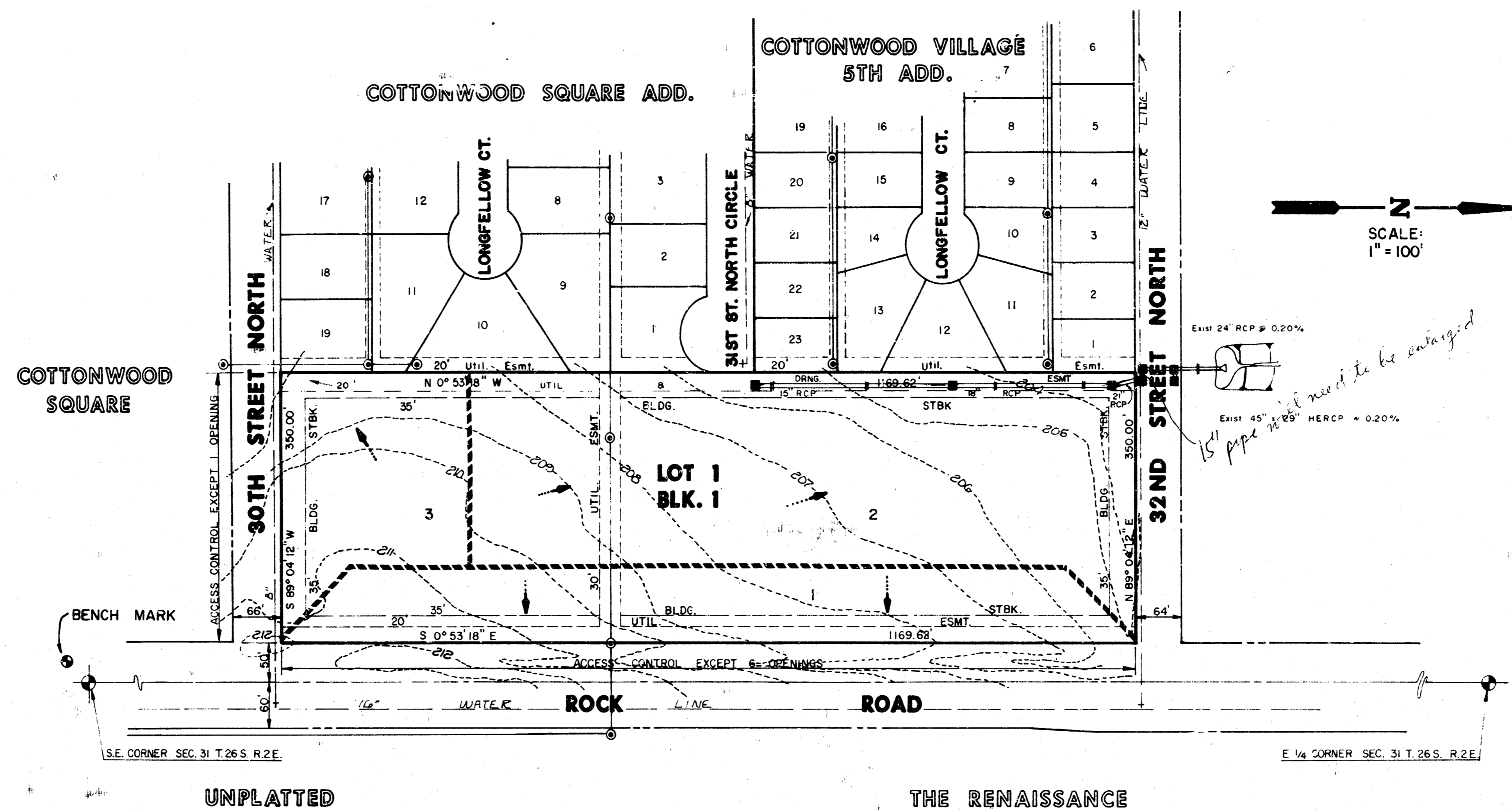


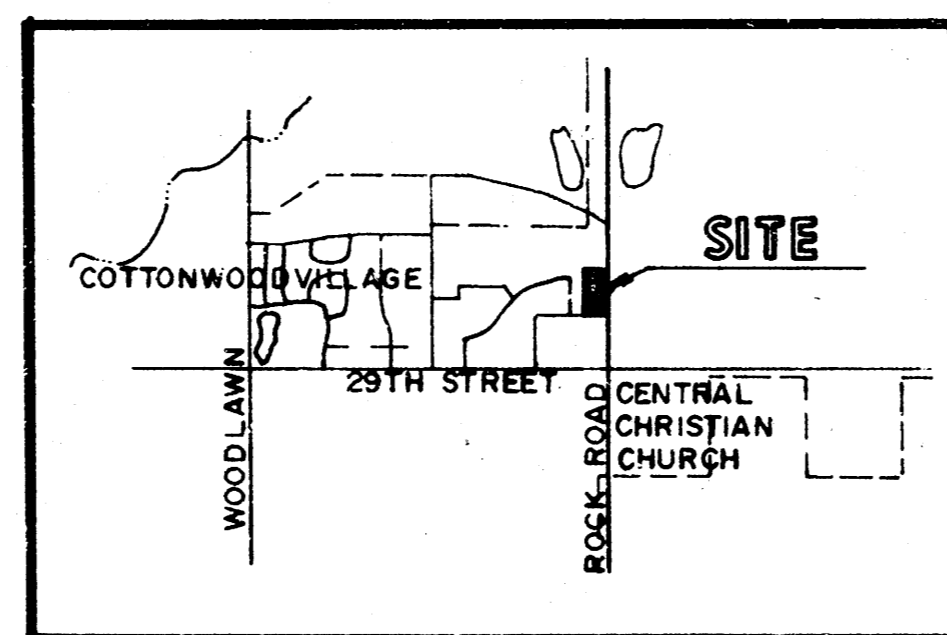
KILLARNEY FIRST ADDITION
(Drainage)

DRAINAGE & UTILITY PLAN KILLARNEY FIRST ADDITION



UNPLATTED

THE RENAISSANCE



LOCATION MAP

NOTES:
 Owner: Killarney Investments Inc.
 8400 Killarney Place
 Topographic Survey: 8/86
 Bench Mark: Southwest corner of Rock Road and 29th Street North Railroad Spike in power pole Elev = 213.703
 Proposed Zoning: L.C.

KILLARNEY FIRST ADDITION	AREA (acres)	AREA ACCUM.	C					PIPE SIZE		PIPE SLOPE	INLETS
			c	c	1/5	1/100	Q _s	Q ₁₀₀			
			(min)	(in/hr)	(in/hr)	(cfs)	(cfs)				
1	2.54		0.76	15	4.56	7.37	8.80	14.23			
2	5.40		0.76	18	4.20	6.84	17.24	28.07	27" RCP 30" RCP	0.30% 0.18%	
3	1.63		0.76	15	4.56	7.37	5.65	9.13			

MK E.C.	KILLARNEY FIRST ADDITION DRAINAGE & UTILITY PLAN	Design by <i>[Signature]</i> Checked by <i>[Signature]</i> Date 12-8-86 Title
	MID-KANSAS ENGINEERING CONSULTANTS PA 2500 NORTH ROCK ROAD BUILDING #800 WICHITA, KANSAS 67226	Sheet 682-6561 of