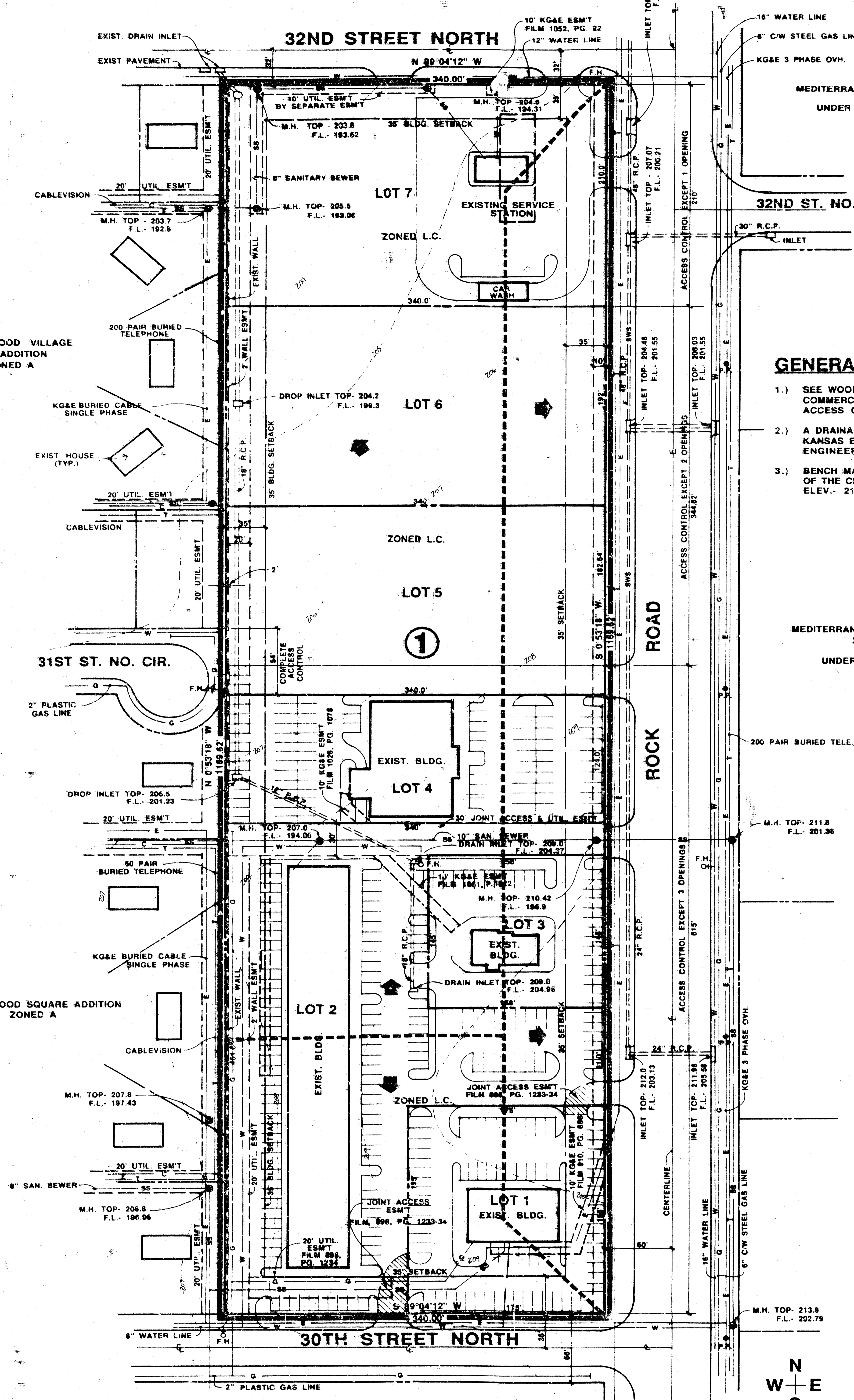


E 1/4 COR.
SEC. 31, T26S, R2E

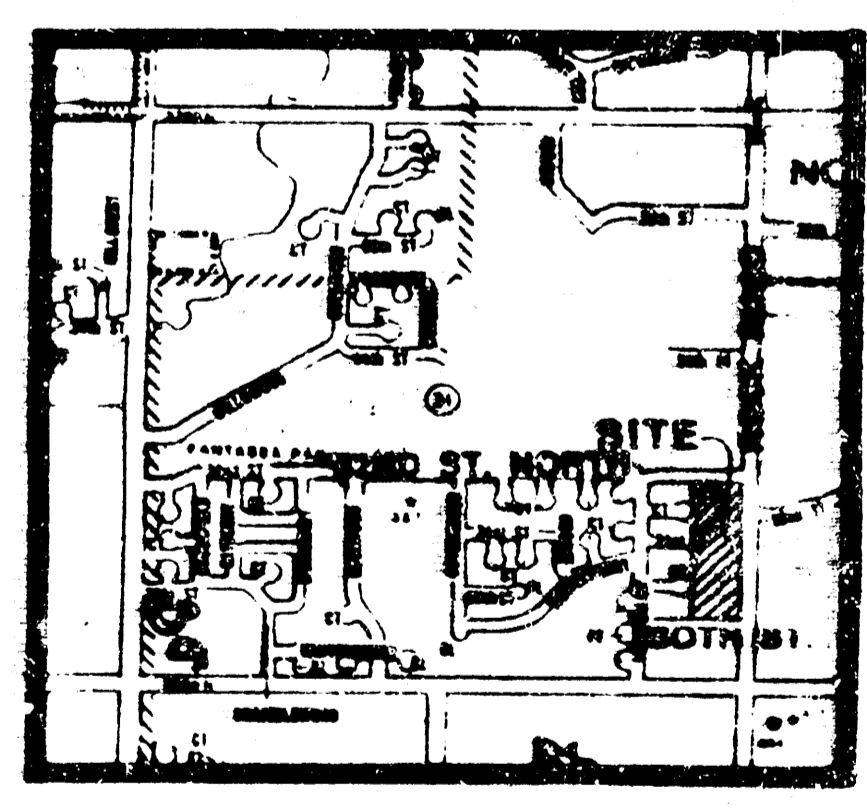
KILLARNEY PLAZA THIRD ADDITION
ZONED L.C.
UNDER C.U.P. D.P.- 158



GENERAL NOTES :

- 1.) SEE WOODLAWN DEVELOPMENT COMPANY PARCEL 11 A COMMERCIAL C.U.P. FOR REQUIREMENTS ON SETBACKS, ACCESS CONTROLS, WALLS, ETC...
- 2.) A DRAINAGE CONCEPT PLAN SHALL BE PREPARED BY M.H. KANSAS ENGINEERING CO. AND SUBMITTED TO THE CITY ENGINEER.
- 3.) BENCH MARK: CITY STANDARD DISC, 44' SOUTH AND 48' OF THE CENTERLINE OF 29TH ST. NORTH & ROCK ROAD. ELEV.- 213.30

MEDITERRANEAN PLAZA COMMERCIAL
2ND ADDITION
ZONED L.C.
UNDER C.U.P. D.P.- 111



SCALE: 1"=50'-0"
CONTOUR INTERVAL: 1'
TOTAL AREA : 9.13 ACRES

DRAINAGE & UTILITY CONCEPT KILLARNEY SECOND ADDITION

OWNER: KILLARNEY INVESTMENTS, INC. 224 E. DOUGLAS, SUITE 333, WICHITA, KANSAS, 67202 PH. (316) 263-5781



PROJECT KILLARNEY SECOND ADDITION

SHEET TITLE PRELIMINARY PLAT

DATE JANUARY 23, 1991
REV.

BILL G. YUNG DESIGN
4912 E. 20TH STREET NORTH WICHITA, KS 67220
316-683-5567 FAX 316-683-9286