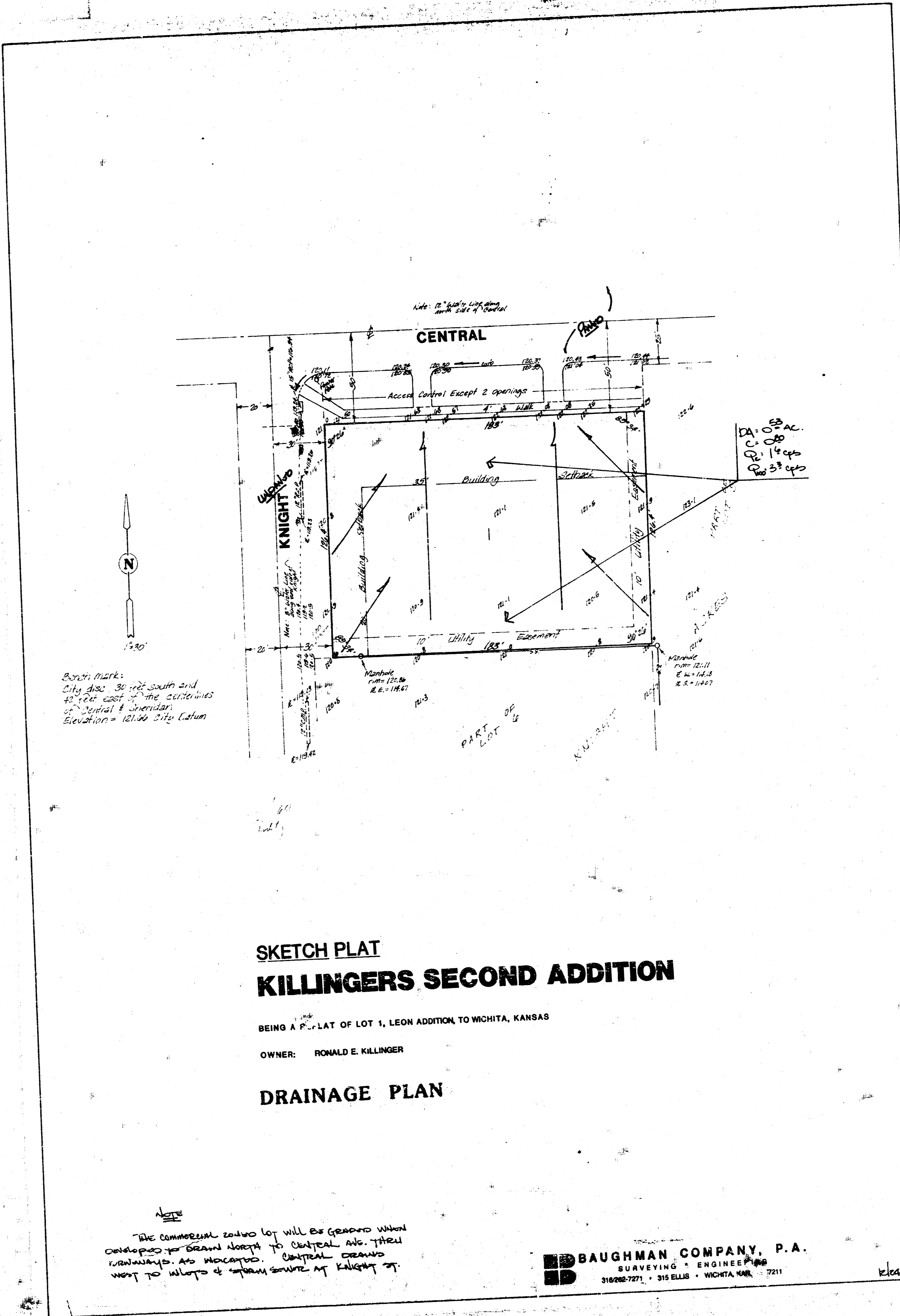


KILLINGERS SECOND ADDITION
(Drainage)



Bench mark:
City 202 30' N of South and
45' E of East of the centerlines
of Central & Sheridan.
Elevation = 121.00 City datum

SKETCH PLAT KILLINGERS SECOND ADDITION

BEING A PART OF LOT 1, LEON ADDITION TO WICHITA, KANSAS

OWNER: RONALD E. KILLINGER

DRAINAGE PLAN

The commercial zoning lot will be granted when
contiguous to Grand Street to Central Ave. thru
KAWANAYAS. AS MOVED. CENTRAL DRAWS
WATER TO WILSON & RETURN SOURCE AT KNIGHT ST.

BAUGHMAN COMPANY, P.A.
SURVEYING & ENGINEERING
31026-7271 • 315 ELLIS • WICHITA, KAN. • 7211

Killinger