

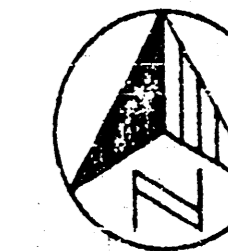
SKETCH PLAT

~~ECK 4TH~~ ADDITION

Killingworth

WICHITA, SEDGWICK COUNTY, KANSAS

CITY OF WICHITA



LEGEND
 ● Property Cor. Set
 ○ Property Cor. Fnd.

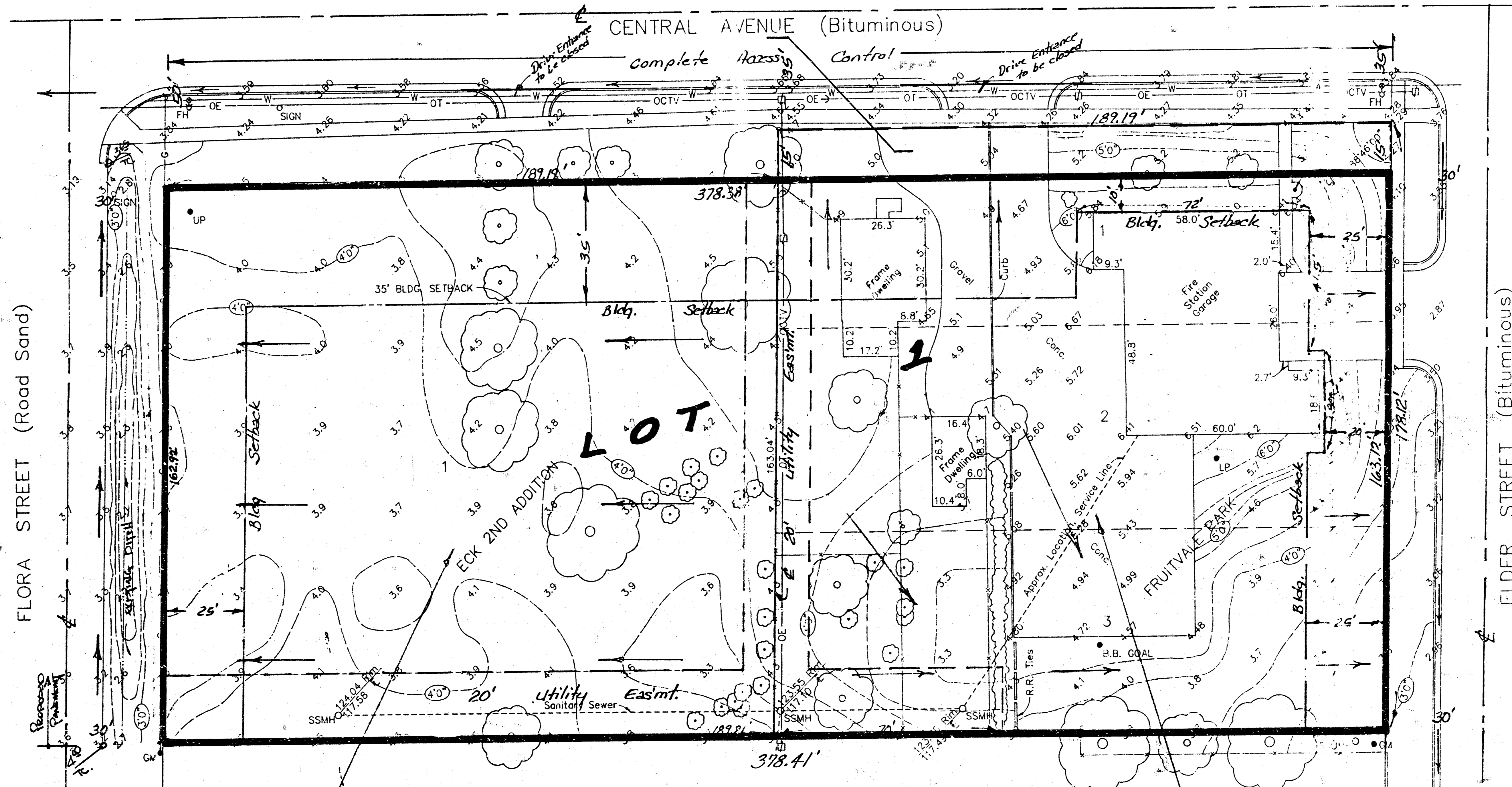
DESCRIPTION:

The East 2/3's of lots 1, 2 and 3; Block No. 11, Fruitvale Park Addition to the City of Wichita, Sedgwick County, Kansas, and The West 1/3's of lots 1, 2 and 3; Block No. 11, Fruitvale Park Addition to the City of Wichita, Sedgwick County, Kansas, and Lot 1, Eck 2nd Addition to the City of Wichita, Sedgwick County, Kansas.

The Undersigned hereby certifies that the Survey information as shown hereon was obtained by field methods and investigations under his direction and supervision, and that all information as shown hereon is correct to the best of his knowledge and belief.



A. J. Oakes, Kansas LS-953



APPROVED DRAINAGE PLAN
 V.R.H.

NOTE - THE PROPOSED LOT WILL BE GRADED IN SUCH A WAY SO THAT DISCHARGE FROM THE LOT TO THE STREETS WILL BE AT THE PRESENT RATE OF EXISTING DEVELOPMENT. THE ADDITIONAL RUNOFF DIFFERENCE BETWEEN THE EXISTING AND THE FUTURE DEVELOPED STATE WILL BE DETAINED ON THE SITE IN SOME MANNER TO BE DETERMINED AT THE TIME OF REDEVELOPMENT OF THE LOT.

Reference BM, City of Wichita B., Disk Hoover/Centers, 34' East, 42' North of E. Int. Elevation - City Datum = 123.29
 BM-1 Step Spk. in Power Pole @ N.E. Cor. of Lot 1, Eck 2nd Addition Elevation - City Datum = 126.30
 BM-2 "M" in Mueller FH located at S.W. Cor. of Central/Elder Elevation - City Datum = 126.32

- GENERAL NOTES:
- All hard surfaced elevations are shown to (2) decimal places.
 - Correction to Sea Level Elevation = City Datum + 1310.69.
 - Utilities shown hereon were determined by field methods and investigations and have not been verified by Utility Owners.
 - Contour interval is 0'-4".
 - Spot elevations are in feet and decimals of a foot and are on City Datum.

Note - The proposed fire station site will be graded to drain to both adjacent streets through the proposed driveways. Elder on the east is presently paved and drains south as indicated. Flora on the west is unpaved and is proposed to be paved and graded north to Central with this project.

SKETCH PLAT 28 DEC 1990
BAUGHMAN COMPANY, P.A.
 SURVEYING & ENGINEERING
 318/282-7271 • 315 ELLIS • WICHITA, KANSAS 67211

DRAINAGE PLAN

GARRY E. SMITH
 ENGINEERS/SURVEYORS
 107 N. SUMMIT - P.O. BOX 596 - ARKANSAS CITY, KS 67205 - (316) 442-4754

DATE: 10/23/90 PROJ.#: 10-906-091 SCALE: 1"=20' SHEET: 1 OF 1 DRAWN: EOT
 ARCHITECTURAL SURVEY
FIRE STATION NUMBER 8
 Wichita, Sedgwick County, Kansas