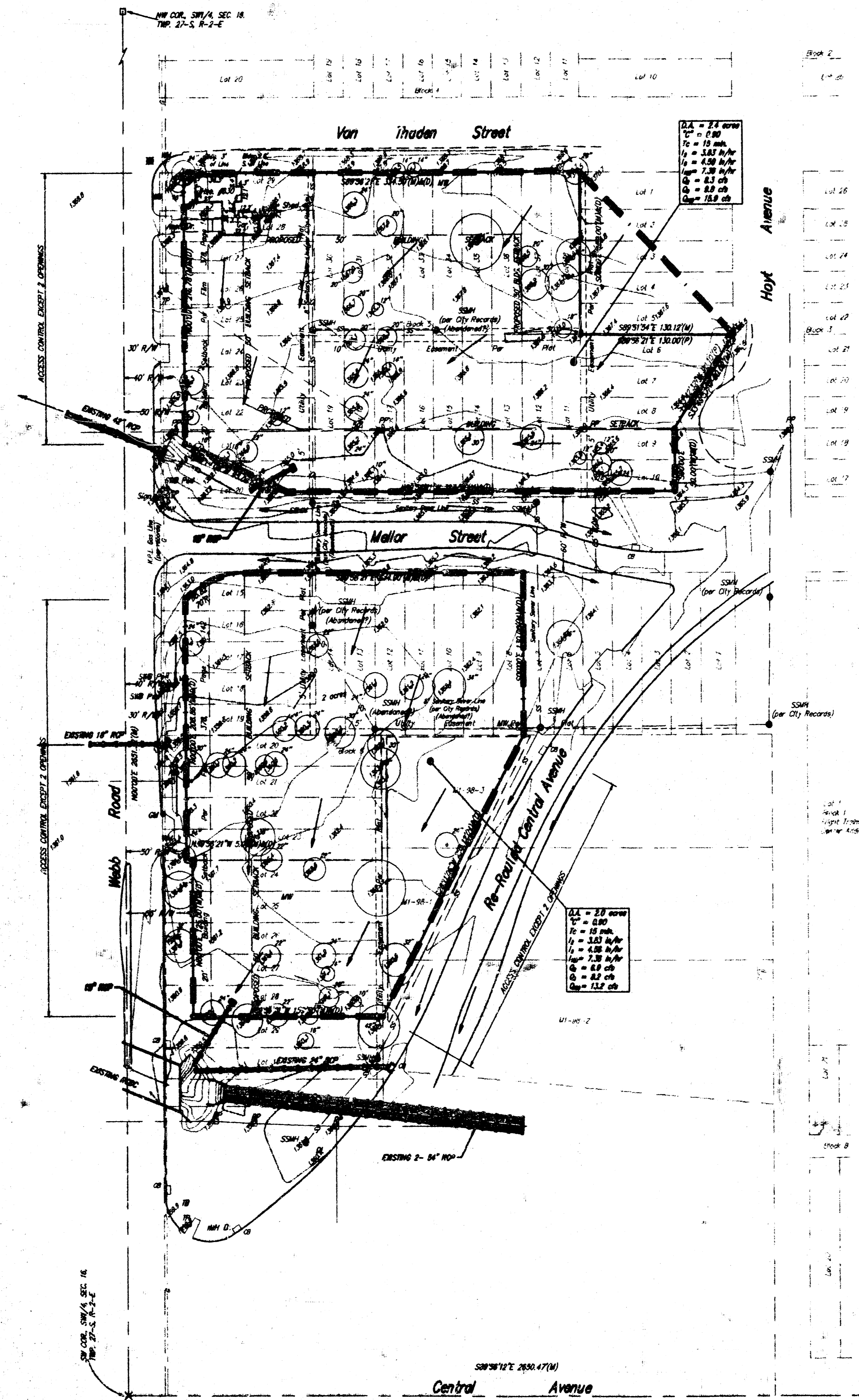


# DRAINAGE PLAN KUHLMAN ADDITION WICHITA, SEDGWICK COUNTY, KANSAS



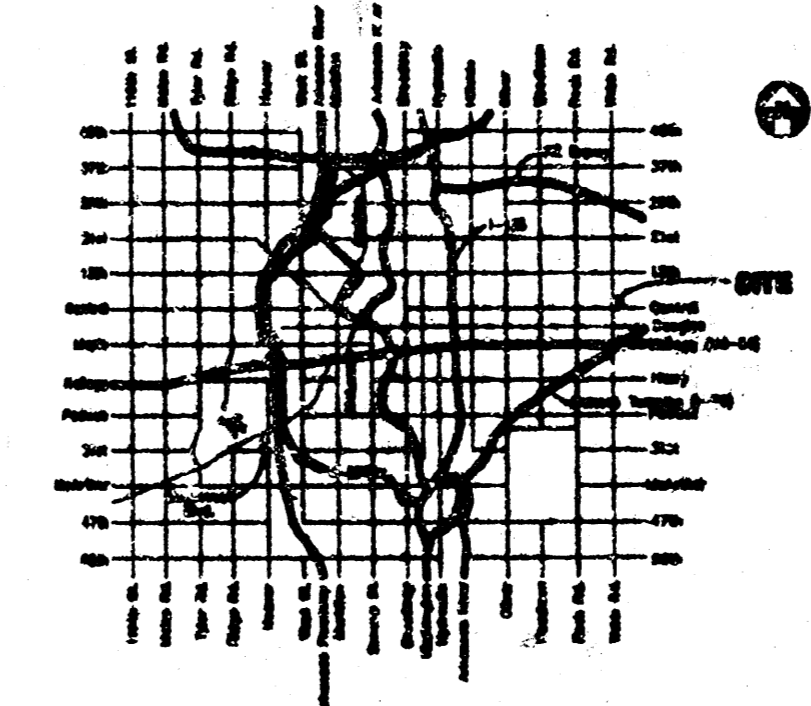
2.4' = 2.4' cover  
 12" = 12" dia.  
 1/2" = 1/2" dia.  
 1/4" = 1/4" dia.  
 1/8" = 1/8" dia.  
 1/16" = 1/16" dia.

2.4' = 2.4' cover  
 12" = 12" dia.  
 1/2" = 1/2" dia.  
 1/4" = 1/4" dia.  
 1/8" = 1/8" dia.  
 1/16" = 1/16" dia.



- CB = Catch Basin
  - CP = Catch Pit/Collector
  - DI = Drop Inlet
  - DL = Detector Loop
  - FL = Fire Hydrant
  - OM = Oil Meter
  - OP = Gas Pipe
  - QA = Gas Anchor
  - MM = Monitoring Well
  - FP = Floor Plate
  - SP = Signal Pole
  - SN = Sign
  - SSM = Sanitary Sewer Manhole
  - SSM-P = Sanitary Sewer Manhole
  - SSM-S = Stormwater Sewer Manhole
  - T = Tree
  - TB = Traffic Box
  - TM = Traffic Manhole
  - TP = Telephone Pole
  - WM = Water Meter
- (M) = MEASURED  
 (P) = PLATED  
 (D) = DECORATED

- ⊙ = 1/4" Baughman Rubber Seal
- = 1/2" Iron Pipe Found
- ⊖ = 1/4" Baughman Rubber Seal On 3" Offset
- ⊠ = Section Corner P.I.K. Nail Found
- ⊡ = Section Corner 1/4" Iron Pipe Found
- X = Section Corner Cross Found



VICINITY MAP